



Easy  
Read

*working together*

# Our plan to support children and young people with SEND and their families



# Easy Read

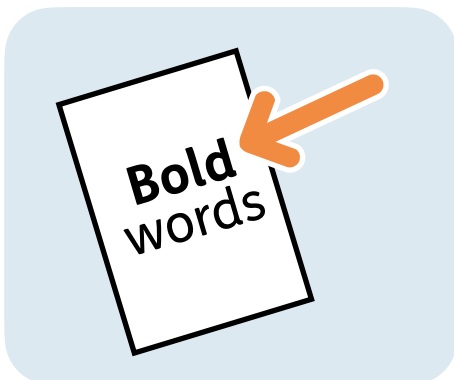


This is an Easy Read version of some information.

It uses easier words and pictures.



Some people may still want help to read it.



Some words are **bold** to show they are important.



We explain bold words if they are hard to understand.

# What is in this booklet

About this booklet .....	4
What we want to happen.....	5
What we plan to do.....	7
Checking the plan is working.....	18
Find out more .....	19

# About this booklet



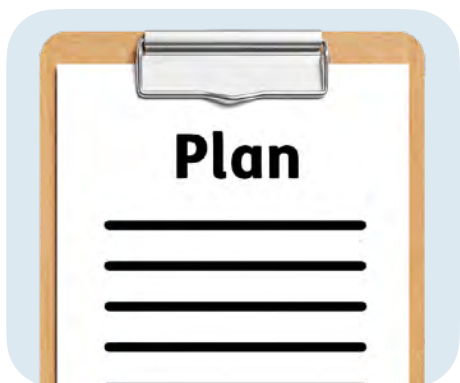
We are Lewisham Council and we have written a plan for how we will help children and young people with **SEND**.



**SEND** stands for **S**pecial **E**ducational **N**eeds and **D**isabilities. Children and young people with SEND need extra support to learn and grow.



We are already doing a lot to support children, young people and their families.



This booklet will tell you about some of the new things in our plan for 2025 to 2030.

# What we want to happen

We want all children and young people with SEND to:



- Have all their needs met.



- Have goals for their lives that they can achieve.



- Feel safe, included and respected.



- Be treated fairly.

We want to:



- Be honest and build good relationships with children, young people and their families.



- Work with children, young people and their families to give them the support they need.



- Keep everyone safe and well in their bodies and minds.



- Support children and young people to become independent, happy adults.

# What we plan to do



**Priorities** are the most important things we want to work on.

We have 5 priorities.

## Priority 1



Priority 1 is to support children and young people with SEND to have good lives.

We will:



- Teach more children and young people to travel on their own.



- Start a group to support children and young people as they become adults.



- Listen to what children and young people want for their own lives.



- Help children and young people to get work experience and jobs.

We will also:



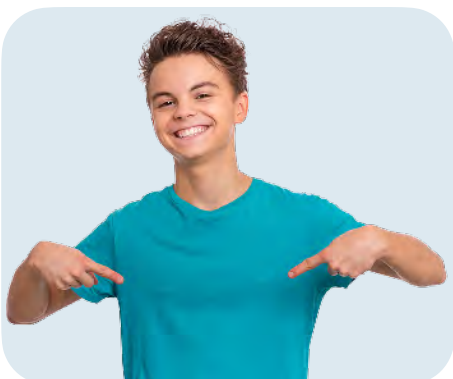
- Keep checking that our services are giving children and young people the support they need.



- Make sure children and young people can learn the subjects they want to at school.



- Make sure children and young people, whatever their **race** or **ethnic background**, get the right support.



**Race** is an identity, like Black, White, or Asian.

**Ethnic background** is the country that you or your family comes from.

## Priority 2



Priority 2 is to listen to what children, young people and families want when we plan and deliver SEND services.

We will:



- Share important information in different ways, so everyone can understand it.



- Include children, young people and their families when we make decisions about SEND services.

We will also:



- Check how many people from different groups use our SEND services to make sure they are fair to everyone.



- Help parents and carers to understand the support they can get.



- Listen to what people say to make our SEND services better.

## Priority 3



Priority 3 is to make sure that everyone working with children and young people has the skills to support them properly.

We will:



- Give staff training and the time to help them find out quickly if children need SEND support.



- Help leaders in schools support other staff, as well as children and young people.

We will also:



- Support schools to help younger children be better at speaking.



- Give SEND training to other staff who work with children and young people, like drivers.

## Priority 4



Priority 4 is to make sure we find all children who need support quickly and give them the support they need on time.



This may mean they need less help later on in life.



Children and young people might need support for SEND or for their **mental health**.

**Mental health** is the way you think, feel and behave. Having good mental health means being able to cope with your emotions.



Children and young people might also need support because they have **autism**.

**Autism** affects things like communication, being with other people, or how you think and feel about things.

We will:



- Have more staff in schools to support children and young people with their mental health as quickly as possible.



- Give more support to children and young people who find out they have autism, and their families.



- Use technology and treatments to help children and young people in all areas of their lives.

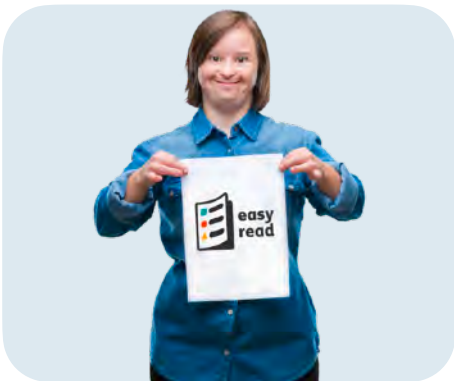


- Make sure more young people aged 14 to 25 with learning disabilities get health checks every year, called **Annual Health Checks.**

We will also:

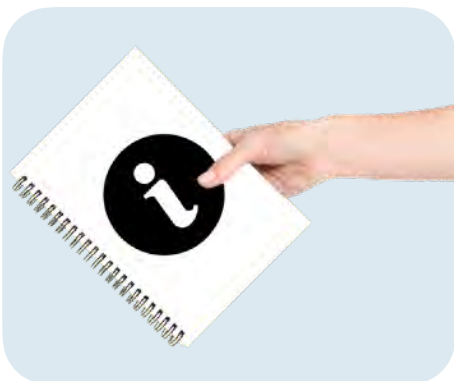


- Work with children, young people and their families to find out what support they need.



- Give information about SEND services in Easy Read.

## Priority 5



Priority 5 is to get better at sharing information and listening to children, young people and families.



We will write a plan for how we talk and listen to families.

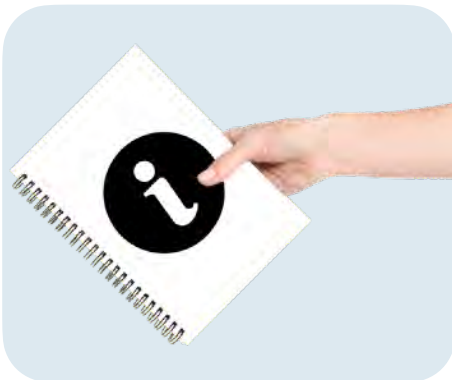
We will also:



- Work to make sure all families are included when we talk about support for their children, including at school.



- Tell people about SEND services in a way that is clear and easy to understand.



- Give families information, advice and support while they wait for SEND services.



- Keep our **Local Offer** up to date and easy to understand.

Our **Local Offer** is a list of services for people with SEND.

# Checking the plan is working



To check our plan is working, we will look at the health and **wellbeing** of children and young people with SEND.



**Wellbeing** means feeling happy and healthy in your body and mind.



We will also look at how well children and young people are learning.

# Find out more



You can see the full plan on our website here:

[lewisham.gov.uk/my-services/children-and-young-people-service/local-offer/send-partnership-strategy](https://lewisham.gov.uk/my-services/children-and-young-people-service/local-offer/send-partnership-strategy)



What do you think about this Easy Read booklet?

Please fill in this survey to tell us what you think: [www.easy-read-online.co.uk/easy-read-feedback-survey](http://www.easy-read-online.co.uk/easy-read-feedback-survey)

This Easy Read booklet was produced by [easy-read-online.co.uk](http://easy-read-online.co.uk)  
The booklet includes images licensed from Shutterstock.