

**LONDON BOROUGH OF LEWISHAM**  
**TOWN AND COUNTRY PLANNING (GENERAL PERMITTED DEVELOPMENT)**  
**(ENGLAND) ORDER 2015 (AS AMENDED)**

**NOTICE OF DIRECTION MADE UNDER ARTICLE 4 (1)**

THE LONDON BOROUGH OF LEWISHAM ("The Council") HEREBY GIVES NOTICE that the Council being the appropriate Local Planning Authority has made a direction pursuant to Article 4 (1) of the Town and Country Planning (General Permitted Development) (England) Order 2015 (as amended) ("The Order").

This notice refers to the direction which affects land (for all Major Centres, District Centres, Local Centres and Strategic Industrial Locations (SIL), Locally Significant Industrial Sites (LSIS) and Mixed-Use Employment Locations (MEL)). The effect of the direction is that development as set in in the schedule to this shall not be carried out on the Land unless planning permission has been granted on an application made under part III of Town and Country Planning Act 1990 ( as amended).

The Direction is made under Article (1) of the General Permitted Development Order and in accordance with Schedule of that Order, and will come into force on the 12 months after the direction is made.

**SCHEDULE**

Development consisting of a change of use of a building and any land within its curtilage. A use falling within Class E (commercial, business and service) of Schedule 2 to the Town and Country Planning (Use Classes) Order 1987 to a use falling within Class C3 (dwelling houses) of Schedule 1 to that Order being development comprised within Class MA of Part 3 of Schedule 2 to the Town and Country Planning (General Permitted Development) (England).

A copy of the Article 4 Direction, map defining the area and associated documents can be seen at Forest Hill Library, Deptford Library, Downham Library and Grove Park Library, during the 6 week representation period. The information is also available on the Council's website at: <https://lewisham.gov.uk/myservices/planning/policy/article-4-direction-for-class-e>

Representations may be made concerning the Article 4 Direction between 30<sup>th</sup> September 2022 and 11<sup>th</sup> November 2022. If you wish to make representations you may do so by:

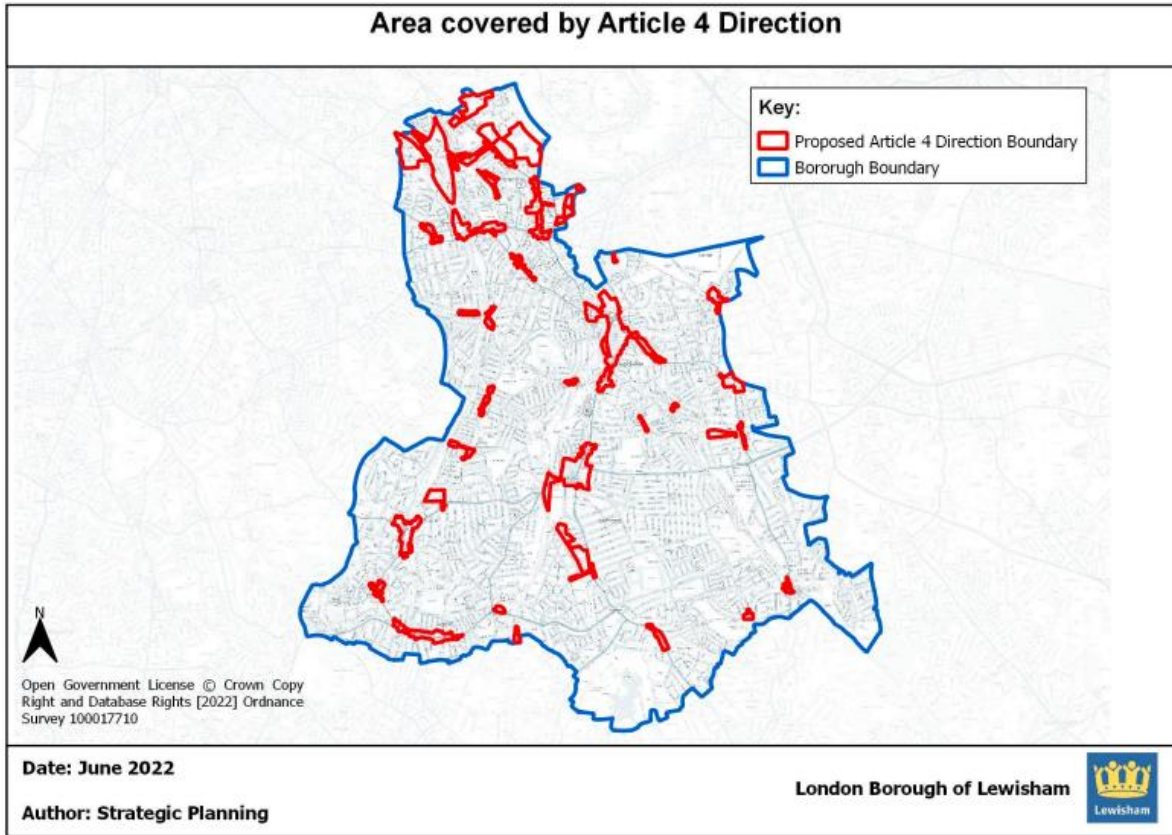
- Emailing [planning.policy@lewisham.gov.uk](mailto:planning.policy@lewisham.gov.uk)
- Posting it to Strategic Planning Team, 2<sup>nd</sup> Floor, Civic Suite, Catford Rd, London SE6 4RX

Dated 30<sup>th</sup> September 2022

The Article 4 (1) Direction if subsequently confirmed by the Council shall come into force on the 30<sup>th</sup> September of 2023 (unless the date specified by the secretary of State) subject to the consideration of representations received during the consultation period.

Lewisham Council Strategic Planning

## SECOND SCHEDULE



**Made** under the COMMON SEAL OF )  
THE MAYOR AND BURGESSES OF THE )  
LONDON BOROUGH OF LEWISHAM )

On

In the presence of:-

**Confirmed** under THE COMMON SEAL OF )  
THE MAYOR AND BURGESSES OF THE )  
LONDON BOROUGH OF LEWISHAM )

ON

In the presence of:-