

## The very best of the borough

Celebrating Lewisham's fantastic independent businesses



- Tips and suggestions to help you save money this winter
- All your festive needs wrapped up
- Give something back in 2023

**WE ARE  
LEWISHAM**



# Could you help a refugee family start their new life in Lewisham?



**We are looking to lease properties in Lewisham that can be rented to refugee families, as part of our refugee resettlement programme.**

**We are looking for entire, self-contained properties where the landlord or property owner does not live in the property.**

To find out more information about leasing your property to support our refugee resettlement programme, go to [lewisham.gov.uk/HomesForRefugees](http://lewisham.gov.uk/HomesForRefugees)



Welcome

## Message from the Mayor



**Damien Egan,  
Mayor of  
Lewisham**

Welcome to your winter issue of Lewisham Life. In this issue we're sharing information about how we're supporting people through the cost of living crisis; from our Warm Welcomes, which provide warm and safe spaces for people to spend time for free; to financial advice; hardship grants and access to essentials like food.

We know that many people will be finding this winter particularly hard, and I'd urge anyone who is struggling or worried about how they

will pay the bills to reach out for help. On pages 11–13 we've included simple tips on how to save money on household bills, and details of support available. You can also check our website to find out about local support or call us on 020 8314 6000.

As 2022 draws to a close, so too does our year as the London Borough of Culture. And what a year it's been! I hope you've had the opportunity to join in some of the hundreds of events that have taken place across Lewisham – and there's still more to come! Our big finale will be LIT!, a special festive event at Beckenham Place Park, which features free illuminations to help us all get in the festive spirit. I hope you can join us!

Finally – a quick plug for my winter appeal. I know this is a difficult time, but if you are a business looking to support a local charity, or are considering making a donation to an organisation that's making a big difference in our community, I'd be grateful if you would consider The Young Lewisham Project, who are my Mayor's Charity of the Year and do incredible work to support local young people. Find out more on page five or visit [younglewisham.org/mayorwinterappeal](http://younglewisham.org/mayorwinterappeal).



A handwritten signature in black ink that reads "Damien Egan".

Damien Egan, Mayor of Lewisham



## In this issue

Read about the financial and community support available throughout the borough this winter.

Stay local and use our Discover Lewisham guide to the festive season, plus try our cheap vegan recipe over the holidays and try a new local walk.

Our current Young Mayor reflects on a busy term and signs off, and we learn about volunteering opportunities at Lewisham Local.

Finally there is some information to help ensure you stay protected by getting your COVID-19 and flu boosters.



25

## Contents

- 5 News
- 11 Cost of Living
- 14 Get a winter booster
- 15 Holiday season
- 21 Young Mayor of Lewisham
- 22 Mayor's Business Awards
- 24 Get outside
- 25 London Borough of Culture
- 30 Volunteer
- 31 Your Council

**Produced by:** The Communications Team, Lewisham Council  
**Editorial:** 020 8314 7027. **Email:** lewishamlife@lewisham.gov.uk  
 Photographs: Suzi Corker, istock, Ciaran O’Fathaigh, Tionne Reid-Minto, SevenStories, Jeff Teader.  
**Issue 139 winter 2022.** Printed by Sterling Solutions. Lewisham Council does not accept responsibility for goods or services offered by advertisers. Please use your recycling bin when you dispose of this magazine.

Sign up to the Lewisham Life newsletter. Keep up to date with news and information about Council services every week. Go to [lewisham.gov.uk/signup](http://lewisham.gov.uk/signup)



**lewisham.gov.uk**  
 the home for all your local information

- » Get information about your neighbourhood, what’s on and how to get involved
- » Find activities for you and all the family
- » Live in a controlled parking zone? Apply for your permit online
- » Get local news and information direct to your inbox – subscribe at [lewisham.gov.uk/signup](http://lewisham.gov.uk/signup)

**If you cannot contact us online, you can call 020 8314 6000**

### Useful contacts:

- Lewisham Homes**  
0800 028 2028  
[lewishamhomes.org.uk](http://lewishamhomes.org.uk)
- Local health service**  
[nhs.uk](http://nhs.uk) or NHS 111
- Police (non-emergency) 101**
- Thames Water**  
0845 920 0800 (customer services)  
0800 714614 (24-hour leakline)
- Gas emergencies 0800 111 999**

# Support the Winter Appeal

Buy bikes and boxing gloves for kids in Lewisham this Christmas. The Mayor of Lewisham’s Winter Appeal is raising money to support the Young Lewisham Project, who provide a safe learning environment for young people who struggle in mainstream education.

For this year’s appeal, if they are able and want to, residents can donate towards providing festive gifts for the young people to use at the project. From paying £15 for a new pair of boxing gloves for the onsite gym, to £100 for providing a young person with their own refurbished bike along with training on the skills to fix it and ride safely, or as little as £5 to



**YOUNG LEWISHAM PROJECT**

The Mayor of Lewisham, Damien Egan and Brenda Dacres, Deputy Mayor, visit the Young Lewisham Project

provide a child with a free festive lunch. Donate using the QR code, or visit [younglewisham.org.uk](http://younglewisham.org.uk)

[org.uk/mayorwinterappeal](http://org.uk/mayorwinterappeal) and [@younglewishamproject](https://twitter.com/younglewishamproject) for more information.

## New 100% social housing development



A CGI of the proposed 100% social housing development on New Cross Road

A planned housing development in New Cross is set to deliver twice as many social homes as previously planned – making it 100% social housing – after the development was acquired by the Council. Planning permission had previously been granted for 35 new homes to be built on the land at 52-54 New Cross Road. Following the Council’s acquisition of the land, all 35 new homes will now be social homes for families on the housing waiting list, helping to tackle the housing crisis.

As well as delivering much-

needed social housing, the development will include new green space, wheelchair accessible homes and storage for 66 bikes, ensuring that sustainability, accessibility and tackling the Climate Emergency are at the heart of our Building for Lewisham programme.

Construction is set to begin later this year and the project is expected to be completed in 2024.

Find out more about our work to deliver new social housing in Lewisham at [lewisham.gov.uk/BuildingForLewisham](http://lewisham.gov.uk/BuildingForLewisham).

# Celebrity chef takes over Torridon School!

Pupils and staff at Torridon Primary School were treated to a surprise celebrity visitor, as Michelin-starred chef Tom Kerridge dropped in to take part in a fun food workshop as part of his 'Full Time Meals' campaign.

As part of his role for the day, Kerridge put his cookery skills to the test in a cook off against the school's popular chef, Raheem Morgan, in front of a lively and excitable crowd of Year 5 and 6 pupils. He then joined Raheem in the school kitchen to cook lunch for the entire school.

You can read more about the Full Time Meals campaign by



following @FullTimeMeals on Facebook and Instagram. Raheem has very kindly

created a special festive recipe for us for this issue! Find it on page 19.

## CTK Emmanuel wins national eco comp

Lewisham sixth form college Christ the King Emmanuel was one of four schools to win a UK-wide competition run by retail giant IKEA.

The Let's Go Zero competition challenged young people across the UK to develop ideas to help tackle climate change, after it was revealed by IKEA that eight in 10 (83%) young people

aged 5-16 want to make changes at school to help combat the issue and a further 65% said that they feel their school has already implemented some initiatives, but not enough.

The "enviro-hub" will make learning about the environment more accessible for students at the sixth form, and other young children in the local area.



## Students celebrated in New Cross Fire Bursary awards

In October, we celebrated thirteen local students who received bursaries from the Council – in memory of the victims of the New Cross fire.

Now in its fifteenth year, the New Cross Fire Bursary Awards were established as a memorial to the fourteen young people who lost their lives because of a house fire at 436 New Cross Road in 1981.

The in-person ceremony took

place on Thursday 13 October for the first time since 2019 and celebrated bursary recipients from 2020, 2021 and 2022. Each of the 13 students received £4,500 towards the cost of their undergraduate courses.

The bursaries enable residents to study at Goldsmiths, University of London, in the face of high tuition fees and the rising cost of student living.

Since the awards were

established in 2007, we've given more than £325,000 in bursaries, supporting more than 40 students. Goldsmiths also waives the university tuition fees for many of these students, meaning they graduate without the burden of debt.

To apply for the New Cross Fire Bursaries 2022-23, please visit the Goldsmiths website [gold.ac.uk/fees-funding/scholarships/new-cross-fire-bursaries](https://gold.ac.uk/fees-funding/scholarships/new-cross-fire-bursaries)

## Nominations open for the Mayor's Community Awards

We are asking residents to nominate unsung local heroes for the sixth annual Mayor's Community Awards. These awards are an annual opportunity to celebrate inspirational local people,

businesses and groups for their amazing contributions to the community. This might include helping a neighbour in need; giving up free time to volunteer; sponsoring a local sports team; an incredible act

of selflessness; donating food and the list goes on.

Nominations open on Monday 28 November and are via the Council website. Please visit [lewisham.gov.uk/mayorsawards](https://lewisham.gov.uk/mayorsawards)



## Independent Travellers

There were proud smiles and speeches at the town hall as over 30 young people from Lewisham schools received their Independent Travel Training certificates from Mayor Damien Egan.

The Independent Travel Training team work alongside young people with special

educational needs or disabilities to build their confidence and knowledge of the public transport system, helping them to navigate their own way around London's buses, trains and roads.

It was wonderful to bring all the learners and their families together to celebrate their independence!



## Cycleway 4 reaches Evelyn and Deptford

The latest section of Cycleway 4 has now opened in Evelyn and Deptford, with an additional 1.4km of two-way protected cycle track, making it safer and easier for residents to cycle around the borough and across London. Councillor Louise Krupski, Cabinet Member for Environment and Climate Action, was joined by London's Walking and Cycling Commissioner, Will Norman, to open the new cycle

route, delivered by Transport for London in partnership with the Council.

As part of our work to create a Greener Lewisham, we are continuing to put new measures in place to support active travel and enable residents to walk and cycle more. If you want to start cycling but don't own a bike, check out our cycle loan scheme – go to [lewisham.gov.uk/TryBeforeYouBike](http://lewisham.gov.uk/TryBeforeYouBike)

## Award win for local Play Street

Congratulations to the residents of Ashwater Road in Grove Park, which has been named London Play Street of the Year by London Play. It's one of 35 Play Streets we support across the borough, enabling children to play safely and helping bring communities together.

The expansion of Play Streets in Lewisham is an important part of our new five year Play Strategy, and you can find out more by visiting [lewisham.gov.uk/playstrategy](http://lewisham.gov.uk/playstrategy).

You can apply for a Play Street on your road at [lewisham.gov.uk/PlayStreet](http://lewisham.gov.uk/PlayStreet)



## Electric cargo bikes for local businesses

Lewisham businesses are now able to make more deliveries by bike thanks to a new electric cargo bike loan scheme. We have worked with the London Cycling Campaign to provide Lewisham business with electric cargo bikes on a free, three month loan. With fewer deliveries being made by car or

van, the scheme will help improve air quality in the borough and support our mission to make Lewisham net-zero by 2030.

One of the first businesses to benefit from the scheme is Mont58 Coffee, who are using the bike for their larger coffee deliveries, helping them to save money and tackle the Climate Emergency.

## Climate Action Bond launch

Residents will have the chance to invest in local projects that tackle the Climate Emergency, through a new Climate Action Bond. They will be able to invest from potentially as little as £5, providing a secure, low-cost investment that improves the local community, with interest paid out on the original investment.

We are one of the first councils in the country to launch this sort of innovative community investment model, which aims to generate £1m for projects such as retrofitting local buildings and installing more cycle hangars and electric vehicle charging points.

Details about the scheme will be available when it launches next year.

# PIANOS

Robert MORLEY Co Ltd

020 • 8318 • 5838

New Grand and Upright Pianos by Bechstein, W.Hoffmann, Grottrian-Steinweg, Ritmuller and Elysian.  
Also good secondhand pianos by Bechstein, Yamaha, Kawai, Monington & Weston and many other excellent makes.



Harpichords, Spinets and Clavichords

Sales - Home Rental  
Factory Restoration - Tuning

Established 1881

34 ENGATE St. LONDON SE13 7HA

www.morleypianos.com

# Grants

FOR CENTRAL HEATING, BOILER & INSULATIONS

**Grant** for 1st time central Heating if you are using old electric heaters (Sub. to gas availability)

**Grant** to change your over 15 year old non condensing boiler along with loft/wall insulations

Grants are under Government's ECO4 Grant Scheme

**Criteria**

- Anyone in household in receipt of any benefits like tax credit, UC, pension credit or income support etc.
- OR net income (after tax and NI) less than £31K




**Grants Grants Grants**

**SAVE MONEY - SAVE PLANET**

Greenland Energy Services Ltd,  
26a Duncombe Hill, SE23 1QB  
info@greenlandenergy.co.uk  
0203 686 3512 | 0749 737 6031



# WINTER FESTIVAL



Come and enjoy the festive season with **MUSIC PERFORMANCES, NEW FOOD STALLS, a FREE SANTA'S GROTTTO** and all of our regular **LOCAL TRADERS.**

# LEWISHAM MARKET

LEWISHAM.GOV.UK/  
WINTERFESTIVAL

## Cost of living

# Winter advice

Use these tips and suggestions to help you save money this winter and find out where you can go to get more support



### Energy saving tips

There are things you can do to reduce the amount of energy you use in your home. We have captured some of these below:

#### Draught-proof windows and doors



Check for draughts around windows, doors, floors and skirting boards. Blocking these cracks can save about £125 per year. There are professional draught-proofing measures but a cheaper option is DIY.

#### Fit a water-saving shower head



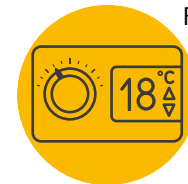
Keeping your shower time to four minutes could save a household £95 a year. A water saving shower head can save £50 a year. Find out more about water saving measures from Thames Water.

#### Don't leave electrical appliances on standby



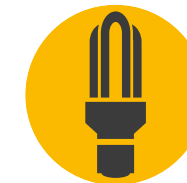
Most electrical appliances can now be turned off without upsetting the programming. Some satellite and digital TV recorders may need to be left plugged in.

#### Turn your thermostat down



For each degree you cut the thermostat, expect to cut your bills by 4%, or about £100 per year on average for a typical home. The World Health Organisation says that 18 degrees is enough for healthy adults and 20 degrees for those who are old, young or unwell.

#### Use energy saving light bulbs



They use 80% less energy than conventional light bulbs and will save money over their life time. Don't forget to turn off your lights when not in use.

#### Savings in the kitchen



By only boiling the water that you are going to use, you can save £13 per year. Fitting an aerator to your kitchen tap can save water and up to £30 per year. Not every household has a dishwasher but by only running it when it is full can save approximately £17 per year.

#### Use a cooler wash cycle when washing your clothes



A 30 degree wash requires a third of the energy needed for a regular wash. Spend less time in the shower and swap baths for a shower.

We're all feeling the impact of the cost of living crisis at the moment. The Council and organisations across Lewisham are offering help and advice including:

- Making sure you're claiming all the benefits and support you're entitled to
  - Training and employment support
  - Access to food and other essentials
  - Warm spaces and free things to do
  - Debt advice
- Extra support is available for people who are over 65, on a low income or with a long term health condition or disability to keep warm and healthy this winter. For more information visit [lewisham.gov.uk/support](http://lewisham.gov.uk/support)

Please share this information with friends or family who may be eligible.

## How much could you save?

£ saving per year

Don't leave your appliances in standby mode	£65
Draught-proof gaps	£125
Turn off lights	£25
Wash at 30 degrees and reduce one wash per week	£34
Avoid using the tumbler dryer	£70
Take four minute showers	£95
Swap one bath a week for a four minute shower	£20
Don't overfill the kettle and fit a tap aerator	£43
Reduce your dishwasher use by one run per week	£17
Insulate your hot water cylinder	£70

Source: Energy Saving trust

# WARM WELCOME

We are working with local partners to identify local spaces that can provide warm spaces free of charge for residents. We want to extend a warm welcome to anyone who needs a warm, inviting space through the Cost of Living Crisis. This includes our libraries – for opening times and more info about our libraries go to [lewisham.gov.uk/libraries](http://lewisham.gov.uk/libraries)

Our wonderful community groups are coming together to offer spaces where people can pop in. Our partners at Lewisham Local are working with us to coordinate these. All spaces are currently different, some may be providing hot drinks, others may be providing hot food, others may be providing social activities and

additional support. Please check each listing for an overview of opening times and services provided. [lewishamlocal.com/lewisham-warm-spaces](http://lewishamlocal.com/lewisham-warm-spaces) Visit [lewisham.gov.uk/support](http://lewisham.gov.uk/support) or call our helpline 020 8314 6000 if you need further support.



## Financial support

### Warm Home Discount Scheme

You could get £150 off your electricity bill for winter 2022–23. Find out more at [gov.uk/the-warm-home-discount-scheme](http://gov.uk/the-warm-home-discount-scheme)

### Winter fuel payment

If you were born on or before September 25, 1956, you could get between £250 and £600 to help with heating bills. You will get this if you receive the state pension or another social security benefit.

### Cold weather payments

If you are receiving certain benefits, you may qualify to get a payment when the average temperature in your area gets to zero degrees or lower for seven consecutive days. You'll get £25 for each day of very cold weather. This scheme started on 1 November 2022.

### Grants from energy suppliers

Some energy suppliers are offering grants to their customers to help them pay off their bills. Contact your supplier if you are struggling to pay – they may be able to help.

### Useful websites

Visit [turn2us.org.uk](http://turn2us.org.uk) to find out about charitable grants that you might be eligible for.

Are you claiming everything you're entitled to? Check the benefits calculators on [gov.uk/benefits-calculators](http://gov.uk/benefits-calculators)

For more local financial support visit [worryingaboutmoney.co.uk/lewisham](http://worryingaboutmoney.co.uk/lewisham)

## Help in your local area

### Foodbanks

If you are struggling to buy food you can find a list of community projects offering free or low-cost food on [lewisham.gov.uk/foodsupportservices](http://lewisham.gov.uk/foodsupportservices) or call 0330 058 3464 for more information. You may need a referral from a support service, your children's school or a charity, but some offer a drop-in service.

### Coping with debt

Contact Advice Lewisham for enquiries about benefits, housing, debt, employment, immigration, family and consumer issues. They can be reached on 0800 231 5453 or [advicelewisham.org.uk](http://advicelewisham.org.uk).

You can also speak to the independent organisation MoneyHelper for free, confidential advice. Call 0800 138 7777 or visit [moneyhelper.org.uk](http://moneyhelper.org.uk)

### Mental health and wellbeing advice

Community Connections Lewisham provide options for help and can link you up to support services. Call 0330 058 3464 (9.30am–4pm Monday to Friday), or visit [communityconnectionslewisham.org](http://communityconnectionslewisham.org)

### Help with employment and training

See if you're entitled to reduced fees on Lewisham's Adult Education courses by visiting [lewisham.gov.uk/adultlearning](http://lewisham.gov.uk/adultlearning).

Lewisham Works is a free service to support unemployed residents into good jobs. Speak to them by emailing [JobsAndSkills@lewisham.gov.uk](mailto:JobsAndSkills@lewisham.gov.uk) and find out more at [lewisham.gov.uk/lewishamworks](http://lewisham.gov.uk/lewishamworks)

## Check your contracts!

If you've not renewed your contracts for things like broadband, mobile phones or insurance for over a year, you may be able to save a significant amount! Speak to your provider.



**Remember to get the COVID-19 booster and flu vaccine. Protection provided by COVID-19 vaccines decreases over time and flu viruses can change every year.**



**If you are eligible, you can get the COVID-19 autumn booster by calling 119 or go online and search for 'NHS booking service'**

**F**lu and COVID-19 can both cause serious illness and spread more easily when mixing indoors during winter. Flu spreads from person to person – even if you're not showing symptoms. The vaccine is the best protection for you and those around you.

Getting both vaccines is important because more people are likely to get flu this winter and you're more likely to be seriously ill if you get flu and COVID-19 at the same time.

It's safe to have both vaccines at the same time, but you need to book them separately. If you're eligible for either vaccine, you do not need to wait to be contacted to get vaccinated.

**COVID-19**

The COVID-19 vaccine available to the following groups:

- Everyone aged 5 and over can get a 1st and 2nd dose of the COVID-19 vaccine.
- People aged 16 and over, and some children aged 12 to 15, can also get a booster dose.
- People aged five and over who had a severely

weakened immune system when they had their 1st or 2nd dose will be offered an additional primary dose (3rd dose) before any booster doses.

- People aged 50 or over, people aged 16 to 49 who are carers, those at higher risk or who are pregnant, and frontline health and social care workers, will be offered a seasonal booster (autumn booster).

**Flu**

You can have the NHS flu vaccine at your GP surgery, a pharmacy (if you're aged 18 or over), and some maternity services if you're pregnant.

Children aged six months and older in at-risk groups, children aged two to 10 and secondary school children in Years 7, 8 and 9 will be offered the vaccine.

The flu vaccine is given free on the NHS to adults who are eligible.

You can check if you are eligible at [nhs.uk/wintervaccinations](https://www.nhs.uk/wintervaccinations)

Get a winter **booster**



**Whether you're shopping for gifts or food, planning office drinks or treating yourself to a Christmas hairdo, our borough has your festive needs all wrapped up**

# DISCOVER our fantastic indie businesses



**L**ewisham's independent businesses are the beating heart of our communities. Supporting them is even more important this winter as they, like many of us, feel the impact of the cost of living crisis. Remember,

when you give local businesses your custom, you're also helping to boost our local economy which means more jobs for residents – it's an all-round win-win. So please support local this Christmas.



**Discover Lewisham's festive family fun**

Want to catch a Christmas classic on the big screen? Perhaps you fancy a festive trip to the theatre? How about an afternoon of crafting or excitement at the funfair? Lewisham has something to keep the whole family entertained this holiday season.

**The Albany (Deptford)**

Douglas Way SE8 4AG  
[thealbany.org.uk](https://www.thealbany.org.uk)

**Beckenham Place Park (Beckenham)**

Beckenham Hill Road BR3 1SY  
[beckenhamplacepark.co.uk](https://www.beckenhamplacepark.co.uk)

**Brockley Jack Theatre (Crofton Park)**

410 Brockley Road SE4 2DH  
[brockleyjack.co.uk](https://www.brockleyjack.co.uk)

**Catford Mews (Catford)**

32 Winslade Way SE6 4JU  
[catford-mews.co.uk](https://www.catford-mews.co.uk)

**Horniman Museum and Gardens (Forest Hill)**

100 London Road SE23 3PQ  
[horniman.ac.uk](https://www.horniman.ac.uk)



The Snowman, Catford Mews



Elmer and Friends, The Horniman



The Tinfoil Astronaut, The Albany







### Discover Lewisham's festive drinking spots

Heading out for drinks? Raise a glass to Lewisham's independent pubs and bars. There are lots of fantastic places to grab a pint or sip a mulled wine.

**Drink at Bob's (Hither Green)**  
214 Hither Green Lane SE13 6RT  
drinkat.co.uk

**Elements Bar (Lee)**  
207 Lee High Road SE13 5PQ  
elementsbar.co.uk

**Fox and Firkin (Ladywell)**  
316 Lewisham High Street SE13 6JZ  
foxfirkin.com

**The Dog and Bell (Deptford)**  
116 Prince Street SE8 3JD  
facebook.com/TheDogandBell

**Ignition Brewery (Sydenham)**  
The Sydenham Centre, 44A Sydenham Road SE26 5QX  
ignition.beer



Ignition Brewery



### Discover Lewisham's gifts that keep on giving

There's always one person that's tricky to buy for. If you're stuck for gift ideas, a thoughtful contribution to a local charity on someone's behalf can make for a perfect prezzie.

**999 Club**  
21 Deptford Broadway SE8 4PA  
999club.org

**Voluntary Services Lewisham**  
29-39 Clarendon Rise  
SE13 5ES  
vslonline.org.uk

**Toy Library**  
Unit 46, Lewisham Centre  
SE13 7EP  
lewishamtoylibrary.org.uk

**Young Lewisham Project**  
124 Kilmore Road SE23 2SR  
younglewisham.org.uk

**Lewisham Foodbank**  
Hope Centre,  
118 Malham Road SE23 1AN  
lewisham.foodbank.org.uk



Toy Library

### Discover Lewisham's festive food shopping

Whether you're after brandy butter, brussels sprouts, bread sauce, or show-stopping centrepieces, Lewisham's fantastic independent shops have your festive foodie needs covered.

**Marvellous Greens & Beans (Honor Oak)**  
72 Brockley Rise SE23 1LN  
marvellousgreensandbeans.com

**Antonio Delicatessen (Lewisham)**  
23 Lewis Grove SE13 6BG  
antoniodelicatessen.co.uk

**Good Food (Sydenham)**  
26B Sydenham Road SE26 5QW  
goodfood.org.uk

**Lewisham Open Market**  
Lewisham High Street SE13 6AT  
lewisham.gov.uk/markets

**Cat Food Cakes (Brockley)**  
catfoodcakes.com



Cat Food Cakes




Good Food

### Discover Lewisham's Christmas menus

Whether you're planning a get-together with friends or want a stress-free family meal on the big day, head to Lewisham's restaurants. From indulgent plates to light bites or buffet-style extravaganzas, there's something for every taste.

**Everest Inn (Blackheath)**  
41 Montpelier Vale, Blackheath SE3 0TJ  
everestinn.co.uk/blackheath

**Chicha (Lewisham)**  
22 Loampit Hill, Lewisham SE13 7SW  
chichalewisham.com

**The Sylvan Post (Forest Hill)**  
24-28 Dartmouth Road, Forest Hill SE23 3XZ  
sylvanpost.co.uk

**Buster Mantis (Deptford)**  
3-4 Resolution Way, Deptford, SE8 4NT  
bustermantis.com

**Parlez (Brockley)**  
16 Coulgate Street, Brockley, SE4 2RW  
parlezlocal.com



Chicha

### Discover Lewisham's Christmas party venues

Have you been tasked with planning your work Christmas do? You'll be pleased to know, our borough is packed to the rafters with fantastic options for a great night out with colleagues, whether you fancy a sit down meal, a boogie or want to go bowling.

**The Fellowship Inn (Bellingham)**  
Randlesdown Road SE6 3BT  
fellowshipinn.co.uk

**The Greyhound (Sydenham)**  
313-315 Kirkdale SE26 4QB  
thegreyhoundsydenham.co.uk

**Lewisham Lanes**  
11-29 Belmont Hill SE13 5AU  
lewishamlanes.co.uk

**Job Centre (Deptford)**  
120-122 Deptford High Street  
SE8 4NP  
jobcentredeptford.com

**Perry Hill Pub (Catford)**  
78-80 Perry Hill SE6 4EY  
perryhillpub.co.uk



The Fellowship Inn



The Greyhound

### Discover Lewisham's salons this Christmas

Want to look the part? Whether treating yourself to a trim, a manicure, or full-on pampering session, pay a visit one of our independent hair and beauty salons to feel like a million dollars.

**Barbaros Hair Salon (Honor Oak)**  
58 Honor Oak Park SE23 1DY  
barbaros.co.uk

**Inspire Beauty (Catford)**  
34-35 Winslade Way SE6 4JU  
inspirebeautyuk.com

**George's Barber (Hither Green)**  
228 Hither Green Lane SE13 6RT

**Stonewalk Beauty (Downham)**  
644 Downham Way BR1 5HN  
stonewalkbeauty.com

**Tuttii Fruittii (Deptford)**  
2C Douglas Way SE8 4AG  
tuttiifruittiiilondon.com



Inspire Beauty



Tuttii Fruittii



### Discover Lewisham's gifts for children

Games, books, puzzles, clothes and more – you can find gift ideas galore for younger ones, in our many independent gift shops.



**Jumping Bean**



**The Find Store**



**Moon Lane Books**

**Gently Elephant (Brockley)**  
169 Brockley Road, SE4 2RS  
gentlyelephant.co.uk

**Ottie and the Bea (Blackheath)**  
12 Old Dover Road SE3 7BT  
ottieandthebea.com

**The Find Store (Lee)**  
133 Burnt Ash Road SE12 8RA  
thefindstore.co.uk

**Moon Lane Books (Forest Hill)**  
300 Stanstead Road SE23 1DE  
moonlaneink.co.uk

**Jumping Bean (Honor Oak)**  
45 Honor Oak Park SE23 1AE  
jumpingbeanshop.co.uk

### Discover Lewisham's gifts for grown-ups

Why should children have all the fun? Lewisham's independent businesses have a huge range of gift ideas for adults too. Offering everything from recipe books to clothes, from houseplants to bottled cocktails, they have your every gifting need covered.



**Bottle Bar and Shop**



**Magi Gifts**



**Mmea**

**Magi Gifts (Brockley)**  
193 Brockley Road SE4 2RS  
magigifts.co.uk

**House of Lewisham**  
18 Catford Broadway SE6 4SN  
houseoflewisham.com

**Bottle Bar and Shop (Catford)**  
2 Catford Broadway SE6 4SP  
bottlebarandshop.com

**Mmea (Honor Oak)**  
19-21 Brockley Rise SE23 1JG  
mmea.london

**SHAPESLewisham**  
shapeslewisham.co.uk/shop

# Festive food

**Raheem Morgan, our award-winning head chef at Torridon Primary School, has created a tasty cost-effective festive recipe for you**



Try this flavour-packed bubble and squeak pie with an island infusion twist. I've used an easy 'any kind of' ingredient approach to take away some of the stress when it comes to meal planning and help make your food cupboard stretch a bit further.

I've also included some energy saving cooking steps: continue to cook out ingredients with the heat turned off, and there's also no need to pre-heat an oven.



## Any Veg Spicy Bubble and Squeak Pie

### Topping recipe

- 600g any kind of potato (peeled)
- 80g any kind of green cabbage or leaf
- 80g any kind of root vegetable (eg carrot, swede, celeriac)
- 80g any kind of onion
- 80g any kind of grated vegan cheese (optional)
- 1/2 vegetable stock cube

### Method

1. Shred cabbage, grate root vegetable and chop onion. Mix and set aside.
2. Peel and cut potatoes into 5cm chunks. Place in a pan with the crumbled stock cube and add enough water to just cover.
3. Cook until potatoes start to soften then stir in the prepped vegetable mix, turn off the heat, cover, and allow to soak in hot potato/stock water for a couple of minutes.

4. Drain well, keeping the cooking water to one side and then mash potato veg mix while still hot. Set aside.

### Pie filling recipe

- 30ml any kind of cooking oil
- 300g any kind of peeled pumpkin or squash
- 300g any kind of cooked chickpea, pulse or lentil
- 150g any kind of sweet pepper
- 80g any kind of onion
- 1 tsp chopped garlic
- 1 tsp chopped ginger
- 30ml of any kind citrus juice
- 60g any kind of gravy powder or granules
- 1 tsp any kind of herb
- 2 tbs any kind of curry powder

### Method

1. Finely chop garlic and ginger, thinly slice peppers and onions, and mix all together.
2. Add the oil in saucepan and

- cook the onion mix for two minutes, mix in spices and herbs, and then switch off heat and leave.
3. Cut the pumpkin/squash into 1cm dice and add to the onion pan along with the chickpeas/pulses, mix altogether and cook out for another five minutes.
4. Mix the gravy powder and 250ml of the left-over potato stock, pour over vegetable mix and cook out for a further 5 minutes.
5. Adjust thickness with spare potato stock if needed and then add the pie filling to a suitable oven proof dish and allow to cool a little.
6. Carefully top the pie filling with the bubble mixture, spreading out evenly with a fork.
7. Bake in oven for 15 minutes at 180C, then switch off heat and leave in oven with door shut for another 10-15 mins
8. Remove from oven and serve.



Visit one of our markets this holiday season

# Market place



Stay local and keep money in Lewisham on Small Business Saturday on 3 December



The Lewisham Market Winter Festival is in full swing and runs over four consecutive Saturdays from now until mid-December:

- Saturday 26 Nov, 10am–3pm
- Saturday 3 Dec, 10am–3pm
- Saturday 10 Dec, 10am–3pm
- Saturday 17 Dec, 10am–3pm

Enjoy the festive season with musical performances, both new and established delicious food stalls, a free Santa's grotto and all the fantastic regular local traders.

Visit [lewisham.gov.uk/WinterFestival](http://lewisham.gov.uk/WinterFestival) for more information.

On 10 and 17 December, there are additional markets happening inside Lewisham Shopping Centre: the Bank of Things at Unit 19 will be open and selling gifts from stalls run by Lewisham's young people on 10 December, and on both 10 and 17 December the Grand Cultural Christmas Market will be open for all at the We Are Lewisham unit.



## Elsewhere around the borough

Don't forget the regular markets – lots will have extra stalls selling local gifts and food at this time of year.

### Street markets

#### Deptford Market

A wide variety of food from many different cultures, haberdashery, clothing and accessories.

Wednesdays, Fridays and Saturdays, 9am–5.30pm, Deptford High Street

#### Catford Market

A range of stalls selling

toys, clothes, plants, food and multicultural goods.

Monday to Saturday, 9am–5.30pm, Catford Broadway

### Farmers' markets

#### Blackheath Farmers' Market

Sundays, 10am–2pm, Blackheath Station car park, SE3 9LA

#### Brockley Market

Saturdays, 10am–2pm,

Lewisham College car park, Lewisham Way SE4 1UT

#### The Horniman Market

Sundays, 10am–3pm, Horniman Gardens, 100 London Road, SE23 3PQ

#### Telegraph Hill Food Market

Saturdays, 10am–3pm, entrance on corner of Erlanger Road and Arbuthnot Road, SE14 5LS

# Young Mayor signs off

It's been a busy year for the Young Mayor! We find out more from Rosanna Campbell, as she prepares to finish her term as the 17th Young Mayor of Lewisham



Rosanna Campbell

I've had such an amazing year! I really encourage anyone who is thinking of running for Young Mayor to give it a go.

I've done things I'll never forget, like lighting the beacon on Blackheath for the Queen's Jubilee and meeting Sadiq Khan on Day One of London Borough of Culture!

Alongside the Young Advisors, I've done lots of work with the Tacking Race Inequalities in Education pledge including encouraging schools to take on the Halo code which gives children and young people the freedom to wear all afro-hairstyles without restriction or judgment. We want young people to have the chance to talk about these things together; discrimination and racism and how it can affect us all.

The Young Advisors meet every Monday after school. We do a lot of work and have fun too! If being the next Young Mayor isn't for you, then why not join Young Advisors?

Election day for the next Young Mayor is Wednesday 8 February 2023

## Get funding for your organisation!

One of this year's Young Mayor budget projects is to fund organisations led by young people.

We have small funding pots available to explore how we can work together to address some of the things young people have said make them feel unsafe; for example scamming or sexual harassment.

For more information and an application form email: [katy.brown@lewisham.gov.uk](mailto:katy.brown@lewisham.gov.uk)

## Bank of Things and Lewisham Shopping Centre Christmas appeal

We are looking for the following donations, new and unopened:

- Gloves in neutral colours
- Socks
- Toiletries
- Pre-paid gift cards of £10
- Book Tokens
- bags of sweets (vegetarian) and chocolates.

All donations will be packaged up and delivered to Lewisham's most vulnerable young people in time for Christmas. Please drop any donations into Unit 19 or use Lewisham Shopping Centre's Giving Tree.



**Date for your diary**  
Come to the Bank of Things Christmas Market on 10 December @unit 19

If you're a young person and would like to have a stall, get in touch by emailing [katy.brown@lewisham.gov.uk](mailto:katy.brown@lewisham.gov.uk)

# Celebrating your favourite local businesses

There was a party atmosphere at Catford Library as winners of the 13th annual Mayor of Lewisham Business Awards were revealed at a special ceremony

**15** accolades were given out at the event which took place on Wednesday 9 November – recognising the outstanding achievements and contributions of the borough’s local businesses. This year, for the first time ever, residents voted to decide the winners in all but one category. The Lewisham Legacy award was decided by a panel of judges, including the Mayor, and was scooped by the Rivoli Ballroom – a local cultural gem.



Lewisham Legacy:  
Rivoli Ballroom



Best new business:  
Ed Baker



Best in creative sector:  
Lewisham Youth Theatre



Ignition Brewery:  
finalist, Best  
community  
contribution



Elements Bar (finalists) with Successful  
Mums Career Academy and Kanvas Design



Here are the winners of the Mayor of Lewisham Business Awards 2022 in full:

- Best visitor attraction: Horniman Museum and Gardens
- Best green business: Shop Without Packaging (SWOP)
- Best online business: IFE Foods
- Best community contribution: Lewisham Donation Hub
- Best new business: Ed Baker
- Best in creative sector: Lewisham Youth Theatre
- Best independent high street business: You Don't Bring Me Flowers
- Best café: Le Delice
- Best restaurant: Sparrow
- Best bar or pub: Drink at Bob's
- Best hair and beauty: George's Barber
- Best independent food retailer: Turkish Food Centre
- Best tradesperson: Mister Cobbler
- Best market: Lewisham Market
- Lewisham Legacy: Rivoli Ballroom



“What a great way to celebrate the fantastic achievements of our independent businesses. They contribute so much to life in Lewisham. Not only do they boost the local

economy and create jobs for local people, they also go above and beyond to give back to the community.”

“A huge well done to this year’s winners and runners-ups who represent the very best of the borough – they should all be very proud indeed.”

Cllr Kim Powell  
Cabinet Member for Businesses,  
Jobs and Skills

The Mayor of Lewisham Business Awards 2022 were sponsored by Balfour Beatty, Elkins Construction and Peabody Housing Association. Ardmore, Ixion Holdings, Sasson & Co. Accountants, L&Q, Numidia and Precious Sprouts. For more information, please visit [lewisham.gov.uk/businessawards](http://lewisham.gov.uk/businessawards)



Modern Building Traditional Values



Thanks to @Brockley3Peaks for letting us print this version

# Get outside

Our award-winning parks are the perfect place to let off steam and walk off a heavy lunch. Walking is a great way to meet up with friends over the holidays, plus it's healthy and free.

## The Brockley Three Peaks walk

A circular 8km walk that takes in spectacular views of London from Hilly Fields, One Tree Hill and Blythe Hill and the valley of the river Ravensbourne.

The map was produced by Lynda Durrant at Full Circle Design and Sarah Brooke, a former student at Prendergast Sixth Form, drew the buildings. Sarah is currently doing a Master's degree at Cambridge University.

The walk is hugely popular with locals, some of whom complete it several times a week! Larger copies of the map are available at Hilly Fields café for a donation of £1 to cover reproduction costs.

## Other local walks

Our green spaces north and south of the borough are covered in a number of walks – you can search the Transport for London website for more details:

- Capital Ring
- Green Chain
- Thames Path

# CELEBRATING AUTUMN

Our year as the Mayor's London Borough of Culture 2022 has been all about coming together to create incredible moments of celebration and change

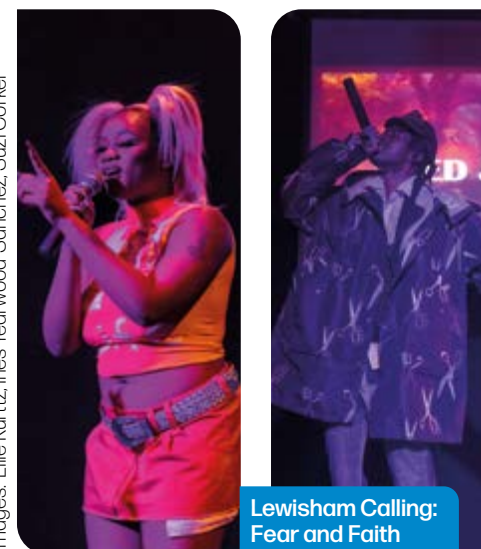


Close To Home: The Mass Dance Event

The autumn was packed with fantastic events spotlighting local talent. Lewisham's very own Novelist headlined a gig at the Albany and over 1,000 residents came together to celebrate the diversity of our borough at Close To Home: The Mass Dance Event. We've explored our history, got creative at pop up events in our parks and libraries and got stuck into creative challenges. It's not over yet! Turn over the page for details on our spectacular finale event and follow @WeAreLewisham on social media for more.



Family Pop Up



Lewisham Calling: Fear and Faith



October Creative Challenge with Dalmain Primary School

Images: Ellie Kurtz, Ines Yearwood-Sanchez, Suzi Corker

# LIT!

Join us as we come together for a spectacular finale to celebrate our year as London Borough of Culture 2022

Visit **Beckenham Place Park 20-22 December** to explore **free, magical illuminations** at a fantastic, festive event for all ages. Make an evening of it with music and winter food and drink.

If visiting on 21 December, look out for a mass performance as we come together to celebrate and bring light to the park on the shortest day of the year. See Illumination Highlights and visit the We Are Lewisham website for details.

You can also catch The Revel Puck Circus' joyful show *The Wing Scuffle Spectacular* and enjoy a family fun fair, 15 December 2022-8 January 2023.



DUNDU, produced by Festival.org

## ILLUMINATION HIGHLIGHTS

- See 'Lightweight', an interactive light installation by Impossible Arts 20-22 December.
- Visit on 20 or 21 December to see 'DUNDU', a large scale, illuminated puppet that has enthralled spectators worldwide.
- On 21 December, an illuminated parade will feature a samba band, choir and a community performance.

Visit [wearelewisham.com/lit](http://wearelewisham.com/lit) for full details and to plan your visit.

Lightweight, produced by Festival.org



50 metres to main entrance from Beckenham Hill Station  
Beckenham Hill station

500 metres to buses at The Green Man  
136, 181, 208, 320

**MAIN ENTRANCE**  
Beckenham Hill Road  
(54 bus stops outside)

Stumps Hill Wood entrance

**KEY:**  
 Illuminated areas  
 Illuminated paths  
 Toilets  
 Accessible toilets  
 Bar  
 Limited parking

**KEY INFORMATION**  
 Parking is very limited via main entrance only. Please walk or use public transport. Please dress for the weather.



Beckenham Place Park

**A place for all to enjoy**

@beckenhamplacepark  
 beckenhamplacepark.com

MOO SOOL ACADEMY OF MARTIAL ARTS SE6

**YUSOOL**  
 (KOREAN JIJITSU)

Classes for all ages: 5yrs+, Teens & Adults

**\*FIRST CLASS FREE\***

w moosoolacademy.com  
 e info@moosoolacademy.com  
 t 07710407021

**The LIFELONG LINGUIST**

Advanced online French and Spanish group and individual lessons

Pass your GCSE with top marks

**FREE 30 minutes discovery lesson**

Classes: 10 yrs+, GCSE and A-levels

www.the-lifelong-linguist.co.uk  
 E: adouillet@the-lifelong-linguist.co.uk

**THE STUDIO SE6**  
 YOGA • PILATES

WWW.THESTUDIOSE6.COM

E: info@thestudiose6.com  
 T: 07961440762

# FUN FOR ALL THE FAMILY

As part of LIT! our London Borough of Culture finale celebrations, London's biggest contemporary circus bring their five star show to Lewisham.



‘TONS OF HEART AND BUCKETS OF JOY’  
★★★★★  
To Do List



**J**oin **The Revel Puck Circus** for a new tradition this winter as they find joy on the edge of fear. Suitable for all ages, The Wing Scuffle Spectacular is circus like you've never seen it before - with 'acrobatics, teeterboard, wire walking and incredible feats'.

Make a day or evening of it with festive drinks and treats in a cosy bar ahead of the performance. Every seat in the house is the best seat in the house in the heated and atmospheric big top.

**KEY INFORMATION**  
**Where:** A heated big top in Beckenham Place Park  
**When:** 15 December - 8 January  
 Afternoon and evening shows  
**Tickets:** £17, £13 concessions  
 Visit [wearelewisham.com/revel-puck](http://wearelewisham.com/revel-puck) for full details and to plan your visit.

**We Are Lewisham** is committed to welcoming all communities and recognise that the festive period can be challenging for many families. Over 500 £1 tickets to the show are being distributed through community networks, to those who are unable to pay full price.

- FF** Family Friendly
- M** Music
- O** Outdoor
- T** Theatre
- VA** Visual art
- WS** Workshop
- YP** Young People

## ALSO COMING UP

More event highlights to look forward to happening across the borough, from theatre to family fun.

Visit [WeAreLewisham.com](http://WeAreLewisham.com) for full details of these events and more - and to book tickets if needed, before you attend.

**30 November - 14 December**

**VA O BREATHE: 2022**  
 Dryden Goodwin's striking artwork, Breathe:2022, has appeared across the borough since May. Don't miss this new, large-scale animated projection lighting up the sky in Catford from dusk to dawn.  
*Lewisham Town Hall, Catford, SE6 4RU, FREE*



BREATHE: 2022

Image: Dryden Goodwin and Invisible Dust

**1 December**

**YP WS Creative Futures - Working with Young People in the Arts**  
 Interested in working in Youth Arts? Join this celebratory event hosted by Second Wave, for live performances and a discussion

with professional creatives.  
*Second Wave, 1 Creek Road, Deptford, SE8 3BT, FREE*

**8 December**

**YP WS Creative Futures - Being Part of a Creative Team in Theatre**  
 Want to write, direct or design

for theatre or learn about producing? Kick-start your career and meet professional creatives in this masterclass and Q&A event.  
*Lewisham Youth Theatre, 142-144 Lewisham High Street, SE13 6JG, FREE*

## PARTNER EVENTS

**3-24 December**

**FF T The Tin Foil Astronaut**  
 Join the Man in the Moon on a journey to a little known planet called Earth. Perfect for ages 3-7, this space adventure about believing in yourself features rocking music and puppets. Presented by KitchenZoo in association with the Albany and ARC Stockton.

*Tickets: [thealbany.org.uk](http://thealbany.org.uk)  
 The Albany, Douglas Way, Deptford SE8 4AG, £*

**10 December**

**M Haven't Stopped Dancing Yet Xmas Disco Ball**  
 A fabulous night of 70s & 80s soul, funk and disco in a beautiful Grade II listed ballroom.  
*Blackheath Halls, Blackheath, SE3 9RQ, £*

**Until 5 March 2023**

**VA Internal Landscapes: Collective Art Exhibition**  
 Curated and produced by Dima Karout, Internal Landscapes is a creative investigation into Lewisham's meaningful places and how they inspire and shape its people.  
*The Horniman Museum and Gardens, SE23 3PQ, FREE*

# Better connected

Are you looking to give something back to the community in 2023? We met with Sam Hawksley, CEO of Lewisham Local to find out how you can help.

## Can you tell us a bit more about Lewisham Local

We are a local charity, in Lewisham (believe it or not!) and we work to raise the profile of different causes in Lewisham and to make people more aware of the needs.

We also encourage people to give what they can – whether that is time, money, skills or stuff.

## Can you give some examples of what you do?

We help people get involved in their local community, through volunteering and through our projects. Some support lonely and isolated people who come to us for help such as Time Bank, FoodCycle Lewisham and Wild Cat Wilderness. We give them a confidence boost and remind them of what they can do as well as supporting them.

We run Community Toilets Lewisham (to widen the availability of public toilets across the borough) and Refill Lewisham, a scheme to try and reduce single use plastic waste. We also encourage people to go into local businesses. We launched the Lewisham Local Card which gives discounts in local shops. Volunteers get one for free or you can buy one on our website for £10 and help raise money for good causes.

## Who is involved in Lewisham local?

We have 15 staff, over 200 volunteers and members across our projects, many of whom may be lonely or struggling financially. We also do a lot of work supporting other local community groups.

We do a lot to try and encourage volunteers. Everyone's got a skill, and most people have



Sam Hawksley, far left, with some of the Lewisham Local team

## Time to help out

We would love more people to sign up to be volunteers! Visit [lewishamlocal.com](http://lewishamlocal.com) to find roles and register.

some spare time – how can you use that time in a different way?

## Have you noticed any changes in the last two years?

Covid was the best and worst of times. The need dramatically increased but we had a lot of people offering their time and volunteering.

The furlough scheme really boosted the volunteering network, we had a lot of really committed people putting lots of time in which really benefitted charities.

As things opened up those people went back to work and we are really struggling to find volunteers at the moment, especially for projects like befriending older and isolated people, and for our foodbanks which are in desperate need of volunteers and donations.



Lewisham's directly elected Mayor, Damien Egan, represents the whole borough. Contact him at [damien.egan@lewisham.gov.uk](mailto:damien.egan@lewisham.gov.uk)

Please check beforehand whether your Councillor is holding in person surgeries. Visit [lewisham.gov.uk/mayorandcouncil](http://lewisham.gov.uk/mayorandcouncil) or call 020 8314 6000 and ask for 'operator'.

### Bellingham

**Clr Rachel Onikosi**  
[rachel.onikosi@lewisham.gov.uk](mailto:rachel.onikosi@lewisham.gov.uk)  
☎ 020 8314 9021  
**Clr Jacq Paschoud**  
[jacq.paschoud@lewisham.gov.uk](mailto:jacq.paschoud@lewisham.gov.uk)  
☎ 020 8291 5729

### Blackheath

**Clr Juliet Campbell**  
[juliet.campbell@lewisham.gov.uk](mailto:juliet.campbell@lewisham.gov.uk)  
☎ 020 8314 9386  
**Clr Amanda De Ryk**  
[amanda.deryk@lewisham.gov.uk](mailto:amanda.deryk@lewisham.gov.uk)  
☎ 020 8314 3789  
**Clr Luke Warner**  
[luke.warner@lewisham.gov.uk](mailto:luke.warner@lewisham.gov.uk)  
☎ 020 8314 8300

### Brockley

**Clr Sian Eiles**  
[sian.eiles@lewisham.gov.uk](mailto:sian.eiles@lewisham.gov.uk)  
☎ 020 8314 3415  
**Clr Ayesha Lahai-Taylor**  
[ayesha.lahai-taylor@lewisham.gov.uk](mailto:ayesha.lahai-taylor@lewisham.gov.uk)  
☎ 020 8314 6022  
**Clr Stephen Penfold**  
[stephen.penfold@lewisham.gov.uk](mailto:stephen.penfold@lewisham.gov.uk)  
☎ 020 8314 8817

### Catford South

**Clr Natasha Burgess**  
[natasha.burgess@lewisham.gov.uk](mailto:natasha.burgess@lewisham.gov.uk)  
☎ 020 8314 3671  
**Clr James Royston**  
[james.royston@lewisham.gov.uk](mailto:james.royston@lewisham.gov.uk)  
☎ 020 8314 6696  
**Clr Eva Stamirowski**  
[eva.stamirowski@lewisham.gov.uk](mailto:eva.stamirowski@lewisham.gov.uk)  
☎ 07392 860305

### Crofton Park

**Clr Tauseef Anwar**  
[tauseef.anwar@lewisham.gov.uk](mailto:tauseef.anwar@lewisham.gov.uk)  
☎ 020 8314 9930  
**Clr Chris Barnham**  
[chris.barnham@lewisham.gov.uk](mailto:chris.barnham@lewisham.gov.uk)  
☎ 020 8314 9896  
**Clr Carol Webley-Brown**  
[carol.webley-brown@lewisham.gov.uk](mailto:carol.webley-brown@lewisham.gov.uk)  
☎ 020 8314 6713

### Deptford

**Clr Brenda Dacres**  
[brenda.dacres@lewisham.gov.uk](mailto:brenda.dacres@lewisham.gov.uk)

☎ 020 8314 9872

**Clr Stephen Hayes**  
[stephen.hayes@lewisham.gov.uk](mailto:stephen.hayes@lewisham.gov.uk)  
☎ 020 8314 6559  
**Clr Rosie Parry**  
[rosie.parry@lewisham.gov.uk](mailto:rosie.parry@lewisham.gov.uk)  
☎ 020 8314 6179

### Downham

**Clr Andre Bourne**  
[andre.bourne@lewisham.gov.uk](mailto:andre.bourne@lewisham.gov.uk)  
☎ 07875 082340  
**Clr Coral Howard**  
[coral.howard@lewisham.gov.uk](mailto:coral.howard@lewisham.gov.uk)  
☎ 020 8314 6310  
**Clr Oana Olaru**  
[oana.olaru@lewisham.gov.uk](mailto:oana.olaru@lewisham.gov.uk)  
☎ 020 8314 7783

### Evelyn

**Clr Will Cooper**  
[will.cooper@lewisham.gov.uk](mailto:will.cooper@lewisham.gov.uk)  
☎ 020 8314 3072  
**Clr Rudi Schmidt**  
[rudi.schmidt@lewisham.gov.uk](mailto:rudi.schmidt@lewisham.gov.uk)  
☎ 020 8314 8848  
**Clr Hau-Yu Tam**  
[hau-yu.tam@lewisham.gov.uk](mailto:hau-yu.tam@lewisham.gov.uk)  
☎ 020 8314 6001

### Forest Hill

**Clr Peter Bernards**  
[peter.bernards@lewisham.gov.uk](mailto:peter.bernards@lewisham.gov.uk)  
☎ 020 8314 9927  
**Clr Sophie Davis**  
[sophie.davis@lewisham.gov.uk](mailto:sophie.davis@lewisham.gov.uk)  
☎ 020 8314 3493  
**Clr Billy Harding**  
[billy.harding@lewisham.gov.uk](mailto:billy.harding@lewisham.gov.uk)  
☎ 020 8314 7966

### Grove Park

**Clr Suzannah Clarke**  
[suzannah.clarke@lewisham.gov.uk](mailto:suzannah.clarke@lewisham.gov.uk)  
☎ 020 8314 6944  
**Clr Mark Jackson**  
[mark.jackson@lewisham.gov.uk](mailto:mark.jackson@lewisham.gov.uk)  
☎ 020 8314 8390  
**Clr Hilary Moore**  
[hilary.moore@lewisham.gov.uk](mailto:hilary.moore@lewisham.gov.uk)  
☎ 020 8314 7886

### Hither Green

**Clr Yemisi Anifowose**  
[yemisi.anifowose@lewisham.gov.uk](mailto:yemisi.anifowose@lewisham.gov.uk)  
☎ 020 8314 8004

**Clr Mark Ingleby**  
[mark.ingleby@lewisham.gov.uk](mailto:mark.ingleby@lewisham.gov.uk)  
☎ 020 8698 8562  
**Clr Kim Powell**  
[kim.powell@lewisham.gov.uk](mailto:kim.powell@lewisham.gov.uk)  
☎ 020 8314 2051

### Ladywell

**Clr Bill Brown**  
[bill.brown@lewisham.gov.uk](mailto:bill.brown@lewisham.gov.uk)  
☎ 020 8314 9821  
**Clr Laura Cunningham**  
[laura.cunningham@lewisham.gov.uk](mailto:laura.cunningham@lewisham.gov.uk)  
☎ 020 8314 8011  
**Clr Liz Johnston-Franklin**  
[liz.johnston-franklin@lewisham.gov.uk](mailto:liz.johnston-franklin@lewisham.gov.uk)  
☎ 020 8314 7985

### Lee Green

**Clr Ese Erheriene**  
[ese.erheriene@lewisham.gov.uk](mailto:ese.erheriene@lewisham.gov.uk)  
☎ 020 8314 8022  
**Clr Eva Kestner**  
[eva.kestner@lewisham.gov.uk](mailto:eva.kestner@lewisham.gov.uk)  
☎ 020 8314 8031  
**Clr James Rathbone**  
[james.rathbone@lewisham.gov.uk](mailto:james.rathbone@lewisham.gov.uk)  
☎ 020 8314 7524

### Lewisham Central

**Clr Edison Huynh**  
[edison.huynh@lewisham.gov.uk](mailto:edison.huynh@lewisham.gov.uk)  
☎ 020 8314 8224  
**Clr Aliya Sheikh**  
[aliya.sheikh@lewisham.gov.uk](mailto:aliya.sheikh@lewisham.gov.uk)  
☎ 020 8314 8245

### New Cross Gate

**Clr Aisha Malik-Smith**  
[aisha.malik-smith@lewisham.gov.uk](mailto:aisha.malik-smith@lewisham.gov.uk)  
☎ 020 8314 3496  
**Clr Liam Shrivastava**  
[liam.shrivastava@lewisham.gov.uk](mailto:liam.shrivastava@lewisham.gov.uk)  
☎ 020 8314 8298

### Perry Vale

**Clr John Paschoud**  
[john.paschoud@lewisham.gov.uk](mailto:john.paschoud@lewisham.gov.uk)  
☎ 020 8314 3437  
**Clr Sakina Sheikh**  
[sakina.sheikh@lewisham.gov.uk](mailto:sakina.sheikh@lewisham.gov.uk)  
☎ 020 8314 7963  
**Clr Susan Wise**  
[susan.wise@lewisham.gov.uk](mailto:susan.wise@lewisham.gov.uk)  
☎ 020 8314 2214

### Rushey Green

**Clr Louise Krupski**  
[louise.krupski@lewisham.gov.uk](mailto:louise.krupski@lewisham.gov.uk)  
☎ 020 8314 8983  
**Clr John Muldoon**  
[john.muldoon@lewisham.gov.uk](mailto:john.muldoon@lewisham.gov.uk)  
☎ 020 8314 9058  
**Clr James-J Walsh**  
[james-j.walsh@lewisham.gov.uk](mailto:james-j.walsh@lewisham.gov.uk)  
☎ 020 8314 9948

### Sydenham

**Clr Chris Best**  
[chris.best@lewisham.gov.uk](mailto:chris.best@lewisham.gov.uk)  
☎ 020 8314 8907  
**Clr Liam Curran**  
[liam.curran@lewisham.gov.uk](mailto:liam.curran@lewisham.gov.uk)  
☎ 020 8314 6937  
**Clr Jack Lavery**  
[jack.lavery@lewisham.gov.uk](mailto:jack.lavery@lewisham.gov.uk)  
☎ 020 8314 6692

### Telegraph Hill

**Clr Paul Bell**  
[paul.bell@lewisham.gov.uk](mailto:paul.bell@lewisham.gov.uk)  
☎ 020 8314 7047  
**Clr Joan Millbank**  
[joan.millbank@lewisham.gov.uk](mailto:joan.millbank@lewisham.gov.uk)  
☎ 020 8314 6929  
**Clr Luke Sorba**  
[luke.sorba@lewisham.gov.uk](mailto:luke.sorba@lewisham.gov.uk)  
☎ 020 8314 9984

### Members of parliament

**Vicky Foxcroft MP**  
Lewisham Deptford  
☎ 020 8469 4638  
✉ [vicky.foxcroft.mp@parliament.uk](mailto:vicky.foxcroft.mp@parliament.uk)  
[www.vickyfoxcroft.org.uk](http://www.vickyfoxcroft.org.uk)

**Janet Daby MP**  
Lewisham East  
☎ 020 8461 4733  
✉ [janet.daby.mp@parliament.uk](mailto:janet.daby.mp@parliament.uk)  
[www.janetdaby.org](http://www.janetdaby.org)

**Ellie Reeves MP**  
Lewisham West and Penge  
☎ 020 7219 2668  
✉ [ellie.reeves.mp@parliament.uk](mailto:ellie.reeves.mp@parliament.uk)  
[www.elliereeves.com](http://www.elliereeves.com)

**Len Duvall AM**  
London Assembly Member for  
Greenwich and Lewisham  
☎ 020 7983 4350  
✉ [len.duvall@london.gov.uk](mailto:len.duvall@london.gov.uk)



# BOOST

your immunity this winter

Protect yourself with the free

**Flu jab + COVID -19 booster**

**Don't delay.  
Get vaccinated.**


**Call 119**

or search

**'NHS booking service'**

online to book your  
vaccinations



 SCAN ME

[selondonics.org/winter-vaccinations](https://selondonics.org/winter-vaccinations)