

Southeast London Boroughs' Joint Waste Apportionment Technical Paper

APPENDIX B: Strategic waste sites to be safeguarded in core strategies

Updated March 2010

Prepared by the Southeast London boroughs' joint waste working group: Bexley, Bromley, Greenwich, Lewisham and Southwark

**Southeast London Boroughs’ Joint Waste Apportionment Technical Paper
Appendix B**

London Borough of Bexley: strategic sites – maps and tables 4

London Borough of Bromley: strategic sites – maps and tables 12

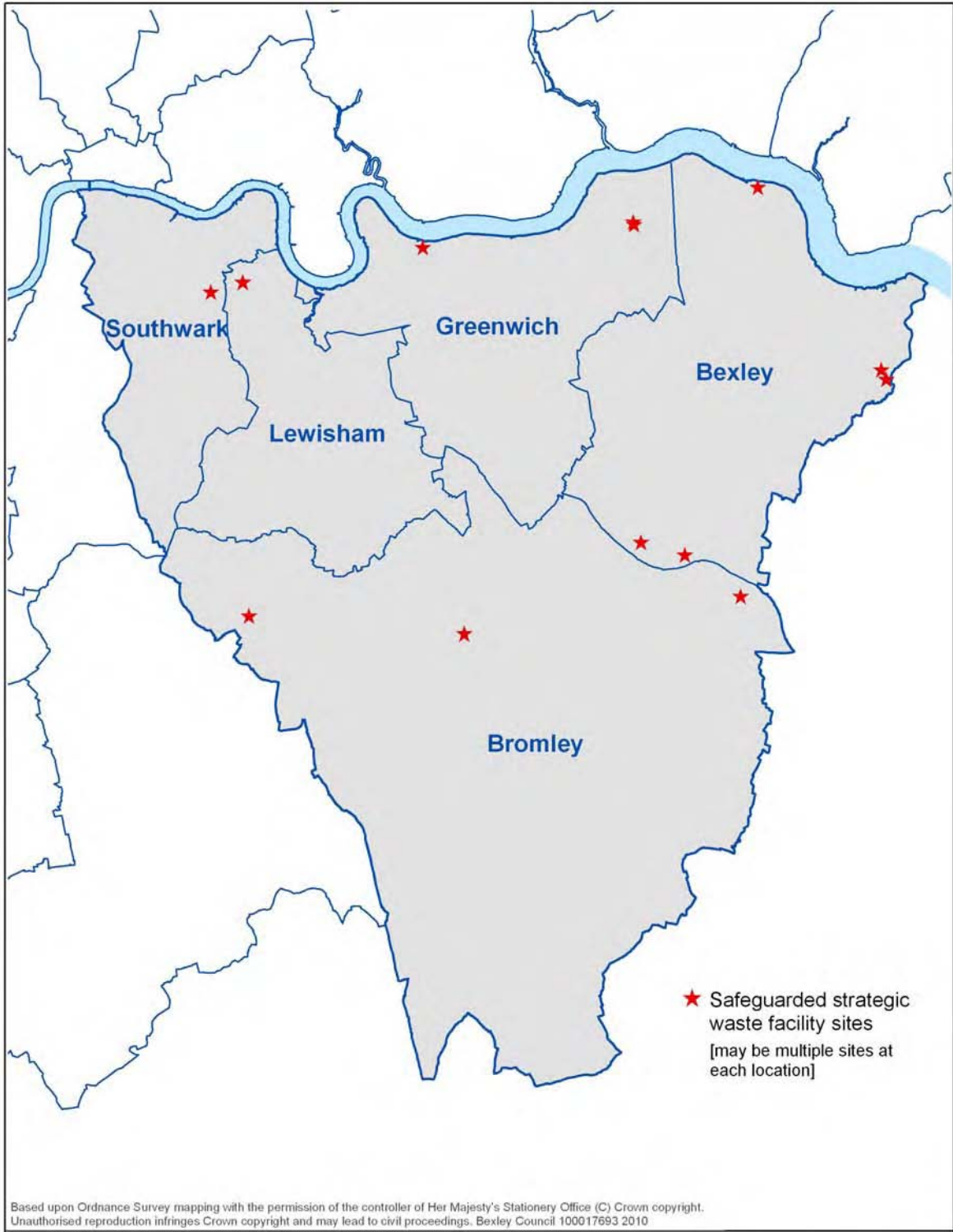
London Borough of Greenwich: strategic sites – maps and tables..... 18

London Borough of Lewisham: strategic sites – maps and tables..... 22

London Borough of Southwark: strategic sites – maps and tables..... 26

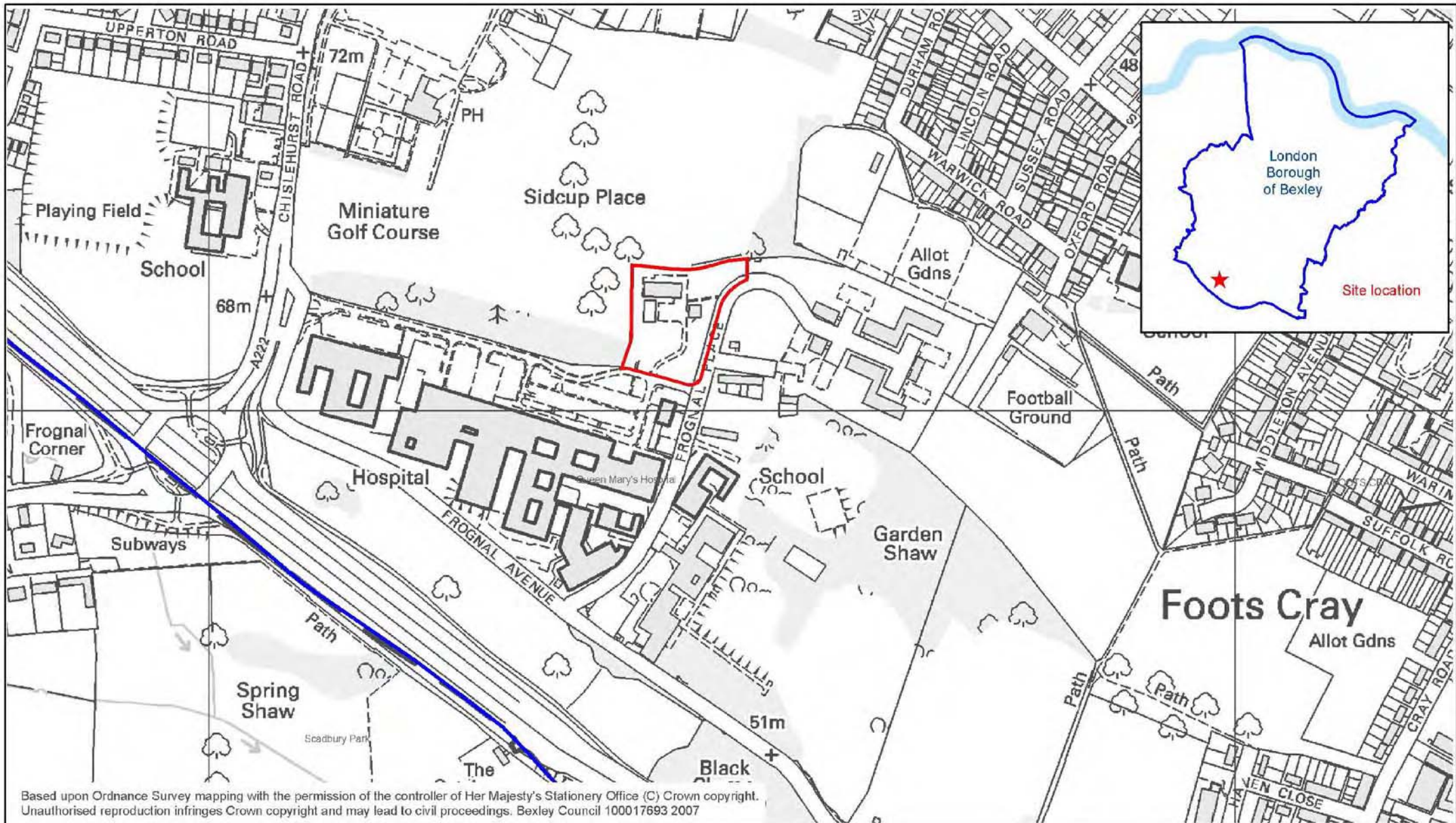
Introduction

This appendix to the southeast London boroughs' joint waste apportionment technical paper identifies the 18 safeguarded waste sites (locations shown on the map below) that provide the annual capacity to manage the amount of waste in the southeast London sub-region apportioned through the London Plan.



London Borough of Bexley: strategic sites – maps and tables

Facility	Clinical Waste Incinerator
Address	Queen Mary's Hospital, Sidcup Plant, Incinerator Building, Frognal Avenue, Sidcup, Kent DA14 6LT
Type of facility	Incineration
Type of waste	Clinical
Site Ownership	
Operator/Contractual Arrangements	SRCL Ltd (formerly White Rose Environmental Ltd)
Licensed annual throughput	8,000 tonnes
Future Plans	
Site area	0.53 ha
Apportionment capacity	6,365 tonnes
Notes	Final residual waste disposal facility. The amount listed is the actual throughput (averaged over three years), which is 80% of the permitted capacity shown on the Environment Agency's list of incineration facilities (2008). Currently operational.



Based upon Ordnance Survey mapping with the permission of the controller of Her Majesty's Stationery Office (C) Crown copyright. Unauthorised reproduction infringes Crown copyright and may lead to civil proceedings. Bexley Council 100017693 2007

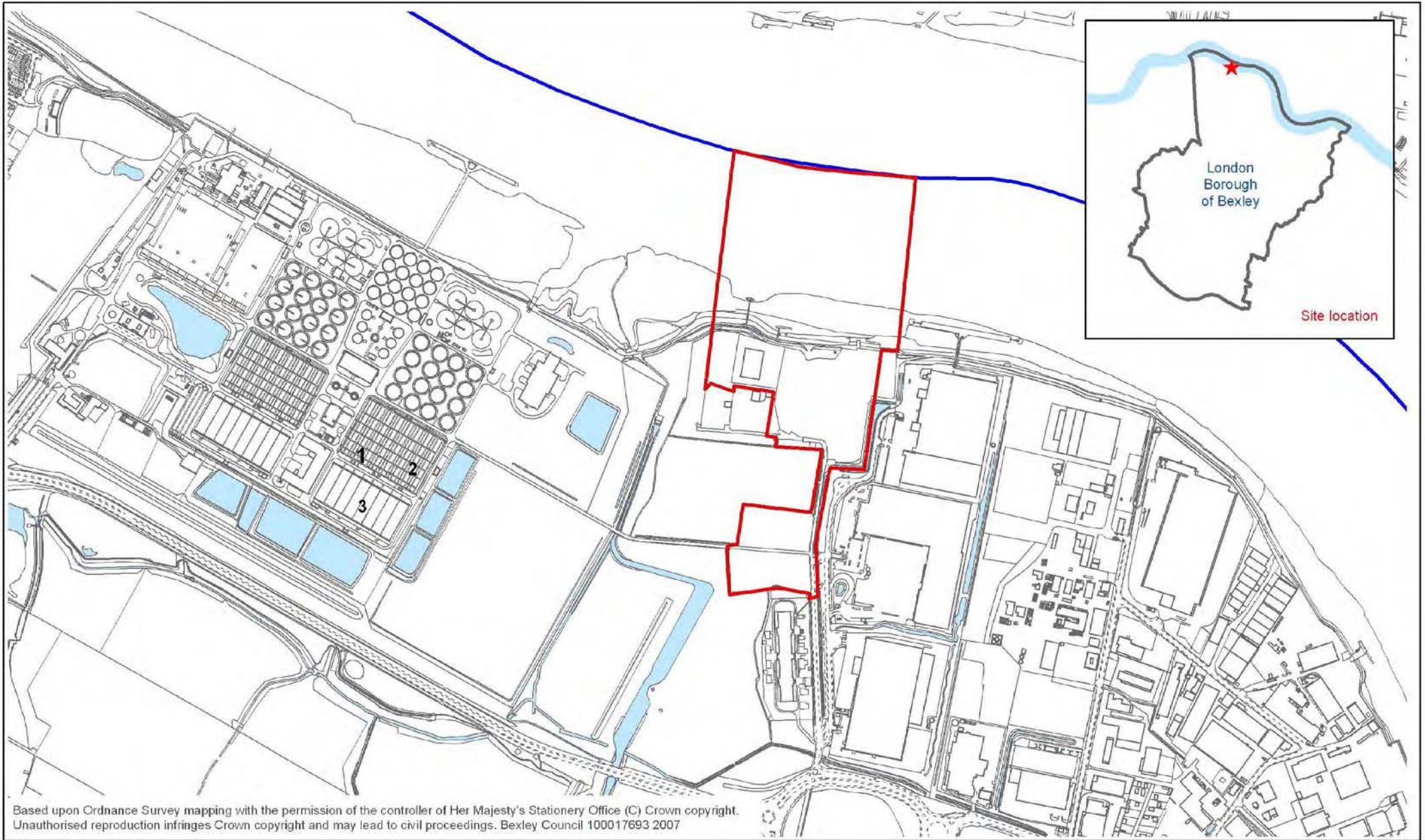


- Site boundary
- Borough boundary

**Clinical Waste Incinerator, Queen Mary's Hospital
Froggnal Place, Sidcup**

**Southeast London Boroughs' Joint Waste Apportionment Technical Paper
Appendix B**

Facility	Energy from Waste Facility, Riverside Resource Recovery
Address	Land adjacent River Thames, Norman Road, Belvedere, Kent
Type of facility	Incineration
Type of waste	Municipal, C&I
Site Ownership	Cory Environmental Ltd.
Operator/Contractual Arrangements	Cory Environmental Ltd.
Licensed annual throughput	700,000 tonnes
Future Plans	
Site area	9.10 ha [all operational land is 22.43 ha, including river]
Apportionment capacity	616,000 tonnes
Notes	<p>Final residual waste disposal facility. The amount listed is 88% (based on actual throughput of SELCHP) of the permitted capacity shown on the Environment Agency's list of incineration facilities (2008). This facility will become operational in 2011.</p> <p>Once operational, the actual annual throughput will be monitored, and the capacity figures revised accordingly.</p>

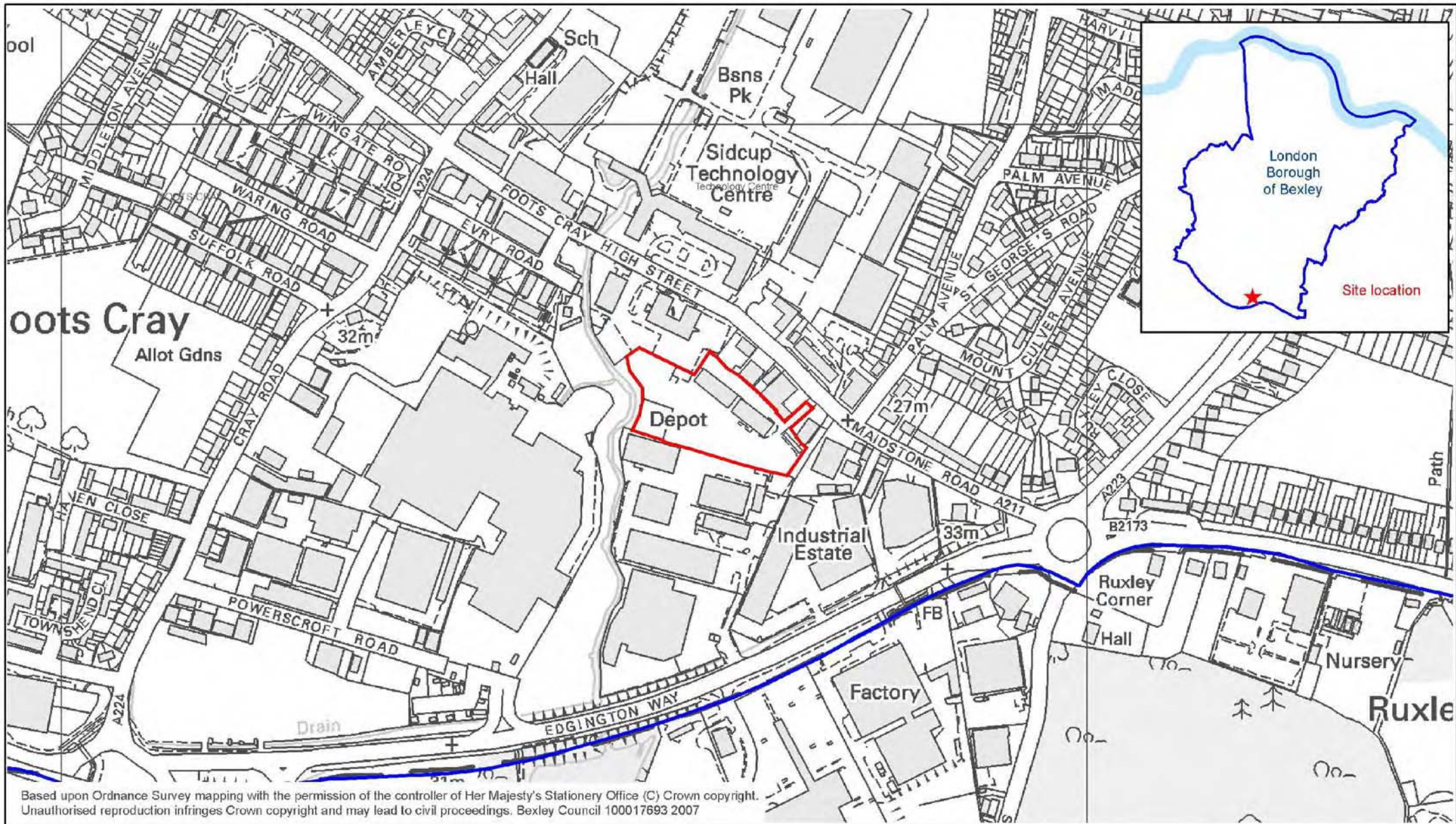


- Site boundary
- Borough boundary

**Southeast London Boroughs' Joint Waste Apportionment Technical Paper
Appendix B**

Facility	Foots Cray Reuse & Recycling Centre and waste transfer station
Address	Maidstone Road, Sidcup, DA14 5HS
Type of facility	Recycling, waste transfer
Type of waste	Municipal, C&I
Site Ownership	London Borough of Bexley
Operator/Contractual Arrangements	SITA UK, contracted until April 2012
Licensed annual throughput	75,000 tonnes [total waste, not just for recycling]
Future Plans	Recycling component: 40% in 2010; 45% in 2015; 50% in 2020; 55% in 2025
Site area	1.24 ha
Apportionment capacity	30,000 tonnes per annum [recycling component]
Notes	Council facility. Capacity shown is 40% of maximum annual capacity (74,999 tonnes), representing a 40% recycling rate. Capacity will be increased 5% for each 5-year period. Remainder of waste not shown, as this is not a final residual waste disposal facility. Currently operational.

Facility	Materials Recycling Facility
Address	Century Wharf, Crayford Creek, Crayford, DA1 [Site A on map on page 11]
Type of facility	Recycling
Type of waste	Municipal, C&I
Site Ownership	Viridor Waste Management
Operator/Contractual Arrangements	Viridor Waste Management
Licensed annual throughput	350,000 tonnes
Future Plans	
Site area	4.10 ha
Apportionment capacity	262,500 tonnes
Notes	This facility separates waste and recycling, and has a current licensed capacity of 350,000 tonnes per annum. The apportionment capacity is 75% of the permitted capacity. Currently operational.



Based upon Ordnance Survey mapping with the permission of the controller of Her Majesty's Stationery Office (C) Crown copyright. Unauthorised reproduction infringes Crown copyright and may lead to civil proceedings. Bexley Council 100017693 2007



- Site boundary
- Borough boundary

**Bexley Civic Amenity Site (Foots Cray Depot)
Maidstone Road, Foots Cray**