

Rushey Green Assembly

Neighbourhood Planning

June 2016



Lewisham

Claire Gray | Cheryl Maughan

Neighbourhood Planning

Localism

- The Localism Act 2011 introduces a new level of plan making, the Neighbourhood Plan.
- Local people set out the vision and planning policies for their own neighbourhood.



What is a Neighbourhood Plan?

Neighbourhood Plans contain planning policies for a neighbourhood area



Neighbourhood Plan Preparation



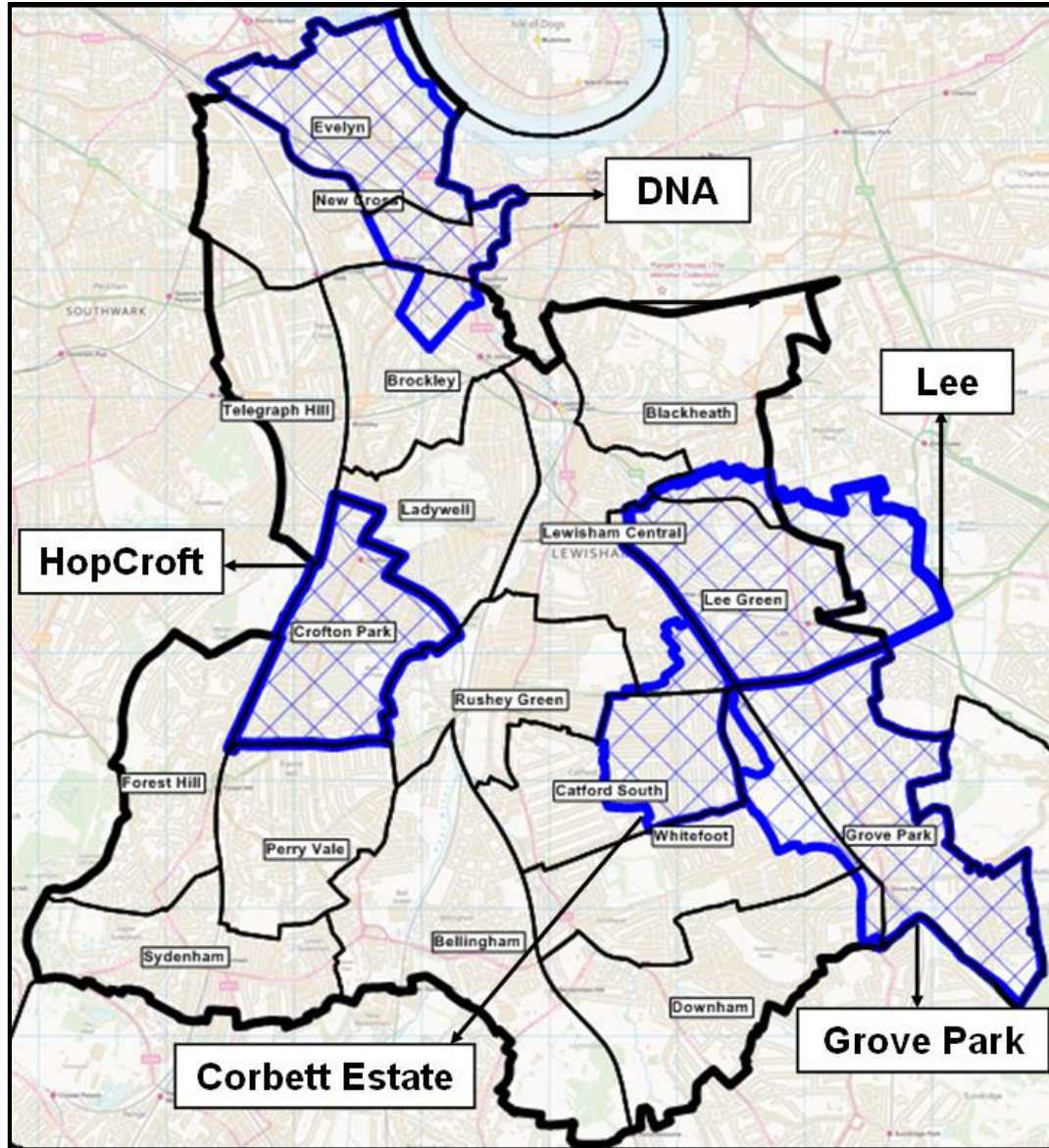
Neighbourhood Planning Process

Process

- **Step 1:** Community group submits two applications: Neighbourhood Forum + Neighbourhood Area
- **Step 2:** Neighbourhood Forum undertakes community engagement, and produces a draft Neighbourhood Plan
- **Step 3:** Neighbourhood Plan submitted to Council who arrange Independent Examination
- **Step 4:** Plan goes for a local referendum arranged by Council
- **Step 5:** Plan adopted by Council becomes a statutory plan



Neighbourhood Areas and Forums



Neighbourhood Planning in Lewisham

Existing Neighbourhood Areas:

Crofton Park and Honor Oak Park (HopCroft)

- Designated 16th July 2014

Grove Park

- Designated 23rd October 2014.

Corbett Estate

- Designated 22nd April 2015.

Lee (cross borough)

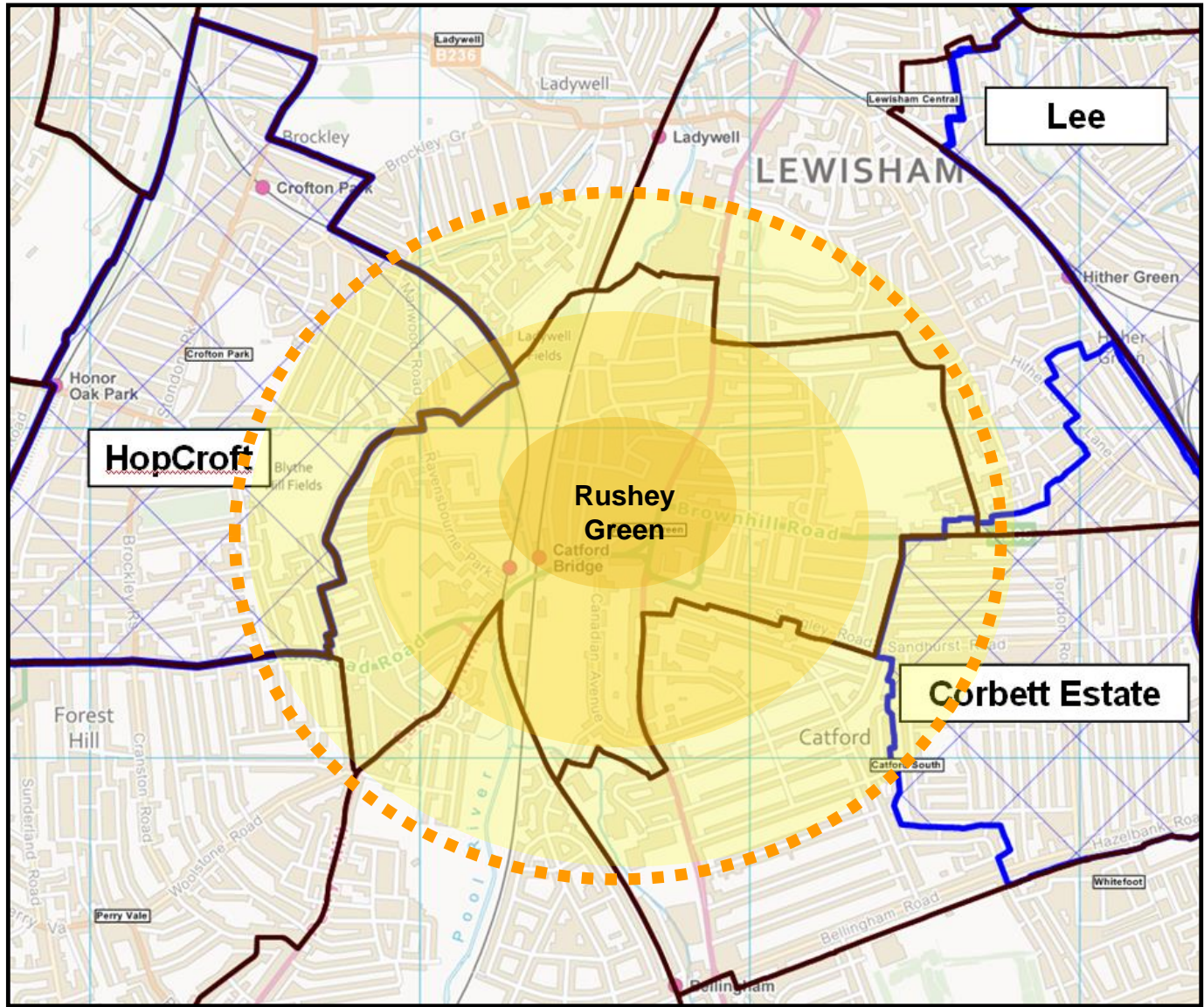
- Designated 13th January 2016

Deptford Neighbourhood Action

- Designated 17th February 2016



Neighbourhood Planning in Rushey Green

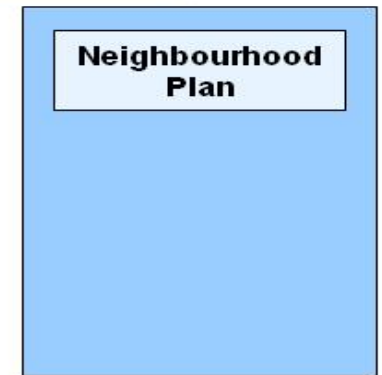
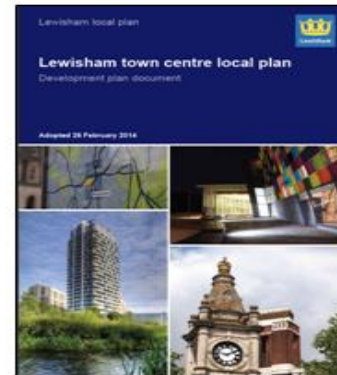
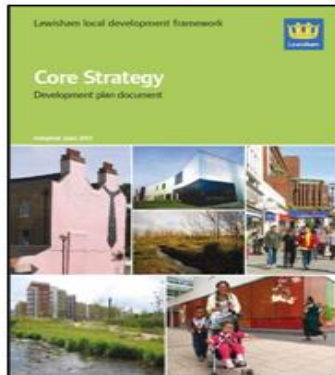


Neighbourhood Planning in Rushey Green



Rushey Green - proposed

Planning Framework for decisions



Neighbourhood Planning in Rushey Green

Neighbourhood plans can...

- Influence the type of development in the area
- Influence where development will go
- Influence what development will look like

Neighbourhood Plans can't...

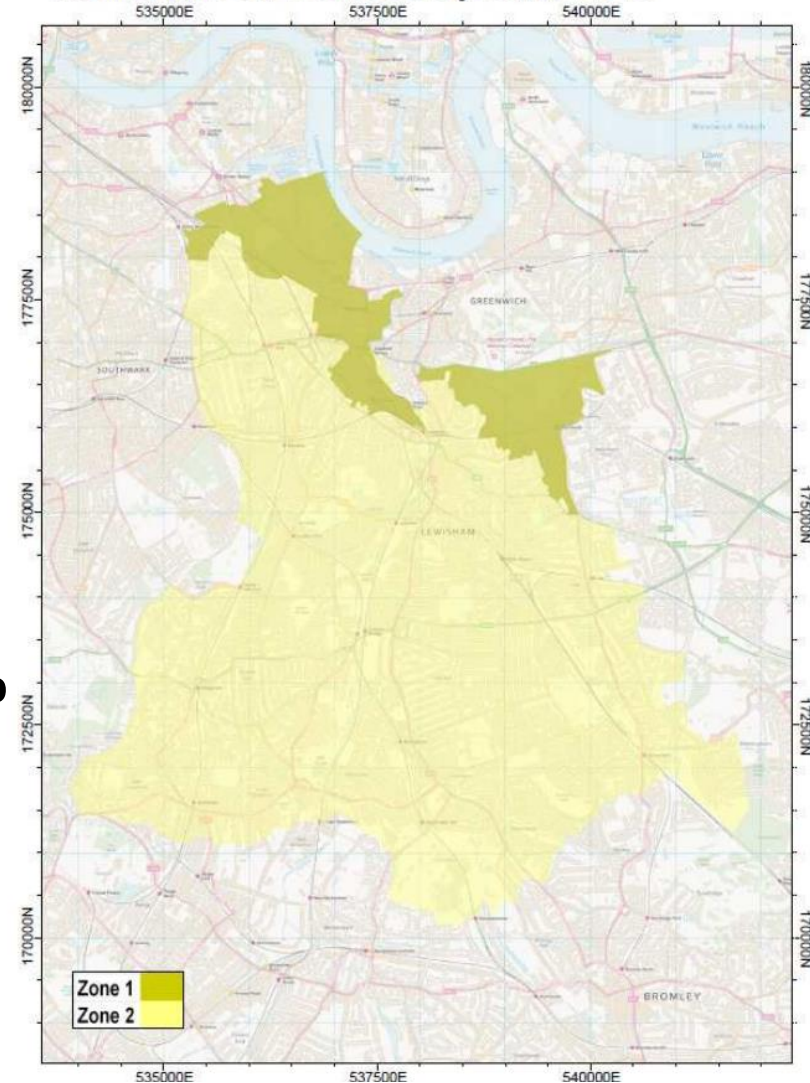
- Conflict with strategic planning policy
- Stop development
- Control non-planning related issues



Neighbourhood Planning in Rushey Green

- Neighbourhood plans can set local priorities for CIL monies received from local development
- Increase in CIL monies to be spent locally from **15%** to **25%** where there is a Neighbourhood Plan or Neighbourhood Development Order in place

Lewisham CIL Zones Map June 2013



Useful information

- National Planning Practise Guidance – Neighbourhood Planning. www.planningguidance.communities.gov.uk
- Locality. www.locality.org.uk
- Lewisham Council website – Neighbourhood Planning pages. www.lewisham.gov.uk
- Contact: Cheryl.maughan@lewisham.gov.uk | 0208 314 6438



QUESTIONS