

Energy Company Obligation Help to Heat

Lewisham Statement of Intent on Flexible Eligibility



Local authority: Lewisham Council

Date of publication: 19 April 2018

Version: 3.0

URL: <http://www.lewisham.gov.uk/getinvolved/environment/energyefficiency/taking-the-lead/Pages/default.aspx>

1) Introduction

Lewisham Council welcomes the introduction of Flexible Eligibility (FE) and intends to utilise it for the purposes of reducing fuel poverty in the borough.

Fuel poverty is an important local priority and the Council will look to align work on 'Help to Heat' with existing work to support households vulnerable to living in a cold home.

The Council will look to work with energy suppliers and their partners delivering the Help to Heat obligation. The final decision on whether any individual household will benefit from energy saving improvements rests with obligated energy suppliers or their contractors. Inclusion in a Declaration of Eligibility issued by the Council to a supplier will not guarantee installation of measures. The final decision will depend on i) identification of measures eligible under Help to Heat ii) the supplier's assessment of the cost-effectiveness of installing measures in relation to achieving its obligation, and iii) whether the supplier has achieved their targets or require further measures to meet their Energy Company Obligation targets.

In identifying households as eligible under flexible eligibility Lewisham Council is seeking to enable residents to benefit from funding. Lewisham Council expects any obligated energy supplier, or contractor working on their behalf, to comply with the Data Protection Act, to fully follow Ofgem requirements for the Energy Company Obligation Help to Heat, and to act in accordance with industry best practice in relation to consumer care and quality standards of any works that may take place.

Where resources allow, Lewisham Council is willing to work with other London boroughs to deliver flexible eligibility under the provisions for delegation set out in the BEIS guidance on Flexible Eligibility. The Council welcomes the opportunity to develop partnerships that can achieve more for the region as a whole, and will look to draw on resources from the third sector and the private sector in delivering local solutions that benefit residents. Part 3 of this document identifies the other local authorities Lewisham Council will make declarations on behalf of.

2) How Lewisham Council intends to identify eligible households

Lewisham Council will identify households that may benefit from flexible eligibility in a number of ways:

a. Identifying fuel poverty

Subject to availability of resources within the Council, and the legal use of data, the Council will target those most in need having regard to BEIS guidance on targeting. This will identify households on a low income facing high energy costs to heat their home.

Low income households are defined as one or more of the following:

- i. Households with a net annual income after housing costs lower than the mean net annual income for their borough (equivalised, after housing costs)¹
- ii. Households in a lower super output area in the 30% most deprived nationally²

A household facing high energy costs is defined as one or more of the following:

- i. A household living in a home with an Energy Performance Certificate lower than band C
- ii. A household living in a home with a prepayment meter
- iii. A household where the main heating fuel is not gas
- iv. A household where at least one member of the household spends most of the day in the home
- v. A household in the privately rented sector
- vi. A household in need of a boiler replacement³

b. Identifying low income and vulnerable to the effects of living in a cold home

Subject to availability of resources within the Council, and the legal use of data, the Council will target those most in need having regard to BEIS guidance on targeting. Households that are deemed to be low income and vulnerable to the effects of living in a cold home are defined as:

- i. Households referred through Lewisham's Warm Homes Healthy People project⁴

¹ E.g. Latest ONS data for Lewisham (2014) mean household income £26,274

<https://www.ons.gov.uk/peoplepopulationandcommunity/personalandhouseholdfinances/incomeandwealth/articles/smallareamodelbasedincomeestimatesenglandandwales/financialyearending2014> latest data

² As defined in the Index of Multiple Deprivation <https://www.gov.uk/government/statistics/english-indices-of-deprivation-2015>

³ In line with ECO2(t) guidance, a qualifying boiler is one that has a seasonal energy efficiency value of < 86%, or has a seasonal energy efficiency value of ≥ 86% and cannot be economically be repaired. https://www.ofgem.gov.uk/system/files/docs/2017/12/energy_company_obligation_2017-18_eco2t_guidance_delivery_v1.1_0.pdf.

⁴ Lewisham's Warm Homes Healthy People project delivers home visits to households at risk of fuel poverty or living in a cold home. The visits offer:

- practical advice on how to stay warm in the home;
- access to the £140 warm homes discount;
- assistance with debt on energy bills;
- advice on switching tariff;
- draught-proofing and other energy saving measures;
- a free winter warming pack (blanket, gloves, mug, thermometer card);
- referrals on to other sources of help.

ii. A household with one or more occupants with the following characteristics reflecting the National Institute for Health and Care Excellence (NICE) 2015 guidance on excess winter deaths and illness caused by cold homes⁵

- Aged over 60, and particularly those over 75
- Children under 5 and pregnant mothers
- Respiratory disease (COPD, asthma)
- Cardiovascular disease (e.g. ischaemic heart disease, cerebrovascular disease)
- Moderate to severe mental illness (e.g. schizophrenia, bipolar disorder)
- Substance misusers
- Dementia
- Neurobiological and related diseases (e.g. fibromyalgia, ME)
- Cancer
- Limited mobility
- Haemoglobinopathies (sickle cell disease, thalassaemia)
- Severe learning disabilities
- Autoimmune and immunodeficiency diseases (e.g. lupus, MS, diabetes, HIV)

c. Solid wall insulation “in-fill” projects

Where potential works have been identified households will be supported to take advantage of “in-fill” projects where the minimum number of vulnerable households is met.

3) Acting on behalf of other local authorities

Lewisham Council will be making declarations of flexible eligibility on behalf of:

Bexley Council

Bromley Council

Croydon Council

Greenwich Council

Merton Council

These boroughs have outlined how they are delegating responsibility for determining flexible eligibility to Lewisham Council in their respective Statements of Intent.

4) Governance

Responsible officer

The primary officer responsible for signing Declarations on behalf of the local authority is:

The project has been running in Lewisham since 2011/12 and has assisted over 2,000 homes in that time. The project is not advertised directly to residents. Instead, referrals are made by front line staff working with at-risk and vulnerable groups across adult social care, health, housing and advice services in public and third sector organisations.

⁵ <https://www.nice.org.uk/guidance/ng6>

Job title: Climate Resilience Manager

Telephone: 020 8314 6605

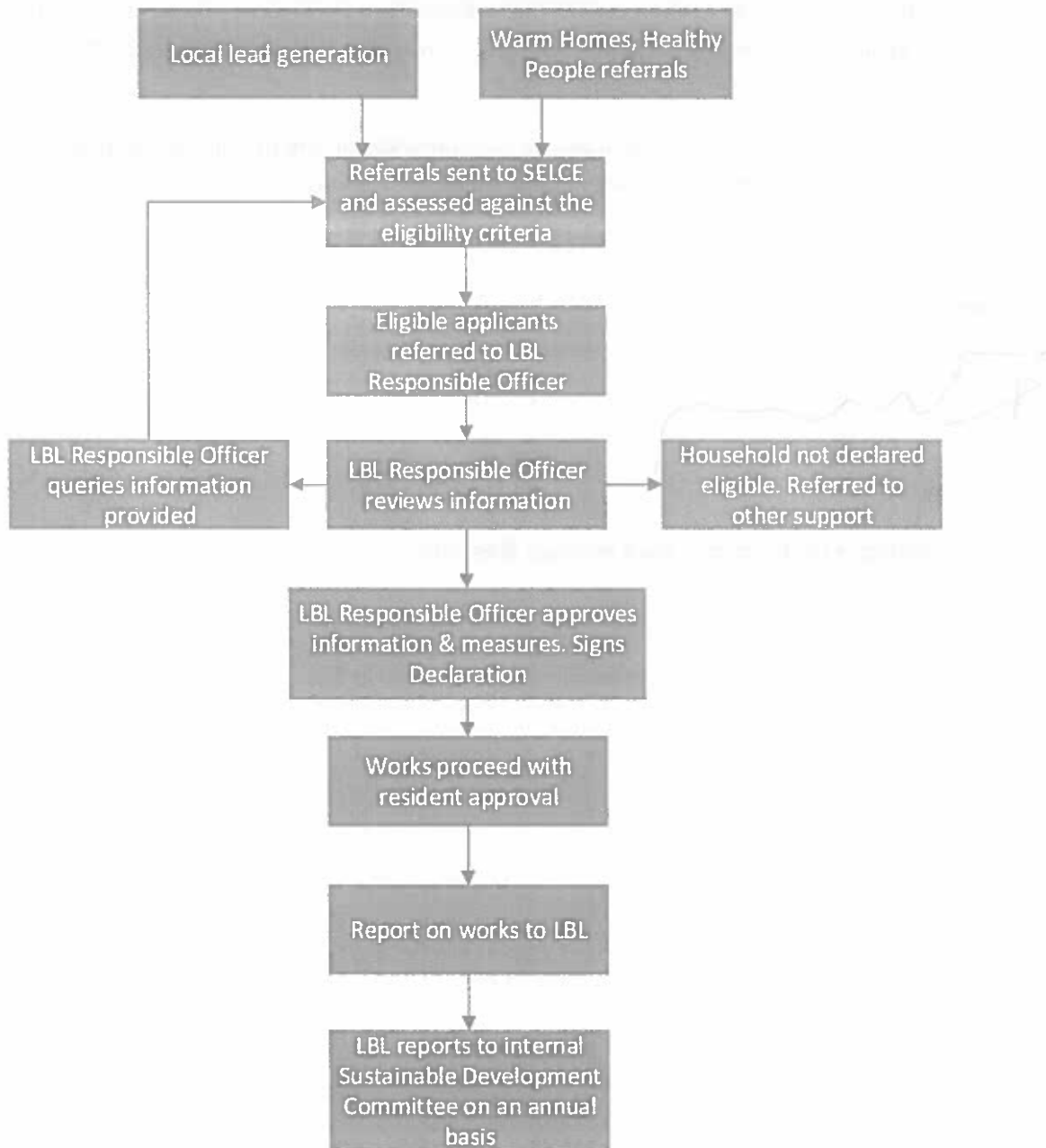
Email: martin.o'brien@lewisham.gov.uk

Should the Climate Resilience Manager be unavailable, the Service Group Manager's within Regeneration and Place will have auxiliary responsibility for signing declarations.

The Council's Sustainable Development Select Committee will review the Council's delivery on 'Help to Heat' flexible eligibility on an annual basis.

5) Referrals and delivery

Lewisham Council has established a partnership with South East London Community Energy⁶ that is intended to create a long-term sustainable local referral route for households eligible for energy company funded measures. This partnership will be the Council's main route for identifying and referring households to 'Help to Heat' obligated parties. Any individual or organisation seeking to use the flexible eligibility arrangements or the Council's endorsement in relation to 'Help to Heat' will be expected to use the partnership arrangements as the referral route, and should in the first instance contact the responsible officer identified above.



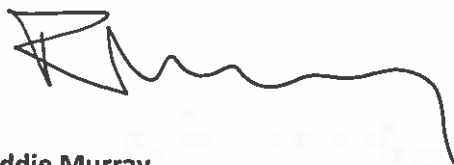
⁶ <http://selce.org.uk/>

6) Evidence, monitoring and reporting

- a. Anonymised data on the characteristics of households reached through flexible eligibility will be reviewed and reported to Lewisham's Sustainable Development Select Committee
- b. A copy of all declarations issued by Lewisham Council will be retained
- c. A record of evidence collected through the partnership with South East London Community Energy for meeting the criteria set out above in section 2abc will be retained
- d. A record of ECO funded measures installed through the partnership with South East London Community Energy will be retained
- e. Lewisham Council will provide a report to BEIS that reflects the reporting requirements suggested in the BEIS guidance on Flexible Eligibility that also covers all of the boroughs Lewisham has delegated responsibility to sign declarations for.

The data above will be retained for the 3 year period recommended in the BEIS guidance, subject to any restrictions required by Lewisham's Information Management Team.

7) Signature



17/04/18

Freddie Murray

Service Group Manager for Property, Asset Strategy & Estates

Lewisham Council