

## Shop local

Help our **high streets**  
fight back after  
a tough year!



- Looking after our parks and green spaces
- Introducing your new Deputy Mayor
- Climate emergency: what have we done so far?

# Could you provide the love and stability a child needs?

## Foster for Lewisham

We are looking for people who have space in their home and the heart to foster a child or young person.

We will offer you a wide range of training and support.

Visit [www.lewisham.gov.uk/foster](http://www.lewisham.gov.uk/foster)

Contact us on freephone 0800 015 0129  
or [fosteringrecruitment@lewisham.gov.uk](mailto:fosteringrecruitment@lewisham.gov.uk)



## Message from the Mayor



Damien Egan,  
Mayor of  
Lewisham

Over the last month or so, as COVID-19 restrictions have been lifted, life has begun to feel a bit more normal. We've been able to see our loved ones, local businesses have opened their doors and we've been able to step away from video calls and get back to doing some of things we enjoy.

However, we know that for some people the true impact of the pandemic is only just beginning to be felt.

Locally, unemployment rates are up, with over 12,500 more residents now out of work. The pandemic laid bare the inequalities in health and wealth that still exist in our

borough; our public services are under increasing demand as the Government continues to under fund them and the survival of the small, independent businesses that play such a key role in our local economy, is on a knife edge.

As well as responding to the immediate challenges, it's important that we seize this opportunity to do things differently and drive forward the changes we want to see in our borough – to shape **Future Lewisham**.

We face huge challenges over the coming 12 months. We will need to continue to be flexible, determined and ambitious, and will need to make some difficult decisions. At the Council's Annual General Meeting on 26 May, I outlined our ambitions for **Future Lewisham** and our priorities for the year ahead. Four core themes run through the heart of our plans for our borough's recovery, and we will be focusing on creating:

- A greener future
- A healthy and well future
- An economically sound future
- A future we all have a part in

For more information about how we plan to do this visit [lewisham.gov.uk/future-lewisham](http://lewisham.gov.uk/future-lewisham) and search #futurelewisham on social media.

As a Council we will do everything in our power to support those who need us most and build on the amazing community spirit and local activism that has made me so proud over the last year. As your Mayor, I will continue to make Lewisham's voice heard nationally, I will make sure that we never lose focus on supporting those who need us most, and I will make sure that the values that make Lewisham such a special place are at the forefront of our recovery.

Damien Egan, Mayor of Lewisham



## In this issue

In this issue of Lewisham Life, you can read about what you can discover on your local high street, learn how our parks and green spaces have provided so much for us this last year, and find out more about our leisure centres reopening.

We speak to our new Deputy Mayor and current Young Mayor, and update you on our commitment to taking action against climate change.

You can also join us in thanking our teachers, schools, nurseries and all staff for their hard work!



**Editor:** Ruth Horsman **Art Editor:** Nancy Yuill **Photography:** Roswitha Cheshier, Darnell Dacres, iStockphoto.com, Jeremy Johns, Jeff Teader **Contributors:** Gill Amas, Phil Baker, Cairin Bohn, Selina Eldridge, Louis High, Rhoda Idoniboye, Amie Moss, Holly Mulhern, Sylvia Thugge. **Editorial:** 020 8314 7027. **Email:** lewishamlife@lewisham.gov.uk **Advertising:** 020 3869 2343. **Issue 133 summer 2021.** Printed by Sterling Solutions. Lewisham Council does not accept responsibility for goods or services offered by advertisers. Please use your recycling bin when you dispose of this magazine.

## Contents

- 5 News
- 10 COVID-19
- 12 Borough of Culture
- 13 Cleaner Lewisham
- 15 Shop safe, shop local
- 24 Parks and green spaces
- 26 Thank you to our schools
- 28 Leisure
- 30 Climate emergency
- 32 Summer events
- 35 Your council

All information was correct at time of going to print. Please check [gov.uk](https://www.gov.uk) for the latest advice on staying safe during the COVID-19 pandemic.

CONTACT

US

**lewisham.gov.uk**  
the home for all your local information

- » Get information about your neighbourhood, what's on and how to get involved
- » Find activities for you and all the family
- » Live in a controlled parking zone? Apply for your permit online
- » Get local news and information direct to your inbox – subscribe at [lewisham.gov.uk/signup](https://lewisham.gov.uk/signup)

If you cannot contact us online,  
you can call 020 8314 6000

### Useful contacts:

#### Lewisham Homes

0800 028 2028  
[lewishamhomes.org.uk](https://lewishamhomes.org.uk)

#### Local health service

[nhs.uk](https://nhs.uk) or NHS 111

#### Police (non-emergency) 101

#### Thames Water

0845 920 0800 (customer services)  
0800 714614 (24-hour leakline)

Gas emergencies 0800 111 999

# Meet Lewisham's new Deputy Mayor

Mayor of Lewisham Damien Egan has appointed Cllr Brenda Dacres as Lewisham's new Deputy Mayor.

Deputy Mayor Dacres has represented New Cross for seven years and is also the borough's Cabinet Member for Safer Communities – a role she will continue alongside her new responsibilities.

"I am inspired by the vibrant diversity of our borough, and I will work hard to support the mayor to bring this passion into the heart of Lewisham Council," she says. "My priority is to make sure that people feel empowered to play a role in their community, that we support those who need us most and that residents know about – and can access – the opportunities available to them."

"My mum and dad came to the UK from the Caribbean in the early 1960s and I am very proud of my heritage as a Black Caribbean Lewisham resident," she says. "My dad was a taxi driver and my mum was an NHS nurse. They taught me strong work ethics, the value of community and how everyone just wants a fair chance to succeed"

"As a hardworking single mum I



know how difficult life can be, and the challenges facing young people. I have raised and educated my child in our borough's schools, and I want every child in Lewisham to grow up in a fair, safe and more equal world."

Mayor of Lewisham Damien Egan said: "I'm delighted to have Brenda as my Deputy Mayor. She's deeply rooted in the community and a

brilliant advocate for our residents. I admire her passion and values of fairness and equality, and I know she will bring so much to this role during what will be a very challenging year ahead."

Cllr Dacres takes over the role from Cllr Chris Best, who remains Cabinet Member for Health and Adult Social Care.

Cllr Kim Powell has been appointed Cabinet Member for Jobs and Skills (job share). She takes over the post from Cllr Joani Reid, who has stepped down from the Cabinet.

## Election results 2021

On 6 May London went to the polls to vote for the Mayor of London and London Assembly.

Sadiq Khan (Lab) was re-elected as Mayor of London. Len Duval

(Lab and Co-op) was re-elected to represent Greenwich and Lewisham on the London Assembly.

New councillors were elected in local by-elections: Bellingham:

Rachel Onikosi (Lab and Co-op); Catford South: James Royston (Lab and Co-op); New Cross: Samantha Latouche (Lab); Sydenham: Jack Lavery (Lab and Co-op).



# Pride month 2021

This year, because of COVID-19, the London Pride march will be taking place in September instead of June. Even though we aren't able to meet in person this June, we encourage you to celebrate with our 'Guide to Pride at home'.

This will include family friendly activities to do at home, interviews with members of Lewisham's LGBT+ community, a special celebration playlist and Pride inspired reading list recommendations. We'll also be delving into the history of Pride.

Read more about the 'Guide to Pride at home' celebrations and other events of LGBT+ interest at [lewisham.gov.uk/events-of-lgbt-interest](https://lewisham.gov.uk/events-of-lgbt-interest)



## Get funding for your community

Community projects that are designed to help Lewisham recover from the COVID-19 pandemic will be able to bid for community infrastructure levy (CIL) funding from May this year.

Lewisham Council will be listening to everyone around the borough on what improvements they would like to see for their area to help it recover, rebuild and adapt following the pandemic. We have budgets of up to £100,000 available for the best ideas.

Back in March 2020, councillors agreed to create a fund of nearly £1 million (£977,094) for community projects, taken from the CIL

generated by new developments in the borough. They agreed this money should be made available for community projects directed towards the recovery from COVID-19, mentoring services for children and young people, tackling crime and anti-social behaviour, and helping people with disabilities and mental health issues find jobs.

Anyone in Lewisham can suggest an idea and we're keen to hear from as many people as possible. Find out more about how Lewisham supports community groups and projects at: [lewisham.gov.uk/mayorandcouncil/funding](https://lewisham.gov.uk/mayorandcouncil/funding)

## Sign up to the Lewisham Life newsletter

You can get up to date information on what's happening across the borough by signing up to our weekly newsletter.

We share regular updates on COVID-19, important news from Council services, training and funding opportunities and wider community news.

If you use social media you can also follow @LewishamCouncil on Twitter, Facebook, Instagram and LinkedIn for regular updates.

Sign up for the newsletter at [lewisham.gov.uk/signup](https://lewisham.gov.uk/signup)



## Inspiring creativity during lockdown

During lockdown, Deptford based group Redstart Arts ran the 'Doorstep Project' in collaboration with the Horniman Museum. Art packs were delivered to doorsteps weekly, which helped the Redstarts continue to make great

art, highlighting the importance of creativity during an isolating time. The Redstarts are a group of talented young adults with learning disabilities.

The final artworks, inspired by animals in the museum's natural

history gallery, are being displayed at the Horniman Museum this summer and will then go onto be part of Deptford X Festival 2021.

Find out more about the project on the Redstart Arts website [redstartarts.com](https://redstartarts.com)



## Trust Choir team up with Rag 'n' Bone Man and P!nk

Our very own Lewisham and Greenwich NHS choir have been hitting the headlines again, this time singing live on the Brits alongside Rag 'n' Bone Man. They performed their latest single Anywhere Away From Here, which also features the singer P!nk (who appeared at the Brits via video link-up).

The choir do their singing and rehearsing in their spare time, all while providing amazing care for the residents of their local boroughs.

The single is available to stream or download from all the usual platforms, and money raised will go to the Lewisham and Greenwich NHS Charity and NHS Charities Together.

You can find out more about the choir at [lewishamandgreenwich.nhs.uk/the-trust-choir](https://lewishamandgreenwich.nhs.uk/the-trust-choir)

## Learn a skill and meet new people

If you want to retrain for a new career, prepare for your next steps in education or develop your hobby, there are a wide variety of courses on offer at our adult learning centres. Everything from cake decorating to clothes making, photography to printmaking and

pilates to yoga.

Online courses are also available in many subjects. Browse the summer term programme at: [lewisham.gov.uk/adultlearning](https://lewisham.gov.uk/adultlearning).

Enrolment for the 2021/22 programme starting in September will commence on Monday 28 June.



## Deadline for Settled Status is 30 June

If you are a European Union (EU) citizen and haven't already, you have until 30 June to apply for Settled Status which will mean your rights to live, work and access public services will be protected now that the UK has left the EU. In Lewisham alone, over 40,000 people have applied.

If you are a UK permanent resident, you must still apply for settled status or citizenship before the deadline. You can find out more about how to get Settled Status at [gov.uk](https://gov.uk)

The immigration status you can apply for will depend on your circumstances and certain requirements. The Home Office also offers advice on immigration arrangements for EU citizens moving to the UK now that the UK has left the EU.

EU residents can also receive independent advice by getting in touch with [citizensadvice.org.uk](https://citizensadvice.org.uk)



Bampton Estate

## Building for Lewisham

Our housing programme is on course to deliver new social homes across Lewisham.

With a housing crisis across London, our Building for Lewisham (BFL) programme will help Lewisham families move out of temporary and emergency housing into new, high-quality homes.

Current projects include: Bampton Estate in Perry Vale, delivering 39 one-bed social flats for people over 55; 20 flats and three houses on the Somerville Estate in Telegraph Hill; a modular housing development of 31 homes opposite Home Park in Bellingham; 117 homes at the

Former Tidemill School in Deptford; the redevelopment of the Mayow Road Warehouse into 32 homes of which six will be supported living for residents with learning disabilities or autism; six homes on Canonbie Road; and the Church Grove, a self-built development of 36 homes.

The BFL programme considers a variety of development opportunities. Sites considered include disused buildings, garage sites, old storage buildings, rooftop spaces, and neighbourhood offices. To view all planned schemes, visit: [lewisham.gov.uk/buildingforlewisham](https://lewisham.gov.uk/buildingforlewisham)

## A new pub for Catford

With the vision for Catford town centre taking shape, the Council is excited to share proposals to improve the station area, and restoration of the former Catford Constitutional Club.

This month, architects will invite the community to see the plans for the former Catford Constitutional Club building, which will be refurbished and reopened as a pub offering a range

of cultural and creative activities. With funding from the Mayor of London, the Council is working with architects to put together a planning application for summer 2021. Learn more about the plans and share your ideas via the website [beyondbroadwaycatford.co.uk](https://beyondbroadwaycatford.co.uk)

Improvements are planned for the area between Catford and Catford Bridge stations. A double-width

pavement will be created along Catford Road between the two stations, the existing underpass under the South Circular Road will be improved and two broad river decks will create a pleasant place for people to pause and meet outside the stations, with planting as well as covered cycle parking.

Find out more at [catfordstations.area.commonplace.is](https://catfordstations.area.commonplace.is)

# Democracy in action

The Lewisham Young Mayor programme gives young people across the borough the opportunity to get involved in democracy and get their voices heard.

Since Lewisham elected its first Young Mayor in 2004, it has become the longest-running programme in the UK and many similar schemes have since been introduced across the country.

We met with the current Young Mayor Femi Komolafe, to find out how it has been these last two years and why he would encourage the young people of Lewisham to enter the campaign this year:

### How have the last two years been for you as Young Mayor of Lewisham?

It has been such an eye opening experience and I've learnt so much. During this time I have been able to represent young people in lots of different ways from working on our local campaigns around SEND (special educational needs and disabilities) inclusion to understanding young people's views around food banks.

### Why did you decide to run for Young Mayor?

I've lived in Lewisham my whole life and I wanted to give back to a community that's had a big impact on who I am. I've always had an interest in helping people and supporting my community. I think it's important no matter your age to be an active citizen, and my faith and family have instilled in me the value of serving others and giving back.



Femi Komolafe

**Stand to be the next Young Mayor of Lewisham**

The Lewisham Young Mayor elections are held in October. To run for young mayor you must:  
Be aged 13–17 years on 20 October 2021 and either:

- Live in the borough of Lewisham
- Go to school or college in the borough of Lewisham.

To find out more visit [lewisham.gov.uk/youngmayor](https://lewisham.gov.uk/youngmayor)

**Closing date:**  
Friday  
17 September  
at 5pm

**Election day:**  
Wednesday  
20 October

### Would you encourage other young people to run? Why?

I would encourage any young person to stand to become Young Mayor because Lewisham can become even better with us helping make that change. It's a great opportunity to learn about campaigning and what it means to be a community leader. I've done a lot of public speaking and chairing

meetings which are helpful skills to gain plus I've met people I would never have otherwise.

### What advice would you give for this year's candidates?

Be yourself! There's no one else like you and what you have to offer can really make a difference. I would also say what is most important is to have fun.

# Building community confidence

The vaccine rollout continues across Lewisham, and our Public Health team have been working with local GP surgeries and the wider community on new and innovative ways to inform and support residents about the COVID-19 vaccination

## Art is everywhere...

...Even in GP surgeries! A mural has been unveiled at the Waldron Health Centre, on Amersham Vale in New Cross, aimed at helping promote confidence in the vaccination.

Lewisham artists Damian Simon and VaneMG created a colourful mural celebrating the roll out of the vaccination and to encourage others to come forward with confidence.

Sharing experiences of the vaccination is an important way of building confidence throughout the community. Patients and staff are thrilled with the colourful 10m x 3m mural and have been taking photos and sharing on social media using the hashtag #WeAreLewisham.

## Pop up clinics

Temporary walk-in vaccine clinics have been popping up across the borough, thanks to an innovative outreach programme between NHS South East London Clinical Commissioning Group, GPs through Primary Care Networks, Public Health team and community leaders.

It's important that residents feel confident and supported – and bringing the vaccination



programme to trusted venues that are easily accessible has been an important step in ensuring hard to reach communities have easy access to the vaccine and all the information they need.

One resident said, "I had been meaning to book for a while. I got forwarded details of the pop up and it prompted me to go ahead. It felt more personal talking to a person rather than putting details into a computer. Added benefit, I could walk here. A very efficient, friendly service. Thank you."

## Webinars

Everyone has questions about the vaccine, and our Public Health team have been working alongside local GPs to help answer those questions. Free online information sessions have been set up with a panel of speakers ready to answer any question from the local community.

These have been very popular and more are planned – keep an eye out or sign up to our e-newsletters at [lewisham.gov.uk/signup](http://lewisham.gov.uk/signup) for details.

## We asked Dr Mbema your questions about the COVID-19 vaccination

Earlier in the year, we asked residents whether they'd have the vaccination when it's their turn and found a number of questions were coming up, especially among those under 30 years old.

We've put some of these questions to Dr Catherine Mbema, Director of Public Health for Lewisham, to hear the facts.

### What are the short term side effects?

You've probably heard friends or members of your family talking about side effects. This is to be expected – like all medicines, vaccines can cause side effects. Not everyone gets them and most side effects are mild and usually don't last more than a few days. We've heard reports of a sore arm, feeling tired, maybe a mild headache or generally feeling achy or sick. You can take painkillers, such as paracetamol, if you need to.

It is very rare for anyone to have a serious reaction to the vaccine. If this does happen, it is usually within minutes of receiving the vaccine when you will still be in the hands of trained medical professionals. If you have had a serious allergic reaction, tell staff before your vaccination.

More information can be found at [nhsselondonvaccinefacts.com](http://nhsselondonvaccinefacts.com)

### Does the vaccination affect fertility?

There is no need to avoid pregnancy



“It is very rare for anyone to have a serious reaction to the vaccine”

Dr Catherine Mbema,  
Director of Public Health  
for Lewisham

after having the COVID-19 vaccination. There is no evidence that the COVID-19 vaccines have any effect on fertility or your chances of becoming pregnant.

### I'm pregnant/breastfeeding – should I wait to have the vaccination?

The advice is now that pregnant women should have the vaccination when it is their turn according to their age or risk group. In the USA, around 90,000 pregnant women have been vaccinated and no safety concerns have been identified.

You can still have the vaccination whilst breastfeeding. In line with recommendations from the World Health Organisation, the COVID-19 vaccination is not thought to be a risk to infants who are breastfed.

### Is AstraZeneca safe for me?

For people under 40 without other health conditions, the current advice is to have another vaccine instead of AstraZeneca.

You might have read reports linking the COVID-19 vaccination to blood clots. This is seen slightly more often in younger people and when it does occur, it tends to be between four days to two weeks after the vaccination. Blood clots can occur naturally – clotting problems are a common complication of having COVID-19 itself.

It's important to remember that blood clots are extremely rare, and on balance, the benefits of getting the vaccination far outweigh any risks.

Visit [gov.uk/coronavirus](http://gov.uk/coronavirus) for the most up to date information.





### Hear the latest news

Sign up for the Lewisham Borough of Culture newsletter at [iamlewisham.uk](http://iamlewisham.uk) to be the first to hear the latest news, ideas and opportunities as we get ready for 2022. If you use social media, you can also connect with @IAmLewisham on Twitter, Facebook or Instagram.

# The culture club

## Meet our new Borough of Culture partners

Lewisham is preparing to be London Borough of Culture 2022 – an exciting, year-long celebration of our diverse neighbourhoods, communities and stories. To help make it all happen, two new delivery partners have now been appointed. Arts education champions Lewisham Education Arts Network (LEAN) will connect with schools as Education Partner, empowering our young people and their teachers to get involved. Local charity Lewisham Local have come on board as Volunteering Partner and will be coordinating a range of different opportunities for residents to get involved and give back to their neighbourhood.



### Calling local history buffs

Have an idea for a project to celebrate a part of Lewisham's rich post-war history? You could receive a grant of £7,500, plus training and support to bring it to life as part of Lewisham Borough of Culture 2022. Successful

proposals from local residents and community organisations will be supported by Goldsmiths, University of London, and involve working with diverse communities to tell their own stories. The deadline to apply is 18 June 2021.

To find out more and to read about other opportunities, visit [iamlewisham.uk/apply](http://iamlewisham.uk/apply)

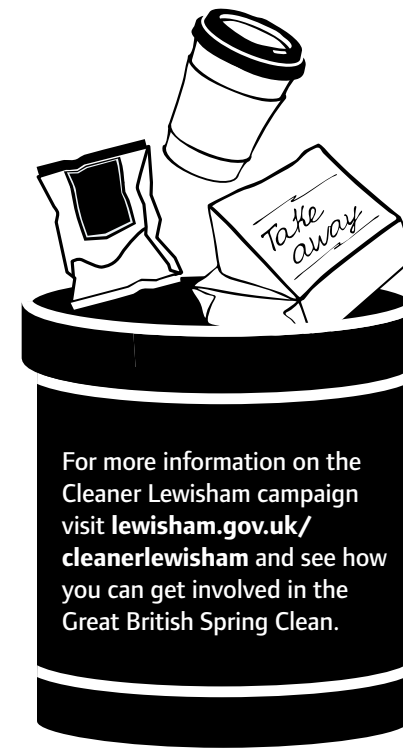
# Cleaning up

We are launching a new campaign aimed at making the borough cleaner and tidier, together with the help of residents and businesses

**WORKING TOGETHER FOR A CLEANER LEWISHAM**

The Cleaner Lewisham campaign, launched this spring, will bring the borough together and take pride in our environment. We are aiming to reduce the amount of waste on our streets, which currently totals over 9,500 tonnes a year. To kick-start this campaign, we have signed up to the Great British Spring Clean – and would like residents to get involved. The Great British Spring Clean is a national campaign by Keep Britain Tidy, bringing communities together across the country to help clean the litter that blights our beauty spots, waterways, parks and streets. Why not speak with your neighbours, friends and family and get everyone involved? We are working to raise awareness of the services we provide, to encourage more residents to use them. We also want to:

- Support residents to reduce the amount of waste they produce, with regular events throughout the borough
- Encourage more reporting of fly tipping and littering



- Promote the council's collection service for large items and increase enforcement action on those who disrespect the borough

- Continue to keep our parks and green spaces clean and healthy by working with residents and community groups

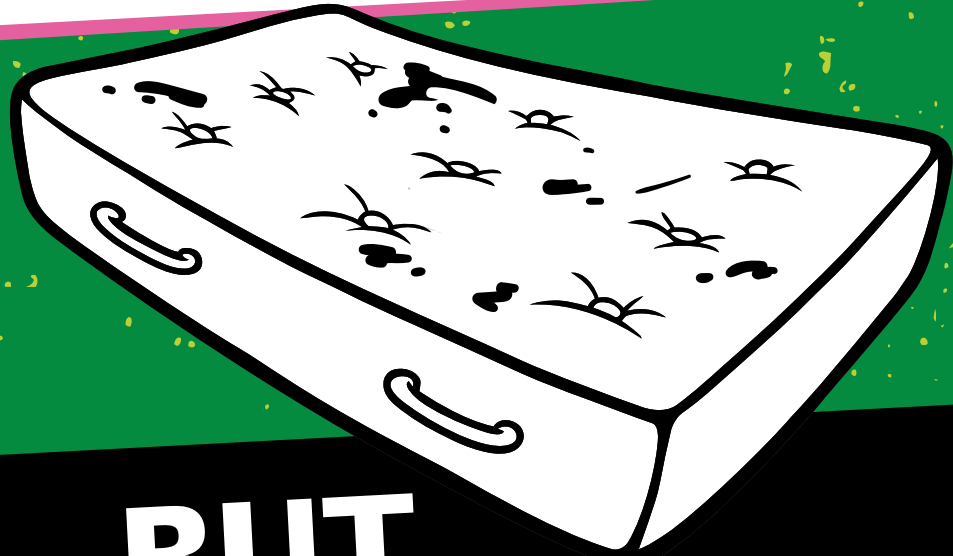
- Continue to promote reuse and recycling through different events and outreach programmes.

Councillor Sophie McGeevor, Cabinet Member for Environment and Transport, said:

"Like most people living in Lewisham we are proud to live here and we have listened to our residents. We are determined to reduce litter on our streets, and we provide a service to remove large home items cheaply – or even free of charge in the case of mattresses. We will also take action against those people who continue to flout the law and selfishly dump rubbish.

"We really want residents to work with us, to change people's behaviour by using our service, reporting fly-tipping, thinking twice before discarding rubbish on the street and volunteering to help clean up some of the areas in our borough that could do with some tender loving care."

**We can collect  
your large items,  
for a small fee...**



**...BUT  
MATTRESSES  
GO FREE**

**#CleanerLewisham**



Business: Shop Safe, Shop Local

**pull out  
and keep**

# Show your high street **Some love**

**Lockdown showed us how important  
it is to be able to access shops and services  
within walking distance of home**

Lewisham's fantastic independent businesses are at the very heart of our communities. But they have been hit hard this last year. While many have been able to adapt in order to keep serving locals, others have sadly been forced to close their doors completely.

As restrictions gradually lift, it is more important than ever that we support our local businesses so our high streets have the best possible chance of bouncing back. More of the money that is spent in Lewisham, stays in Lewisham, helping to boost our economy and safeguard jobs.

Over the next few pages, we are highlighting a small selection of the many independent businesses right here on our doorstep in Lewisham – some have been here for generations, while others have opened very recently.



We are lucky to have thousands of brilliant businesses in the borough. It would be impossible to feature them all here. Please sign up to our mailing list as we regularly feature businesses on our blog, and we will continue to celebrate our businesses in future issues [lewisham.gov.uk/business](https://www.lewisham.gov.uk/business)



# Salons

Support local salons as they welcome you back for a trim, pampering session or complete makeover



**LoveLe nails is a small family run nail salon on Brockley Rise, Forest Hill. They specialise in classic and gel manicures and pedicures.**

"We've been closed for around eight out of the last twelve months so it's been tough. Even when we were allowed to open, there was so much uncertainty. We'd book a client in for an appointment one day, only to have to cancel the next. Sadly all this meant having to lose two valuable members of staff.

"Delivering a safe service is the most important thing for us, as beauty industry professionals. Each staff member has completed the BARBICIDE COVID-19 Certification Course. This shows how committed we are to keeping everyone safe.

"We have put several measures in place to protect ourselves and clients. Everybody has to wear a

mask in the salon, there are shields up between work stations and hand sanitiser is freely available. Everything is sterilised before and after each appointment. We also take less clients to ensure everybody can be safely social distanced.

"Thankfully Lewisham Council has been amazing. We are a small family business. Without their help and support, we would not have been able to survive all the closures while still having to pay overheads. It has been tough and challenging but the financial support has made all the difference. It's made our future possible.

"We are so grateful to be open again. There's positivity in the air and we're feeling optimistic about the year ahead. We've been open for almost eight years now and are extremely lucky to have lots of loyal clients that have supported us throughout. It's been fantastic

## See also...

**Gossip Hair and Beauty**  
126 Burnt Ash Road,  
Lee SE12 8PU  
[gossiphairbeauty.com](http://gossiphairbeauty.com)

**Blackheath Hair & Co**  
26 Montpelier Vale  
SE3 0TA  
[blackheathhair.co.uk](http://blackheathhair.co.uk)

**Nails Extreme**  
441 Bromley Road,  
Downham BR1 4PH  
020 8285 1180

**Sydenham Grooming Salon**  
(dog and cat)  
80 Sydenham Road, SE26 5JX  
[sydenhamgrooming.co.uk](http://sydenhamgrooming.co.uk)

**Tomboyz Hairdressers**  
3 Harefield Road, Brockley  
SE4 1LW  
020 8691 3022

**Henry's Hairstylists**  
2a Amersham Vale,  
New Cross SE14 6LD  
[henryshairstylists.london](http://henryshairstylists.london)

to see so many of them since we've reopened. We're looking forward to seeing more soon."

**LoveLe Nails**  
39 Brockley Rise, SE23 1JG  
[lovele.me](http://lovele.me)

# Nightlife

With theatre, live music and comedy being virtually non-existent since March, the nights have certainly been quieter. Time to dress up and be entertained!



**Nikki Spencer founded Haven't Stopped Dancing Yet! in 2010, to create a fun and welcoming club night for people of all ages. The events feature DJs playing a mix of 70s & 80s soul, funk and disco in venues across the borough.**

"At the start of 2020 we were looking forward to our busiest year ever for Haven't Stopped Dancing Yet with 70s & 80s disco nights planned across London and beyond. When lockdown happened, everything stopped overnight. And given the lack of government support for small limited companies like ours, it was hard to stay positive.

"It took a few weeks but we soon realised that people needed the feelgood vibes of Haven't Stopped Dancing Yet more than ever. Dancing is so beneficial, both physically and mentally. So we

started hosting virtual disco parties and work events on Zoom to liven up life in lockdown.

"It has been quite emotional enabling people to celebrate special occasions with friends and family, even if they can't physically be together. Someone recently said a party had made them "feel so good it should be on the NHS". We are still taking virtual bookings but we are looking forward to dancing together in real life.

"If things go to plan, we'll be at Beckenham Place Mansion on 17 September, at Blackheath Halls on 4 December and we are talking to The Fellowship and Star in Bellingham about dates too. We can't wait to see everyone face to face again. Our regulars have messaged us, to say the same.

"It's been difficult financially as I run the business from home and we haven't previously been entitled to any support. However, the Council

## See also...

**The Poodle Club**  
Comedy club in Sydenham  
[poodleclub.co.uk](http://poodleclub.co.uk)

**Fox & Firkin**  
Live music venue in Ladywell  
with large outdoor area  
[foxfirkin.com](http://foxfirkin.com)

**Amersham Arms**  
Live music/club venue  
in New Cross  
[theamershamarms.net](http://theamershamarms.net)

**Birds Nest Deptford**  
Music and arts venue in  
Deptford  
[thebirdsnestpub.co.uk](http://thebirdsnestpub.co.uk)

**Catford Mews**  
Cinema with bar and street  
food vendors  
[catford-mews.co.uk](http://catford-mews.co.uk)

**The Albany**  
Theatre and arts venue  
in Deptford  
[thealbany.org.uk](http://thealbany.org.uk)

has been very helpful and have just told us we are eligible for Lewisham's Additional Restrictions Grant. This is a huge relief as it will mean we can cover some of the costs involved in getting back out there, dancing and putting smiles on people's faces."

**haven'tstoppeddancingyet.co.uk**

# Non-essential retail

These are the places we love to hit the high street for, to browse for gifts or a little treat for ourselves



Raymond Gordon is the owner of Sunflower Florists in Catford, where he has been serving the local community for the last 14 years. Raymond is passionate about floristry and featured in the Netflix series 'The Big Flower Fight' in 2020.

"This last year has been very challenging for me, both as a business and emotionally. Because of the nature of my business, I have been busy taking orders for funerals and it has been so sad to hear some of my customers' stories.

"We have been unable to open our doors much this last year as we are classed as 'non-essential' retail, but we have an online ordering service and people could still place orders over the phone. The problem with this is that flowers being what they are, sometimes customers wouldn't get exactly what was in the photo, so there would be a lot of back and forth making sure everyone was happy

and knew what they were getting.

"My business serves the local community here in Catford. Because I have been here for so long, I have provided flowers for the same families having christenings, birthdays, anniversaries, weddings and funerals. Lots of my customers prefer to come into the shop and have a chat while choosing their flowers, and it has been lovely to see those familiar faces again. The community around here have been supportive with all the new COVID-19 restrictions, and customers makes sure they sanitise their hands and wear their masks.

It definitely feels like there might be opportunity for more weddings and celebrations this summer, which makes me happy, for business of course, but also for the happiness these occasions bring!

**Sunflower Florist**  
233 Bromley Road SE6 2PG  
020 8698 8607  
sunflorist.co.uk

## See also...

**Musicland**  
Independent music shop selling instruments, tech and offering lessons in Downham. 422 Bromley Road, BR1 4PL  
musicland.co.uk

**Park Fever**  
Craft beer, wine and chocolate shop  
21a Staplehurst Road, SE13 5ND  
parkfever.co.uk

**Wild Horses**  
Furniture and lifestyle shop selling vintage and new in Forest Hill  
95 Dartmouth Road, London SE23 3HT  
@wildhorses\_shop on Instagram

**Kirkdale Bookshop**  
New and secondhand books in Sydenham  
272 Kirkdale, SE26 4RS  
kirkdalebookshop.com

**The Find Store**  
Homeware and lifestyle shop in Lee  
133 Burnt Ash Road, SE12 8RA  
thefindstore.co.uk

**Cigarette records**  
Second hand vinyl  
Catford Mews,  
32 Winslade Way, SE6 4JU  
cigaretterecords.co.uk

# Food and drink

This is just a tiny selection of the hundreds of incredible places to eat and drink in Lewisham!



Jerk Off BBQ, run by Daniel and Heleena, is a restaurant, bar and takeaway based in Deptford specialising in Caribbean Street Food.

"Business has been the most unpredictable it's ever been this year, with many highs and lows. We've had waves of extra business and then great lows with minimal to no business with restrictions and closures.

"We adapted during the pandemic to provide nutritious, affordable meals to people's homes. We have made our menu available via our website and customers can order in advance for the meals to be delivered on the weekend. We delivered meals around Lewisham and South East London - we had always planned to do deliveries, so in a way this was the push that we needed to get this going.

"At our site in Deptford, we have socially distanced outdoor seating

with lots of space and fresh air. We have a 5 star hygiene rating so it wasn't much of a change from how we usually work, but the yard complies with all COVID-19 health and safety regulations, with hand sanitiser, and table cleaning after every customer.

"The Council has been very supportive, providing COVID updates which we regularly use to support all the changes. There has been access to loans and grants for many small Lewisham independent businesses which is essential for the current climate.

"We are feeling positive and optimistic about the future! We have lots of ideas, projects and expansion plans in motion and as a Black and women-led Lewisham business, reopening for summer is like a blank canvas for us to showcase Lewisham's diversity and community - especially here in Deptford.

"We love showcasing the Caribbean culture and history

## See also...

**Meze Mangal**  
Traditional Turkish Grill in Brockley  
245 Lewisham Way, London SE4 1XF  
020 8694 8099

**Le Querce**  
Sardinian restaurant and deli in Honor Oak Park  
68 Brockley Rise, SE23 1LN  
lequercedaily.com

**Ignition Brewery**  
Brewery and community taproom in Sydenham  
44a Sydenham Road, SE26 5QF  
ignition.beer

**Le Delice**  
Traditional French patisserie and café in Ladywell  
38 Ladywell Road, SE13 7UZ  
020 8690 3238

**The Perry Hill**  
Recently reopened pub with enormous garden in Catford  
78-80 Perry Hill, SE6 4EY  
perryhillpub.co.uk

**Drink at Bob's**  
Pint-sized pub/cocktail bar in Hither Green  
214 Hither Green Lane, London SE13 6RT  
drinkat.co.uk

through food and fun, so the connection to our customers and being able to have a chat and have fun again out in the open is what it's all about for us!"

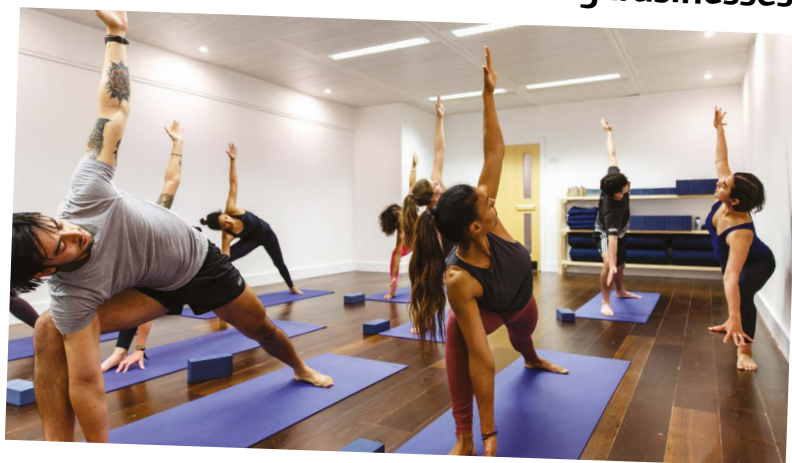
**Jerk Off BBQ,**  
3 Creekside, Deptford SE8 4SA  
jerkoffbbq.com





# Sports and wellbeing

Whether you need help with an injury, looking to restart your exercise regime or interested in trying something new, there are many independent sports and wellbeing businesses across the borough



**Dragonfly Yoga is a yoga studio in Sydenham, set up as a community initiative and fundraising activity for sister charity Gmax – after running costs, 100% of the profits are driven back into the charity. The Gmax academy helps young people, often from disadvantaged backgrounds, to train with professional coaches with many young athletes competing at a national level.**

“Like many other industries we have been hit hard. Our income comes from memberships and bookings for our classes, and purchases at our café and shop, all of which we were unable to run.

“As well as this affecting our business, it has not been pleasant knowing that our members were suffering due to a lack of physical activity and inadequate wellbeing provision due to the lockdowns.

“Operating online was the only

choice we had which has not been ideal for either customers or teachers, as the essence of Yoga revolves around spiritual energy which cannot be replicated through a screen.

“We are delighted to be able to welcome our customers back and have followed all government guidelines to ensure a safe and worry-free opening for all.

“We have received grants from Lewisham Council, and also some invaluable advice updating us on various opportunities to support us.

“Based on the daily enquires from customers, it is clear health and wellness will be more important than ever before. We provide an opportunity for all to improve their physical and mental health, so we hope the reality in customers returning is in line with our optimism about a rapid recovery once public health is no longer a top concern.”

## See also...

**Back on Track Physiotherapy**  
64 Nelgarde Road, SE6 4TF  
backontrackphysio.wordpress.com

**Commando Temple Gym**  
Deptford  
Units 14, 15, 16  
Resolution Way, SE8 4NT  
beststronger.co.uk

**Studio One Pilates**  
Forest Hill  
58-72 Dalmain Road,  
SE23 1AT  
studioone-pilates.com

**Blackheath Osteopathy and Acupuncture**  
1 Lawn Terrace, SE3 9LJ  
boaa.co.uk

**Anytime Fitness**  
342 a/b Baring Road,  
Grove Park, SE12 0DU  
anytimefitness.co.uk

**Fitness For Mummies**  
Personal Training & Fitness  
classes in Forest Hill / Brockley  
fitnessformummies.co.uk

**Dragonfly Yoga,**  
22a, 24 Sydenham Road,  
SE26 5QW  
dragonfly-yoga.org



# New businesses

We are proud to support new businesses opening up in such a challenging time. Show these newcomers some love!



**Wanderlust Eatery is a brand new café on Verdant Lane, SE6. We spoke to owner Alexander Yepremian about his journey getting open and ready to welcome guests.**

“I am originally from New York City, and I was working as a cruise director when the pandemic hit.

“Lockdown happened, and we were told there would be a two week break from cruises – this turned into over a year. This gave me a really good opportunity to look at my future and work out if I wanted to go back to the cruise industry or try something new. Wanderlust Eatery fuses my love of travel with international cuisine. Although we love our location, we want you to feel like you’ve stepped out of South East London when you walk through our doors, and ready to be taken on a journey by our crew.

“Every menu item is named

after a city around the world, and we specialise in Wafflewiches – semi sweet waffles with sweet or savoury fillings.

“The local community in Hither Green have responded really well to us – we did lots of delivery and take away during the lockdowns, and our guests are excited to be able to finally eat their favourite Wanderlust Eatery dishes now on plates instead of takeout boxes!

“Our lovely outdoor first-class lounge has been open for guests since April and we have just got a license to serve bottomless brunches which is exciting for the summer months ahead.

“Opening in the middle of the pandemic has meant we have always been aware of all the necessary regulations to keep COVID-secure, so our customers can feel assured we will look after them safely while they are here with us. It definitely feels like there



## See also...

**Marvellous Greens & Beans**  
Family-run community greengrocer in Honor Oak Park.  
72 Brockley Rise SE23 1LN  
marvellousgreensandbeans.com

**THB Caribbean Food Centre**  
Speciality food centre – butcher, fishmonger, cake and coffee shop  
94 Rushey Green, SE6 4HW  
020 3874 6684

**The Village**  
Parent Support Hub open every Wednesday  
The Corbett Community Centre, Torridon Road, SE6 1RQ  
thevillagelondon.co.uk  
07955 422557

**Tanuki Gaming**  
board games shop and library, bar and café in Deptford  
145 Deptford High Street, SE8 3NU  
tanukigaming.com

**Icy Cakes**  
Cupcakes, cakes, milkshakes and other sweet treats in Sydenham  
109 Kirkdale, SE26 4QJ  
07903 045542

is some positivity in the air as the area opens up again for the summer!”

**88 Verdant Lane, SE6 1LF**  
wanderlusteatery.co.uk

# Supporting our businesses

The battle against coronavirus may be turning a corner but we know that conditions remain tough. Lewisham has one of the highest numbers of small, independently owned businesses in the UK. We are proud of that and want to do everything we can to support their safe reopening but also to ensure they flourish in the coming months and years.

Since the start of the pandemic, we have provided over £65m of grant funding to local businesses to help navigate the restrictions. Now as we look to the future, we are offering further support such as the Restart and Inclusive Growth Builder grant, to help them recover and innovate.

## Restart Grants

This scheme is to support the recovery of the high street and replaces the Local Restrictions Support Grants [lewisham.gov.uk/restartgrant](https://www.lewisham.gov.uk/restartgrant)

For information on all other grants and to find out what financial support is available, we'd recommend signing up to our business newsletter: [lewisham.gov.uk/businesssupport](https://www.lewisham.gov.uk/businesssupport) or you can email our Economy Jobs and Partnerships team on [Economyandpartnerships@lewisham.gov.uk](mailto:Economyandpartnerships@lewisham.gov.uk)

We have over 11,500 businesses in Lewisham, and strongly encourage all our residents to research their local area and beyond to find out what is available – you might be surprised what is around the corner!  
[lewisham.gov.uk/businessdirectory](https://www.lewisham.gov.uk/businessdirectory)



The experts in bespoke joinery  
Handcrafted by us, perfection for you



Showrooms in Brockley  
and Sydenham



- Windows
- Doors
- Plantation shutters
- and much more!

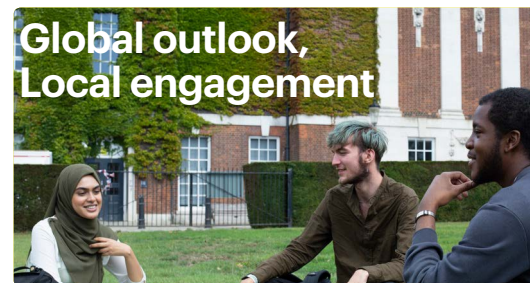


020 7924 7303

[info@sashwindows.london](mailto:info@sashwindows.london)



## Global outlook, Local engagement



### Anthropology at Goldsmiths

Study for an undergraduate or postgraduate degree at our friendly campus in New Cross

If you don't have A-levels, or have been out of education for a while, we have an Integrated Degree with a Foundation Year.

We also offer a Masters in Applied Anthropology with pathways in Community and Youth Work, Community Development, and Community Arts for those who have a degree, experience of community or youth work, and who want to become professionally qualified.

Find out more about these and the rest of our degrees at [www.gold.ac.uk/anthropology](https://www.gold.ac.uk/anthropology) or email Dr Gavin Weston: [g.weston@gold.ac.uk](mailto:g.weston@gold.ac.uk)

Goldsmiths  
UNIVERSITY OF LONDON

## LEWISHAM JUST GOT BETTER

NOW OPEN

Welcome to Lewisham's new leisure provider, with online bookings now available for gym, fitness classes and swimming at

- Glass Mill Leisure Centre
- Wavelengths Leisure Centre
- Forest Hill Pools

Book via the Better UK App or visit [better.org.uk](https://better.org.uk)



Better is a registered trademark and trading name of GLL (Greenwich Leisure Limited), a charitable social enterprise and registered society under the Co-operative & Community Benefit & Societies Act 2014 registration no. 27793R. Registered office: Middlegate House, The Royal Arsenal, London, SE18 6SX. Inland Revenue Charity no. X843398.



BETTER



# Park life

Shortly before the pandemic, we set out a vision for our parks and open spaces to become ‘the heart and lungs of Lewisham’. Little did we know just how essential they would soon prove to be.

Our parks and green spaces have been a real lifeline over the past year. They’ve provided natural settings that have helped soothe stresses and anxieties. They’ve given us space to exercise at a safe distance from others, and offered opportunity for a chat when meeting indoors hasn’t been possible.

For many of us, just being out in our local park and able to see or hear others has reminded us that we are connected within a wide, diverse community.

Our own personal appreciation of our parks and green spaces may have increased recently, but there’s been a flurry of official recognition too. In the last year, achievements have included:

- Gaining second place in the Good Parks for London Report 2020 – up one place from 2019. [parksforlondon.org.uk/resource/good-parks-for-london](https://parksforlondon.org.uk/resource/good-parks-for-london)
- Receiving 17 Green Flag Park awards – including a new award in 2020 for Beckenham Place Park – and three Green Flag Community Awards
- Grove Park Nature Reserve formally designated as a ‘Local Nature Reserve’



Beckenham Place Park

- Planting 260 trees on streets and alongside highways in partnership with Lewisham charity Street Trees for Living, who received the Woodland Trust’s London Tree and Woodland Award 2020.

## Everyone is welcome

Deptford resident Aruna Vieira has been working in Lewisham’s parks for 17 years. Now Junior Manager for Parks Services at Glendale, the Council’s parks maintenance contractor, Aruna explained why he’s so happy in his work.

“I really like open spaces and I

chose this as the area in which I would like to make a difference. I wanted to help people enjoy their parks.

“A park is a connection with the community. You have opportunities to meet others from different cultures and backgrounds, and enjoy the same space together. Everyone is welcome.”

Aruna has seen a surge in park use since the emergence of COVID-19 – and believes visitors understand the impact of parks staff far better now as a result.

“Before the pandemic, people would come to parks at weekends



“I hope my input has helped contribute to positive changes in the park”

Alona

and probably not really think about how they were maintained. But with people working from home or being furloughed, numbers have really increased on weekdays. I have never seen it like this.

“People have been coming every day and they see the contribution we make. It makes me very proud to be helping to make a difference.”

But the parks’ growth in popularity has brought an increase in litter. “Demand for removing litter has become very intense,” he said. “I would ask people to help look after the parks by recycling and taking their litter home.”

Aruna praised the efforts of an increasing number of volunteers who help to look after their local park or green space. One of those volunteers is Alona Sheridan, who lives a short walk from Mayow Park and started volunteering there in 1993 when Mayow Park Users’ group – renamed five years later as the Friends of Mayow Park – was formed.

## Care for your park

“I knew the importance of community groups working together to campaign for and improve their local area,” said Alona. “My interests are wildlife, ancient trees, climate change mitigation, food growing and the value of open spaces, so I wanted to work with others for a safe green space for children, adults and wildlife to use. It’s important to engage young children with nature in the park.”

The Friends of Mayow Park (FOMP) work closely with the

Council and Glendale. Before the pandemic, they held regular events – including bat walks and tree dressing – and carried out a range of activities, from surveys with park users when important changes were proposed, to gardening work such as managing the orchard, herb bed and fruit bushes.

“As a volunteer I hope my input has helped contribute to positive changes in the park. The pandemic has highlighted the value of green spaces for physical and mental wellbeing. Parks have helped provide structure to our days.

“Being among trees and wildlife rather than the confines of our homes, people have really appreciated their local outdoor amenities. Less traffic noise and reduced air pollution made parks into green lungs.

“Many of us already knew the value of parks; the pandemic proved it! But let’s not take parks for granted.”

She urged park users to show they care for their park, its wildlife and other visitors. “Enjoy your picnics but please take your rubbish home with you. Carefully dispose of wet-wipes as they don’t decompose in soil. Help us to love our parks.”

“I would ask people to help look after the parks by recycling and taking their litter home”

Aruna



# Top of the class!

As we reach the end of another extraordinary school year, we want to say a huge **THANK YOU** to our schools and nurseries, teachers and support staff

**Y**our commitment to the children and young people of Lewisham has been phenomenal, and you continued to work hard in delivering teaching and learning to both those at home and those children who had to attend school during lockdown.

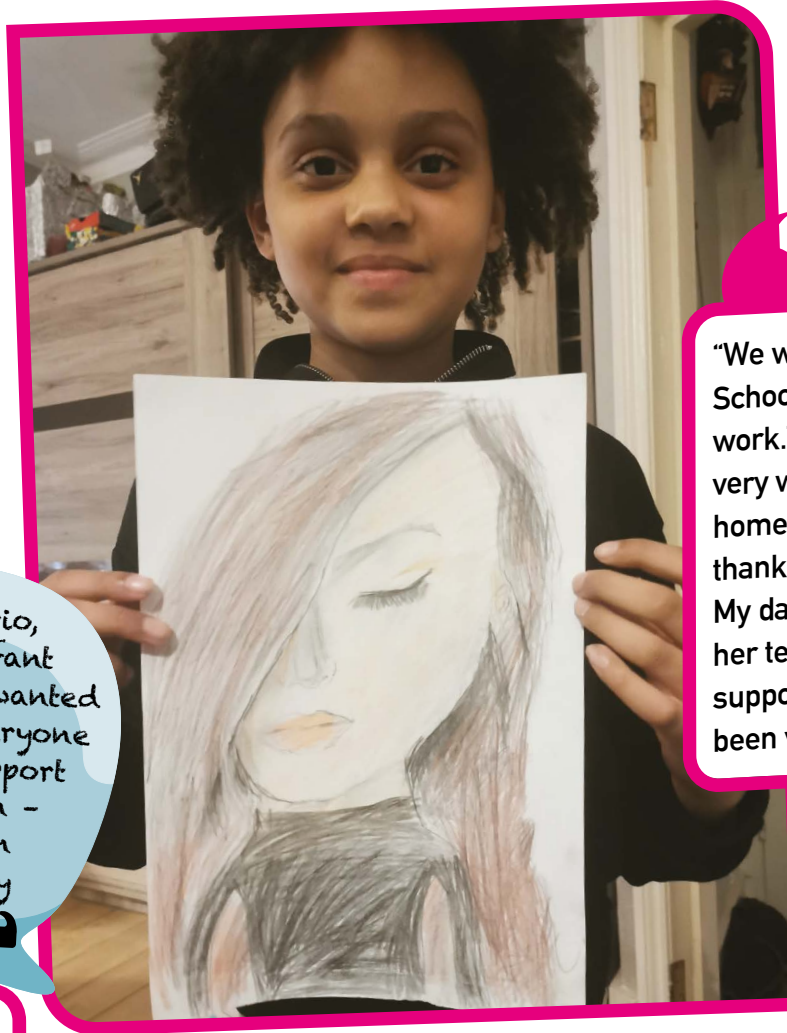
We asked parents, carers and children across the borough to send us a 'thank you', a selection are on these pages. We will be sharing the rest on National Thank a Teacher Day which is Wednesday 16 June, on our social media channels.

“Thank you to the teachers who stood in the cold car park to allow us to swap reading books”

“My name is Romario, I attend Stillness Infant School. My mum and I wanted to say thank you to everyone at school for their support throughout lockdown - Miss Jones in Green Class you are a very good teacher!”

“I'd like to thank everyone at Burnt Ash pre-school who have worked so tirelessly throughout the pandemic to accommodate toddlers with complex and high levels of needs. Attending everyday without being able to wear masks and being there for all the nursery children that truly needed to go to nursery for the social skills with their peers.”

“Thank you for the zoom discos organised for the children to see each other and dance”



“Thank you for the emails from the school informing us parents that it was ok if we couldn't complete everything that was set”

“We would like to praise Holy Cross Catholic School in Lewisham for such amazing work. The teachers and the staff has been very well organised. In this lockdown homeschooling was much much easier thanks to school effort. My daughter Gabriella drew a picture of her teacher Ms Knight who has been very supportive and well prepared. She has also been very patient.”



Sataka Kondo Year 5, Dalmain Primary sSchool



National Thank a Teacher Day is an annual celebration of teachers, schools and support staff across the UK, this year on Wednesday 23 June. You can follow all the action on the day over on Twitter at @UKThankATeacher or visit the website [thankateacher.co.uk](http://thankateacher.co.uk) for more info and to send a free personalised e-card.



Kayano Kondo, Year 4, Dalmain Primary School



“I'd like to thank everyone at Coopers Lane School who were attending everyday including during most of the school holidays too. As well as facilitating the many pupils who have been attending school, they've also delivered high-quality virtual learning for those who had to stay at home. I'd like to also give double thanks to Mr James Mole of Coopers Lane School who every Friday cheered up the children by putting on a zoom Radio show.”



# GETTING ACTIVE

Find out what's on and what's happening with our leisure centres across the borough

**L**eisure centres were sorely missed during the months of lockdown. Although many of us took to our parks and green spaces for daily exercise, it's been clear how important our leisure centres are to the health and wellbeing of our residents and how welcome the reopening has been.

Work has been going on behind the scenes during the closures, and millions of pounds has been invested in the past year to improve facilities and ensure they are clean, safe and comfortable to use.

## Wavelengths update

We are working with Better to extensively upgrade Wavelengths Leisure Centre. There has already been an investment of £300,000 – which includes fully retiling the 25m pool to guarantee its life for the next 20 years. Shower and changing facilities have also been improved for the pool, which will reopen in the summer.

The other pool, the leisure pool, needs extensive investment and refurbishment to make it fit for use, costing £700,000. This would be a huge cost, and it is important we speak to the people who use the pool and the wider community to make sure we are funding facilities that will be well used and meet residents' needs. No decisions about the leisure pool will be made until residents have been consulted about options.

To find out more see [lewisham.gov.uk/wavelengths](http://lewisham.gov.uk/wavelengths)

Our new partnership with Greenwich Leisure Limited – also known as Better – meant that on 12 April we were able to open Forest Hill Pools, Glass Mill Leisure Centre and Wavelengths Leisure Centre gym. On the same day, through our ongoing partnership with 1Life, we were able to open Downham Health and Leisure Centre.

## Upgrades and investment

We spoke to Cllr André Bourne, Cabinet member responsible for leisure centres to find out more about the improvements being made and what the latest plans are:

“While our leisure centres were closed, we were busy improving them. We've invested heavily in

things like decoration and deep cleaning, as well as upgrading the entrances and communal areas at Glass Mill and Wavelengths; plus some work behind the scenes that you won't necessarily see but will help to keep things running better, including a new access control system at Glass Mill, and new air cooling systems across the centres.

“Feedback from residents returning to them has been overwhelmingly positive. They have particularly praised the centres' cleanliness, comfort, safety, good organisation and staff enthusiasm.

“Our work with Better to extensively upgrade Wavelengths Leisure Centre – where we have invested £300,000 – includes fully retiling the 25m pool to guarantee

## Try a new sport

COVID-19 has meant many local sports clubs and activities are only just getting back into action. At the time of going to print, indoor fitness classes and group swimming lessons were restarting. Summer is the perfect time to try something new, so why not try out yoga, body pump, a relaxing swim or jump around in a Zumba class? You can find out more about what's available to suit you or your family at [lewisham.gov.uk/inmyarea/sport](http://lewisham.gov.uk/inmyarea/sport)

its life for the next 20 years. We are improving the changing facilities for this pool, which will re-open in the summer. We have also – among other things – installed new water fountains, updated sound systems and upgraded flooring in the gym and studios.

“We are fleshing out ideas for The Bridge Leisure Centre site and hope to share these with residents later this year.

“Leisure centres are very expensive to run – we spent many millions running ours in 2019/20 – and there's no doubt the leisure industry nationally has been hit extremely hard by the COVID-19 pandemic, and the lockdowns and restrictions necessary to protect lives.

“We have been working hard to ensure as many facilities as possible have been able to open safely as soon as guidelines

have allowed, but we have not been able to give a date for the reopening of Wavelengths leisure pool because it needs very significant investment.

“The Council is under intense financial pressure and needs to make savings of £40m over the next three years, so funds for leisure services are very limited. We need to think carefully about how to spend these limited funds to benefit as many people as possible.

“We have promised not to make a decision about the future of the leisure pool before we speak to you. It's right that we involve local residents and the wider community when making decisions like this – we want to make sure we're spending our leisure budget where it's needed.”

# Taking action

## We take a look at the work done across the borough over the two years since declaring a climate emergency

In 2019 we were one of the first local authorities in London to declare a 'climate emergency'. We acknowledged the impact climate breakdown is having on the world, and pledged to take action.

Although this is a global issue, we need to be bold at a local level. We have to lead by example, reducing emissions across all sections of our operations, as well as working

with partners and residents to build a greener Lewisham.

Our Climate Emergency Action Plan details the steps we will take to tackle this issue and become carbon neutral by 2030 and we are pressing ahead with the work. Since March 2020, we have:

- Cut our carbon emissions by 100,000 tons in the last four years
- Upgraded our fleet of waste and recycling vehicles to significantly reduce emissions
- Launched a new Community Energy Fund offering up to £15,000 one-off grants to support initiatives such as solar panels on community buildings
- Lewisham has had one of the highest number of registrations to Solar Together, with 1,750 households signing up to the scheme.
- Secured £435,000 external funding for fuel poverty advice services across South London
- Supported 3,142 households on low incomes or who are

vulnerable with practical advice on staying warm and cutting energy costs

- Secured over £3.7m of funding for retrofitting buildings, including £2.9m from the Public Sector Decarbonisation Scheme to support energy efficiency in Council buildings including our Adult Learning Centres and community centres
- Successfully bid for £825,000 from the Green Homes Grant Local Authority Delivery Fund to improve insulation in Lewisham Homes properties
- Secured £175,000 from the Low Carbon Skills Fund for zero carbon retrofit work on five primary schools.

We will continue to engage with residents and businesses and encourage people to think about ways we can all reduce our carbon footprint.

Small steps can help make a big difference locally – things like reducing waste, improving energy efficiency, and opting for walking, scooting and cycling instead of using motor vehicles for short journeys.

You can find more information on how you can play a part at: [lewisham.gov.uk/climateaction](http://lewisham.gov.uk/climateaction)

To view our Climate Emergency Action Plan visit [lewisham.gov.uk/climateemergency](http://lewisham.gov.uk/climateemergency)



## South London Energy Efficiency Partnership (SLEEP)

Our work to tackle the climate emergency includes taking action on fuel poverty.

In total, SLEEP has supported over 5,000 vulnerable households in the last two years, offering:

- Practical home advice
- Support in switching to lower energy tariffs
- Debt relief advice
- Access to grants and discounts on tariffs where people are eligible
- Support in accessing funding for heating, ventilation and insulation improvements
- Referrals to other sources of help locally, regionally and nationally.



Energy advisers can support and help you save money

COVID-19 has increased the need for the service as many people have been left in difficult financial situations where they have to make hard choices on household budgets. The partnership has responded to the changing circumstances of the pandemic and continued to work locally to prioritise vulnerable residents. The service has switched to a telephone and video-based approach, dropping off energy saving measures, such as draught excluders, where people are in a position to install them.

In the last year, SLEEP has supported 577 households in Lewisham who are living in fuel poverty. The partnership is continuing to expand to provide targeted and practical support to low income and vulnerable households to cut the cost of staying warm and healthy.

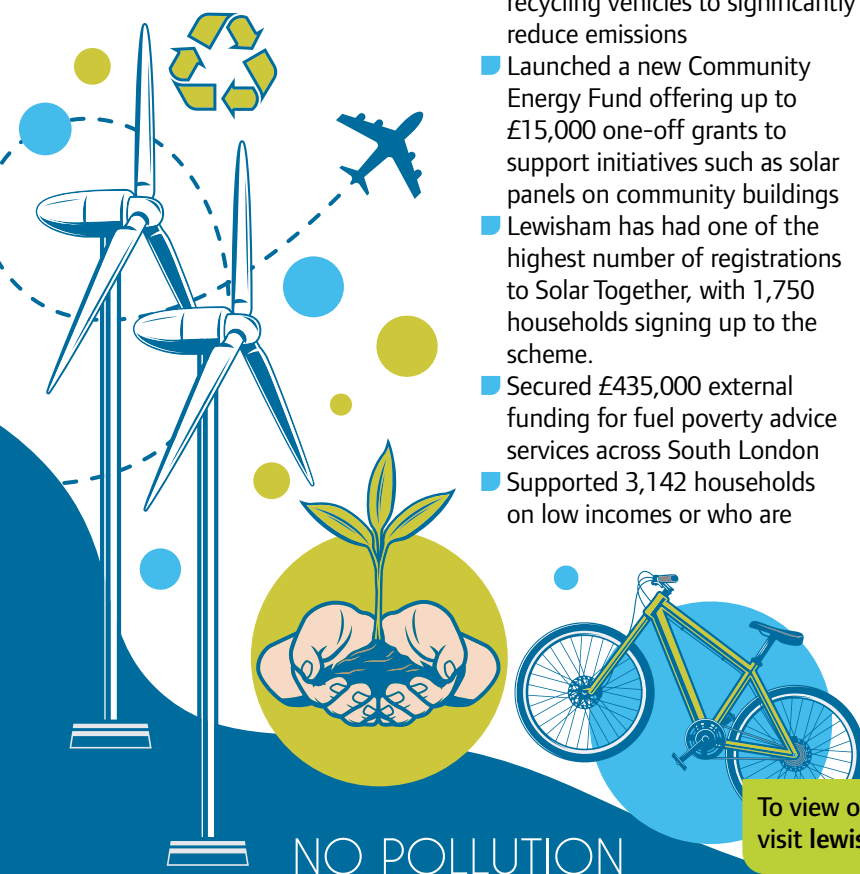
### A residents story

T. split with her partner and subsequently lost her job. These events resulted in T having a huge drop in income and she began to build up debts. The red letters from the debt collection agency caused anxiety and to manage her

energy bills she simply avoided turning on the heating. At the point when our energy adviser intervened she was on emergency credit with no means to top-up. Through one of our partner organisations we accessed a £30 electricity fuel voucher to top-up her meter and get the electricity back on, and worked to get £140 off her electricity bill.

Our advisor advocated on her behalf with the bailiffs to find a workable solution to her outstanding debts. She said that the Council's adviser had 'saved her life'.

For more information about SLEEP visit [lewisham.gov.uk/energyefficiencyathome](http://lewisham.gov.uk/energyefficiencyathome)



NO POLLUTION



# Out and about

A small selection of the many festivals, fayres, outdoor markets, gigs and film screenings going on in the borough this summer

**T**his is the summer we've all been waiting for and there are loads of fun fayres, markets and activities taking place to help make it one to remember. Whether you want to get your boogie on, buy some bits or just unwind, there is something for everyone and every mood!

The fun activities featured here are all COVID-19 safe, but please check the websites provided to confirm the event details before you go.

## 27 June

### Back to Live

A chance for under 18's to finally get back to performing live and a fun night out for everyone else! The main acts are sure to get you on your feet and there will be an open mic for you to showcase your talents. 3–7pm, *Ninth Life, Catford*. Find out more and buy tickets at: [tickettailor.com](http://tickettailor.com)

**30 June–3 July,**  
**Cece's Speakeasy**  
Step into 2031 and



experience an immersive night of entertainment. This performance will feature storytellers, poets and musicians exploring hope and action during the climate emergency. 7.30pm, *the Albany, Deptford*.

Find out more and buy tickets at: [thealbany.org.uk](http://thealbany.org.uk)

## 1–18 July

### Deptford X Festival

SE8 and SE14. This year's Deptford X festival brings amazing art and a festive spirit out into the open. Deptford and the surrounding area



will be transformed into a free outdoor art trail for you to explore. There'll be a map on hand to guide you through streets, shop fronts, front porches and more to discover artworks, performances and events. Find out more at: [deptfordx.org/2021-festival](http://deptfordx.org/2021-festival)

## 2 July

### Cockpit Arts, Deptford.

Cockpit Arts is opening its doors to visitors this summer, giving you the chance to buy from 150 of London's top makers as well as enjoy lively talks and demonstrations. There'll be ceramics, jewellery, homeware,



Eleanor Lakelin  
Cockpit Arts



textiles and so much more! 12 noon–8pm and 3–4 July, 12 noon to 6pm Find out more at: [cockpitarts.com/shop-cockpit/open-studios](http://cockpitarts.com/shop-cockpit/open-studios)

## 17 July,

### Hilly Fields

### Midsummer Fayre

Hilly Fields Fayre has been part of the community for over 40 years and it just keeps getting better! You will find a wide variety of stalls, performances,

raffles, great food and activities for children. It's a great chance to browse, catch up with neighbours, have some fun and (hopefully) enjoy the weather! 12 noon–5pm, *Hilly Fields* Find out more at: [brockleysociety.org.uk/hilly-fields-midsummer-fayre](http://brockleysociety.org.uk/hilly-fields-midsummer-fayre)

**8 August,**  
**Wasteless market**  
Looking for ways to

reduce your waste and help fight climate change? Whether you're a seasoned waste saver or just want to make some eco-friendly swaps, this market will have what you need. Entrance is free so come and explore the multi-vendor Wasteless market! 11am–3pm, *Beckenham Place Park*. Find out more at: [beckenhamplace.org](http://beckenhamplace.org)

## Thursdays,

### Neon life drawing

Explore your creative side with a life drawing session like no other. At this unique session, you'll use neon reactive arts materials to draw vibrant and bold living sculptures. You'll experiment with colour, light and texture and several image-creating techniques, all in a fun and friendly atmosphere. You don't need any

## Libraries

All our libraries run regular events for children and families, and many of them are free. For details, ask in your local library or visit our website [lewisham.gov.uk/libraries](http://lewisham.gov.uk/libraries)

experience, you just need to book in advance. 6–7.30pm and 8–9.30pm, *Ninth Life, Catford*. Find out more and book at: [ninthlife.pub/whatson](http://ninthlife.pub/whatson)

## Thursdays and Fridays

### Peckish

Fancy unwinding with alfresco food and drink in the beautiful Beckenham Place Park? Head down to Peckish, the weekly street food market with stunning views and live DJs. There'll be moreish food, craft beer and good wine – what more could you ask for? 4–10pm, *Beckenham Place Park*. Find out more at: [beckenhamplace.org](http://beckenhamplace.org)

## Fridays, Saturdays and Sundays

### Model market

Fancy a bit of late-night street food? Model



Market's former shop fronts have been turned into a micro-diner market! It is home to five delicious street food traders and all the drinks you could dream of. There are also live DJs to create that Friday night feeling and all tables are sheltered from the rain!

5-11pm, Fridays,  
4-12 midnight, Saturdays,  
1-12 midnight,  
196 Lewisham High Street.  
Find out more at:  
[streetfeast.com/market/model-market](http://streetfeast.com/market/model-market)

### Various dates

#### Pop-up cinema

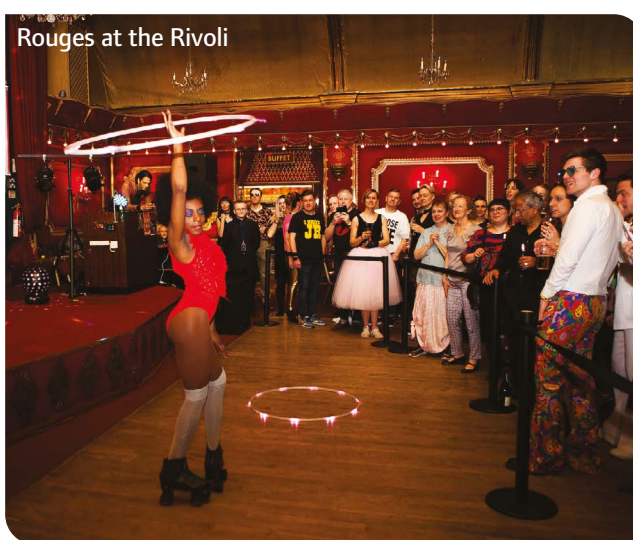
Various dates and times,  
Crofton Park Pictures.

The Rivoli Ballroom has featured in many films itself but you also have the chance to catch some of your favourites in its pop-up cinema. From Back to the Future to Breakfast at Tiffany's, you're sure to find a film that takes your fancy.

Find out more  
and buy tickets at:  
[croftonparkpictures.com](http://croftonparkpictures.com)

### Rouges at the Rivoli

Various dates in July and throughout the year, Rivoli Ballroom, Crofton Park. Dust off your dancing shoes because it's time to get back on the dancefloor! These cabaret nights at the iconic Rivoli



Ballroom blend a fabulous mix of nostalgia, '70s, '80s, disco and funk with a different cabaret show each month. Book in

advance for a night to remember.  
Find out more and book at:  
[rivoliballroom.com/rouges-disco](http://rivoliballroom.com/rouges-disco)



Lewisham's directly elected Mayor, Damien Egan, represents the whole borough. Contact him at [damien.egan@lewisham.gov.uk](mailto:damien.egan@lewisham.gov.uk)

Please check beforehand whether your councillor is holding in person surgeries. Visit [lewisham.gov.uk/councillors](http://lewisham.gov.uk/councillors) or call 020 8314 6000 and ask for 'operator'.

### Bellingham

**Cllr Alan Hall (Lab)**  
020 3441 7620  
[cldr\\_alan.hall@lewisham.gov.uk](mailto:cldr_alan.hall@lewisham.gov.uk)  
**Cllr Rachel Onikosi (Lab)**  
020 831 49021  
[cldr\\_Rachel.Onikosi@lewisham.gov.uk](mailto:cldr_Rachel.Onikosi@lewisham.gov.uk)  
**Cllr Jacq Paschoud (Lab)**  
020 8291 5729  
[cldr\\_jacq.paschoud@lewisham.gov.uk](mailto:cldr_jacq.paschoud@lewisham.gov.uk)

### Blackheath

**Cllr Kevin Bonavia (Lab)**  
020 8314 3721  
[cldr\\_kevin.bonavia@lewisham.gov.uk](mailto:cldr_kevin.bonavia@lewisham.gov.uk)  
**Cllr Juliet Campbell (Lab)**  
020 8314 9386  
[cldr\\_juliet.campbell@lewisham.gov.uk](mailto:cldr_juliet.campbell@lewisham.gov.uk)  
**Cllr Amanda De Ryk (Lab)**  
020 8314 3789  
[cldr\\_amanda.deryk@lewisham.gov.uk](mailto:cldr_amanda.deryk@lewisham.gov.uk)

### Brockley

**Cllr Obajimi Adefiranye (Lab)**  
020 8314 7053  
[cldr\\_obajimi.adeferanye@lewisham.gov.uk](mailto:cldr_obajimi.adeferanye@lewisham.gov.uk)  
**Cllr Sophie McGeevor (Lab)**  
020 8314 3496  
[cldr\\_sophie.mcgeevor@lewisham.gov.uk](mailto:cldr_sophie.mcgeevor@lewisham.gov.uk)  
**Cllr Stephen Penfold (Lab)**  
020 8314 8817  
[cldr\\_stephen.penfold@lewisham.gov.uk](mailto:cldr_stephen.penfold@lewisham.gov.uk)

### Catford South

**Cllr James Royston (Lab)**  
020 831 46696  
[cldr\\_James.Royston@lewisham.gov.uk](mailto:cldr_James.Royston@lewisham.gov.uk)  
**Cllr Alan Smith (Ind)**  
020 8697 5505  
[cldr\\_alan.smith@lewisham.gov.uk](mailto:cldr_alan.smith@lewisham.gov.uk)  
**Cllr Eva Stamirowski (Lab)**  
07392 860305  
[cldr\\_eva.stamirowski@lewisham.gov.uk](mailto:cldr_eva.stamirowski@lewisham.gov.uk)

### Crofton Park

**Cllr Tauseef Anwar (Lab)**  
020 8314 9930  
[cldr\\_tauseef.anwar@lewisham.gov.uk](mailto:cldr_tauseef.anwar@lewisham.gov.uk)  
**Cllr Chris Barnham (Lab)**  
020 8314 9896  
[cldr\\_chris.barnham@lewisham.gov.uk](mailto:cldr_chris.barnham@lewisham.gov.uk)  
**Cllr Pauline Morrison (Lab)**  
020 8244 5315  
[cldr\\_pauline.morrison@lewisham.gov.uk](mailto:cldr_pauline.morrison@lewisham.gov.uk)

### Downham

**Cllr Andre Bourne (Lab)**  
07875 082340  
[cldr\\_andre.bourne@lewisham.gov.uk](mailto:cldr_andre.bourne@lewisham.gov.uk)  
**Cllr Coral Howard (Lab)**  
020 8314 3600  
[cldr\\_coral.howard@lewisham.gov.uk](mailto:cldr_coral.howard@lewisham.gov.uk)  
**Cllr Olurotimi Ogunbadewa (Lab)**  
020 8314 7892  
[cldr\\_olurotimi.ogunbadewa@lewisham.gov.uk](mailto:cldr_olurotimi.ogunbadewa@lewisham.gov.uk)

### Evelyn

**Cllr Caroline Kalu (Lab)**  
020 8314 9387  
[cldr\\_caroline.kalu@lewisham.gov.uk](mailto:cldr_caroline.kalu@lewisham.gov.uk)  
**Cllr Silvana Kelleher (Lab)**  
020 8314 3430  
[cldr\\_silvana.kelleher@lewisham.gov.uk](mailto:cldr_silvana.kelleher@lewisham.gov.uk)  
**Cllr Lionel Openshaw (Lab)**  
020 8314 6382  
[cldr\\_lionel.openshaw@lewisham.gov.uk](mailto:cldr_lionel.openshaw@lewisham.gov.uk)

### Forest Hill

**Cllr Peter Bernards (Lab)**  
020 8314 9927  
[cldr\\_peter.bernards@lewisham.gov.uk](mailto:cldr_peter.bernards@lewisham.gov.uk)  
**Cllr Sophie Davis (Lab)**  
(maternity leave)  
020 8314 3493  
[cldr\\_sophie.davis@lewisham.gov.uk](mailto:cldr_sophie.davis@lewisham.gov.uk)  
**Cllr Leo Gibbons (Lab)**  
020 8314 6916  
[cldr\\_Leo.gibbons@lewisham.gov.uk](mailto:cldr_Leo.gibbons@lewisham.gov.uk)

### Grove Park

**Cllr Suzannah Clarke (Lab)**  
020 8314 6944  
[cldr\\_suzannah.clarke@lewisham.gov.uk](mailto:cldr_suzannah.clarke@lewisham.gov.uk)  
**Cllr Colin Elliott (Lab)**  
020 8314 9878  
[cldr\\_colin.elliott@lewisham.gov.uk](mailto:cldr_colin.elliott@lewisham.gov.uk)  
**Cllr Hilary Moore (Lab)**  
020 8314 7886  
[cldr\\_hilary.moore@lewisham.gov.uk](mailto:cldr_hilary.moore@lewisham.gov.uk)

### Ladywell

**Cllr Bill Brown (Lab)**  
020 8314 9821  
[cldr\\_bill.brown@lewisham.gov.uk](mailto:cldr_bill.brown@lewisham.gov.uk)  
**Cllr Carl Handley (Lab)**  
020 8314 6525  
[cldr\\_carl.handley@lewisham.gov.uk](mailto:cldr_carl.handley@lewisham.gov.uk)  
**Cllr Liz Johnston-Franklin (Lab)**  
020 8314 7985  
[cldr\\_liz.johnston-franklin@lewisham.gov.uk](mailto:cldr_liz.johnston-franklin@lewisham.gov.uk)

### Lee Green

**Cllr Octavia Holland (Lab)**  
020 8314 6686  
[cldr\\_octavia.holland@lewisham.gov.uk](mailto:cldr_octavia.holland@lewisham.gov.uk)  
**Cllr Jim Mallory (Lab)**  
020 8314 6964  
[cldr\\_jim.mallory@lewisham.gov.uk](mailto:cldr_jim.mallory@lewisham.gov.uk)  
**Cllr James Rathbone (Lab)**  
020 8314 7524  
[cldr\\_james.rathbone@lewisham.gov.uk](mailto:cldr_james.rathbone@lewisham.gov.uk)

### Lewisham Central

**Cllr Patrick Codd (Lab)**  
020 8314 9095  
[cldr\\_patrick.codd@lewisham.gov.uk](mailto:cldr_patrick.codd@lewisham.gov.uk)  
**Cllr Aisling Gallagher (Lab)**  
020 8314 8043  
[cldr\\_aisling.gallagher@lewisham.gov.uk](mailto:cldr_aisling.gallagher@lewisham.gov.uk)  
**Cllr Joani Reid (Lab)**  
020 8314 9963  
[cldr\\_joani.reid@lewisham.gov.uk](mailto:cldr_joani.reid@lewisham.gov.uk)

### New Cross

**Cllr Brenda Dacres (Lab)**  
020 8314 9872  
[cldr\\_brenda.dacres@lewisham.gov.uk](mailto:cldr_brenda.dacres@lewisham.gov.uk)  
**Cllr Samantha Latouche (Lab)**  
020 8314 7022  
[cldr\\_samantha.latouche@lewisham.gov.uk](mailto:cldr_samantha.latouche@lewisham.gov.uk)  
**Cllr Paul Maslin (Lab)**  
020 8852 1530  
[cldr\\_paul.maslin@lewisham.gov.uk](mailto:cldr_paul.maslin@lewisham.gov.uk)

### Perry Vale

**Cllr John Paschoud (Lab)**  
020 8314 3437  
[john.paschoud@lewisham.gov.uk](mailto:john.paschoud@lewisham.gov.uk)  
**Cllr Sakina Sheikh (Lab)**  
020 8314 7963  
[cldr\\_sakina.sheikh@lewisham.gov.uk](mailto:cldr_sakina.sheikh@lewisham.gov.uk)  
**Cllr Susan Wise (Lab)**  
020 8314 2214  
[cldr\\_susan.wise@lewisham.gov.uk](mailto:cldr_susan.wise@lewisham.gov.uk)

### Rushey Green

**Cllr Louise Krupski (Lab)**  
020 8314 8983  
[cldr\\_louise.krupski@lewisham.gov.uk](mailto:cldr_louise.krupski@lewisham.gov.uk)  
**Cllr John Muldoon (Lab)**  
020 3489 4640  
[cldr\\_john.muldoon@lewisham.gov.uk](mailto:cldr_john.muldoon@lewisham.gov.uk)  
**Cllr James-J Walsh (Lab)**  
020 8314 9948  
[cldr\\_james-j.walsh@lewisham.gov.uk](mailto:cldr_james-j.walsh@lewisham.gov.uk)

### Sydenham

**Cllr Chris Best (Lab)**  
020 8676 9516  
[cldr\\_chris.best@lewisham.gov.uk](mailto:cldr_chris.best@lewisham.gov.uk)  
**Cllr Liam Curran (Lab)**  
020 8314 6937  
[cldr\\_liam.curran@lewisham.gov.uk](mailto:cldr_liam.curran@lewisham.gov.uk)  
**Cllr Jack Lavery (Lab)**  
020 8314 6692  
[cldr\\_Jack.Lavery@lewisham.gov.uk](mailto:cldr_Jack.Lavery@lewisham.gov.uk)

### Telegraph Hill

**Cllr Paul Bell (Lab)**  
020 8314 7047  
[cldr\\_paul.bell@lewisham.gov.uk](mailto:cldr_paul.bell@lewisham.gov.uk)  
**Cllr Joan Millbank (Lab)**  
020 8314 6929  
[cldr\\_joan.millbank@lewisham.gov.uk](mailto:cldr_joan.millbank@lewisham.gov.uk)  
**Cllr Luke Sorba (Lab)**  
020 8314 9984  
[cldr\\_luke.sorba@lewisham.gov.uk](mailto:cldr_luke.sorba@lewisham.gov.uk)

### Whitefoot

**Cllr Mark Ingleby (Lab)**  
020 8698 8562  
[cldr\\_mark.ingleby@lewisham.gov.uk](mailto:cldr_mark.ingleby@lewisham.gov.uk)  
**Cllr Kim Powell (Lab)**  
020 8314 2051  
[cldr\\_kim.powell@lewisham.gov.uk](mailto:cldr_kim.powell@lewisham.gov.uk)  
**Cllr Jonathan Slater (Lab)**  
020 8314 9981  
[cldr\\_jonathan.slater@lewisham.gov.uk](mailto:cldr_jonathan.slater@lewisham.gov.uk)

## Members of parliament

**Vicky Foxcroft MP**  
Lewisham Deptford  
020 8469 4638  
[vicky.foxcroft.mp@parliament.uk](mailto:vicky.foxcroft.mp@parliament.uk)  
[vickyfoxcroft.org.uk](http://vickyfoxcroft.org.uk)

**Janet Daby MP**  
Lewisham East  
020 8461 4733  
[janet.daby.mp@parliament.uk](mailto:janet.daby.mp@parliament.uk)  
[janetdaby.org](http://janetdaby.org)

**Ellie Reeves MP**  
Lewisham West and Penge  
020 7219 2668  
[ellie.reeves.mp@parliament.uk](mailto:ellie.reeves.mp@parliament.uk)  
[elliereeves.com](http://elliereeves.com)

**Len Duvall AM**  
London Assembly Member for Greenwich and Lewisham  
020 7983 4350  
[len.duvall@london.gov.uk](mailto:len.duvall@london.gov.uk)

**Autumn 2021 Online Music Courses**

BOOK NOW & START from 21<sup>st</sup> September 2021

AYM 10-Week Courses for 11-16s  
Ableton Music Production, MC/Spoken Word,  
Keyboards for Songwriting ONLY £40

Cre8tiv<sup>®</sup> 10-Week Courses for ages 16+  
Keyboards for Songwriting & Logic Pro Production  
ONLY £80 / £40 conc **YouTube One-Day Course** just £40

Please call 07984 158 554 for details & registration or email [theteam@themidimusiccompany.co.uk](mailto:theteam@themidimusiccompany.co.uk)  
[www.themidimusiccompany.co.uk/courses](http://www.themidimusiccompany.co.uk/courses)

**THE STUDIO SE6**  
YOGA • PILATES

WWW.THESTUDIOSE6.COM

e [info@thestudiose6.com](mailto:info@thestudiose6.com)  
t 07961440762

Live online classes available

**MOO SOOL ACADEMY OF MARTIAL ARTS SE6**  
YUSOOL  
(KOREAN JUJITSU)

Classes for all ages: 5yrs+, Teens & Adults

\*FIRST CLASS FREE\*

w [moosoolacademy.com](http://moosoolacademy.com)  
e [info@moosoolacademy.com](mailto:info@moosoolacademy.com)  
t 07710407021

LIVE ONLINE CLASSES AVAILABLE

**Online Pregnancy Yoga weekly classes.**

Thursdays 6.30pm.  
All welcome from 12 weeks.  
Meet local mums to be. Breath. Move.  
Info & booking  
[hello@alexandra.baybutt.co.uk](mailto:hello@alexandra.baybutt.co.uk)

**Local Greenwich-based Media Sales Agency looking to expand their growing team**

If you are interested in a role in advertising sales and think you have what it takes to thrive in a fast-paced sales environment, do get in touch.

Send your CV to:  
[hello@themediasaleshouse.co.uk](mailto:hello@themediasaleshouse.co.uk)  
[www.themediasaleshouse.co.uk](http://www.themediasaleshouse.co.uk)

020 3004 7201 **THE MEDIA SALES HOUSE**

**Goyea Organics** focus on good health and wellness for all.

We offer Juice cleanses, Raw Cold Pressed Juice, Smoothie Bowls & yummy treats.

We use fresh, seasonal organic produce, sourced and delivered daily from UK farms.

Fulfil your cravings with raw guilt free indulgences.

Takeaway service & delivery service.  
Social: @goyeaorganics  
Orders via socials or telephone 07551 309570

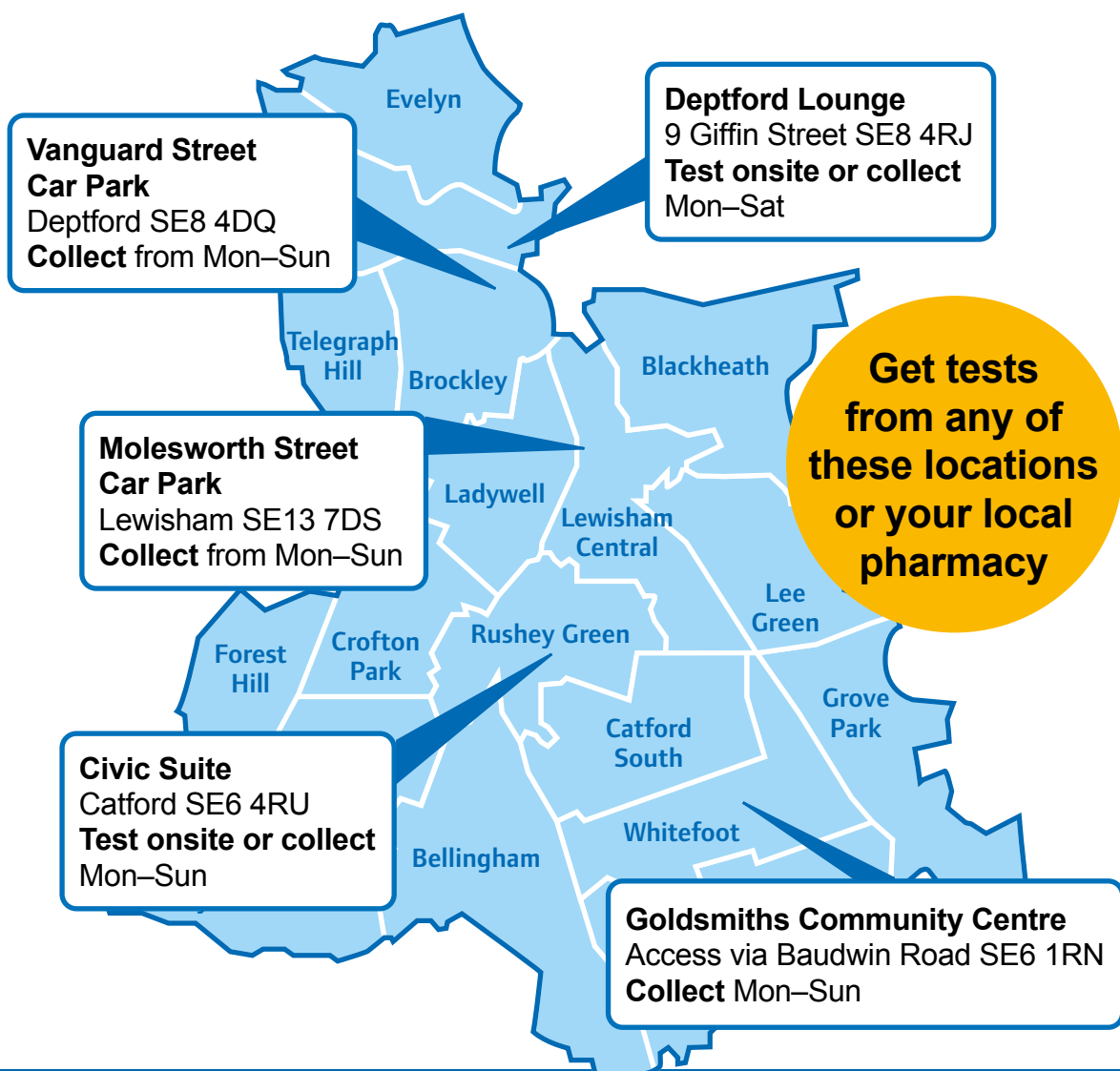


# Get a COVID-19 test in Lewisham

Take a rapid test twice a week, even if you've had the vaccination.

1 in 3 people with COVID-19 don't show symptoms.

Don't put vulnerable people around you at risk.



## Got COVID-19 symptoms?

Stay at home and book a test at [nhs.uk/coronavirus](https://nhs.uk/coronavirus) or call 119

Opening hours may change – check online at [www.lewisham.gov.uk/rapidtest](https://www.lewisham.gov.uk/rapidtest)



Test and Trace