



Lewisham Alternative Education Provision Directory

December 2022



Lewisham

Lewisham Alternative Education Provision Directory

| | Page |
|-----------------------------------|------|
| Foreword | 2 |
| Abbey Manor College** | 3 |
| ADO Alternative Provision | 4 |
| Arco Academy | 7 |
| Flower Skills and Training | 9 |
| The Ilderton Motorvehicle Project | 10 |
| In Toto Ed | 11 |
| Lewisham College**** | 13 |
| Millwall Community Trust | 15 |
| Rockbourne Park*** | 17 |
| Serenity School Eltham* | 18 |
| South Quay College* | 19 |
| S V Academy* | 21 |
| Talk About Art | 23 |
| The Complete Works* | 24 |
| The Tutorial Foundation* | 26 |
| The Write Time* | 27 |
| Urban Mission School* | 28 |
| Wize Up* | 30 |
| Young Lewisham Project | 31 |
| Young Women's Hub* | 33 |
| Your Beauty School* | 35 |

*Independent School subject to Ofsted inspection. Registration as an independent school is compulsory if a provider has more than five full time (18 hours a week or more) pupils or one full time pupil with an Education Health Care Plan (EHCP) or is a Child Looked After (CLA). A school is deemed as 'illegal' by Ofsted if it contravenes these guidelines.

** Pupil Referral Unit

*** Multi Academy Trust satellite

**** Further Education College

Foreword

The providers listed within this directory have undertaken an annual quality assurance visit with Lewisham local authority; have met the Ofsted standards for independent school status, registered Ofsted and in the application stage and have demonstrated the following standards:

| | |
|--|---|
| Quality of education provided: | Lewisham local authority has an on-going responsibility towards learners placed Alternative Provision and has processes in place which assure the quality of provision delivered through external providers. |
| Spiritual, moral, social and cultural development of pupils: | <p>There is evidence of a written policy on the curriculum, supported by appropriate plans and schemes of work which are drawn up and implemented effectively.</p> <p>The provider actively promotes the fundamental British values of democracy, the rule of law, individual liberty, and mutual respect and tolerance of those with different faiths and beliefs.</p> |
| Welfare, health and safety of pupils: | The standards about the welfare, health and safety of pupils at the provision are suitable. The provider ensures compliance with health and safety laws are complied with a written health and safety policy. The provision promotes good behaviour amongst pupils. |
| Suitability of staff, supply staff, and proprietors: | There is evidence of staff DBS checks & a DBS Policy, monitoring of confidential personal and referral records. |
| Premises of and accommodation at the provision: | The standards of the premises of and accommodation at the provision are suitable. Suitable accommodation is provided in order to cater for the medical and therapy needs of pupils. |
| Provision of information: | The provider ensures information for parents of pupils and parents of prospective pupils; and for the local authority. The provider's website contains key essential information. |
| Manner in which complaints are handled: | The provider ensures that a complaints procedure is drawn up and effectively implemented which deals with the handling of complaints from parents of pupils. |
| Quality of Leadership and Management: | The provider demonstrate good skills and knowledge appropriate to their role so that the independent school standards are met consistently. |
| Safeguarding procedures: | The provider implements the correct procedures have been followed where safeguarding concerns have been raised about a member of staff. |

Ruth Griffiths
Head of Access, Inclusion and Participation

Abbey Manor College

Type of provision - Pupil Referral Unit

Abbey Manor College provides educational programmes for 11-16 year olds who do not conform to conventional education. The college offers constructive learning based on vocational and GCSE programmes at KS4 (14-16) and National Curriculum subjects at KS3 (11-13).

Type of learner

KS3 and KS4 – permanent exclusions. KS3 and KS4 – learners at risk of permanent exclusion.

KS4 courses

| | |
|-----------------------------|---|
| GCSE English | BTEC Hospitality |
| GCSE Maths | BTEC Music |
| GCSE Citizenship | BTEC Public Services |
| BTEC Art and Design | BTEC Science |
| BTEC Business | BTEC Sport |
| BTEC Health and Social Care | A range of GCSEs including English and maths. |

When, where and how is this provided

Years 7 and 8 – John Evelyn Campus in Ladywell. All learning takes place on site and is full time.
Years 9, 10 and 11 – Broadoak Campus in Lee Green. All learning takes place on site and is full time.

Referral routes

Referral via the home school or local authority for permanent exclusions. For KS4 interventions and KS5 contact the college direct.

Schools and local authorities that Abbey Manor College works with

Referral via the home school or local authority for permanent exclusions. For intervention places, the home school will complete the referral form.

Charges

£100 per day (in borough)
£150 per day (out of borough)

Contact person and details

Nicola Keast, Deputy Headteacher, email: n.keast@abbeymanorcollege.com, telephone: 020 8297 7060, 40 Falmouth Close, London, SE12 8PJ.

ADO Alternative Provision

Type of provision

ADO operate a specialised AP service that brings together our expertise in both our Healthcare and Education services. We are able to provide a relaxed approach to education for our students and are a registered Training Centre.

At ADO we have a passion for outdoor education and what better location than our Healthcare and Education Centre! The centre, a 6.4 acre woodland and farmland just outside of South East London is home to our 50 species of animal and provides a perfect base to offer many subjects and qualifications relating to our specialisms including Animal Science, Equine Studies, Countryside & Environment, Adventure Sport and many more. We are also able to offer traditional pathways that can include Business Studies, Health and Social Care, and Functional Skills (Maths, English & ICT Entry-Level 2).

Type of learner

Our AP is a specialised education setting that aims to create flexible, individual programmes of learning support for Young People (14+) who, for a variety of reasons, maybe unable to access mainstream education. From the point of referral, we focus on the special educational needs and disabilities (SEND) of the learner and on family support, in order to provide the most effective and appropriate educational intervention.

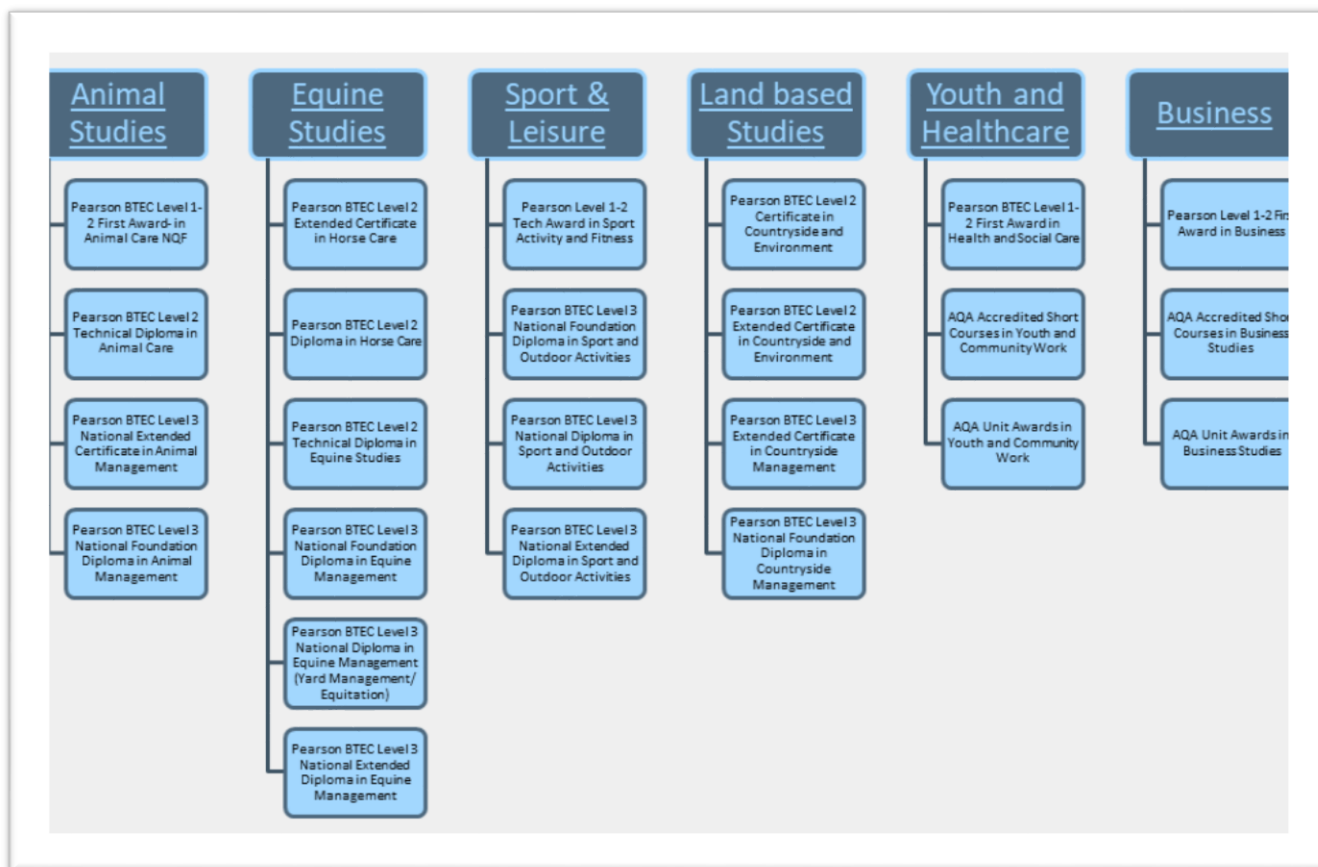
We do offer a 'Therapeutic Day Service' to young people who are below the age of 14, meaning that they can get the benefit from attending our setting however this does not follow educational set outcomes and follows our 'Assisted Activities' model.

Our AP specialises in education placements for young people with SEND including Learning Difficulties, Social Emotional Mental Health Difficulties and associated needs. Our team are multi-skilled and are used to delivering specialist educational programmes as part of a curriculum. Young people who attend with us must have a cognitive understanding of risk in our outdoor setting, and respect the therapeutic ethos that we follow.

We work in small 1:3 classes or 1:1 and aim to offer 'individual learning programmes' to meet their needs and interests enabling young people to learn whilst developing confidence and self-esteem. Our AP is catered to the full school education age range (14-19 with the view to potentially extending this to the age of 25 for caseloads who fit our criteria and withhold an EHCP).

Key Stage 4: These students are in a good position to be able to start with ADO as part of a 'fact finding experience', by being enrolled on to AQA Unit Awards that interest them. An appropriate level AQA Awards (Entry, Level 1 and Level 2) to these young people will aim to support their self-esteem and confidence which could then lead them on to Vocational BTEC Qualifications once we have ascertained the student's academic and emotional baselines. BTEC Courses are offered in various subjects including: Animal Studies, Environmental and Bushcraft subjects, Conservation, Adventure Sport, Creative Education and more. The courses listed in this paragraph are offered in specific areas of interest to the young person, in line with their 'Individual Learner Plans'.

Post-16: Excellent bespoke service that withhold strong career pathways which can be discussed with the student, family and referrer.



We have specialist staff including therapists to support the needs of students with a range of special educational needs and complex learning difficulties or disabilities including mental ill health. Our staff team with therapy qualifications and experience include specialisms in the following interventions:

Counselling
Animal Therapy
Cognitive Behaviour Therapy
Relaxation Therapy

Equine Assisted Learning
NLP/ life coaching
Applied Suicide Intervention Skills Training (ASIST)

How can learners access it? - Referral routes

ADO currently only takes professional referrals from individuals who are directly working to support the student, these include: School, Local Authority, Fair Access Panel, CAMHS, Social Worker, Virtual Schools (LAC), SEN Case Officer.

The professional carrying out the ADO AP Referral Form can access this via our website. Documents can also be attached including any EHCP, relevant therapeutic intervention reports or previous EP reports that will be relevant for review and planning of the child or young person's learning programme.

The information requested within the referral form covers the following areas: Data Collection Including Medical & Psychological Background/ Previous Or Current Therapy Interventions/ Subjects Of Interest Relevant To The Learning Programs Available/ Short & Long Term Life Goals/ Social & Family Background/ Details Of Educational History & Achievements/ Current Educational Difficulties/ Effective Management Strategies In Use.

When, where and how is this provided

Monday-Friday 9am-3pm during term times. Referral Placements require a minimum of two days per week. For students with an EHCP in place we currently are able to provide 1-3 days per week education. Students without an EHCP can attend for 1-5 days per week (depending on individual profile). This intake information is subject to change as we transition into becoming a Registered Further Education Centre.

Schools and local authorities that ADP Alternative Provision works with

Boroughs of Lewisham, Greenwich, Bexley and Bromley, Kent County Council.

Charges

£50 for online assessment (form is sent to parent/carers or relevant adult following professional referral) and £250 1:1 x 2 days assessment. Total Assessment fees: £550

Education Placement Rates: 1:3 ratio Daily Rate - £190 per student, per day, 1:1 ratio Daily Rate - £250 per student, per day +VAT.

Therapy Placement Rates: Daily Rate- £235 (not vatable)

Contact details

education@adoservices.co.uk

therapy@adotherapy.co.uk

www.adorivervalley.co.uk

Tel: 020 8850 6778

Arco Academy

Type of provision

Our 21st century curriculum is influenced by our learners, resulting in our students making excellent progress.

We lay foundations of success which embed together pillars of growth, ensuring our successful learners enjoy learning, make progress and achieve well. Through personalised learning techniques, we build confident individuals who are able to live safe, healthy and fulfilling lives. At Arco Academy we recognise the importance of cementing our student's sense of identity, which in turn enables them to engage in positive relationships and nurture their own talents. Our citizenship offer creates responsible citizens who continue to make a positive contribution to society, while showing respect and tolerance to others.

The Arco curriculum is structured around PE, which is taught daily. We believe sport can enhance a young person's active participation in both physical activities and their inter-connected learning which is taught through all subjects. We offer basketball, athletics, boxing, fitness and football. The focus of these sessions is health, fitness and teamwork. We also offer swimming once a week as part of the curriculum and an additional 2 optional sessions per week after school.

Courses on offer

GCSEs English language, English literature, religious education maths and Science – core subjects. Also History, Citizenship, PSHE – foundation subjects.

Functional Skills Entry level 1 – 3 maths (applied qualification), Level 1 - 2 maths, Entry level 1 - 3 English (applied qualification), Level 1 - 2 English and computing.

BTEC (courses are subject to availability) First Award in Sport (Level 1 and 2) - core subject, Health and Social Care, First Award in Travel and Applied Science.

Vocational Courses (subject to availability)

Leadership course

Marketing course

Athletics Coaching Badge

FA Level Coaching Badge

Athletics Official Coaching Badges

Health and Safety

Nutrition

Communication Skills

Entrepreneurship course

Sports Leaders Awards

Basketball Coaching Badge

Coaching in Disability Sport

Basketball Official Badges

First Aid

Home Cooking Skills

How can learners access it? - Referral routes

Pupils are referred by local authorities and schools.

When, where and how is this provided

Monday – Friday (9:00am - 3pm), Term time only (follows Southwark academic year)

Charges

Different packages available. Please call to discuss.

Schools and local authorities that Arco Academy works with

Many schools in Lewisham, Southwark and Lambeth. Open to other boroughs.

Contact person and details

Lisa Miller, CEO

Anthony Peltier, Principal, apeltier@arco.academy

Arco Academy, Artichoke Place, SE5 8TS, telephone: 020 3189 1193, www.arco.academy

Flower Skills and Training

Type of provision

14-16 practical construction training working towards a City & Guilds 6219 Level 1 Award / Certificate / Extended Certificate / Diploma, depending on the individual's abilities and time available.

Courses on offer

Students who are interested in learning construction trades. Most of our students are in Years 10 – 12 but options are available for younger or older young people.

This training is heavily practically-based and is an ideal opportunity to re-engage into education learners who respond less well to a more academic environment.

How can learners access it? - Referral routes

Referral by school, Local Authority or alternative provisions using a standard referral form.

When, where and how is this provided

Students can be referred for placement throughout the academic year. The training takes place at the Flower Skills Training centre in Charlton with good public transport links nearby.

Available term-time Monday - Friday. Most placements are for between one and three days per week. Taster programmes are available.

Charges

Standard cost £77.50 per student per day. Discounts are available for groups. Short & taster programmes are costed based on student numbers and content / accreditation required.

Schools and local authorities that Flower Skills works with

Royal Borough of Greenwich, London Boroughs of Lewisham, Bexley, Lambeth, Southwark, Croydon, Bromley and Islington

Woolwich Polytechnic, Bexleyheath Academy, The John Roan School, Cavendish School, The Tutorial Foundation, Street Vibes, Newhaven School, Kings Oak School, Park View Academy, Harris Academy- Greenwich, Harris Academy -Falconwood, Harris Academy – Garrard, Deptford Green School and Break Through School.

Contact person and details

Jason Bodimeade, Telephone: 020 8305 50540, Mobile: 07437 011 626

Email: j.bodimeade@flowerskills.com

Ilderton Motorvehicle Project

Type of provision

Motor vehicle training (cars and motorcycles) and personal development.

For what type of learner

14- 19 year olds (up to 25 for SEN statement/EHCP), NEETS.

How can learners access it? – Referral routes

Pupils are referred by local authorities and schools, as well as providers/agencies that work with the target group.

When, where and how is this provided

Roll-on, roll-off during term time.

Charges

Our daily fees are £120+VAT per day, half day rate is £70+VAT.

Schools and local authorities Ilderton Motors works with

Local authorities: Lewisham, Southwark, Greenwich and Bromley, schools, other Educational Providers: Abbey Manor College, South Inclusion Learning Services, New Haven, Lansdowne School, Lewisham Work Experience Team, Complete Works, Shaftesbury, Next Steps Fostering Services.

Contact person and contact details

Iristide Essien
80A Edward Street
Deptford
London, SE8 5HB
Tel: 0208 691 7643, 07956 290 169,
Email: admin@ilderton.org, iris@ilderton.org

In Toto Ed

Type of provision

Alternative Provision. We currently preparing to apply for Ofsted registration as an Independent Special School for ages 11-18.

For what type of learner

Ages 14-18. Our core intake comprises of students who are not accessing mainstream education because they are:

- Experiencing mental health issues.
- Refusing to attend school entirely or for much of the time.
- Experienced bullying or other trauma in or out of school.
- Dealing with difficult/complex life circumstances.
- Excluded from mainstream school.
- Students with physical health conditions such as ADHD, ADD, SEMH, BESD.
- Having Autism/Asperger's.
- Experiencing difficult life circumstances/poor behaviour in school.
- Negative changes in student's attitude to learning, motivation, confidence, and self-esteem.
- Learning disability.
- Students with EHCPs.
- Emotional and behavioural difficulties.
- Poor educational attainment.
- Unable to access mainstream education.
- Bereavement within the family.
- At risk of exclusion or suspension from educational services.
- Struggling to cope with difficult life challenges.
- In a sheltered environment due to domestic violence, homelessness or other.

How can learners access it? – Referral routes

Access to the programme is through an initial referral form, which can be downloaded from our website www.in-toto-ed.com. An appointment is then made to complete the IAG and enrolment process.

If the student is not in school, they must complete assessments in Maths and English. A letter stating the levels they are working towards will suffice if they are in school.

We require relevant SEND and safeguarding information to ensure the students receive the best provision, and their needs are fully met.

Enrolment can take place at any point in the year, and we offer provision either in term time or all year round. Lessons are in termly blocks to allow the student to settle in and develop a rapport with staff.

We aim to begin delivery within one week of referral.

When, where and how is this provided

The centre is open five days a week in term time. Lessons take place between 8.45am-3.30pm in our centre, based in central Blackheath. All our programmes are overseen by a subject specialist with QTS. We have a SENCO and a team of support workers.

Courses currently on offer

Functional skills

- English - Level 1 & 2
- Maths - Level 1 & 2
- ICT - Level 1 & 2

Unaccredited courses

- Life Skills
- PSHE

Accredited courses

- Art and Design - Level 1, 2 & 3
- Arts Award - Bronze (Level 1), Silver (Level 2) & Gold (Level 3)
- Beauty – Level 2
- Business Administration - Level 2 & 3
- Creative Media - Level 2 & 3
- Employability - Level 1 & 2
- Health & Safety in a Construction Environment & CSCS - Level 1
- Health & Social Care - Level 2 & 3
- LAMDA - Grades 1-8
- Live Music - Level 1, 2 & 3
- Music Production - Level 1, 2 & 3
- Personal Training - Level 2 & 3
- Photography - Level 2 & 3
- Foundation Project - Level 1
- Higher Project - Level 2
- Extended Project Qualification (EPQ) - Level 3

We offer a bespoke pathway for each of our students to maximise participation and engagement. As part of our bespoke offering, we are willing to expand our programme to suit the individual needs of each student. If you require a course not listed above, please contact us for further discussion.

Charges

One to one cost = £55 per hour

Small group cost = £40 per hour

One to one plus dedicated support worker = £75 per hour

Schools and local authorities In Toto Ed works with

Cambridgeshire and Peterborough Local Authorities – we have been successfully running centres in Cambridge and Peterborough for the last 2 years.

Contact person and contact details

Emily Gunton – Emily.Gunton@in-toto-ed.com

Tel. 07977 001128

www.in-toto-ed.com

Lewisham College

Type of provision

Lewisham Southwark College is a Further Education College with a focus on vocational learning pathways. The college offers a range of provision for KS4 learners referred from local schools and from Lewisham School Admissions.

Part time vocational courses (work related learning)

One day a week courses running over two years, for Year 10 and Year 11 students, in vocational areas such as, Hair and Beauty, Hospitality (Food Preparation and Cooking), Construction Crafts and Sport.

Learners work in mixed groups with young people from all partner schools.

Entry Links Programme

For Year 11 learners from local special schools in preparation for post-16 transition. The courses involve an extended induction to the College and its facilities, vocational taster courses in practical areas and personal and social development around building confidence and independence.

Year 11 ESOL

Full time courses for young people with a focus on learning or improving their English language skills. The learners are assessed at entry and join classes with 16-19 year olds at the appropriate language level. The learners are usually new to the UK with no secondary school place and with English as an additional language

Type of learner

Part time vocational courses (WRL): learners with an interest in a vocational pathway who are keen to learn new skills in a practical, work related setting.

Entry Links: learners who require a supported entry to the college, often learners with a recognised additional learning needs.

ESOL: young people in Year 11 with English as an Additional Language who are often new to the Borough/ the UK and have no secondary school or whose language needs cannot be met in school.

How can learners access KS4 provision? - Referral routes

Referral is via the home school or local authority

KS4 Part time – applicants are interviewed with parents / guardians following referral from school.

Vocational programmes - applicants attend taster events following a referral from the school and student application form completion.

Year 11 ESOL - via the In-Year Admissions team at Lawrence House to Annette Duncan.

When where and how is this provided

WRL/ Vocational Links: 9.00am-3.00pm - Mondays Year 10 and Fridays Year 11.

Entry Links: usually 1 day per week as arranged by individual schools.

Year 11 ESOL and full time KS4 - up to 25 hours per week or as requested by schools.

Lewisham College has two sites including Lewisham Way and Deptford. The majority of the schools provision takes place at the Lewisham Way and Deptford campuses.

Provision costs

The College is very happy to discuss and develop bespoke provision with schools.

Contact and person details

Head of Student Services, Tracey Andrews, tracey.andrews@lewisham.ac.uk, 020 3757 3371
Head of Supported Learning, Catalin Carantu, catalin.caruntu@lewisham.ac.uk, 020 3757 3635

Millwall Community Trust AP Sport Engagement Programme

Type of provision - Millwall Community Trust 14-16 Alternative Provision (AP) Academy

Millwall Community Trust delivers a varied education programmes to young people aged 14-19. Millwall 14-16 AP Academy is a part-time alternative education provision and acts as a precursor to our post-16 football academy and Sport Traineeship programmes providing KS4 students (incl YR9 opportunities to study towards a recognised L1-2 Sport qualifications, Employability and industry specific qualifications, whilst partaking in practical, sport-related activities and learning.

Our curriculum offers both non-formal theory and practical activities. We aim to help re-engage targeted students in learning and develop the skills, knowledge and understanding necessary for employment in the sports industry sector. MCT also offers provision designed to help students to continue to develop their English, Maths and ICT skills.

MCT has experienced coaches, tutors and mentors who provide students with real life experiences of working within the sports sector, and providing clear and direct post-16 routes into MCT FE programmes, traineeships, coaching and employment.

Programme offer

Our 14-16 AP Academy programme delivers a distinct year 10 and year 11 learning and accreditation programmes alongside with Maths and English support where required and providing the following accredited qualification accessible for students to achieve across each year group:

- Sports Award L2 or Health & Fitness Award L2 (For students on 2 year programme)
- YMCA L1 Fitness & Physical Activity Award (Precursor to Gym instructor professional L2 qual)
- Employability L1 and L2 Award or Certificate
- Money Management L1 and L2 Award
- First Aid L2

Core curriculum

Taking part in sport, assisting sports event, planning and improving own fitness, risks and hazards in sport, how the body works, assisting a leader / coach and working in sport. Career / post-16 opportunities, employability skills, independent living skills, first aid and safeguarding and peer mentoring.

Sixth day provision and intervention support

KS3/KS4 Sixth day provision can be offered for students on fixed term school exclusion. MCT can offer 1:1 student support within school settings. If school phobic or restricted to home, 1:1 tuition or coaching support at a neutral agreed venue can be provided. Schools may also use MCT facilities as an offsite support centre. Bespoke KS3 programmes can be created if required

Type of learner

Young people aged 14 – 16 meeting at least one of the below criteria:

- Currently disengaged from traditional schooling
- An interest in Sport or Elite Footballing potential and desire to work in football or sports industry
- At risk of or currently excluded from mainstream education looking to secure post-16 pathway.

How can learners access the provision? - Referral routes

Pupils are referred by local authorities, schools, Social Care and YOS.

When where and how is this provided

Millwall 14-16 AP Academy: 1-2 days per week (Mon to Fri). Bespoke Group package on request . The programme runs 8.45 to 2.45pm (lunch and full Millwall uniform included). Placements can be either for a term or full year period. Based predominately within the Den (the Millwall Football stadium), the MCT Lions Centre and also from offsite satellite provision. All of which provide a unique learning and sporting environment with relevant work experience in the industry.

Students are expected to travel independently to the Den, though MCT is happy to work with referring schools that prefer to transport their students to the provision. Learners are expected to wear appropriate clothing when attending. Full uniform / kit expectation will be outlined on joining.

Schools and local authorities that Millwall Community Trust works with

Southwark: Harris Bermondsey, Harris East Dulwich for Girls, Compass School Southwark, SILS, Bacons College, Cavendish School, Treasure House, Phoenix Place.

Lewisham: Sydenham Girls, Conisborough College, Deptford Green, Abbey Manor College.

Charges

Millwall 14-16 AP Academy referral: Charged at £80.00 per day.

Contact and person details

John Scarborough, MCT Education and Employability Manager Millwall Community Trust, Lions Centre, Bolina Road, London, SE16 3LN, Email: jscarborough@millwallcommunity.org.uk

Rockbourne Park

Type of provision

Primary Phase Alternative Provision

Type of learner

Primary aged pupils who are out of education/at risk of exclusion.

How can learners access the provision? - Referral routes

Referral forms are available from Lewisham Fair Access Panel

Lavinia Phillips

Email: FAP.lewisham@lewisham.gov.uk

Telephone: 020 8314 7447

When where and how is this provided

We work during term time and operate from 8.30am to 2.30pm, five days a week.

Children are on site 6 x hours a day (30 x hours per week)

We are part of the Kennington Park Academy located in Lambeth and are part of the Parallel Learning Trust.

Schools and local authorities that Rockbourne Park work with

Lewisham Fair Access Panel and all Lewisham Primary schools

Charges

Placements available only through Lewisham Fair Access Panel.

Contact and person details

Melissa Williams, Headteacher, 020 7504 0542 / 07884 181 415 Mwilliams@plt.org.uk

Stephen Orton, Assistant Headteacher, 07854265287 sorton@kenningtonpark.org.uk

Rockbourne Centre, 41a Rockbourne Road, Forest Hill, London, SE23 2DA

Serenity School Eltham

Type of provision

Independent Special School (All through school 5-19 Year olds).

Type of learner

Learners with EHCPs which include SEMH and ASD. We also take direct referrals from mainstream schools for pupils receiving SEN support for complex social and behavioral difficulties. Many of our pupils have a combination of Autism with other Special educational needs and disability (SEND) difficulties.

How can learners access the provision? - Referral routes

Please follow the link to view our referrals process <https://serenityschool.org.uk/eltham-secondary/referrals-enquiries/>. Referrals should be emailed to the email address: referrals@serenityschool.org.uk. At present, we are accepting referrals on an ongoing basis, with no restriction currently in place.

Local authorities that Serenity School Eltham work with

Lewisham, Greenwich, Bexley, Brent, Ealing, Kent, Lambeth

Charges

Our charges are based on the level of required support based on the learner's EHCP. These charges are:

£40K is our standard charge per learner

£58K for learners who require additional 1:1 support

Contact person and details

Richard Skyers – Headteacher (rskyers@serenityschool.org.uk) 020 4529 1960

Gareth McCullough – Managing Director (gmccullough@serenityschool.org.uk) 020 4529 1960

South Quay College

Type of provision

Free School - Alternative provision. South Quay College is an alternative provision for 14-16 year olds. Schools and local authorities can commission us to provide statutory education for young people in Key Stage 4 who would benefit from an alternative to mainstream education.

Type of learner

Key Stage 4 Alternative Provision is for learners who are not thriving in mainstream education for a variety of reasons including:

Personal / Family circumstances, difficulties with peers, vocational interest or ability to engage with mainstream curriculum, behaviour and attendance.

Learners requiring a small, highly supportive environment that promotes academic, social and personal development may be interested in our offer.

We are committed to creating an environment and implementing approaches that are attachment-aware and trauma-informed.

How can learners access it? - Referral routes

Schools or local authorities can refer a young person for a full-time place by contacting us.

Vocational options:

- Art
- Construction (focus on painting and decorating)
- Hospitality and Catering
- Sport

Core:

English and Maths (GCSE and Functional Skills offered)

Pastoral Curriculum, which encompasses:

- Spiritual, Moral, Social and Cultural Development (SMSC)
- Personal, Social, Health and Economic Development (PSHE)
- Citizenship
- Careers Education

Find out more or download our e-prospectus here:

<https://www.southquaycollege.org.uk/ks4-referrals>

When, where and how is this provided

KS4 is delivered from our main address. We follow regular term dates in line with London Borough of Tower Hamlets. Young people can be referred throughout the year.

Summer Transition: From June until the end of term, young people in Year 9/10 can access our summer programme. School Day: 9am – 2.45pm

Charges

Charges will be pro-rata according to the number of days of planned delivery from the learner's start date to the end of the academic year.

Full time place: £11,500

Full time place for young person with EHCP: £17,500

Schools will need to sign an SLA and commit to funding the full duration of the placement if the young person joins us in Year 10 (or summer term of Year 9) and is due to complete KS4 with us.

Additional costs

For learners with Statements of SEN / Education, Health and Care Plans, the referral will need to be approved by the local authority SEN Team. Additional support costs for specific needs will need to be agreed during the consultation period, prior to the referral being confirmed.

Schools and local authorities that South Quay College works with:

Tower Hamlets (our commissioning LA), Barking and Dagenham, Hackney, Islington, Kensington and Chelsea, Lewisham, Newham, Southwark

Contact person and details

Ms Keziah Man, Director of Student Services, keziah.man@southquaycollege.org.uk

Tel: 020 3727 6300 / 07814646078

Address: 32 Mastmaker Court, London, E14 9UB

Twitter and Instagram: @SouthQuayEd

<https://www.southquaycollege.org.uk/>

S V Academy

Ofsted 'Good' Music & Media Specialist Independent School

Type of provision

OFSTED inspected Alternative Education Independent School. **Consistently rated 'Good' across all areas, at every inspection since inception.**

Life-changing opportunities

StreetVibes Media Academy (SV) is an AP school with a track record in securing government and public funding to deliver additional opportunities to our school community. This has included grants from the Greater London Authority, Youth Endowment Fund and the Turing Foundation to fund after-school activities programmes, school holiday positive activities and school trips, including PGL and a fully funded overseas trip to Barbados. These opportunities are open to all pupils referred to our school, and support our mission to raise aspirations, develop key skills and support sustained positive change in young people.

Re-integr8: Sixth day exclusion provision

StreetVibes Media Academy (SV) offers short, sixth-day exclusion reintegration programmes for pupils on fixed term exclusions from schools and those requiring respite places. Students follow the national curriculum for their age together with programme of engagement, pastoral care, behavioural management and mentoring interventions with the aim of sustainable reintegration with school or successful transition to post-16 courses. Our Re-integr8 programme is supplemented by additional mentoring and tracking once the pupil has returned to school, to support each pupil to sustain and succeed at school, long term.

Full time, part time & SEN provision

SV delivers full and part time education for pupils who are unable to be accommodated in mainstream schools. This can include looked after children, new arrivals to the UK, young offenders and pupils who are undergoing assessment for an EHCP. Our DfE-approved, creative and vocation-led curriculum, designed in partnership with Goldsmith University's Inclusive Education department, delivers GCSEs, BTECs and Arts Award qualifications as well as Functional Skills and Essential Digital Skills Qualifications and is supplemented by Matrix-accredited Information, Advice and Guidance to support learners into positive post-16 destinations.

At Key Stage 3, our curriculum includes practical and vocational skills such as cookery and gardening alongside small nurture groups in English, maths and Science.

At Key Stage 4, pupils access 6-8 GCSEs alongside BTECs and Functional Skills supplemented by a technology-rich curriculum and a citizenship programme that prepares pupils for the world of work and apprenticeships and embeds skills for further study at post-16.

At post-16, SV offers government-funded Post 16 Study Programme in BTEC Digital Music and Media, supplemented by GCSE maths and English. This can provide a seamless transition route for Year 11 pupils who have joined GCSEs late in the year, or who require a smaller setting for post-16.

Type of learner

SV has an 18-year track record of supporting and educating young people. Our programmes resonate with any pupil that requires additional support to achieve in a mainstream school setting. Our offer includes small classes (1:4 staff:student ratio); high levels of pastoral care; school nurse; school counsellor; learning mentor; vocational curriculum; after school clubs in boxing, music and art; breakfast club (free breakfast).

Our specialism is Music and Creative Media and our school is fully equipped with drums, piano, bass and electric guitars, recording studios, filmmaking equipment and animation lab.

Referral process

Pupils are referred by schools and statutory agencies (YOS, Children's services etc) and we can usually turn around referrals in less than 24 hours. Admission is by interview with placements commencing immediately afterwards.

Location

SV Academy is based at 6 Eltham High Street, SE9 1DA. We offer entry points throughout the school year.

Charges

All costs include all materials, teaching, qualifications and lunch. Breakfast, after-school activities, 1:1 reading and maths and after-school English, maths and science tuition is offered at no charge to all pupils.

Full-time: £92 excl VAT per day

Part-time: £88 excl VAT per day (1 to 3 days per week)

Pupils with an EHCP: £98 excl VAT per day (following review of needs).

Contact and person details

Sonia Ramanah, Director and DSL, StreetVibes Media Academy

Telephone: 0203 031 8240

Mobile: 07887 640 335,

Email: sonia@streetvibes.org

Website: www.streetvibes.org

Talk About Art

Type of Provision

Studio Reboot is a fully equipped art studio providing the opportunity for young people to explore a wide variety of techniques and media, discovering new ways to express themselves.

Type of learner

KS3/4 pupils who have been excluded, are at risk of exclusion or are struggling to engage with mainstream education.

How can learners access the provision - Referral routes:

Referral by school, Local Authority or alternative provisions using a standard referral form. Copies of the referral form, support plan and welcome pack can be obtained by contacting Melanie Jones at talkaboutart@outlook.com.

When where and how is this provided

Studio Reboot is open on a Friday from 9.30 – 4.30, 39 weeks a year during term time.

Schools, local authorities that Talk About Art works with

We have worked with Lewisham and Greenwich local authorities. We have worked with Lewisham Virtual School, St Matthew Academy and approximately 12 primary schools across the two boroughs.

Charges

For the next academic year (2022/23) we are fortunate to be able to offer Studio Reboot as a fully funded pilot scheme. After this charges will apply.

Contact and person details

Melanie Jones, CEO

Email: talkaboutart@outlook.com

Mobile: 07747 858609

The studio is located at The Dumps, 14 Oakview Road, London, SE6 3QF.

The Complete Works

Type of provision

We are a registered alternative education school and charity, built on an ethos of bespoke and creative learning. We work with young people who are unable to attend mainstream school for a variety of reasons including mental health, complex educational needs, previous school exclusions, or medical conditions. Through a combination of group and 1:1 education, extra-curricular creative projects and holistic wellbeing support, we provide our students with a nurturing and supportive educational experience, helping them to rediscover their love of learning and thrive in our school community. Since being founded in 1999, we have positively changed the lives of countless young people.

We design a bespoke education package for every student, which is as unique as they are. Drawing from a broad range of vocational and academic qualifications, our students discover new skills and passions, opening the door to many exciting career opportunities. Lessons are taught in our Learning Hubs, which are equipped with a range of state-of-the-art facilities (including a construction workshop, training kitchen, music studio, science lab, drama studio, art studio and therapy room). The Hubs give students the chance to work alongside other young people and take part in a variety of courses, including BTECs, Vocational Courses and GCSE and KS3 immersive learning days. Class sizes are kept small (usually below 5 students), to allow the teacher to give everyone the attention they need. We also work on a 1:1 basis in the community or in students' homes. All lessons, no matter what level or subject, are designed to be creative, dynamic and personalized to the learners present. Every student is offered a combination of group and 1:1 learning, as well as weekly personal development sessions and the option of counseling.

Student enrolment can take place at any point the year and for short or long periods of time. All courses are age appropriate and we can accommodate students in Key Stages 1 - 5. Students are able to study with us for up to 30 hours a week.

Our curriculum is built upon a foundation of the Core Subjects (Maths, English, Science and PSHE), with a wide range of additional GCSE and BTEC qualifications including Photography, Art, Cooking, Music, Animal Care & Land-Based Studies, Business Enterprise, Construction, Creative Media, Digital IT, Hair & Beauty, Mechanics and Music. Some students may be more suited to study for Functional Skills and Entry Level Examinations, which we are highly experienced at delivering. We also offer Arts Award and LAMDA qualifications.

Type of learner

Young people join us when they need a new approach to their education, after mainstream school has proven unsuitable or impractical. Many of our students have missed out on large parts of their education, for reasons including ill health or personal circumstances. Some may have special educational needs, disabilities, or be on the autism spectrum. We also work with young people who have been excluded from other schools.

How can learners access KS4 provision - Referral routes

We accept referrals through schools or local authorities.

When where and how is this provided

We offer vocational courses and immersive GCSE Days, taught at our Learning Hubs, alongside three-hour 1:1 lessons in students' homes or in the community, plus Personal Development Sessions and Counselling. These sessions can be bought into individually, or as part of a full-time Single Roll package.

Our learning Hubs are at the following locations:

- Creative Hub - Universal House, 88-94 Wentworth Street, E1 7SA
- Lewisham Hub - Unit D, Adana Building, Conington Road, SE13 7FD
- Bermondsey Hub - Salmon Youth Centre, Old Jamaica, SE16 4TE
- Shoreditch Hub – 38 Commercial Street, E1 6LP
- Attlee Hub - 5 Thrawl Street, E1 6RT

Schools, local authorities that The Complete Works works with

Southwark, Hackney, Islington, Lewisham, Tower Hamlets, Lambeth, Westminster, Camden, Haringey, Merton, Ealing.

Charges

Single Roll Referrals

Charged Half-Termly

Full time (25 hours per week) £7,500

Post-16 (19 hours per week) £5,985

Dual Roll Referrals

Offsite Session (per three hour session) £142.50

Onsite Day (including lunch) £288.50

Speak to us for a personalised quote, including optional add-ons.

Contact and person details

Adam Dalton - Headteacher

Email: headteacher@tcw.org.uk

Telephone: 020 7377 0280

The Tutorial Foundation

Type of provision

A private alternative provision in Bromley which provides an educational setting for pupils in Key Stages 1 to 5 with a specialism in Key Stages 3 and 4. Established in 2005, we have a proven track record in delivering both educational and pastoral support to both mainstream and SEN students, especially those with challenging behaviour.

Our excellent teaching and nurturing environment ensure that our students reach their full potential by gaining qualifications in Years 11 – 13. We have the experience and facilities to accommodate children with special educational needs, particularly those with ASD and ADHD.

We provide tutoring in one to one or small groups, both at The Tutorial Foundation Day School and offsite at the student's home, local library or online which caters for the needs of the individual child. We offer full-time, part-time or respite provision, available between one to five days a week, Monday to Friday throughout the school term.

Type of learner

All types.

How can learners access the provision - Referral routes:

Local authority, school and private referrals.

When where and how is this provided

Usually 9am - 2pm, Monday – Friday, term-time only.

Schools, local authorities that The Tutorial Foundation works with

Lewisham, Bromley, Greenwich, Croydon, Bexley, Greenwich, Ealing, Surrey, Southwark, Islington and Kent local authorities.

Ravens Wood, Ravensbourne, Chislehurst School, Bullers Wood, Charles Darwin, Langley Boys, Coopers, Hayes, Conisborough College, Knights Academy, Forest Hill Boys, Sedgehill, Prendergast, Harris Academies, New Woodlands, St Augustine's, Deptford Green, Cleeve Park, Stationers Crown Wood, Step Academy Trust

Charges

- | | |
|--|---------------------------------------|
| ▪ Onsite group £27.50 + vat per hour | Offsite A distance £46+ vat per hour |
| ▪ Onsite individual £41 + vat per hour | Offsite B distance £59 + vat per hour |

Contact and person details

Julia Low, Headteacher,
Telephone: 020 8460 0181 option 3
Email: sen@thetutorialfoundation.co.uk
Website: <https://thetutorialfoundation.co.uk>

The Write Time

Type of provision

Ofsted approved Independent Special School.

Type of learner

KS3 – KS4 age range and of all abilities.

How can learners access the provision? - Referral routes

Via Secondary Fair Access Panel, Local authorities, or direct referrals from schools

When where and how is this provided

Monday-Friday (9:30am - 2.45pm) – breakfast club at 8.30am
The Write Time, Warrington road, Croydon, CR0 4BH

It is provided in the form of six lessons a day, with fully qualified staff, offering GCSE subjects, Functional Skills, PSHE, Skills for Life, First-Step Accredited Courses, and Personal and Social Development

Schools and local authorities that The Write Time works with

Croydon, Lambeth, Merton, Lewisham, Wandsworth, Southwark, Sutton, Bromley, Bexley, Brighton

The Limes College, The Archbishop Lanfranc Academy, St Mary's Catholic High School – Croydon, Deptford Green School, Sedgehill School etc

Charges

Core Fees: £35,995 per year

Online Provision: £33,262 per year

1:1 Support (including school fees): £70,285 per year

Contact and person details

Samantha Hoyer, Headteacher, telephone: 020 8689 7676, Mobile: 07415 871 847, email: samanthahoyer@thewritetime.org.uk

Urban Mission School (UMS)

Type of provision

Independent School

School Offer

The school is registered for 18 students and delivers a nurturing and small classroom-based provision for KS3 and KS4 students. We offer full time education for students aged 11-16 for short and long term placements.

Our Students

This is not just those with SEND, but the children who, despite numerous interventions, may not be progressing as they would have been hoped.

We specialise in working with children who have had Adverse Childhood Experiences (ACES). Our team collectively possess the necessary skills to supporting young people who have Social, Emotional and Mental (SEMH) challenges. Using a range of therapeutic interventions and principles we endeavour to support our students in developing emotional resilience, a feeling of safety and well-being. This then enables students to be better positioned in accessing a skills-based curriculum.

Family Support

Our family-centred approach recognises that the family is the central most important element in young people's lives. In order to effectively make an impact on a young person's development, education and outcomes it is essential that there is a positive relationship between school and home.

Therapeutic Interventions

All staff are trained in Youth Mental Health. We take a holistic approach to young people and their education, this happens by developing the skills, competencies and confidence in young people which support the building of positive relationships with staff, peers and their learning.

The following strands of support and intervention are available to students as appropriate: Counselling, Art therapy, Psycho therapy, Mentoring and Lego therapy

Attainment and progress

We offer academic and vocational pathways, students are able to obtain attainment in:

- Functional Skills in Maths and English at Entry Level 3, Level 1 & 2 .
- Arts Award with Music, Media or Dance pathways available.
- GCSE's in English language, Mathematics, Biology, Citizenship and Religious Studies.

How can learners access provision

Schools, Local Authority, Fair Access Panel

When where and how is this provided

School day Monday-Friday 8.30am - 2.30pm (Wednesday 8.30am -1.00pm).
Breakfast 8.30am- 8.45am, (inclusive of daily charge), hot lunch is provided, (additional cost of £2.50 per day).

Charges

Please contact us, as this changes each academic year.

SEND/EHCP/LAC: 30% uplift in the charge, plus any additional staffing/tutoring costs.

Contact and person details

Executive Head: Linda Ughere

Site Location: 1 Cornmill Lane, Elmira Street, London, SE13 7FY

Tel. No.: 02083186133

Email: linda.ughere@umsc.uk

Website: www.umslewisham.uk

Wize Up

Type of provision

Alternative provider for young people with emotional and behavioural support needs. Wize Up provides long and short term placements.

Other provision

Access to an on-site counsellor. Self-esteem group sessions on a termly basis.

Programme offer

GCSE: English Language and Literature, Maths, Citizenship, Biology and RE.

Functional Skills: English, Maths and ICT. Entry Level qualifications also available. Princes Trust

Type of learner

Young people considered to have some SEN needs – emotional and behavioural. Learners with different types of learning styles such as these are incorporated into Wize Up's lesson delivery.

How can learners access KS4 provision? - Referral routes

Access is via schools sending referrals to Wize Up with details of the learner and any support needs. The learners are then invited to attend an induction with their parents/carers provided this provision is suitable for them.

When where and how is this provided

Monday – Friday: 9:00am to 3:00pm (4:00pm for year 11 beginning of term two). Hot lunch is provided, inclusive of daily charge. Five sessions take place daily with young people taught in three separate groups (Group one all KS3, Group two year 10, Group three year 11).

Girls only provision (Ruby) providing spaces for 30 students in a therapeutic environment 9:15am – 3pm as above with four sessions daily coupled with therapy focused sessions.

Schools and local authorities that Wize Up works with

All Greenwich schools. Greenwich, Lewisham and Bromley LAs. Local and Bexley schools.

Charges

£95 (main site) £100 (Ruby site) per day although should placements be booked in advance via a Service Level Agreement a discount may be applied depending on the number of places booked.

Contact and person details

Karlene Thomas, 579 Westthorne Avenue, London, SE9 6DN,
Tel: 0208 859 9664
Karlene.thomas@wize-up.org.uk admin@wize-up.org.uk

Young Lewisham Project

Type of provision

Young Lewisham Project is a specialist alternative education provision delivering vocational courses to young people from Lewisham and surrounding boroughs. Our activities include working in small groups to deliver Motorbike and bicycle mechanics, gardening and horticulture, carpentry and joinery skills, cooking, crafts and fitness sessions. Most of our courses are ASDAN or OCN Level one or entry accredited.

We focus on practical activities and regularly do trips and off site motorbike and mountain bike trips in safe, legal and positive environments to learn safe riding skills and discourage future anti-social riding.

We provide a safe, inclusive learning environment where young people can maximize their chances of becoming valued members of society, we aim to re-engage young people into education and their local community, increase their confidence and well-being and improve their skills and self-esteem.

Type of learner

13-19 years old (SEN up to 25). Young people who are at risk of (re)offending or anti social behaviour and/or are vulnerable. NEET young people, we are highly effective in rerouting NEET young people back to education / employment. SEN & EHCP young people. Looked After Children. Those who have an interest in practical skills and courses. Suitable for all abilities and no prior practical knowledge essential.

How can learners access provision? (Referral routes)

Referrals can come through schools/ colleges, SEN providers, other full time alternative providers, colleges, Youth Offending Service, Looked After Children Teams, Young Carers, Lewisham Concern Hub. We also offer some open access drop in community sessions for any young person aged 12-18 years.

When where and how is this provided

Daily 9.30 - 3 term-time programme for vocational courses and NEET young people or those referred. Courses are delivered from our fully equipped unique workshop space in Forest Hill, SE23 2SR.

Schools and local authorities that Young Lewisham Project works with

Many schools in Lewisham including, New Woodlands School, Sydenham Girls and Forest Hill Boys. Drumbeat, Brent Knoll, Tutorial Foundation, The Complete Works, TLG, Bonus Pastor, EMLM, Children's Services in Lewisham and the Youth Offending Service. We also work within Southwark, Bromley, Greenwich and Lambeth.

Charges

£95 per day per student, special rates negotiable for groups. Includes hot home cooked lunch, all safety equipment and trips.

Contact and person details

George Smith - Project Co-ordinator

Email: george@youngelewisham.org.uk

Address: 124 Kilmore Road, Forest Hill, London, SE23 2SR

Tel no: 0208 291 9771 or 07305052486

Young Women's Hub

Type of provision

The Young Women's Hub, a specialist and therapeutic all female school in Lewisham was graded 'Good' in all areas by Ofsted in May this year! Ofsted recognised that our staff '*have high expectations of pupils' work and behaviour*' and '*Pupils learn how to be resilient. They can better manage difficult situations with staff and their peers. They develop confidence and self-esteem.*'

The Young Women's Hub offers a safe, holistic wraparound, alternative education provision which provides tailored made educational packages for young women who have struggled or are struggling with mainstream education.

Many of our students have experienced or are experiencing significant barriers to learning within their mainstream school and demonstrate particular educational, social, and emotional needs. The majority of students who access the support of the Young Women's Hub come with either trauma or attachment issues, SEN (both formally diagnosed and undiagnosed) or in many instances both.

Therefore, the Young Women's Hub curriculum ensures that the subjects that are covered within the hub support the knowledge and skills that students need in order to take advantage of opportunities, responsibilities, and experiences of later life.

To support our young women we offer individual education plans with wrap around pastoral support. Functional skills in English and Math's, vocational studies including ASDAN courses and the Prince's Trust Achieve program, Post 16 destination plans and work experience and weekly PE sessions plus extra curriculum educational trips.

Type of learner

The Young Women's Hub specialise in supporting very vulnerable young women 11-16 and are highly experienced in improving low attendance, working with pregnant and young mums and those at risk of sexual exploitation, managing bullying and school phobias and low academic progress. The majority of students who access the support of the Young Women's Hub come with either trauma or attachment issues, SEN (both formally diagnosed and undiagnosed) or in many instances both.

Safeguarding is a key area that we take pride in and we build trusting relationships with family and other key support staff to ensure that the young women are kept safe.

How can learners access KS4 provision? (Referral routes)

The Hub takes referrals from local authorities, schools and colleges, as well as providers/agencies that work with our target groups.

Please see our website on how to refer students to the Hub, where you can also download a referral form or telephone/email for more information.

When where and how is this provided

Young Women's Hub operates a full timetable with school starting at 9.30am and ending at 3pm, Monday to Friday. The hub provides breakfast and home cooked lunches as part of our provision, and is included in the daily cost.

Schools and local authorities that Young Women's Hub works with

All schools and local authorities.

Charges

Please contact the Young Women's Hub for daily costs.

Contact and person details

Philippa Wall
Head of School
308 Brownhill Road, Catford, SE6 1AU
Telephone: 0208 698 6675,
Email: pwall@ywh.org.uk/cscott@ywh.org.uk

Y.O.U.R Beauty School (YBS)

Type of provision

Y.O.U.R Beauty School CICI specialise in offering accredited level 1-3 Beauty Therapy courses in:

- Make-up
- Skincare-facials
- Waxing
- Eye treatments
- Nail treatments
- Manicure
- Pedicure
- Massage

We also offer qualifications in Maths and English functional level 1-2 and support preparation into employment via our employability course. Our mix of practical and theory based qualifications, support young people into further education, we also offer work experience within our on-site beauty salon, which helps towards gaining experience for employment.

Short Courses, five or 10 sessions (day release from home school):

- Level 1 Award in Basic Make-up Application
- Level 1 Award in Nail treatment
- Level 2 Award in the Art of Photographic Make-up

Type of learner

Young people aged 14-19 who would benefit from an alternative to mainstream education, who have an interest in beauty therapy, are at risk of exclusion or have disengaged from mainstream school.

How can learners access KS4 provision? (Referral routes)

Learners are referred by local authorities, schools and colleges, as well as providers/agencies that work with our target groups.

When where and how is this provided

Monday-Friday: 10.00am-2.30pm (Lewisham term time dates). (9.30 am -breakfast club)
Learners can start at any point in the academic year.

Schools and local authorities that Y.O.U.R Beauty School works with

Referred by local authorities and schools.

Charges

From £90 per day

Contact and person details

Head of School - Kareena Taylor: ktaylor@yourbeautyschool.co.uk

Deputy Head - Tracey-Anne Manning: tmanning@yourbeautyschool.co.uk

28 Sangley Road, Catford, SE6 2JH, telephone: 0208 698 0345,
email: www.yourbeautyschool.co.uk