



FUTURE LEWISHAM

Our borough's recovery



In March 2020 our lives changed in ways that few could have predicted, and over the last year the realities of living through a pandemic have affected each and every one of us.

Our way of life changed almost overnight, as we made sacrifices and navigated restrictions to protect our communities. Some of us tragically lost loved ones or suffered ourselves at the hands of this awful virus.

We will never forget those we have lost, nor will we forget the incredible contribution of those who've bravely kept us going throughout the pandemic – our doctors, nurses, supermarket workers, delivery drivers, waste and recycling collectors and other frontline workers.

We are working with the community to consider how best to commemorate those lost, and recently planted a blossom tree in the Therapeutic Garden at St Mary's Church, which I hope will stand as a beautiful, lasting tribute and bring some comfort to friends and family.

With the vaccination and testing programmes rolling out at pace, the

country is now taking cautious steps on the road to recovery, but we know that for many people the true impact of the pandemic is only just beginning to be felt.

Locally, unemployment rates are up, and over 12,500 more people are now claiming unemployment benefits. The pandemic laid bare the inequalities in health and wealth that still exist in our borough; our public services are under increasing demand and the survival of the small, independent businesses that play such a key role in our local economy, is on a knife edge.

As well as responding to the immediate challenges, it's important that we seize this opportunity to do things differently and drive forward the changes we want to see in our borough – to shape the future of Lewisham.

We face huge challenges over the coming 12 months; we will need to continue to be flexible, determined and ambitious, and will need to make some difficult decisions. This document outlines our ambitions for the future of Lewisham and our priorities for the year ahead.

Four core themes run through the heart of our plans for Future Lewisham:



A greener future



A healthy and well future



An economically sound future



A future we all have a part in

As a Council we will do everything in our power to support those who need us most and build on the amazing community spirit and local activism that has made me so proud over the last year. As your Mayor, I will continue to make Lewisham's voice heard nationally, I will make sure that we never lose focus on supporting those who need us most, and I will make sure that the values that make Lewisham such a special place are at the forefront of our recovery.

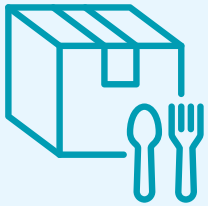


Damien Egan
Mayor of Lewisham

During the pandemic

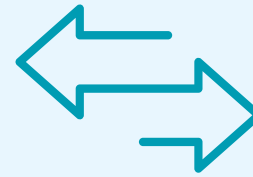
12,000

food parcels delivered to residents who were shielding



2,500+

residents volunteered at the Community Hub



140

Council staff redeployed to support our response

50,000

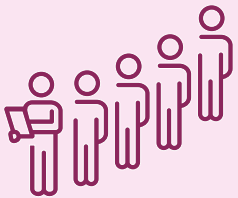
calls made to clinically vulnerable residents



Now

12,600+

more people claiming out of work benefits



6,000

additional referrals to food aid organisations

24,600

residents furloughed



£65m

in grants distributed to local businesses

20,000

visits to support businesses to reopen safely



FUTURE LEWISHAM – Our borough's recovery



A greener future

Our next steps will be our greenest yet, continuing our efforts to preserve our climate for future generations and ensuring everyone can enjoy the place we call home.

We will capture and build on the best of what we saw from the increase in walking and cycling locally, and all the other ways our environment benefitted from behaviour changes over the last year.

We will nurture and protect our borough so that we can continue to appreciate its benefits for generations to come.



A healthy and well future

Good health and wellbeing should be something we can all depend on, something that is equally accessible to everyone.

We know this is much wider than 'medicine' and the NHS. Our health and wellbeing is also dependent on our housing, the air we breathe, our support networks and more.

We will all make sure to pay as much attention and invest as much effort into improving these wider factors and taking action on inequality at every turn.

Acting on the causes of health inequalities and supporting good mental health and wellbeing for everyone drives what we do.

FUTURE LEWISHAM – Our borough’s recovery



An economically sound future

We are working to get the borough back in business, with a future where everyone has the jobs and skills they need to get the best that London has to offer.

We are a borough with employers that are adaptable and prepared for change, a thriving local economy that sees ‘local’ as the first and best choice, with digital inclusion at the heart of our plans.

We will do all we can to support residents into jobs that pay fairly and provide families with the opportunities and security they deserve.



A future we all have a part in

We will work together as one borough to harness the power of volunteering and community spirit that has helped get us through the last year.

We will work alongside our strongest asset – our community – to strengthen and enhance the opportunities and support available in our borough, making sure they can be accessed by those who need them most.

We will support people and organisations to collaborate and take an active role in our borough. We will encourage residents and businesses to feel more connected to their neighbours and surroundings.

Our year as Borough of Culture 2022 will be Lewisham’s best year yet, celebrating our fantastic part of London and providing opportunities for everyone to connect and get involved in our local community.



Find out more and keep up to date by following
#futurelewisham
on social media and sign up for our free, weekly newsletter at
www.lewisham.gov.uk/signup



FUTURE LEWISHAM Our boroughs recover