

Within Conservation Areas: Acceptable example of plans/photographs to accompany applications for windows

Existing

Clearly labelled windows on a photograph showing the whole frontage of the building.

PICTURE 1

FRONT UPPER
BAY WINDOWS
& SIDE WINDOW



FRONT LOWER
BAY WINDOWS

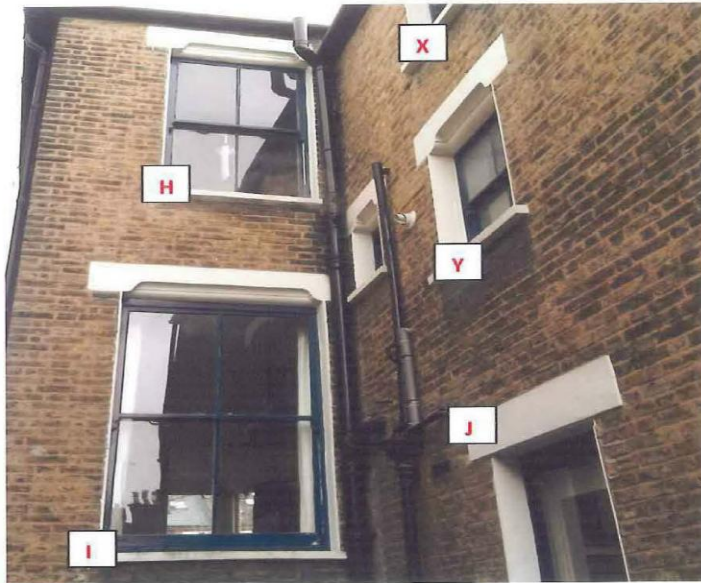
Clearly labelled photograph of side elevation even where tricky to see in its entirety.

PICTURE 2

[H]
REAR FIRST FLOOR
BEDROOM

[I]
REAR
GROUND FLOOR
LOUNGE

[J]
REAR LOWER
SIDE KITCHEN
(SEE PICTURE 5)
DOCUMENT 3



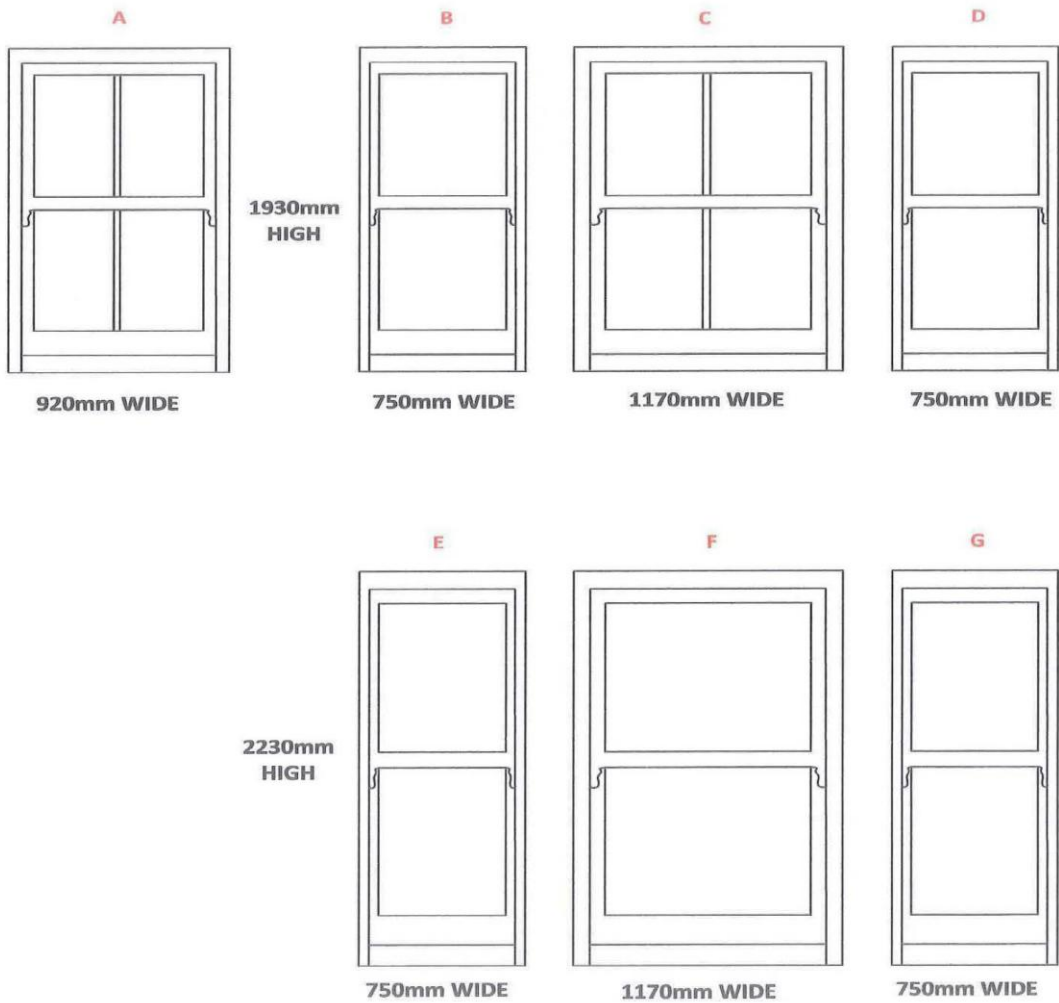
PICTURE 3

[X & Y]
WINDOWS X & Y
NOT TO BE
REPLACED & NOT
INCLUDED IN THE
APPLICATION

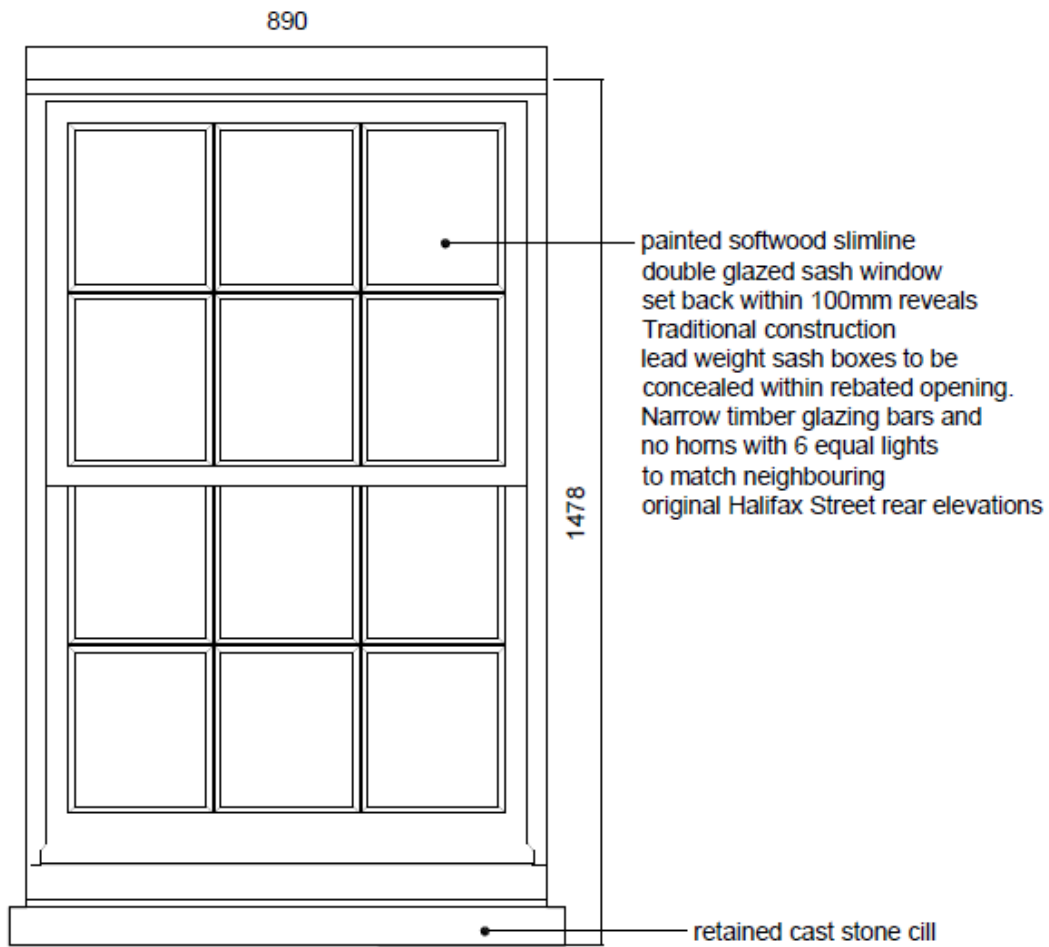


Proposed:

Drawings of replacement windows are cross referenced to photographs with letters and the dimension of the windows are annotated

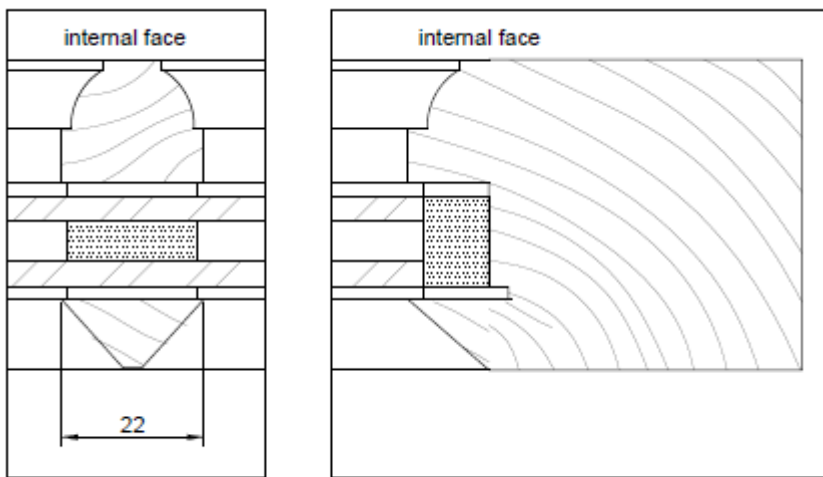


It is also helpful to annotate plans:



ELEVATION 1:10

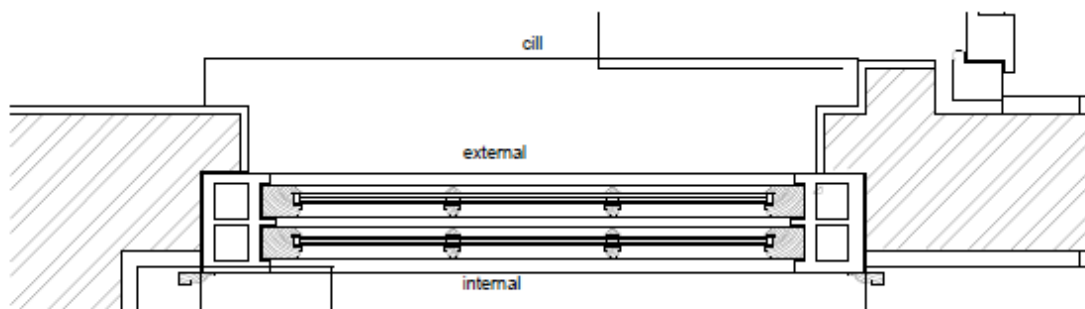
Glazing Bar:



MOULDINGS 1:1

Cross section of sash:

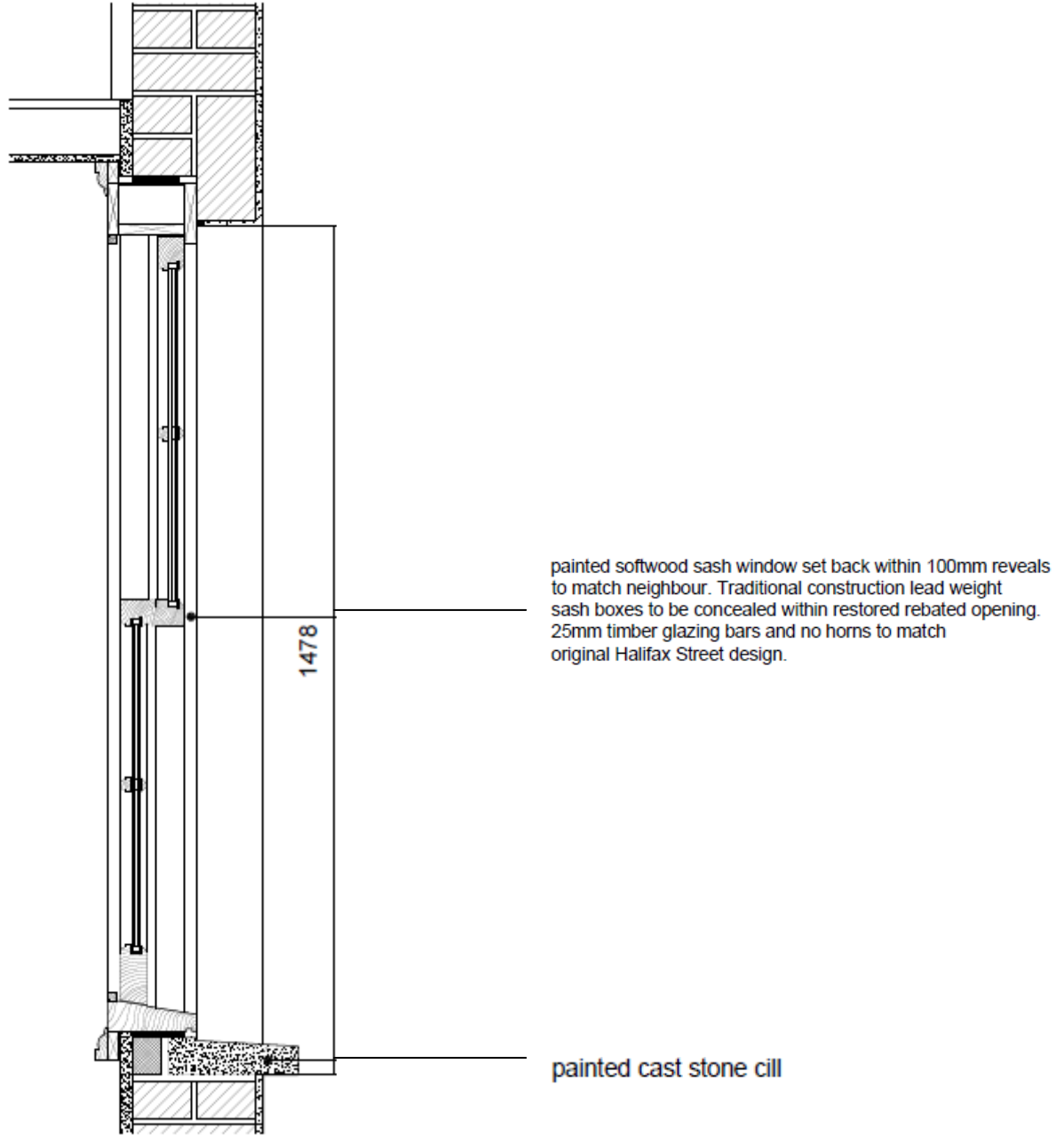
View from above



PLAN 1:10

Cross section of sash:

View from side



painted softwood sash window set back within 100mm reveals to match neighbour. Traditional construction lead weight sash boxes to be concealed within restored rebated opening. 25mm timber glazing bars and no horns to match original Halifax Street design.

painted cast stone cill

SECTION 1:10