

Deptford High Street North – Works due to start on 6 February 2017

In February 2016 we consulted with you about the Deptford High Street scheme. We took on board as many of your concerns and suggestions as possible when you had your say about the project.

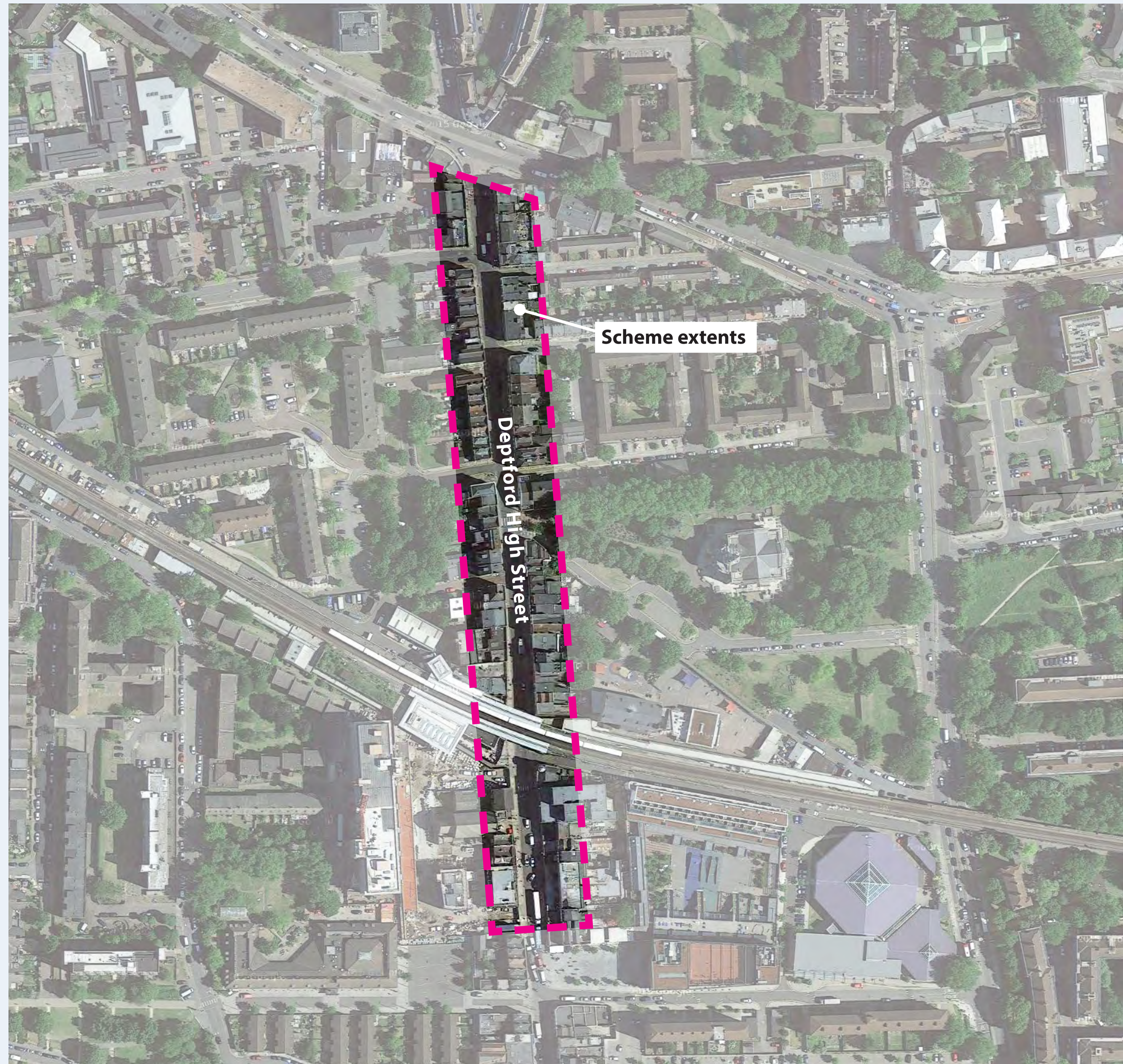
Following the success of the improvements to the south end of Deptford High Street, Lewisham Council wanted to continue the momentum of the current regeneration programme in the town centre to re-invigorate the northern section. We've been working in partnership with TfL (Transport for London) to help us deliver improvements to the north end of the street. In December 2016 TfL confirmed that our funding is now secured. The Council now have to deliver the scheme quickly to meet the funding requirements.

Design consultants from Project Centre Ltd have developed designs for improvements between the junction with Evelyn Street and Giffin Street considering your views. The scheme aims to provide a better environment to accommodate the existing population and the future population and to sustain the town centre, shops and businesses.

To help you to understand the changes a question and answer sheet is available to tell you more about the scheme and how it may affect you and how we tried to include your suggestions. There is also a drop in session at Deptford Lounge Foyer between 3pm and 7pm on Wednesday 1 February 2017 when you can come and talk to the project team and the contractor.

Once delivered, the street will:

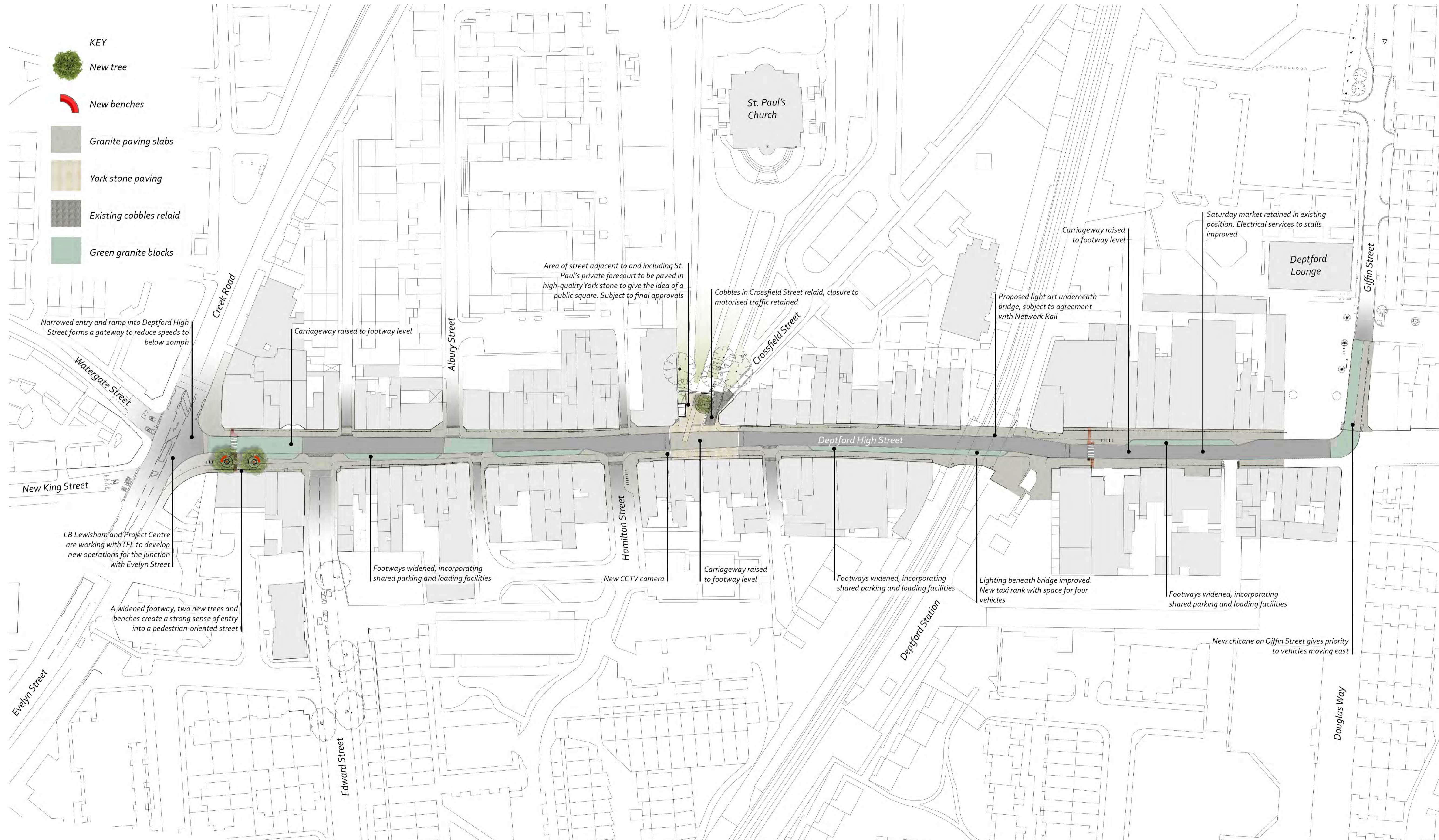
- Be more pedestrian friendly, encouraging more sustainable travel modes (cycling and walking).
- Feel less cluttered and safer.
- Conserve and enhance the historic character of the street through appropriate upgraded paving.
- Improve accessibility by providing level crossing areas at junctions.
- Operate with the Council's introduction of a borough-wide 20mph speed limit, help reduce vehicle speeds and improve safety at junctions.
- Improve controlled parking and loading in designated bays by extending the Restricted Parking Zone to this end of the street as well.
- Improve parking for Blue Badge Holders.
- Assist the local economy by improving power facilities for the Saturday Market between Giffin St and the station.
- Will provide an art element with lighting to Deptford Railway Bridge.



Deptford High Street North – What the Design will look like



Lewisham



Deptford High Street North – The defined Design Vision

The scheme aims to improve the street and enhance connections between North and South Deptford.

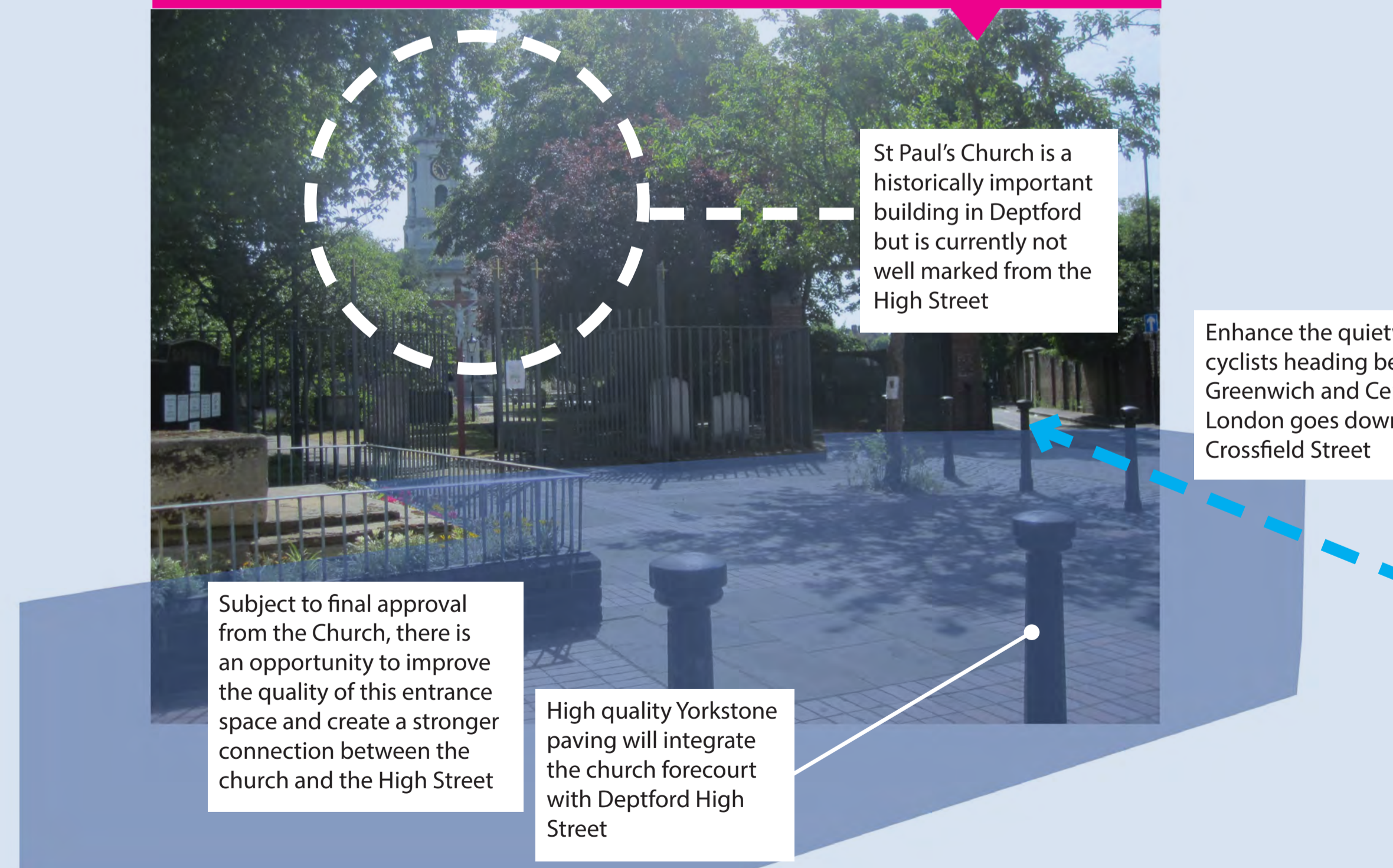
These are the objectives it will meet:

- Improved wider footways
- Connection with future proposed crossing improvements at the junction with Evelyn Street to provide a safe, attractive and direct route between the river and the High Street.
- Trees and seating to the Evelyn Street junction.
- Creation of a pedestrian and cycle friendly environment that caters for the expected increase in people using the street.
- Traffic calming measures.
- Improvements to parking provision and improvements for Blue Badge holders.
- Introduction of a new taxi rank below the railway bridge to serve the High Street and Deptford Station.
- Artistic lighting under the railway bridge.
- Enhanced design retention of heritage elements at the S Paul's and Crossfield St junction.

View of Deptford High Street looking North from Albury Street



View of St Paul's Church from Deptford High Street



Sketch view of Deptford High Street indicating locally widened footpaths and new paving materials



Example of parking and loading bays designed to be part of the footpath



Example of historical style setts to allow easy access and non-slip surface



Example of wider pavements, decluttering and high quality paving on Kensington High Street



A new type of pedestrian priority crossing could be used to help improve accessibility and priority over road junctions

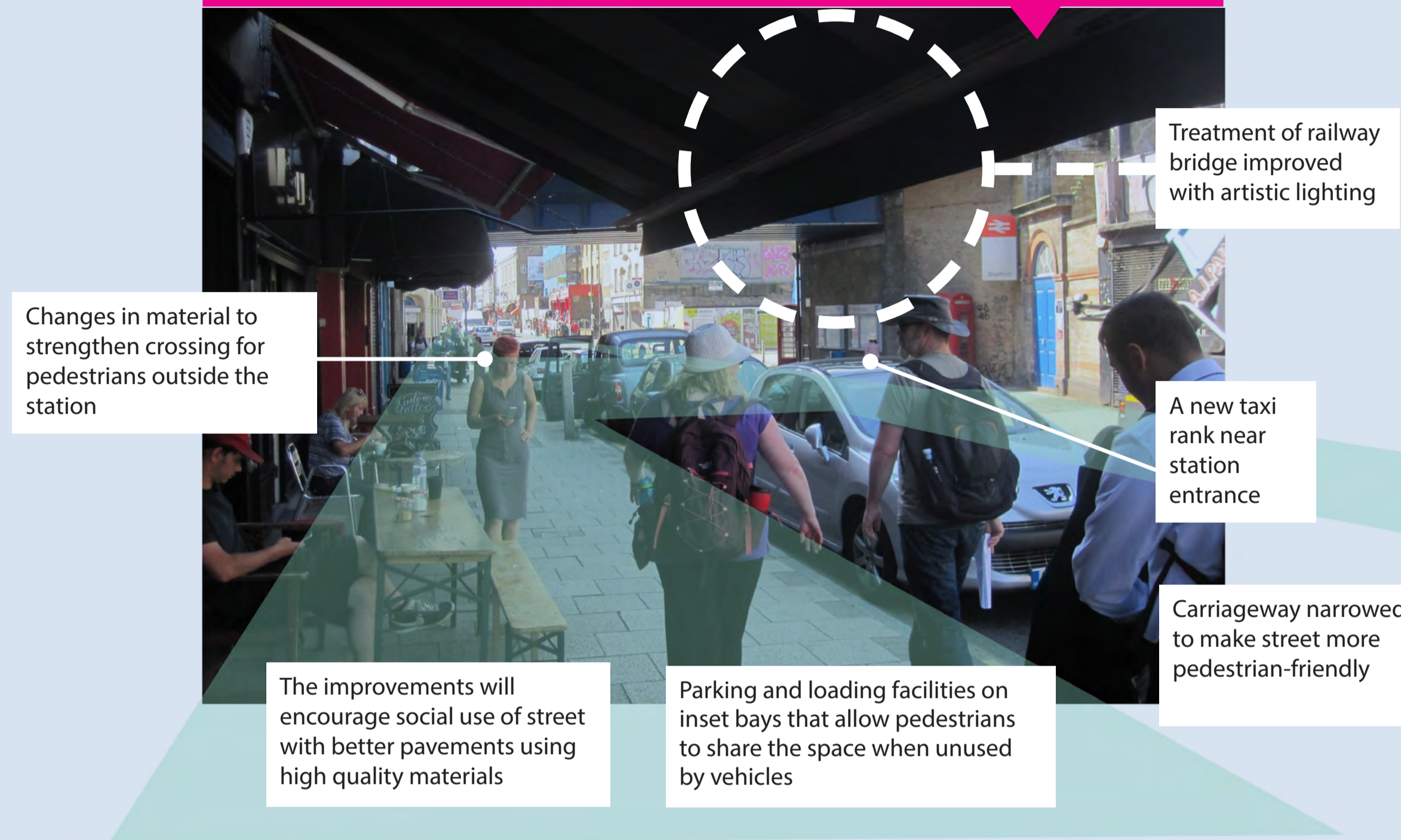


Deptford High Street North – The defined Design Vision

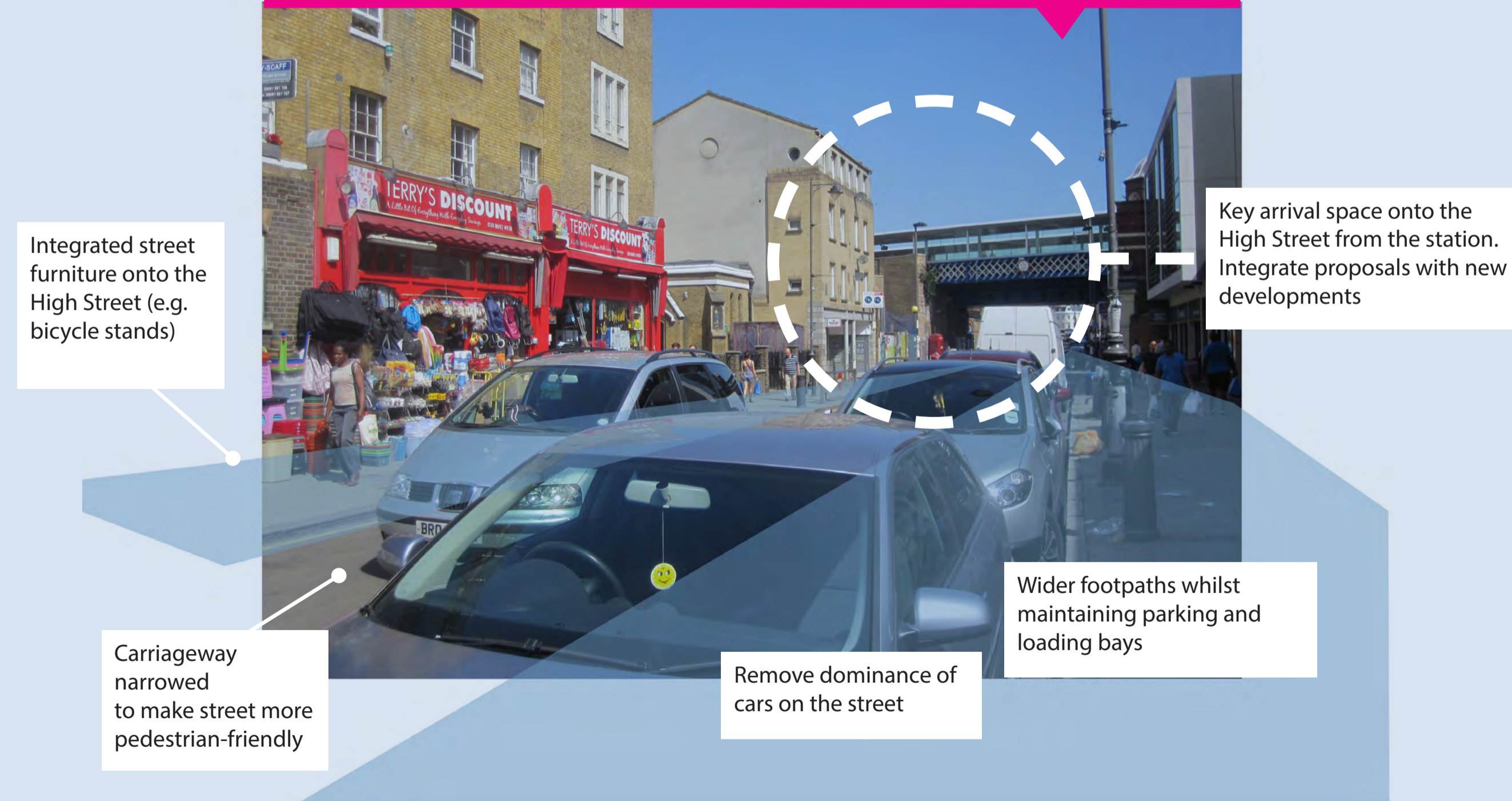
The project will follow the London Mayor's Better Streets agenda, including the following principles:

- Sustainable design: The proposals will enhance the area's townscape quality by reducing clutter and creating spaces to wait and appreciate the environment in contrast to the current unappealing vehicle dominated thoroughfare.
- Holistic approach: Catering for the needs of all users with priority given to sustainable modes of travel.
- Consistency and clarity: The design proposals will draw on the palette of materials used in the southern section of Deptford High Street in order to provide consistency and a continuous recognisable link.
- Understanding the requirements: Key Council and other local stakeholders groups have been consulted about the proposal.
- Design for people. The proposals have an emphasis on footway improvements and respond to desire lines.
- Reduction of crime. The proposals are designed to create a safe and secure environment through improving lighting and sightlines. Encouraging the night time economy will introduce greater natural surveillance.
- Recognition of local context and distinctiveness. The proposals seek to enhance the character of the High Street as well as allow for the existing independent retail offer and the interaction of shop front stalls with the street.

View of Deptford High Street looking South towards the railway bridge



View of Deptford High Street from Iceland Supermarket looking North



Sketch view of Deptford High Street indicating locally widened footpaths and new paving materials



Example of introducing street furniture by reducing carriageway width

Example of increasing footpath width to benefit pedestrian environment



Example of better road crossings, wider pavements and quality materials



Example of traditional paving used to improve the frontage of this church

Example of high quality granite kerbs and setts

