

A Safe Lewisham

A Plan for 2018-19

Signed off:

March 28th 2018

Forward

London is a place of great opportunity and Lewisham plays an active role in being a part of our great city. However in this last year I can honestly say that the regularity of knife crime affecting Londoners has caused me grave concern and sadness. This year is the 25th anniversary of Stephen Lawrence's murder and the tears that have been shed by so many since this time across London for those killed, injured and impacted by violence in our society cannot be left unheard or normalised. We all need to play our part in any way we can to prevent and stop these tragedies.

In Lewisham we recognise the drivers for youth violence and have taken an effective approach to safeguard and support our children, whilst ensuring a proportionate enforcement response tackles those who are driving the criminality and violence. However there is more to do across all aspects to reduce the exposure to violence as well as the direct violence. Adverse childhood experiences has a traumatic impact on the development of the child's brain. This, as well as societies response to violence is what Lewisham will focus on in the coming years. The development of a Trauma informed restorative approach in the community and with some young people recognises the significance of behavioural change through trusted relationships and de-stressing people and places to work at a subclinical level which lead to positive outcomes. Lewisham will continue to develop this model which we believe will have long term positive impact.

The education we provide to children and families about staying safe needs to stretch further than stranger danger and road safety. London children are growing up in an environment where they need to be equipped to ask critical questions and consider safety in respect of Bullying, Healthy relationships, knife crime, drugs and alcohol and online dangers. Lewisham children developed 5 key messages on these 5 areas and these messages need to be repeated continuously so we can collectively support safety for our children.

Hearing from communities that places feel unsafe, that people avoid activities because of fear are all unacceptable. We will be working directly with children and young people to map unsafe places and spaces and work together to make them safe. Everyone should be able to go about their daily lives without fear.

For my whole career I have championed and challenged discrimination where ever I have seen it. Building on the extensive work undertaken by the partnership to date the Safer Lewisham Partnership has agreed to review disproportionality in the criminal justice system in its own right. The importance and relevance of this issue is great and integrating it into other approaches whilst important does not meet the critical challenge required to make a change. Integration, cohesion and challenging discrimination across the board will be our journey.

In the last year the Partnership have achieved much in the area of public protection and safety. There is still more to do. I am confident as we continue to work closely together, developing trusting joint partnerships and listening to our communities we will see a further reduction of crime and build a place that people feel safe, valued and supported.

Cllr Janet Daby
Cabinet Member for Community Safety
Chair of Safer Lewisham Partnership

About this document

The Crime and Disorder Act 1998 as amended by section 97 and 98 of the Police Reform Act 2002, places a requirement on Community Safety Partnerships (CSP) (In Lewisham, the Safer Lewisham Partnership) to develop a three year Crime and Disorder Strategy which sets out how crime and Anti-Social Behaviour will be tackled

An additional responsibility is also placed on Community Safety Partnerships to produce a Strategic Assessment to ensure emerging community safety trends are captured, and priorities are refreshed where necessary.

The Annual Plan outlines the main priorities for the Safer Lewisham Partnership, which have been identified through the Strategic Assessment.

Lewisham Council and the Safer Lewisham Partnership have a statutory obligation to analyse crime and disorder problems in the borough and agree priorities for a given financial year where the Partnership will focus most of its resources and activity.

The following documents and information provides further context:

London Police and Crime Plan 17-21

London Knife crime action plan – 2017

VAWG Plan 17-21

VAWG Local Assessment Profiles 2017

Domestic Abuse Story Board - 2018

Bedfordshire university review – contextual safeguarding and risk 2017

Missing, Exploited and Trafficked Strategy - 2016

Met police Drugs Strategy – 2018

Lewisham Children and young person's plan – 2015- 2018

Table of Contents

Forward	1
About this document	2
A Safe Lewisham –A Plan for 18-19	4
The Lewisham Picture	5
10 Key Fact	6
Joint actions that made a difference in 2017/2018	7
2018-2019 Direction of Travel	8
Violence	9
Local MOPAC Priorities	10
Gender Based Violence	11
Peer on Peer Abuse.....	12
Tackling Drug dealing 2016 - 2017.....	13
Other Crime.....	14
The Community Voice	15
Big Questions to make a difference	16
How do we have less violence in our society?	17
How do we shape a safer place and space?	18
How do we understand and ensure negative bias is reflected upon and protected against?	19
What’s changed	20
Finance and Resources	21

A Safe Lewisham –A Plan for 18-19

Lewisham is a vibrant and dynamic borough. Lewisham is a part of London and one of the most diverse local authority areas in the country. Lewisham's 13.4 square miles are criss-crossed with some of the region's busiest roadways and rail networks providing transport routes to and around the capital for people from all over the south-east. In terms of connectivity, Lewisham is just five minutes from London Bridge and 15 minutes from Charing Cross.

A rich architectural heritage provides character to the built environment, this includes award winning buildings such as the Laban Centre, the Horniman Museum, Deptford Lounge and Glass Mill Leisure Centre, which are landmark features for visitors and residents alike. The borough also showcases several beautiful and award-winning parks including: Hilly Fields, Ladywell Fields, Telegraph Hill and Manor House Gardens.

Lewisham is home to over 306,000 people. In terms of population size, it is the fifth largest Inner London borough and the 13th largest in London. Between the 2001 and 2011 Censuses, the population of Lewisham increased by some 30,000. By the time of the next Census in 2021 the population of the borough is forecast to reach 321,000 and 357,000 by the time of the 2031 Census. Lewisham is comprised of some 133,000 households (forecast to reach 139,000 by 2021 and 156,000 by 2031).

In terms of the demographic profile, children and young people make up about 25 per cent of Lewisham's population, whilst those aged 65 plus comprise some 10 per cent. Over the years Lewisham's population has become increasingly diverse; currently some 54 per cent of residents describe themselves as White, compared to 46 per cent who are of Black & Minority Ethnic heritage. Residents from more than 70 nationalities, covering five continents, make their home in the borough.

Nearly 212,000 Lewisham residents are of working age (16 to 64), of which some 60 per cent of those in employment travelling outside the borough each day to work. Within Lewisham, the borough's employment rate of 80 per cent is above the London and Great Britain averages (73.7 per cent and 74.5 per cent respectively). In terms of occupations, a higher percentage of Lewisham residents (57 per cent) are employed in managerial, professional, associate professional and technical occupations compared to London (55.1 per cent) and Great Britain (45.6 per cent).

In terms of the borough's commercial base, nearly 95 per cent of all businesses in Lewisham, are micro-enterprises employing 0-9 staff. This is above the London average of nearly 91 per cent. By contrast, some 5.1 percent of Lewisham businesses employ 10 to 250 staff, compared to an average of 9.1 per cent for London.

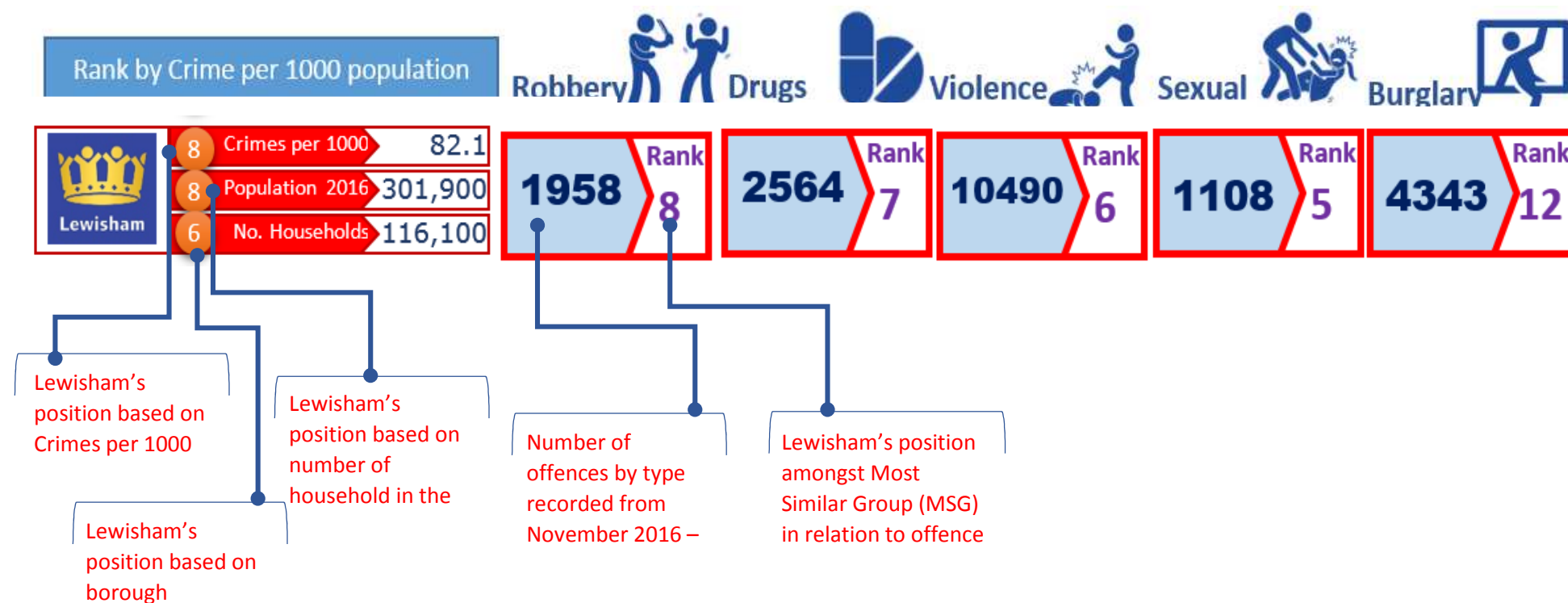
There are strong partnerships established over many years in the Borough which provide a strong foundation for effective working as well as constructive challenge of services and response. The approaches taken in Lewisham in respect of Public protection and safety are amongst the best in London and the country including the model for Missing, Exploited, Trafficked children, the work on County lines drug dealing and the Trauma informed approach both within Youth Offending and the community setting.

The Lewisham Picture

Sources: | Office of National Statistics

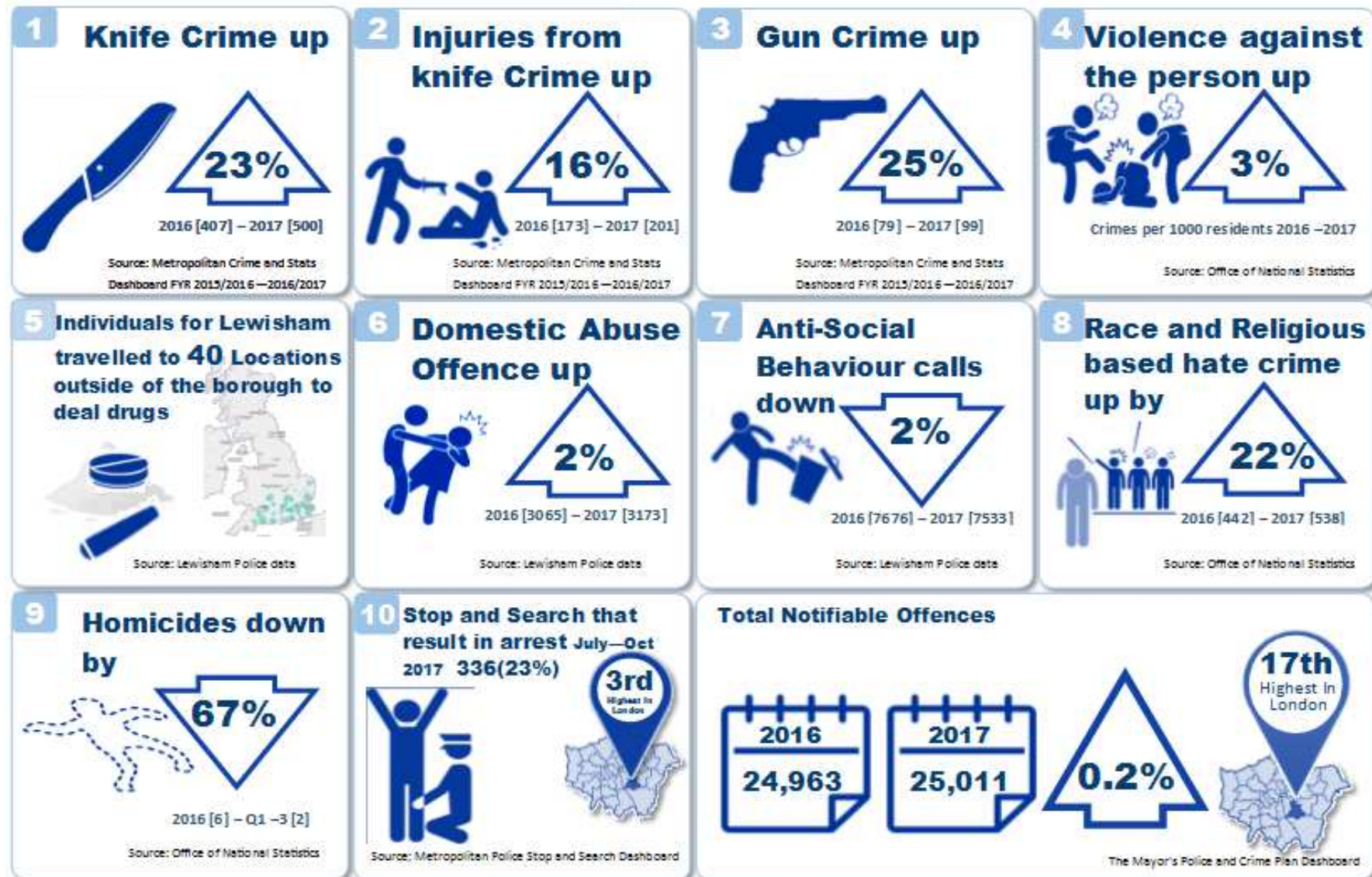
The 5 key offence types have been considered and ranked compared to the most similar groups.

Issues of violence and related offences continue to be relatively high compared to other parts of London and will require continued focus.



10 Keys Fact

The following provides a snapshot. Whilst the Total Notifiable offences has remained relatively static indicators linked to violence continue to be of concern for Lewisham (with similar trends across London).



Joint actions that made a difference in 2017/2018

Stop the violence campaign was launched

5 key messages for consistent focus and language

Trauma-informed practice - Lewisham YOS is recognised by the DFE as 'a trauma informed service' meaning it is a relationship and trauma based model delivered as a direct intervention and as a workforce development program.

Launch of the Universal schools safety programme

Supporting children on how to keep safe considering issues of knife crime, drugs, bullying, online dangers, and healthy relationships

Raising awareness and encouraging multi-layer dialogue about the issues. This has included community groups, voluntary and charitable sector and multi faith groups.

Significant partnership operations taking many individuals off the streets who were grooming and trafficking children for drug dealing

Community based trauma informed model. Developing a geographical model to help distress an environment that has been impacted by trauma. Building a trusted adult peer support model helping each other in the community with issues and concerns.

The development of parent Hubs working with community based services like the youth services to build trust and confidence



In setting the **18 – 19 direction of travel** a number of aspects have been taken into consideration. The Partnership is adopting an approach that challenges and ensures that issues are not normalised asking difficult questions to tackle the hardest issues.

There are a number of drivers for the approach which include:

- The London Mayors Police and Crime Police 2017-2021 which has been adopted by Lewisham as the 4 year statutory Strategy. (Strands include A better police service, A Criminal Justice System for London, Keeping children and young people safe, VAWG. Hate crime and counter terrorism).
- Regional work being undertaken in respect of the London Landscape, devolution options and future projections in respect of harm and vulnerability and any regional and sub-regional commissioning across agencies
- Reviews in respect of disproportionality and cohesion including Baroness Young, MP David Lammy, and Dame Louise Casey
- Findings from reviews being undertaken by central and regional government and partners including MET police drugs strategy, London VAWG refresh, DIP review, IOM review, Youth Custody prison reform etc.
- Inspection outcomes and identified learning from Domestic Homicide Reviews and Serious Case reviews that relate to the Partnership
- Information from our local strategic needs assessment and local residents survey Lewisham's local assessment profiles (LAP)

The Borough partners and residents have identified the following as being essential for our collective approach:

- Reduction in harm and vulnerability being critical as part of an overall prevention, intervention and enforcement approaches
- Reducing fear, harm and Revictimisation is critical.
- Considering contextual and geographical risks.
- Improving trust, confidence and satisfaction in this agenda
- Considering systemic approaches that link to agency changes whilst improving outcomes and impact
- Using data and analysis which is single, collective and cumulative whilst also considering future foresight modelling

For 18-19 the Partnership seeks to answer further the following:

- How do we have less violence in our society?
- How do we shape a safer place and space?
- How do we understand and ensure negative bias is reflected upon and protected against?

Violence

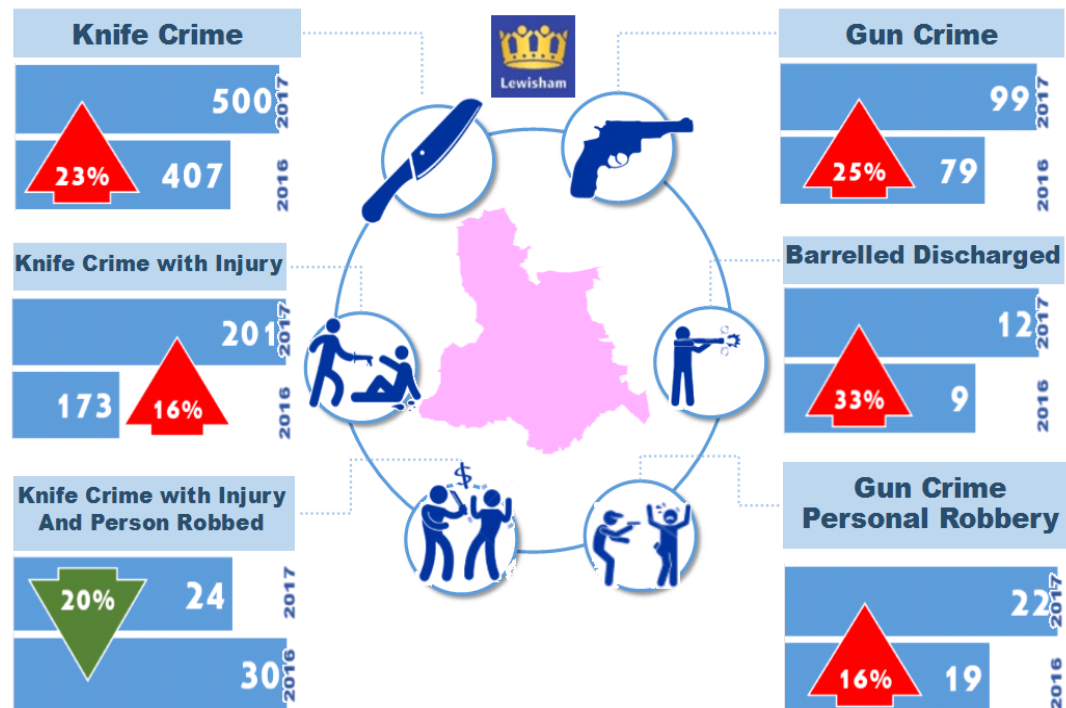
Sources: Metropolitan Crime and Stats Dashboard Financial Year 015/2016—2016/2017

Violence was the single focus for the Partnership in 2017/2018. Areas of peer on peer abuse, gender based violence, and other violence were prioritised recognising the significant harm.

However violence remains a significant concerns with its rise in Gun and Knife crime. Knife crime for under 25 has however seen a 2% reduction which suggests the approach adopted to tackle serious youth violence (including under 25 year olds) is having an impact

Knife crime includes all knife crime including intimidated knife and domestic and non-domestic.

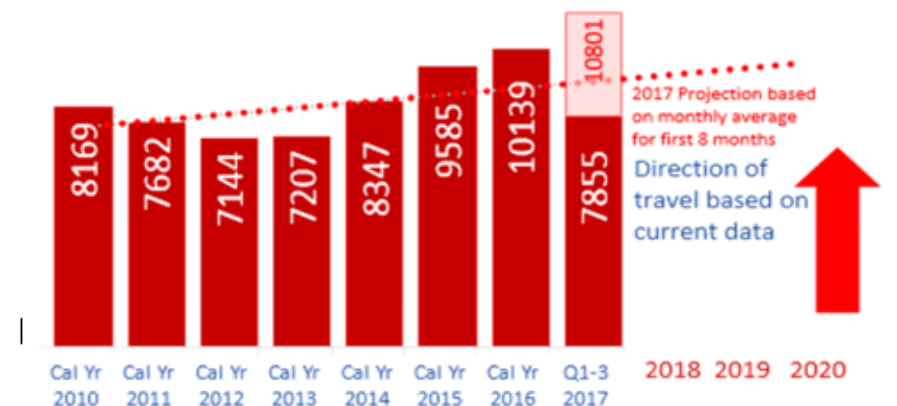
Gun and Knife Crime



Violence against the person (Crimes per 1000)

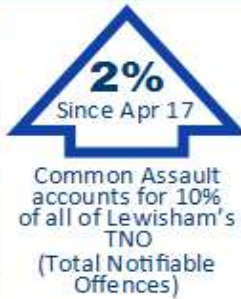


7 Year Comparison of Violence Offence



Level of offending from the two chosen volume crime priorities has remained unchanged. However, offending based on a 12-month rolling basis has remained higher than the long-term average since April 2017.

Common Assault



2nd
ranked crime type in Lewisham

Key Areas of Common Assault offending



Accounting for 32% of all Common Assault offending in Lewisham.

Monthly offending trends



Rolling 12 month offending trends



Non Domestic Abuse VWI



5th
ranked crime type in Lewisham

Key Areas of Common Assault offending



Accounting for 35% of all Common Assault offending in Lewisham.

Monthly offending trends



Rolling 12 month offending trends



Gender Based Violence

Sources: Athena | Lewisham Police Incident Reports

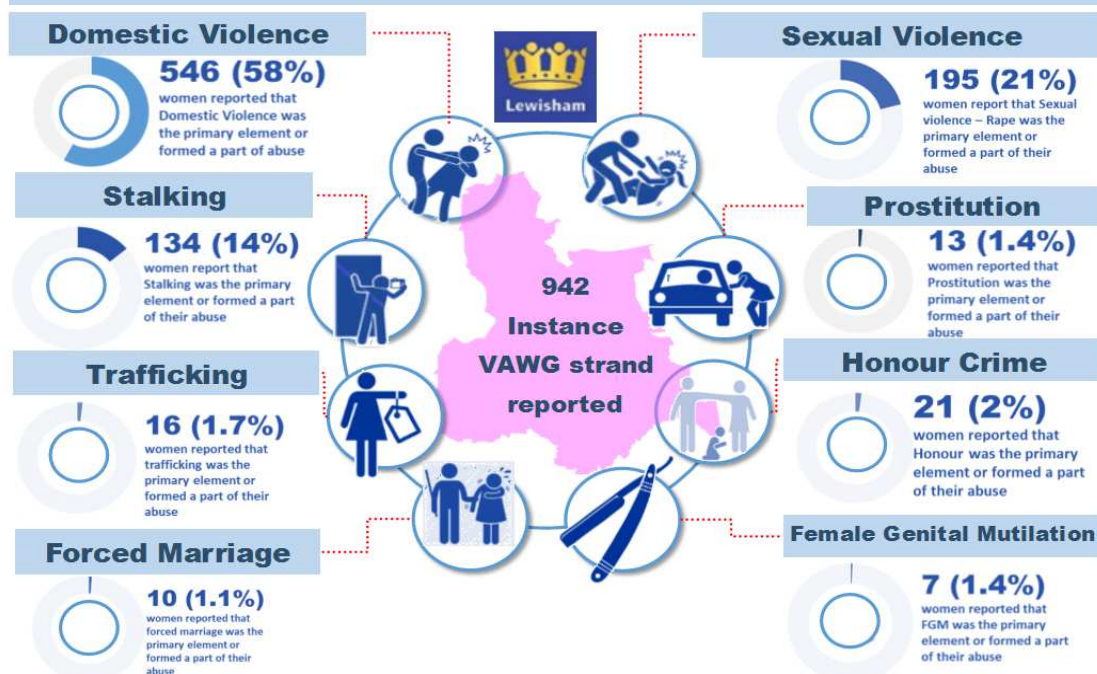
A detailed analysis has been undertaken on all 8 strands of the Violence against Women and Girls agenda alongside a detailed deep dive into Domestic Abuse in 17/18.

The focus on Domestic abuse and Sexual violence due its volume remains a focus, however through greater understanding of the other strands increased actions is required across all the strands.

Through the deep dive it highlighted that 4 out of 10 incidents related to male victims with psychological and violent incidents were predominantly within family relationships not intimate relationships.

In the period analysed 368 children witnessed Domestic abuse with almost half witnessing violence with girls and under 5s being significantly represented. The impact of witnessing violence causes significant trauma.

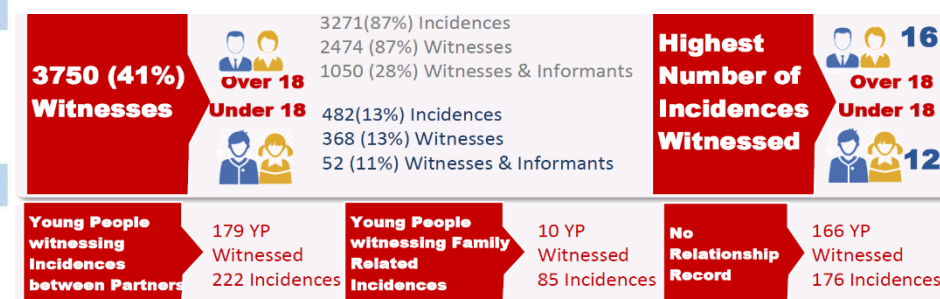
VAWG Strand Data Feb 2016 – Aug 2017



Lewisham domestic abuse incidences 2016



Under 18 Witnesses – Summary of findings



Peer on Peer Abuse

Sources: Lewisham Police

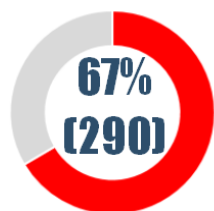
This was a specific focus in 2017/2018 with greater understanding of the drivers including Trafficking of Children to deal drugs of exploitation both sexual and emotional.

Considering these aspects together linking Missing, Exploitation, Trafficking & serious violence including Drug Dealing has enabled an approach focusing on safeguarding, Risk, Harm and Vulnerability.

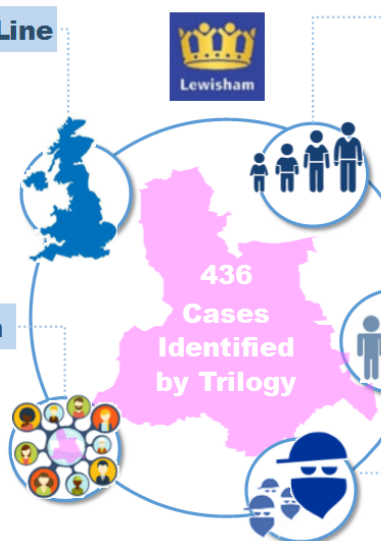
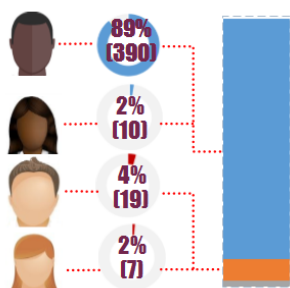
The issues of drug dealing in London and out of London has been a significant driver of violence and harm to young people. With clear multi agency grip, support and proactive approaches there is some evidence of shift in these issues.

Serious crime cohort (Trilogy) active as of Jan 18

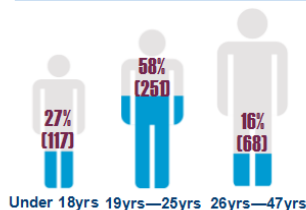
Involved in County Line



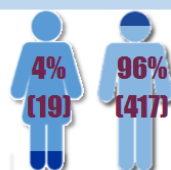
Ethnic Composition



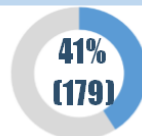
Age Breakdown



Gender Composition



Involved in Gangs

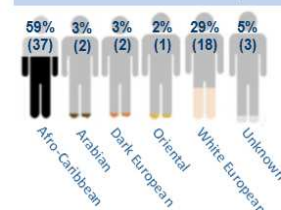


Child Sexual Exploitation Summary 2017

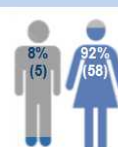
CSE Reports 2017



Ethnic Makeup



Gender Breakdown



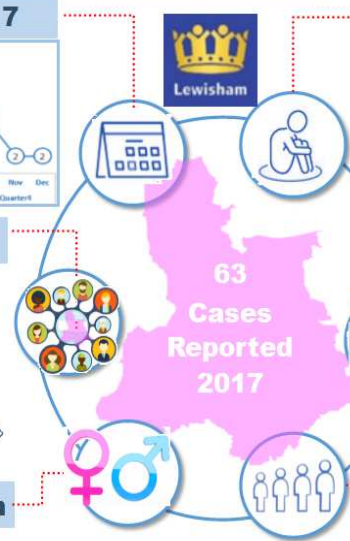
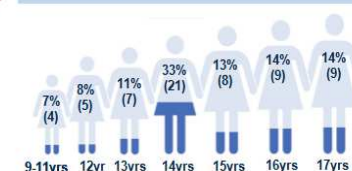
CSE Levels



Education Status



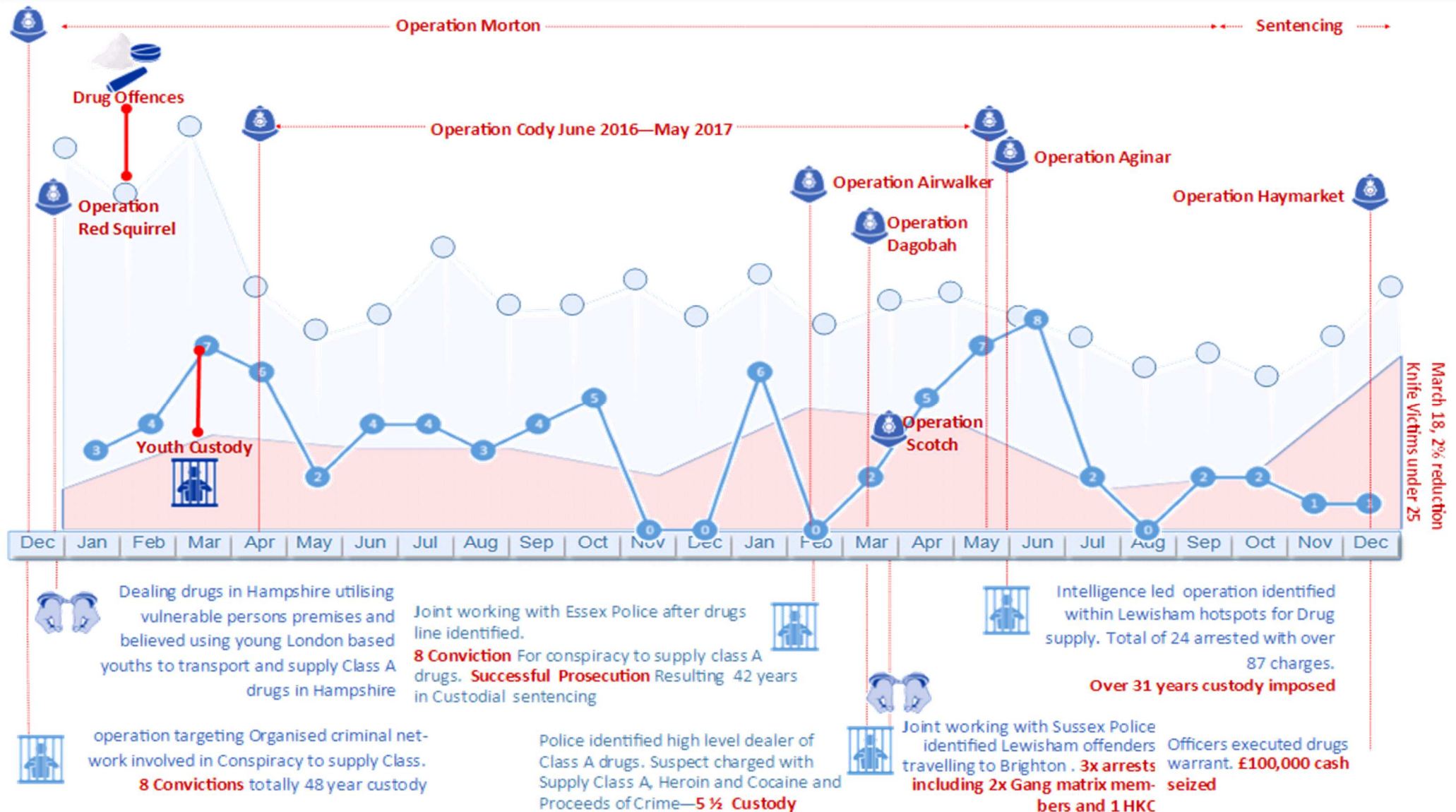
Age Breakdown



Tackling Drug dealing 2016 - 2017

Sources: Lewisham Police

The partnership focus on violence related to drug dealing and 'county lines' is outlined below. The multi-faceted approach has shown significant enforcement outcomes for those organising and leading the offending alongside reductions in drug offences, youth custody and knife injury for under 25 year olds. This approach is showing positive short and medium term impacts.

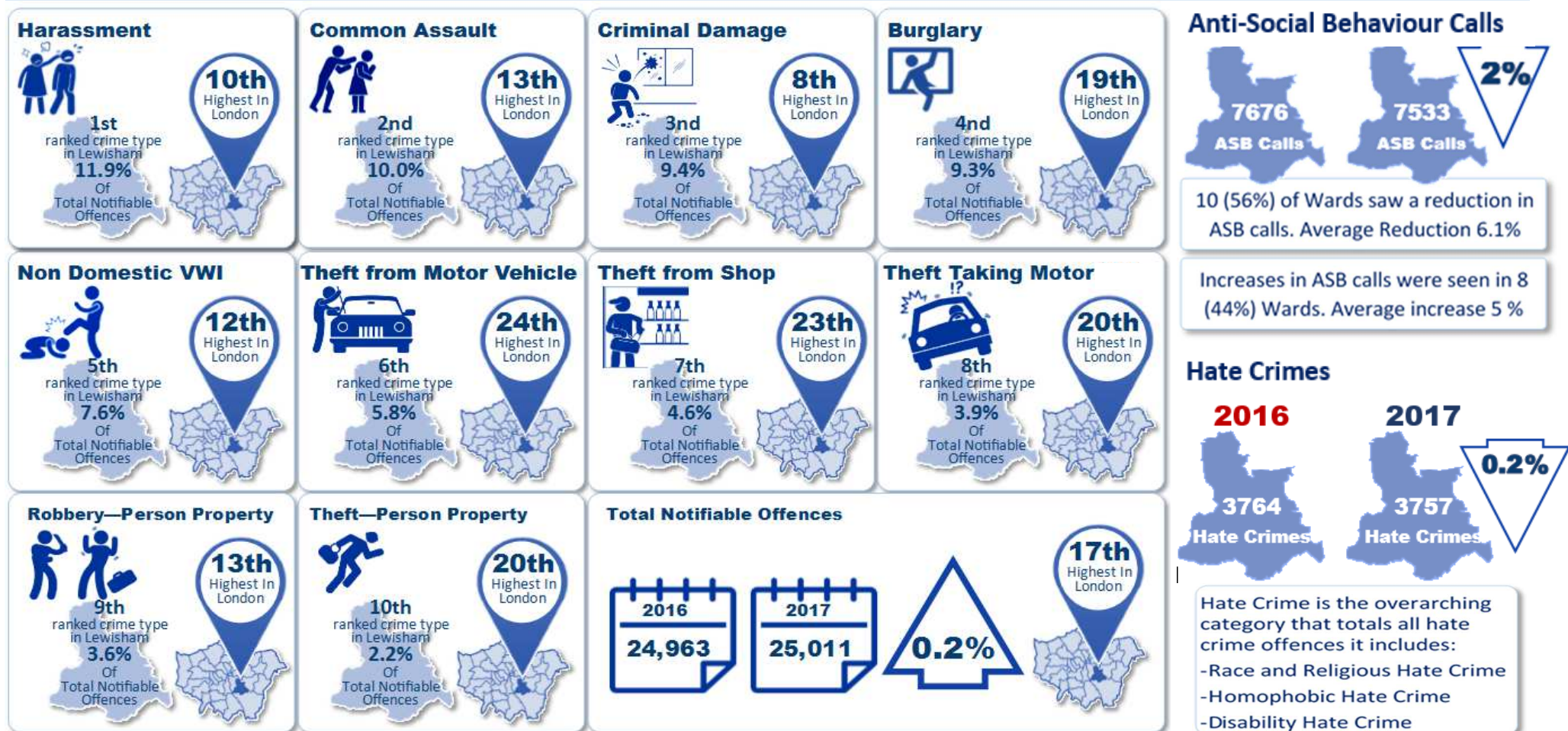


Other Crime

Sources: MOPAC | Metropolitan Crime and Stats Dashboard FYR 015/2016—2016/2017

There are a number of other volume crime types which improvements are being seen in Lewisham. Anti-Social Behaviour and Hate Crime whilst showing small reduction continue to be the focus in making a place safer and early identifiable of disquiet.

Perceptions and a place feeling safe are clear aspects of some these indicators.



The Community Voice

The Lewisham Community is consulted on crime and safety in a variety of ways, including;

The Safer Lewisham Crime Survey 2018

The Lewisham Safer Neighbourhood Board – Focused on young people

Lewisham People's Day 2017

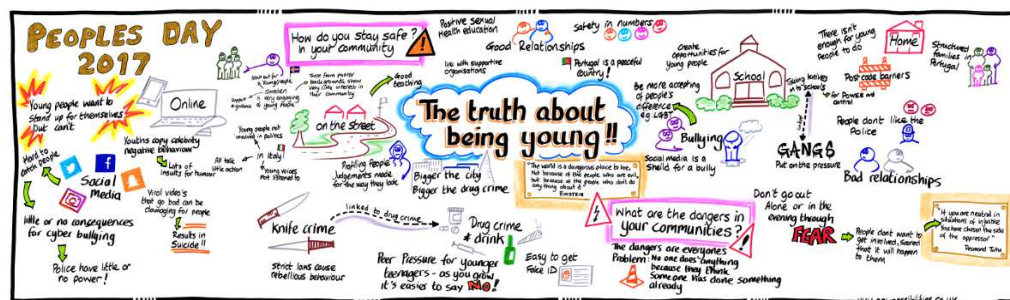
92% of Lewisham People surveyed said they felt very safe or fairly safe during the day, however only **62%** felt the same at night

26% had been a victim of crime in the past twelve months

Young people told us that they don't feel safe where they know adults are committing crime, or areas where ASB is taking place. They also feel unsafe in new areas. They do welcome youth clubs and use them but want more accessible youth provision. They are worried that they are seen as they problem in town centres when they travel there to feel safe

Priority Crime Areas identified in the Lewisham Crime Survey

	% Total		% Total
Burglary	37.36%	Sexual related crime	2.20%
Knife crime	19.23%	Other (please specify below)	1.65%
Robbery (theft with violence e.g. mugging)	12.09%	Identity theft	1.10%
Gang related violence	5.49%	Arson (deliberate fires)	0.55%
Drug or alcohol related crime	4.95%	I have no concerns	0.55%
Gun crime	3.85%	Shoplifting	0.55%
Hate crime (race, religion, disability, sexuality)	2.75%	Theft from person (e.g. pickpocket)	--
Vehicle crime	2.75%	Metal theft	--
Domestic Violence	2.20%	[No Response]	0.55%
Physical Assault	2.20%	Total	100.00%



Of those surveyed, **29%** said that they had been a victim of online crime. This could be bank/financial fraud, abuse in texts or online, blackmail or attempts to force someone to become involved in a crime.

Young people told us that there is still a postcode issue in London and safe spaces can have borders

12% of those surveyed said that they had been a victim of hate crime in Lewisham. And of those victims, they experienced hate crime based on;

	% Total
Age	1.07%
Disability	1.07%
Gender or gender identity	0.53%
Race, ethnic origin, nationality or national origins	7.49%
Religion and belief	2.14%
Sexual orientation	3.74%
[No Response]	83.96%
Total	100.00%

Young people told us that they want to be able to talk to parents and adults more generally, they want to see more police around (particularly in schools) but also want to know who to talk to when in trouble. They feel safer when adults are around. E.g. on buses

Of those surveyed

52% felt that crime in Lewisham had increased
4% felt that crime in Lewisham had decreased
20% felt that crime in Lewisham had stayed the same

Young people told us that they want more opportunities to join groups like the police and fire cadets. They want to have safe spaces to be young people and experience different and new opportunities. They also told us that they would like to see programmes/projects targeted at engaging young women specifically

We asked young people or those who are parent/guardian/carers of young people what they felt YP were most vulnerable to in Lewisham. They said;

	% Total
Serious violence	13.62%
Street robbery	24.68%
Sexual exploitation	5.96%
Cyber bullying	12.77%
Radicalisation	0.85%
Domestic abusive relationships	2.13%
[No Response]	40.00%
Total	100.00%

A large pink opening quotation mark.

How do we have less violence in our society?

How do we shape a safer place and space?

How do we understand and ensure negative bias is reflected upon and protected against?

A large pink closing quotation mark.

BIG QUESTIONS TO MAKE A DIFFERENCE

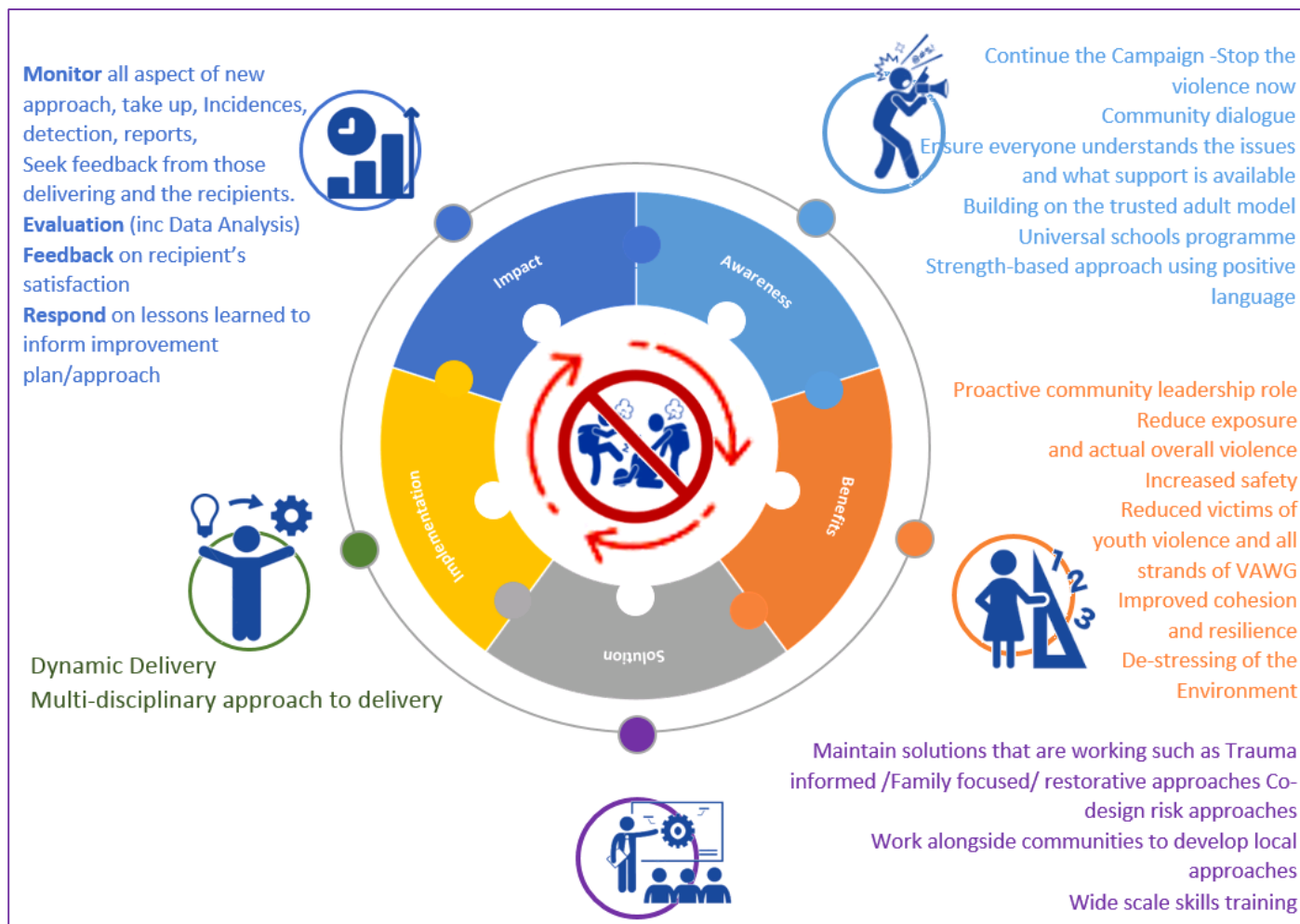
To understand and then provide clear actions for impact a model of approach has been developed for Lewisham.

The approach adopts a joint focus, joint approach and joint learning is embedded throughout.

The 5 aspects of Awareness, benefits, solutions, implementation and impact are all co-terminus and provides a framework for reflection, innovation, and dynamic learning and delivery.

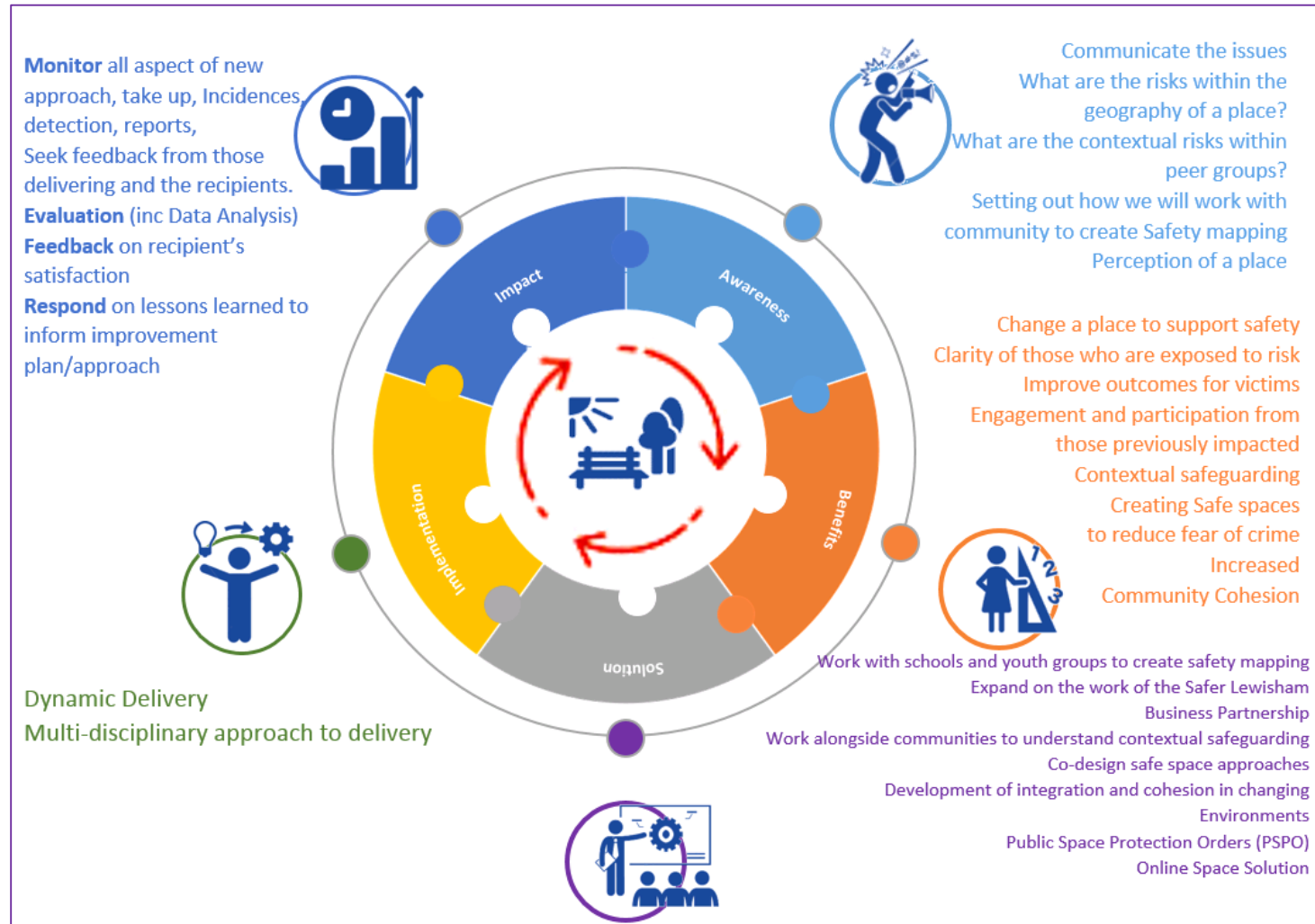
How do we have less violence in our society?

Exposure to and actual violence impact significantly on communities and individuals. Violence covers serious youth violence, peer on peer abuse, gender based violence including domestic abuse. These crimes are high harm as well as contributing significantly to the overall crimes in the borough.



How do we shape a safer place and space?

Research has gradually evolved to recognise the role that contextual, as well as developmental and familial, factors play in the process of adolescent development. The social spaces where young people spend their time is a key area of consideration when developing approaches. As young people explore and assert their independence from family contexts during adolescence, the relationships they form outside of their homes, and the nature of the spaces in which these form, influence their exposure to safety, risk and abuse.

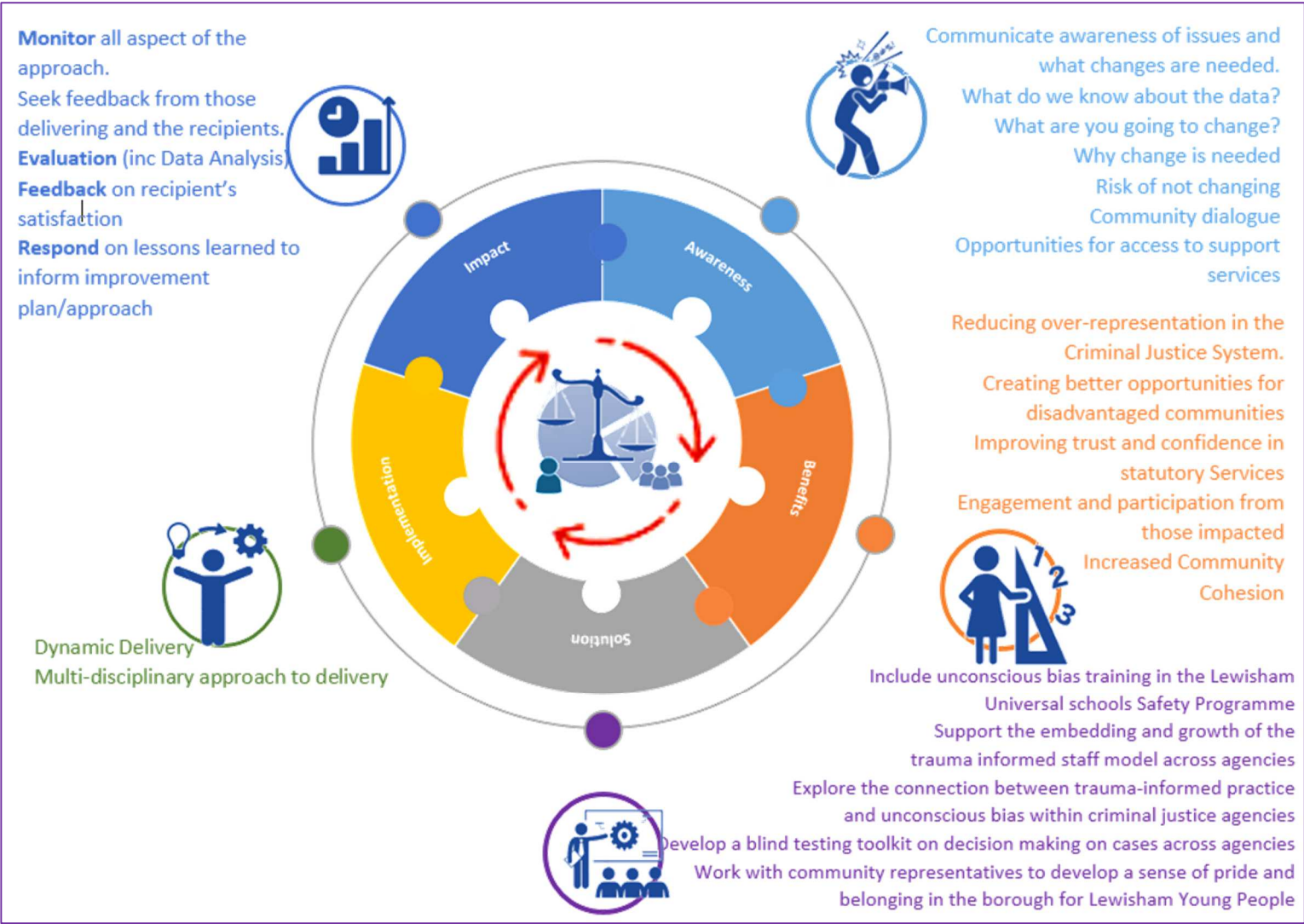


How do we understand and ensure negative bias is reflected upon and protected against?

A number of reports have evidenced the disproportionate impact on aspects of our community through the Criminal Justice system.

It is clear that the language used to describe issues, individuals and agencies needs to be objective and unbiased to ensure that fairness and equality is at the heart of approaches by all.

Social cohesion and integration are at the heart of tackling discrimination with open and regular community dialogue being crucial.



What's changed?

Monitoring Change

VWI non domestic



Knife Crime



Knife Crime Injury



Gun Crime



Sexual Violence



Anti-Social Behaviour



Hate Crime



Burglary



Domestic Abuse Incidences



Stop and Search



Where are our Safe Places?



How do we increase Safe Places?



Training



Blind auditing of Cases



Staff make up in Lewisham



Better user of Social Media



YouTube



Finance and Resources

There have been a number of significant changes in the funding and resourcing for all aspects of the Criminal Justice system both locally and regionally. Mayor of London is the Police and Crime Commissioner, and he delegates this portfolio to Mayor's Office for Policing and Crime - MOPAC. MOPAC not only holds the Met Police to account for delivering its priorities, but it also has overarching responsibilities for crime reduction in the capital and has significant powers to commission services. All partners are committed to working collaboratively and to support funding applications where appropriate to continue the support required to deliver on the areas identified as priorities for 2017-18.

Resources across the partnership have reduced significantly and all agencies are seeing large scale transformation. The changing landscape will impact on deliverability and will need to be reviewed and monitored regularly and closely by the Safer Lewisham Partnership.

To deliver this plan the ability to undertake regular detailed analytical products is essential. This is a significant risk to the Partnerships ability to review performance regularly and understand the impact of the work.

Further copies of the Plan can be obtained on request to the public protection and Safety division within the Council.

If you would like the information in the document translated into a different language, provided in large print or in Braille or the spoken word, please contact us on:

Tel No.: 0208 314 9569

Post: Crime Reduction and Supporting People Division

London Borough of Lewisham, Lawrence House, Catford Road, SE6 4RU

In developing this plan, there has been a series of consultation processes as well as collation of data from a range of sources. These have included an on-line Crime Survey. We would welcome any feedback, suggestions or proposals from individuals or organisations.

For practical advice in relation to community safety and crime prevention, please visit the website:

www.crimereduction.gov.uk

Call Crime Stoppers anonymously on 0800 555 111 to give information about a crime

For information on your local Safer Neighbourhood Teams please visit:

<http://www.met.police.uk/teams/lewisham/index.php>

Stop the Violence Now here: <https://www.lewisham.gov.uk/young-people/staying-safe/Pages/Support-our-campaign-to-end-youth-violence.aspx>

For information on staying safe : <https://www.lewisham.gov.uk/young-people/staying-safe/Pages/default.aspx>