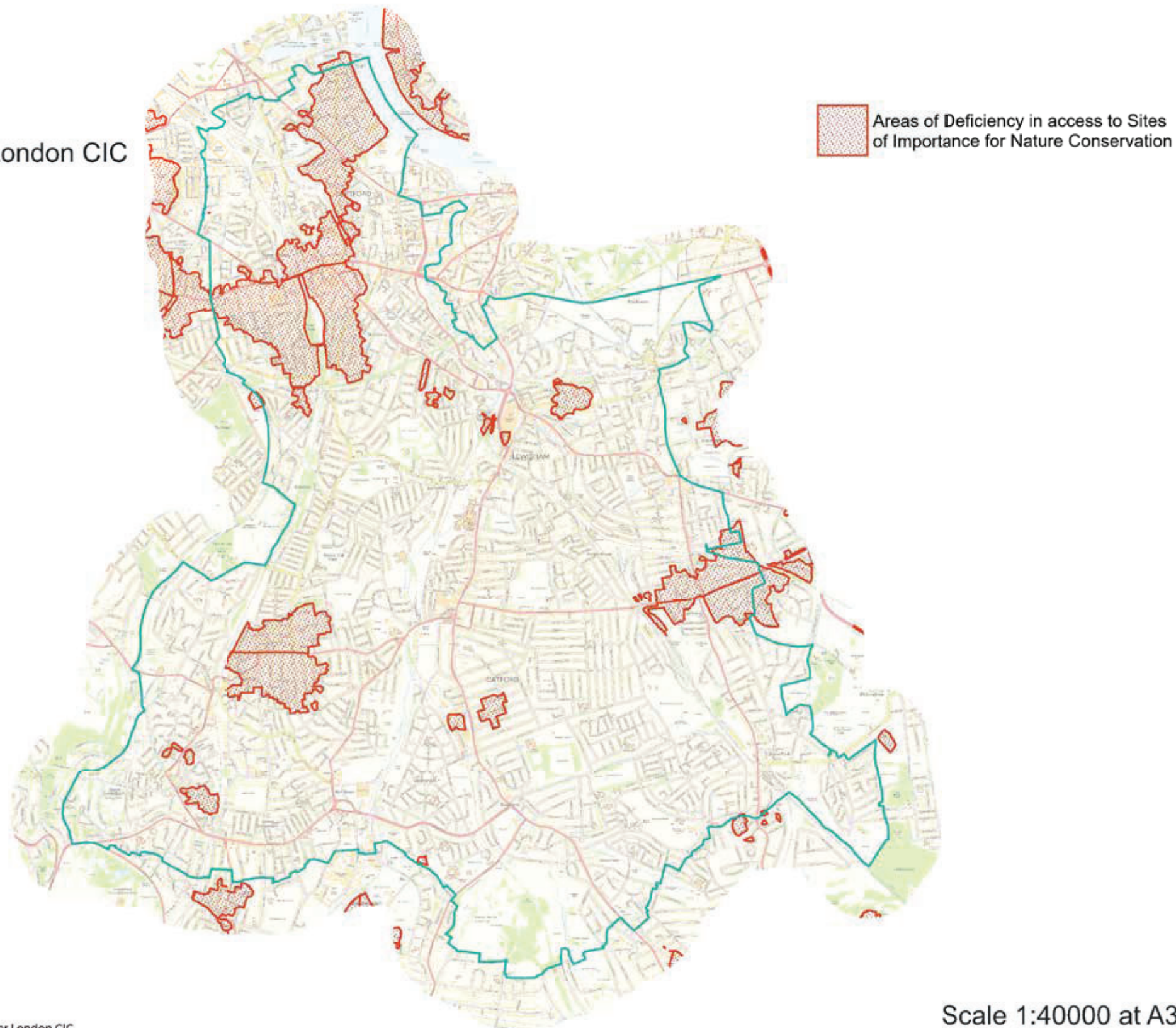


APPENDIX 4 GiGL AREAS OF DEFICIENCY MAPS

APPENDIX 4.1

Areas of Deficiency in access to Sites of Importance for Nature Conservation in Lewisham (Updated Designations)

Produced by:
Greenspace Information for Greater London CIC
(Jan 2019)



The Sites of Importance for Nature Conservation have been identified since 1986 and the categorisation of sites is related to their protected status in the land-use planning system. The boundaries and site grades reflect the most recent consideration of each site. Note that boundaries and grades may change as new information becomes available.



GiGL Greenspace Information for Greater London CIC
the capital's environmental records centre

Scale 1:40000 at A3

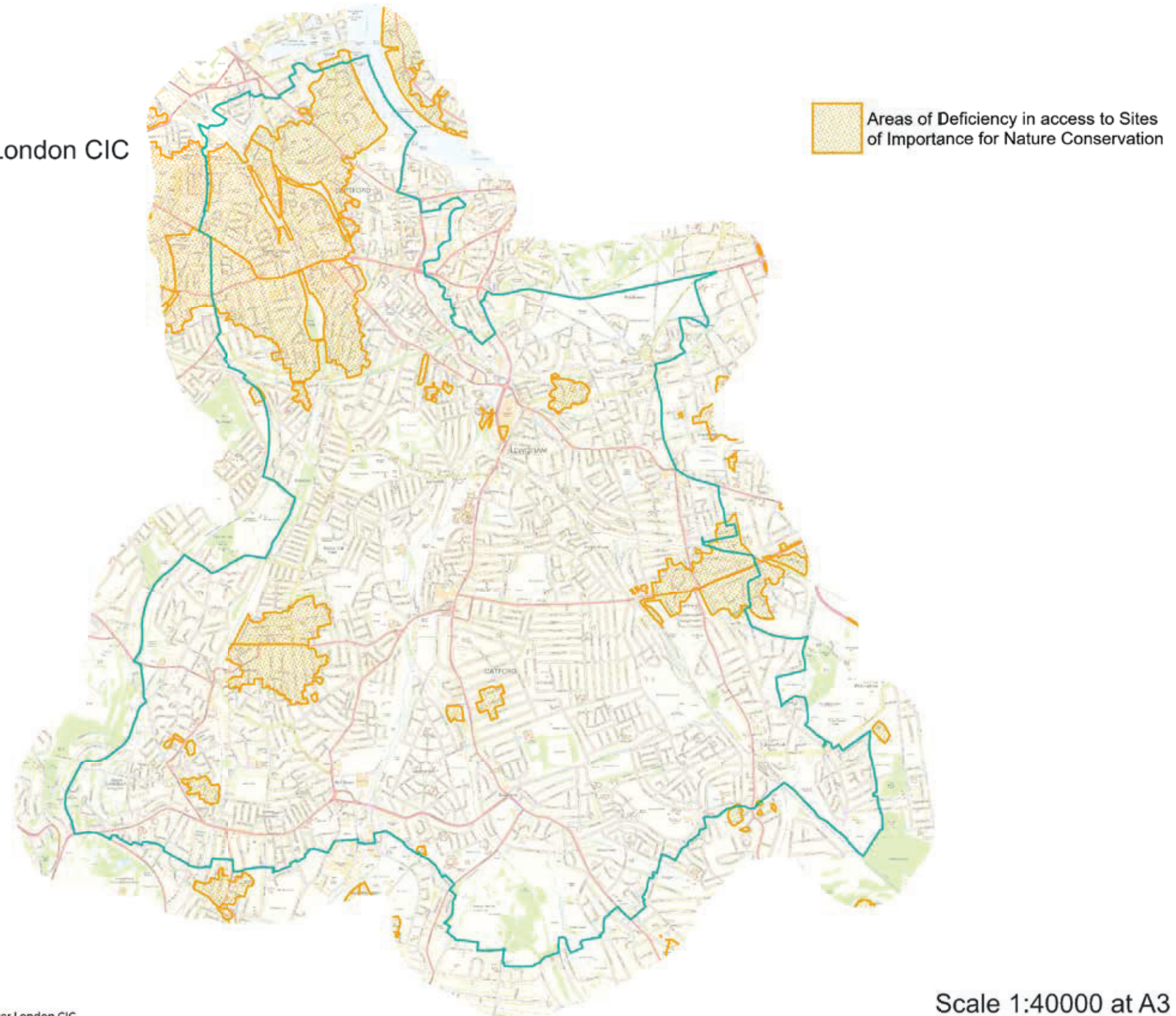
Based upon the Ordnance Survey 1: 10 000 map © Crown Copyright and database right 2019. Ordnance Survey 100032216. GLA

APPENDIX 4.2

Areas of Deficiency in access to Sites of Importance for Nature Conservation in Lewisham (Updated Designations)*

*without Bridgehouse Meadows

Produced by:
Greenspace Information for Greater London CIC
(Jan 2019)



The Sites of Importance for Nature Conservation have been identified since 1986 and the categorisation of sites is related to their protected status in the land-use planning system. The boundaries and site grades reflect the most recent consideration of each site. Note that boundaries and grades may change as new information becomes available.



GiGL Greenspace Information for Greater London CIC
the capital's environmental records centre

Scale 1:40000 at A3

Based upon the Ordnance Survey 1: 10 000 map © Crown Copyright and database right 2019. Ordnance Survey 100032216. GLA

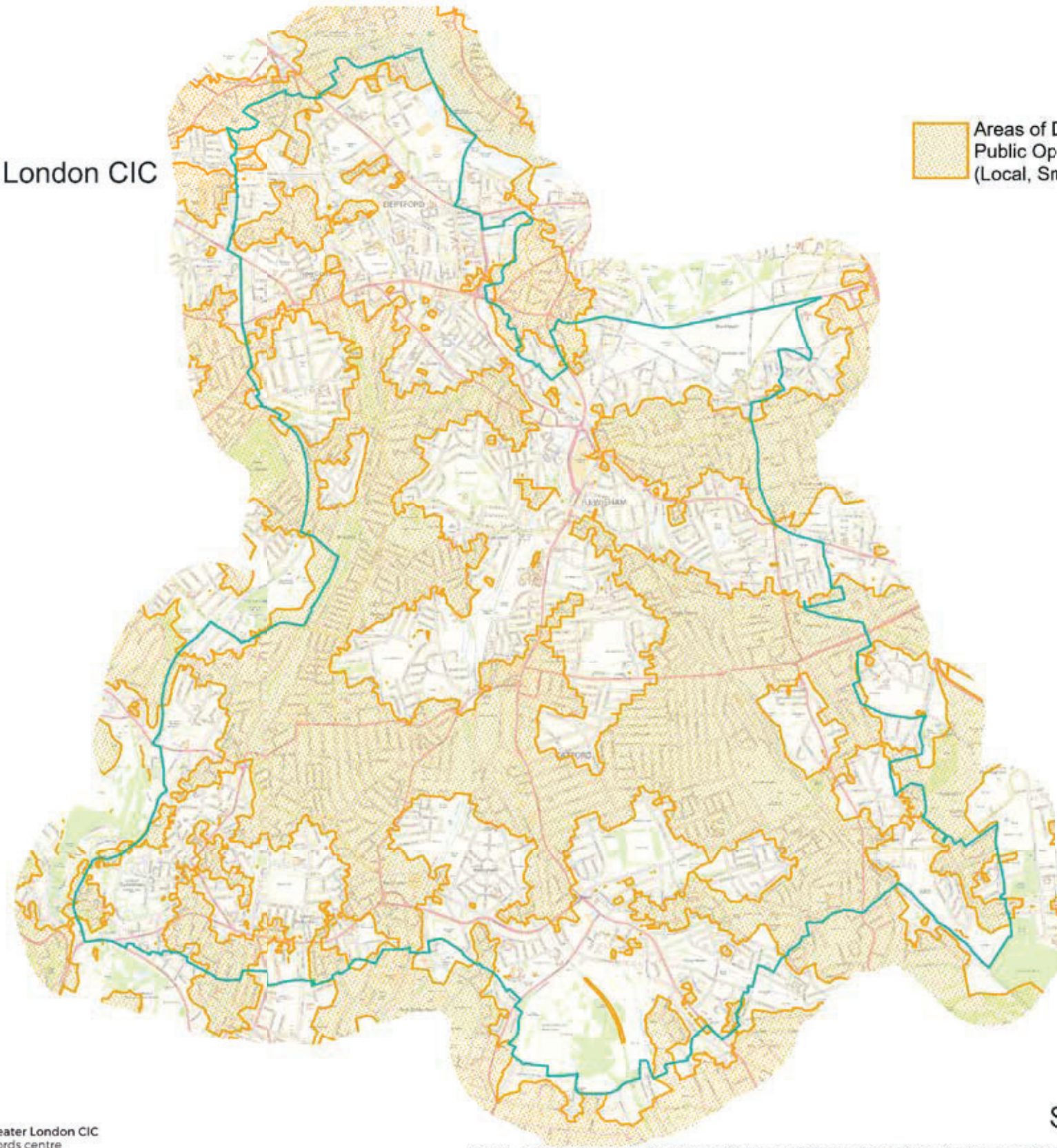
APPENDIX 4.3

Areas of Deficiency in access to Public Open Space (Local, Small & Pocket Parks) in Lewisham

Produced by:
Greenspace Information for Greater London CIC
(March 2019)

 Areas of Deficiency in access to
Public Open Space
(Local, Small & Pocket Parks)

The Public Open Space hierarchy provides a benchmark for the provision of publicly accessible open space across the capital, categorising spaces according to their size, facilities and local importance. Public Open Spaces are categorised according to a site hierarchy documented in The London Plan (Table 7.2) which also sets out a maximum desirable distance which London residents should travel in order to access Public Open Spaces. For Local, Small and Pocket Parks this is 400m.



GiGL Greenspace Information for Greater London CIC
the capital's environmental records centre

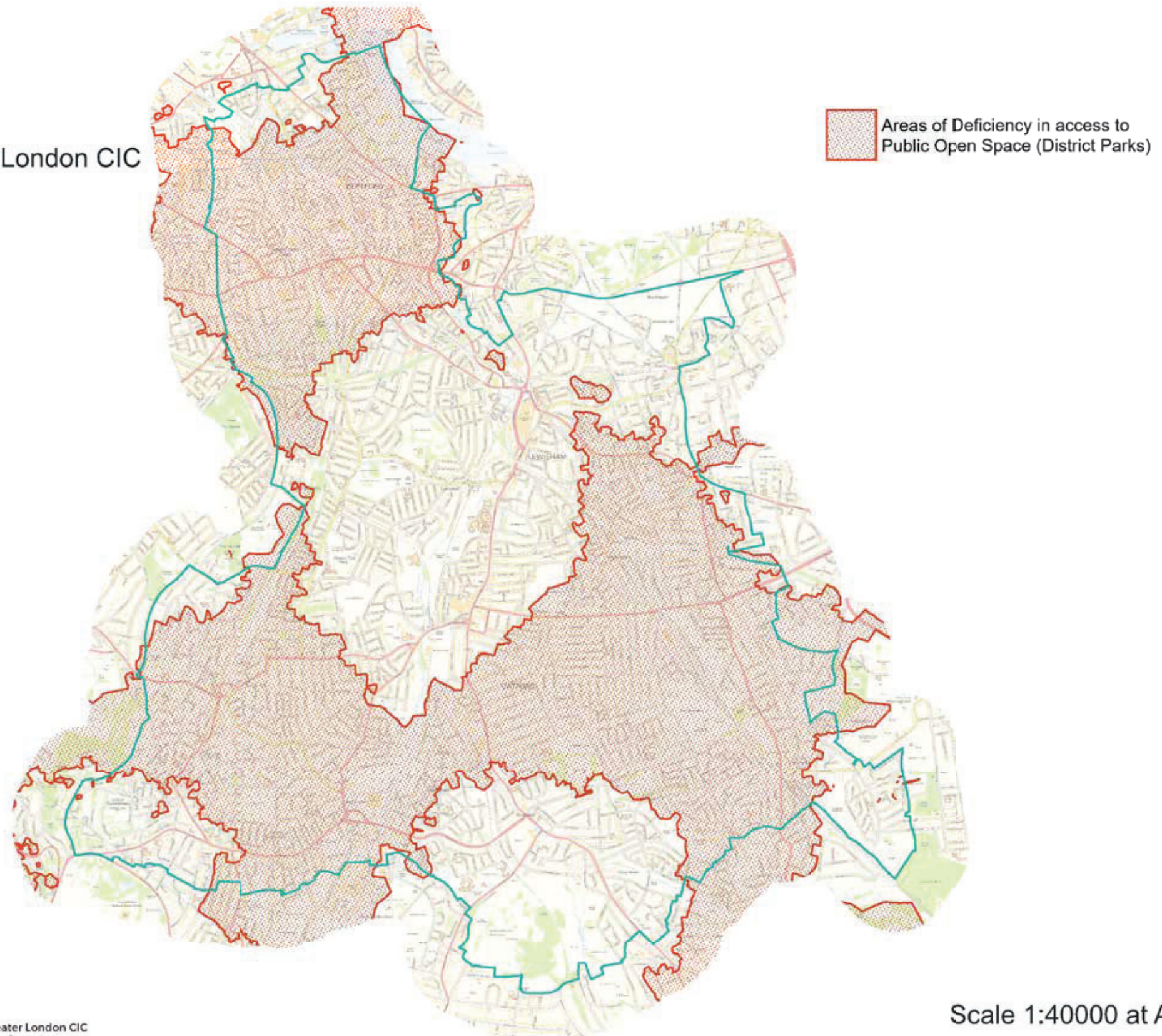
Scale 1:40000 at A3

Based upon the Ordnance Survey 1: 10 000 map © Crown Copyright and database right 2019. Ordnance Survey 100017710.

APPENDIX 4.4

Areas of Deficiency in access to Public Open Space (District Parks) in Lewisham

Produced by:
Greenspace Information for Greater London CIC
(March 2019)



The Public Open Space hierarchy provides a benchmark for the provision of publicly accessible open space across the capital, categorising spaces according to their size, facilities and local importance. Public Open Spaces are categorised according to a site hierarchy documented in The London Plan (Table 7.2) which also sets out a maximum desirable distance which London residents should travel in order to access Public Open Spaces. For District Parks this is 1.2km.



GiGL Greenspace Information for Greater London CIC
the capital's environmental records centre

Scale 1:40000 at A3

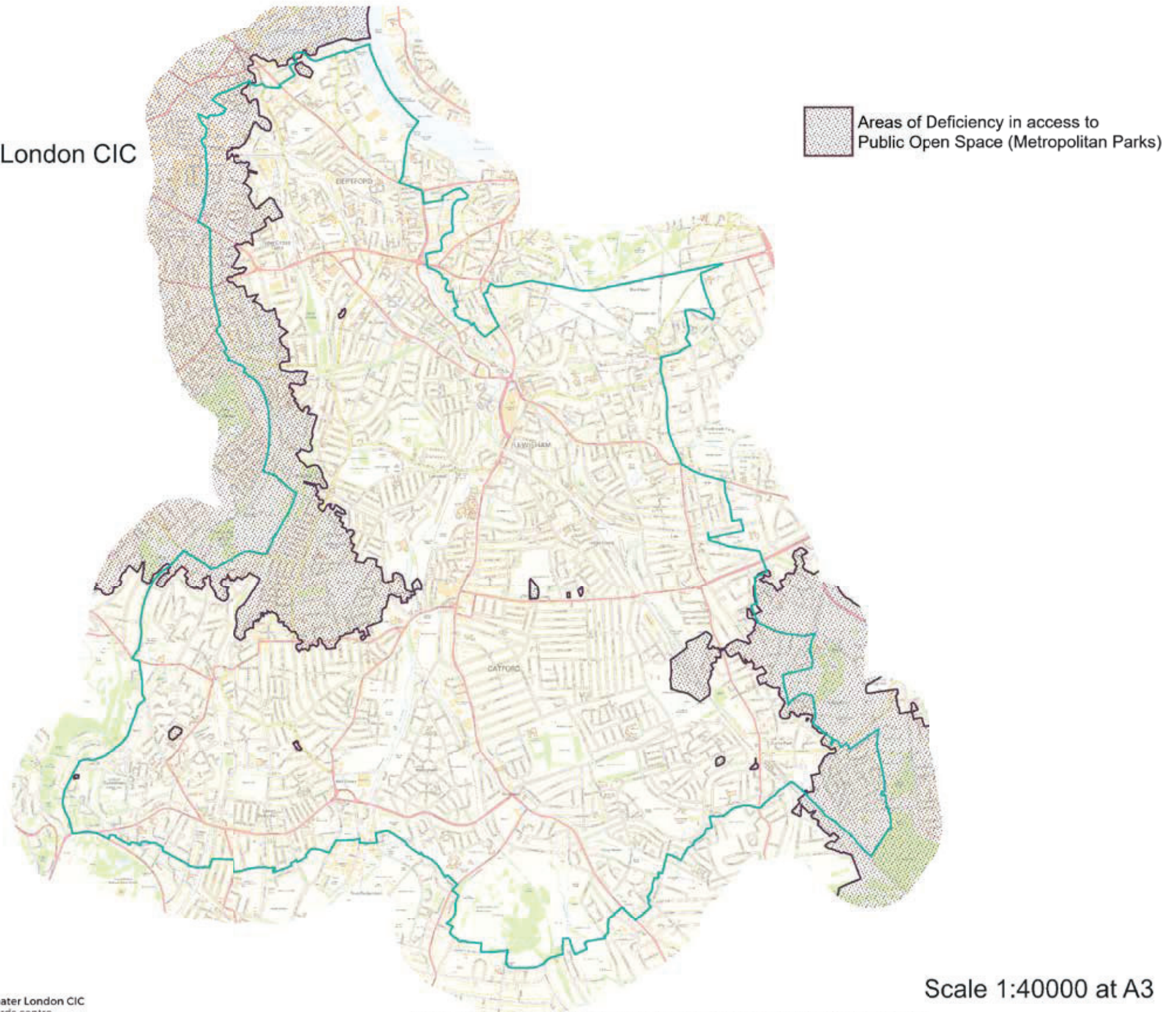
Based upon the Ordnance Survey 1: 10 000 map © Crown Copyright and database right 2019. Ordnance Survey 100017710.

APPENDIX 4.5

Areas of Deficiency in access to Public Open Space (Metropolitan Parks) in Lewisham

Produced by:
Greenspace Information for Greater London CIC
(March 2019)

The Public Open Space hierarchy provides a benchmark for the provision of publicly accessible open space across the capital, categorising spaces according to their size, facilities and local importance. Public Open Spaces are categorised according to a site hierarchy documented in The London Plan (Table 7.2) which also sets out a maximum desirable distance which London residents should travel in order to access Public Open Spaces. For Metropolitan Parks this is 3.2km.




GiGL Greenspace Information for Greater London CIC
the capital's environmental records centre

Based upon the Ordnance Survey 1: 10 000 map © Crown Copyright and database right 2019. Ordnance Survey 100017710.

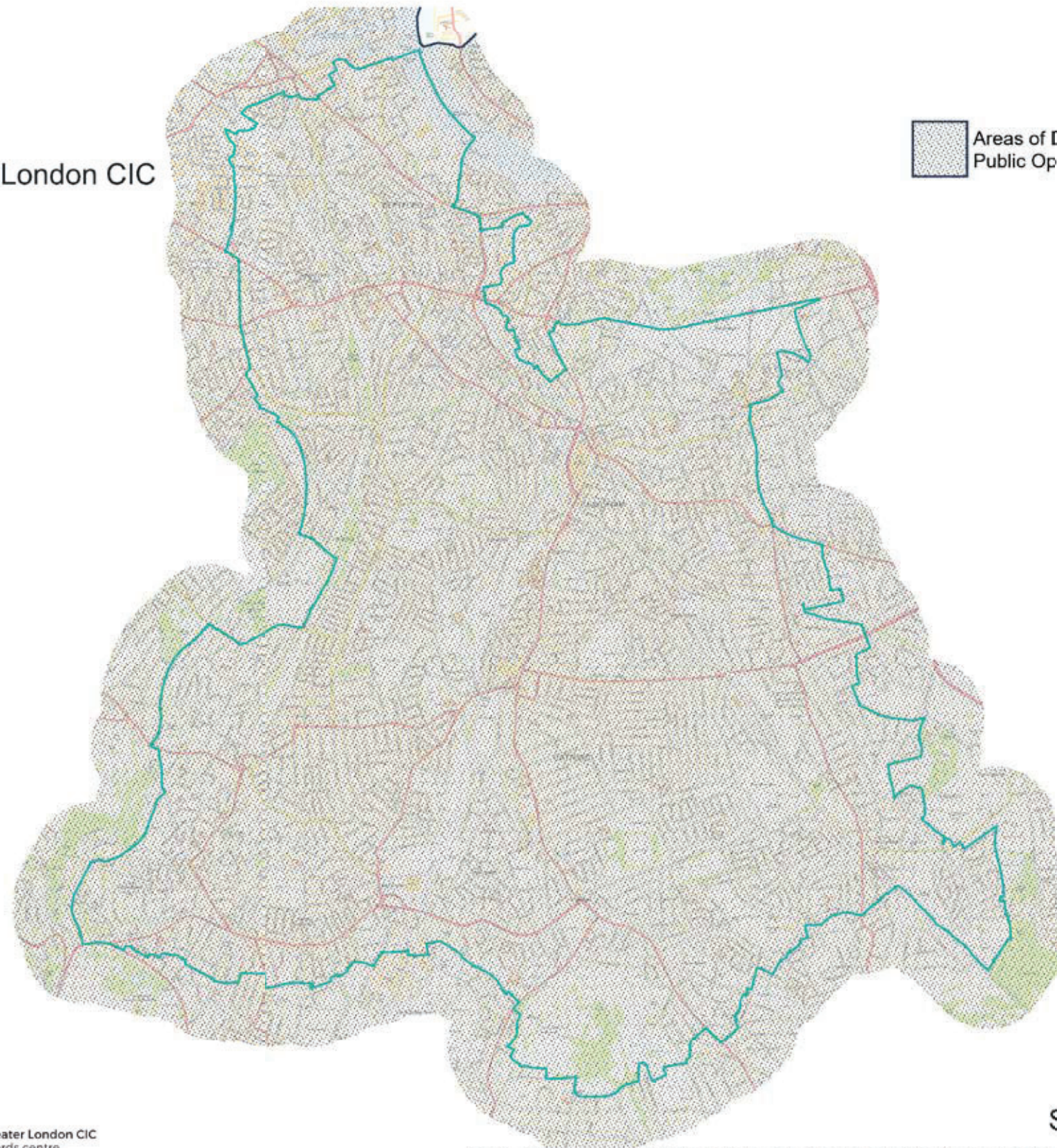
APPENDIX 4.6

Areas of Deficiency in access to Public Open Space (Regional Parks) in Lewisham

Produced by:
Greenspace Information for Greater London CIC
(March 2019)

 Areas of Deficiency in access to
Public Open Space (Regional Parks)

The Public Open Space hierarchy provides a benchmark for the provision of publicly accessible open space across the capital, categorising spaces according to their size, facilities and local importance. Public Open Spaces are categorised according to a site hierarchy documented in The London Plan (Table 7.2) which also sets out a maximum desirable distance which London residents should travel in order to access Public Open Spaces. For Regional Parks this is 3.2 to 8km.



GiGL Greenspace Information for Greater London CIC
the capital's environmental records centre

Scale 1:40000 at A3

Based upon the Ordnance Survey 1: 10 000 map © Crown Copyright and database right 2019. Ordnance Survey 100017710.