

LDPC



**If not now,
then when?**

An Easy Read report from Lewisham
Disabled People's Commission



What is in this report?



What is this report about?

Page 4



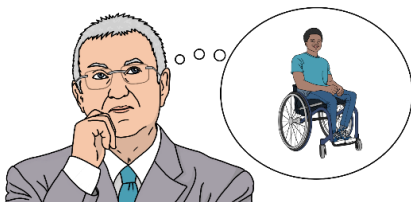
What did we find out?

Page 5



What we want Lewisham Council to do

Page 6



Changing the way the council thinks about and works with disabled people

Page 8



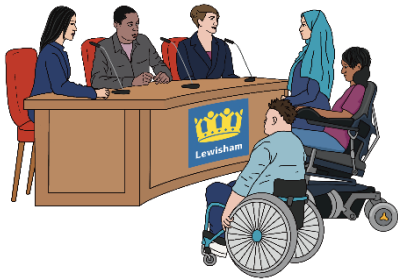
Changes that the council
should make now

Page 9



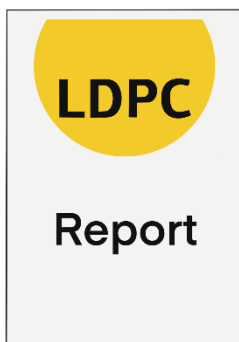
Changes we want the
council to make by 2030

Page 14



Why should Lewisham
Council listen to disabled
people?

Page 18



About this report

Page 19

What is this report about?



We are Lewisham Disabled People's Commission. We are a group of disabled, including deaf, people in Lewisham.



This is our Easy Read report on the **barriers** affecting disabled adults in Lewisham.



A **barrier** is something that makes life hard for disabled people. For example, if you use a wheelchair, steps are a barrier.



People not listening to disabled people can also be a barrier.



It makes it difficult to be involved in decisions that affect us.

Reading this report



You do not need to read the whole report if you do not want to.



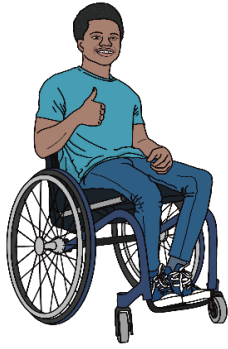
You can also ask someone to help you read the report.

What did we find out?

400



We asked more than 400 disabled people in Lewisham about their lives.



Most disabled people are happy to live in Lewisham.

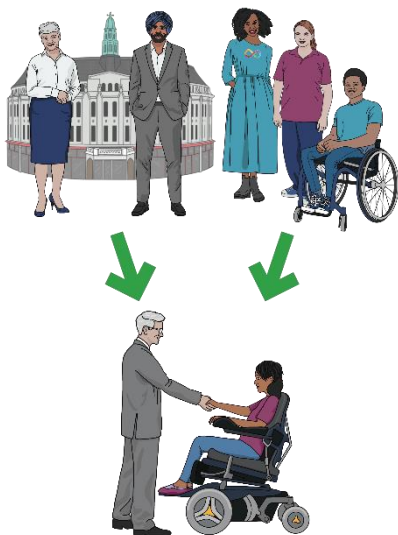


Disabled people wanted to be more involved the decisions Lewisham Council makes.



Disabled people in Lewisham want the council to listen to them and treat them fairly.

What we want Lewisham Council to do

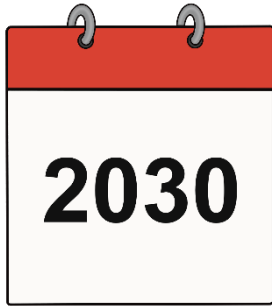


We want Lewisham Council to:

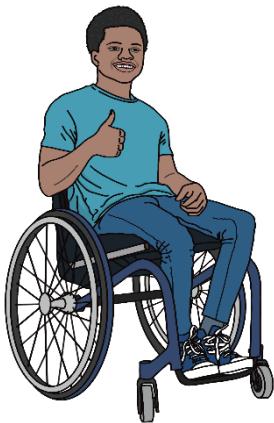
- Change the way it works with disabled people.



- Make some changes now



- Make some big changes by the year 2030.

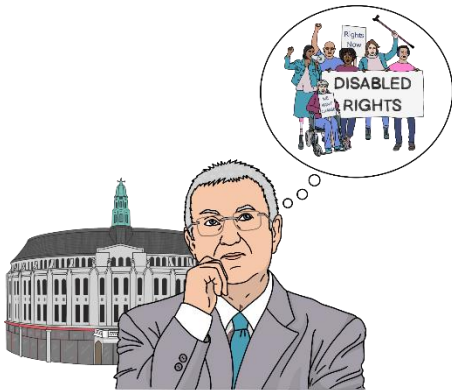


These changes will make life better for disabled people in Lewisham.



This report explains what changes the council should make.

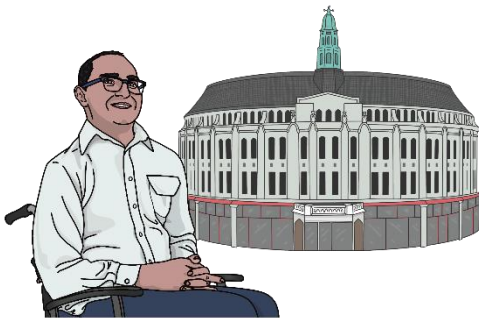
Changing the way the council works with disabled people



We want Lewisham Council to think about disabled people's rights in everything it does.



We want the council to involve disabled people in making decisions.



The council should appoint a special **officer**. The officer should be a disabled person.



The **officer** should make sure disabled people help make any decisions that affect us.

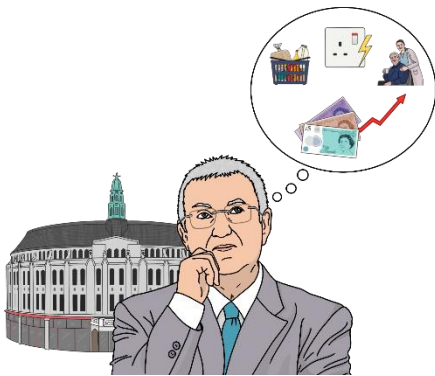


The council should help set up a special group for disabled people to share their views.

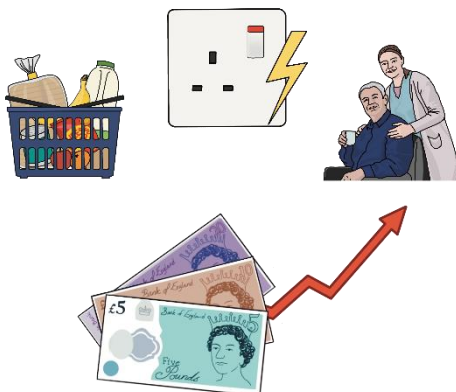
The group should be run by disabled people.

Changes the council should make now

Help with the Cost of Living Crisis



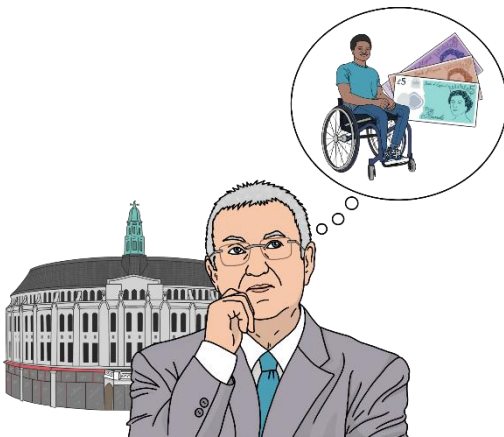
Lewisham Council should help disabled people with the **cost of living crisis**.



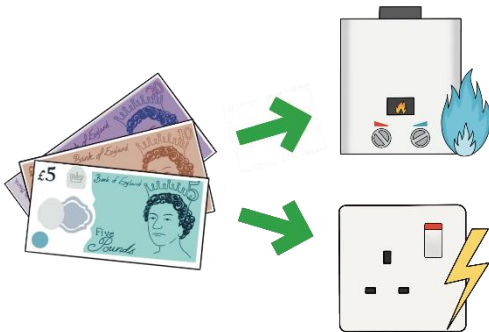
The cost of living crisis means the cost of things like food, electricity, and social care is going up.



This makes it hard for disabled people to pay for what they need.



The council should make sure that disabled people have enough money to pay for what they need.



The council should also help disabled people pay for energy if they cannot afford it.



The council should not take away disabled people's money to pay for social care.

Making Lewisham more accessible



Disabled people find it hard to get around Lewisham because of access problems.



There are too many broken pavements and potholes. These are trip hazards.



Some buildings do not have ramps. Every building should have a ramp



We want Lewisham Council to make it easier for disabled people to report these problems.



We want the council to make sure that all buildings in Lewisham have wheelchair access.



We do not want the council to create **shared space streets**.



Shared space streets are where people, bikes, and cars all use the same space.



Shared space streets are dangerous for some disabled people.



We want the Council to make sure there are enough benches for people to sit down.



We want enough disabled toilets for people who need them.

Getting information from Lewisham Council



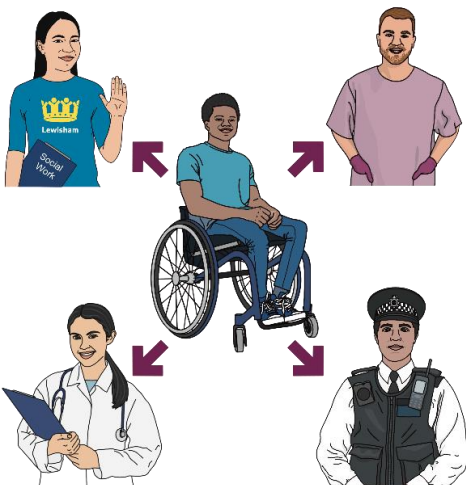
We want information to be easier to understand. This includes British Sign Language and Easy Read.

Changes we want the council to make by 2030



We have ideas for what Lewisham should be like for disabled people by the year 2030.

Access Point



Right now disabled people have to go to many places for help.



It can be hard to know where to go.



Lewisham Council should create an **Access Point**.

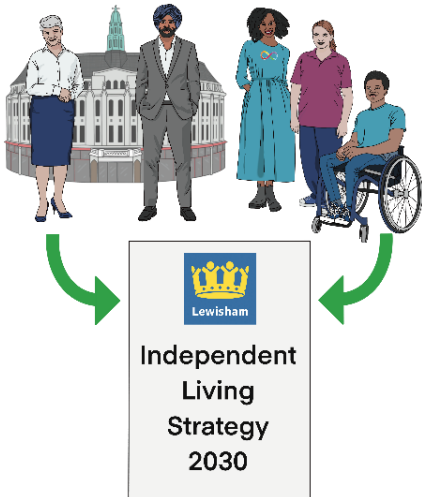


This is where disabled people can get all the help they need in one place.

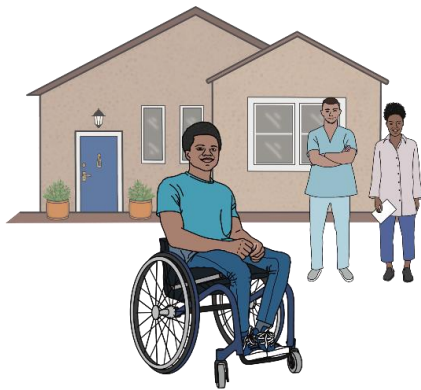


The Access Point should be run by disabled people.

Independent Living Strategy 2030



Lewisham Council should make a plan with disabled people. It should be called the **Independent Living Strategy 2030**.



This is a plan to help disabled people live more independently, with support if needed.

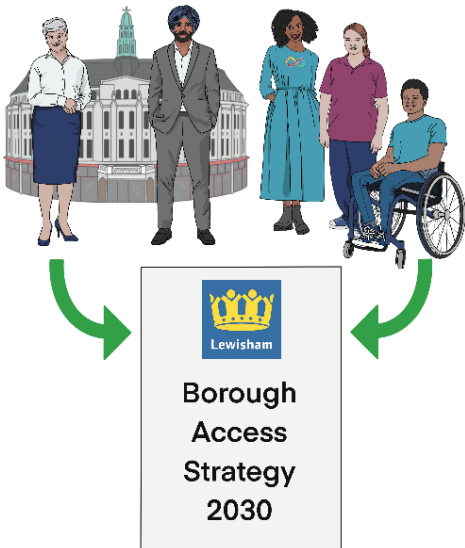


The plan should make adult social care free.

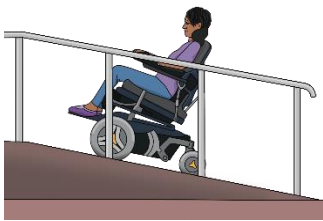


If the council cannot do that right away, it should make care as cheap as it can.

Borough Access Strategy 2030



We want Lewisham Council to make a plan with disabled people to improve life in Lewisham.



This means making it easier to

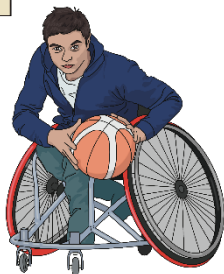
get around



find homes



go to school



do fun things



and be part of the community.

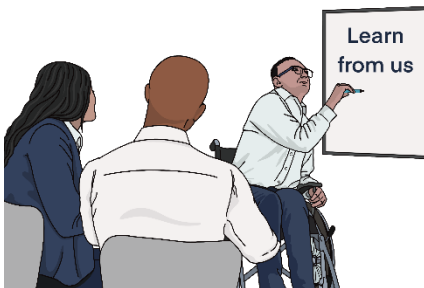
Why should Lewisham Council listen to disabled people?



Lewisham Council should listen to disabled people so they can make things better.



If the council listens, Lewisham could be the best place for disabled people to live.



Other councils could learn from them.

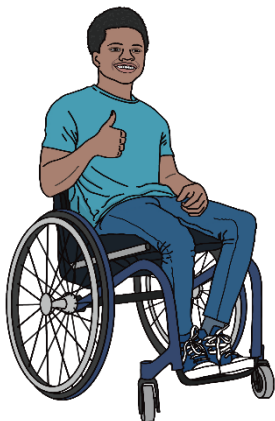
About this report



This report used the words **disabled people** instead of **people with disabilities**.



This is because we are called Lewisham **Disabled People's** Commission.



Some people prefer to say **people with disabilities**. You can use the words you are comfortable with



This information was made into Easy Read by Door in the Wall Arts Access C.I.C.



The report was written in March 2023.