

Lewisham LIFE

Winter 2024 | lewisham.gov.uk



It's panto time

A royal awakening – Sleeping Beauty at Broadway

- Discover the magic of Lewisham this festive season
- Supercharge your child's development
- Meet our new foster carer ambassadors



Lewisham

Worried about your loved one losing the Winter Fuel Payment?



They could be eligible for Pension Credit – worth about £3,900 per year.

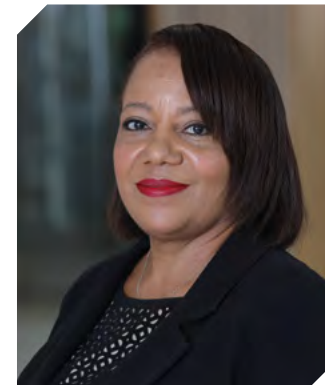
Pension credit also opens the door to other benefits including:

- **Winter Fuel Payment**
- Housing benefits and mortgage support
- Council tax discounts
- Free TV licence if you're 75 or over
- Help with certain NHS treatments



Start the conversation with your parent, grandparent or friend today.
Check eligibility using the calculator at lewisham.betteroff.org.uk

Message from the Mayor



Brenda Dacres, Mayor of Lewisham

Welcome to your winter edition of Lewisham Life. With the festive season almost upon us, in this issue we have highlighted local businesses, events and activities happening in Lewisham, from festive markets to our annual Christmas Carol Concert at St Laurence Church at 5pm on Sunday 15 December. See page 24 for all the festive fun including free fun for the family – as well as for the adults, cosy get-togethers, and affordable gift ideas.

Winter is approaching and we know many people might be worried about bills, so on page 18 we have pulled together a quick guide of winter energy saving tips to help you save money, keep warm and take positive action for the climate.

You can find an update on regeneration happening across the borough on page 20, from our flagship programme at Lewisham town centre, to what's planned for Catford town centre and the next steps for Deptford High Street.

Meet some of our new foster carer ambassadors on page 32 – Yeliz, Chevone, Patrick and Tracy – who have been brought on board to help us recruit more foster carers. With more than 400 children in Lewisham in need of a home, this is a really important role to help us make sure every child in need has a loving home.

I hope you enjoy this issue of Lewisham Life – please do subscribe to our weekly e-newsletter to keep up to date, and scan the QR code below to join our new WhatsApp channel, where you can get updates to share with your own local groups. If you'd like to reach me directly, you can email me at brenda.dacres@lewisham.gov.uk

This time of year is all about tradition and celebration but is also a chance to reflect and look forward with hope. However you are choosing to spend the festive season, I wish you all good health, happiness and an amazing New Year ahead.

Brenda Dacres, Mayor of Lewisham



- 5 News
- 15 Parks update
- 18 Cost of living
- 20 Regeneration
- 22 Panto
- 24 Discover Lewisham
- 28 Housing
- 30 Moments that matter
- 32 Fostering
- 34 Young Mayor
- 35 Your Council



Well Done, Mummy Penguin

Produced by: The Communications Team, Lewisham Council **Editorial:** 020 8314 7027.
Email: lewishamlife@lewisham.gov.uk **Photographs:** Robert Day 2023, istock.com, Jeff Teader, Nancy Yuill. **Issue 145 winter 2024.**
Printed by Sterling Solutions. Lewisham Council does not accept responsibility for goods or services offered by advertisers. Please use your recycling bin when you dispose of this magazine.

Sign up to the Lewisham Life newsletter. Keep up to date with news and information about Council services every week. Go to lewisham.gov.uk/signup



lewisham.gov.uk
 the home for all your local information

- » Get information about your neighbourhood, what's on and how to get involved
- » Find activities for you and all the family
- » Live in a controlled parking zone? Apply for your permit online
- » Get local news and information direct to your inbox – subscribe at lewisham.gov.uk/signup

If you cannot contact us online, you can call 020 8314 6000

Useful contacts:
Housing Services
 0800 028 2028
housingenquiries@lewisham.gov.uk
Local health service
nhs.uk or NHS 111
Police (non-emergency) 101
Thames Water
 0845 920 0800 (customer services)
 0800 714 614 (24-hour leakline)
Gas emergencies 0800 111 999

SIGN UP to our weekly newsletter lewisham.gov.uk/signup

Exciting progress for Back the Bakerloo

The Bakerloo Line runs through the heart of our city. However, the trains are currently the oldest ones still operating in the UK, leaving the whole line at risk of being shutdown at any time.

We are working hard with other councils and partners across London to ask the government to fund the upgrades that the line needs and to extend it through South East London and eventually down to Hayes.

Mayor Brenda Dacres is helping to spearhead the Back the Bakerloo campaign and, in September, made a strong case to a meeting of government and business leaders in central London.

Since then, Transport for London (TfL) has appointed two consultancy firms to begin a feasibility study – essentially working out how the project could be achieved – for four new stations along the route, including New Cross Gate and Lewisham.

This project has enormous potential and could unlock up to 107,000 new homes and 150,000 new jobs across the UK and drive economic growth.

Locally, we would see faster journey times, fewer cars on the roads, benefits for our local business community and economy and better connectivity with the rest of London.

As you might expect, there is a huge amount of public interest in this campaign, with TfL stating it has had a higher number of responses for this project than anything else it has ever consulted on. If you would like to Back the Bakerloo or keep up-to-date with all the latest news, visit backthebakerloo.org.uk



Lewisham celebrates Black History Month



This year's Black History Month programme in Lewisham was packed with exciting events that celebrated the achievements of the Black community and their lasting impact. From performances by IRIE! dance theatre to creative workshops, there was something for everyone.

We also awarded grants to

local organisations to host their own events, including a book festival and a film club.

While Black History Month is recognised nationally every October, in Lewisham we honour Black voices and experiences daily through our Black History Lewisham 365 (BHL:365) initiative.

Our brand new BHL:365

Trailblazer Map is an interactive guide which features iconic figures like comedian Oliver Samuels and musician Jimi Hendrix, showcasing their unique contributions to the borough. It's on our website for you to explore all year-round. Find out more at:

lewisham.gov.uk/bhl365

Step into the spotlight

The Talent Pipeline Scheme was set up by our panto partners, Joy Productions, to create employment opportunities in theatre for young people from Global Majority and/or working-class backgrounds.

Now in its second year, it has already supported 12 Lewisham

residents into the industry. Participants work on pantos at Broadway and other London theatres, earn London Living Wage and are mentored by West End professionals. Bursaries are available in roles including stage management, sound, lighting, costume, choreography, producing, marketing and design.

This scheme is open to anyone who wants to work in theatre and is either currently in higher/ further education, or within three years of having graduated. Please contact Lisa Richardson, Joy Productions' Head of Outreach on ldrichardson.theatre@gmail.com to find out more.

Nearly £1 million to increase affordable workspace

This autumn, we celebrated the success of our Affordable Workplace Strategy which, since September 2023, has seen us invest nearly £1 million to support our high streets, workspaces and local business community.

Our workspace grant programme has encouraged local

businesses to improve or create spaces that not only boost their operations but also generate new opportunities for the borough and attract talent to work locally.

In addition to the grants, we have transformed 40 previously disused sites into 71,000 square feet of thriving workspaces – an

area equivalent to three cricket pitches. This investment has safeguarded more than 100 jobs and created 25 new positions.

To discover affordable, shared and creative workspaces across Lewisham, please explore SHAPES Lewisham's Space Finder directory at: shapes.co.uk/spaces



You are the champions

In October, we hosted our seventh annual Mayor's Community Awards at the Civic Suite, honouring the local heroes who go above and beyond to support others.

With more than 250 nominations recognising the inspiring individuals, businesses

and groups dedicated to making a positive impact across Lewisham – the event was a testament to the power of community spirit.

Mayor Brenda Dacres took the stage to spotlight four exceptional champions: Souljah Powell (Under 21, Young Person), Trevor Pybus (Individual), Plateful Café

(Faith or Community Group) and Facework Group (Business). Their hard work was honoured through four moving films presented during the event.

You can view their stories, by visiting the Council's YouTube channel:

youtube.com/lewishamcouncil



Say 'I do' at Broadway

Are you planning to tie the knot in 2025? We are pleased to announce the historic Broadway Theatre is now licensed to hold weddings and civil partnerships. Whether you're after an intimate or lavish ceremony, our beautifully restored art deco building offers bags

of character and picture-perfect backdrops for your special day. To make an enquiry, email weddings@broadwaytheatre.org.uk or visit broadwaytheatre.org.uk/weddings for more information.

Get your primary school applications in

Apply for a place at primary school for your three- or four-year-old, whether or not they attend nursery. Children born between 1 September 2020 and 31 August 2021, can start reception class in September 2025. You must apply before the deadline Wednesday 15 January 2025 or you could miss out on a school place. Apply online at: eadmissions.org.uk



Do you have an idea which could make a positive difference to your community?



- ✓ Do you need support, training and finance to help make your idea come to life?
- ✓ Could you benefit from being part of a network of other like-minded local people?
- ✓ If yes, then apply for one of 20 free places on the 2025 Lewisham Changemakers course.



The 2024 Changemaker cohort.

The Changemakers course offers:

- Initial grant of £400 to get you started
- Advice on developing a 'business plan'
- Income and fundraising training
- Clarifying your 'Theory of Change'
- Growing effective partnerships
- Marketing and knowing your customers
- Links to a network of Changemakers

Changemakers is run by Facework, a social enterprise and supported by:

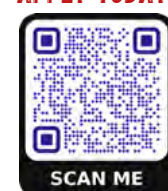


WHEN:
Sat 18th January and then 8 Wednesday evenings.

WHERE:
Hatcham House, 367, Queens Rd SE14 5HD

SEE MORE:
www.face.work/changemakers

APPLY TODAY



With the NHS App you can...

- ▶ Order repeat prescriptions any time of day
- ▶ Collect your prescriptions
- ▶ View your GP records and test results
- ▶ Quickly check symptoms
- ▶ View, cancel or book GP appointments*
- ▶ Contact your GP practice online*

*Availability may vary by GP practice.

Your NHS, your way.
Rediscover the NHS App.



Turn on notifications to get key messages through the NHS App



Could you help someone use their smartphone?
• use their smartphone
• set up email
• fill in an online form?
100% of buddies report their work has a positive impact and rate the experience as good or excellent.
020 8314 4702
info@catbytes.community
www.catbytes.community



Would you like help using a computer or smartphone, accessing the internet or filling in an online form?
Our digital drop-ins are free and open to everyone. They run all over Lewisham all week round.
020 8314 4702
info@catbytes.community
www.catbytes.community



MOO SOOL ACADEMY OF MARTIAL ARTS SE6
YUSOOL
(KOREAN JUJITSU)

Classes for all ages: 5yrs+, Teens & Adults
FIRST CLASS FREE
www.moosoolacademy.com
info@moosoolacademy.com
t 07710407021



THE STUDIO SE6
YOGA • PILATES
WWW.THESTUDIOSE6.COM
E: info@thestudiose6.com
T: 07961440762

A RACE award for Deptford Park Primary

Congratulations to Deptford Park Primary School for achieving the bronze RACE Chartermark.

This accolade recognises the school's dedication to improving race equality, as praised by the judging panel for promoting an inclusive culture where everyone – staff, students, parents, and partners – feels valued.

The Chartermark was developed by SSAT (the Schools, Students and Teachers network) and, schools improvement service, Fig Tree International.



'Tyre-d' of inconsiderate bike parking?



We are working to improve the operation of dockless bikes (cycle hire, e-bikes) in Lewisham.

To reduce bikes being parked in unsafe areas, we are introducing designated marked bays. This means operators and riders must park the bikes in these specific areas, or face penalties.

We are delivering marked bays in phases. So far, we have installed them in Blackheath, Lewisham Central, Ladywell and Crofton Park. Forest Hill is next.

Find out more at: lewisham.gov.uk/cycling



FREE BOILER AND INSULATION



Are you using a very old boiler?
Are you using electric heaters?
Do you live in a house with an EPC rating of E, F or G?

You can be eligible for a grant to upgrade your boiler and insulation, and also up to 100% funding for heat pump at off gas properties, under the Government ECO4 Grant.

Criteria To Qualify

Anyone in a household needs to be in receipt of the following benefits

- Income-based Jobseeker's Allowance (JSA)
- Income-related Employment and Support Allowance (ESA)
- Working Tax Credit
- Child Tax Credits
- Universal Credit (UC)
- Housing Benefit (only for first-time central heating jobs)
- Pension Credit – guarantee or Savings Credit
- Child Benefit with certain income

OR If your household gross income is less than £31,000 per year.

OR Anyone in household Identified by doctor or GP with health condition of cardiovascular, respiratory, immunosuppressed or limited mobility related.



External wall insulation Grants

Great British Insulation Scheme (GBIS)

Get a Grant for Your Insulation — No Benefits or Low Income Required!

New Offer!

Now you can qualify for Grants to insulate your Walls, Loft, or Flat Roof insulation even if you're not on benefits, low income, or have no health conditions!

Eligibility: Council Tax Bands A to D properties only



Greenland Energy Services Ltd

102 Brockley Rise, London SE23 1LN
info@greenlandenergy.co.uk
www.greenlandenergy.co.uk

0208 314 1028 / Out of Hours 07497 376031



scan me for more info



Better pay for Lewisham

Pay is a crucial part of job satisfaction and wellbeing. It's why we're on a mission to turn Lewisham into a Living Wage Place, where everybody that works in the borough receives the Real Living Wage.

To help achieve this goal, we have launched a grant programme to help local businesses cover their accreditation fees for three years.

If your organisation is based in Lewisham, has up to 250 employees and has become an accredited London Living Wage employer for the first time since Friday 1 November 2024, you can apply at: lewisham.gov.uk/LondonLivingWage



Jumpstart to Success

Our adult learning service is working in partnership with Youth First and Lewisham Works to deliver Jumpstart to Success, a free programme for young people aged 16-24 who are currently not in education, employment, or training. The programme provides one-to-one mentoring to support people into training or employment, with a focus on personal development, boosting self-confidence and developing the skills needed for work.

Participants have access to job vacancies and work placements and the opportunity to meet representatives from a variety of industries including sport, hospitality, music, dance and gaming!

There are three ways to register your interest:

- Email your contact details to adultlearningiag@lewisham.gov.uk
- Call 020 8314 9161, Monday–Friday, 9am–4.30pm
- Complete our online form lewisham.gov.uk/jumpstart

A new forum for Catford

In October, we brought together local leaders, community members and partners, including the Met Police, to discuss challenges facing Catford town centre. The event involved updates

on measures taken to improve safety, like the new Public Space Protection Orders (PSPO) aimed at tackling anti-social behaviour, as well as gathering ideas for future improvements. Discussions covered everything

from creating new spaces to boosting the local economy. A taskforce will be set up to explore these suggestions further. The forum plans to meet again in 2025, so stay tuned for more updates.

Stop smoking for 28 days and you're **five times more likely** to

QUIT FOR GOOD

Let us help!

We can offer:

- Free vapes
- Nicotine gum and patches
- Prescriptions
- Face-to-face or telephone appointments



Get in touch if you live, work or study in Lewisham.

Or visit www.smokefreelewisham.co.uk
Tel: 0800 0820 388



Go green this Christmas



This Christmas, give your leftovers a new lease of life by turning them into renewable energy. Instead of discarding your scraps, pop them in your grey food waste bin. From meat and fish to vegetable peelings, dairy and even tea bags – all can be recycled. Just remember to remove any packaging first! In the past year, over 6,000 tonnes of food waste was collected locally to create valuable energy.

You can also give your real Christmas tree a second wind by recycling it at one of our convenient drop-off points between Thursday 26 December and the end of January. Last year alone, over 6,000 trees were turned into wood chippings for local parks. Recycle your tree for free lewisham.gov.uk/christmasrecycling

No smoke without fire

This winter, swap the wood-burning tradition for a safer source of warmth. While a cosy fire feels festive, it releases harmful particles that can cause serious health issues. Wood burning also increases pollution and reduces life expectancy across the borough. By using cleaner

alternatives like electric heaters or blankets and minimising wood burning, you protect your health and contribute to a cleaner Lewisham.

Read our open fires guidelines lewisham.gov.uk/openfires and download the Lewisham Air app for air quality news and alerts.



Parklife: Lewisham No1 in London

Exciting news – Lewisham is rated number one, out of 32 London boroughs, for best parks performance in the annual Good Parks for London Report 2024. This assessment is rigorous and shows how all London borough parks' services perform against the ten Good Parks criteria, showcasing examples of good practice and case studies. London's inner-city boroughs are punching well above their weight with the top three borough scores in 2024.

Pupils from Downderry Primary school joined the Mayor, Deputy Mayor, local MP, ward councillors, Glendale employees and local residents at Beckenham Place Park to celebrate topping the table, with rubber duck races on the river and fun in the playground.



We scored highly in all areas and were commended for working so hard and significantly improving on our overall score. This makes Lewisham not just the top performing borough but also one of the five big improvers this year.

This is a huge achievement and we are so proud of our fantastic

parks' team, our excellent partners Glendale and all the amazing volunteers and Friends' groups across our borough who work so hard to make sure that our parks and nature reserves are so special. Thank you to everybody involved!

Read the full story at: lewisham.gov.uk/GPFL

There's more!

We recently won three gold awards for parks and conservation areas at the London in Bloom Awards 2024. We also won three silver gilt awards recognising our small parks and nature reserves in the borough. Lewisham's parks and green spaces successfully retained all 23 Green Flags this year, the awards given to the very best green spaces

around the world. In addition, Beckenham Place Park achieved the prestigious Green Heritage Site Accreditation, supported by Historic England.

£3 million improvements at Beckenham Place Park Lots has been going on at the east side of the park over the last 12 months.

• A brand new playground

- Improvements to the river
- Increased volunteering opportunities
- Extensive new landscaping, planting and re-wilding to reduce flood risk

The multi-use games area, cycling trail and new café are progressing and you can keep up to date on the Beckenham Place Park website: beckenhamplacepark.com

YOGA
TO SUPPORT WITH THE SIDE EFFECTS OF CANCER TREATMENT & RECOVERY
Join our friendly classes in Catford. No previous experience of yoga needed.
Contact: Sarah Cross
sarahcrossyoga@gmail.com
www.sarahcrossyoga.co.uk
07562 660622

A ringing enforcement

All residents, businesses and organisations in the UK need to be aware of changes to our telephone network before the end of 2026. Telephone exchanges will start using digital lines, which means everyone's home and work landlines will need to use a router.

This change will also affect anything that uses a phone line such as intruder alarms, Telecare devices, lift alarms and other essential services. You don't need to do anything now. Your communication provider will get in touch, if the change impacts you.

In case you missed it

Here's a round-up of news from the summer

World Car Free Day 2024

In September we celebrated World Car Free Day by hosting a family-friendly, free community day on Deptford High Street. It was great to see so many people enjoying food and drink from local businesses and children taking part in the games and activities organised by London Play. Twenty roads across the borough were also transformed into play streets that weekend, following applications from residents.



Did you catch SEEN?

This summer, we launched SEEN Lewisham, our first-ever festival celebrating Global Majority artists. The weeklong event featured over 50 exciting activities – from acting workshops, to markets, to music, dance and theatre performances – held at Broadway Theatre and other venues across the borough. It was a huge success with record turnouts and is all set to return in 2025. Stay tuned for updates.

New school crossing

We are so glad to share that Prendergast Ladywell School now has an operational permanent school crossing as well as various other safety improvements along Manwood Road. For years, there has been no safe way for students to travel to and from school so we would like to thank the many people who campaigned hard for safer roads.

We will continue working hard to make Lewisham other streets safer, and more cycling and walking friendly.

Working well

Lewisham Works, our free employment service, has just reached an exciting milestone. It has now supported over 1,000 local people on their journey towards employment.

Are you a Lewisham resident looking to find a good job? Visit lewisham.gov.uk/lewishamworks to speak with one of our friendly advisors.




CONFIDENTIAL SERVICE FOR YOUNG PEOPLE

DRUG, ALCOHOL & SEXUAL HEALTH SUPPORT, INFORMATION AND ADVICE




020 8690 3020

insightlewisham@waythrough.org.uk

LEWISHAM 38-39 WINSLADE WAY

CATFORD SHOPPING CENTRE SE6 4JU




Let's remove the stigma around HIV

Undetectable = untransmittable

Take back control of your sex life with PrEP!

Scan the QR code to find out more. Or search PrEP









Keep warm and cut costs this winter

As the price cap rises, households will be paying more to use the same amount of energy but there are simple hacks that can help you reduce your bills

We've put together these winter energy saving tips to help you save money on bills, keep warmer and more comfortable and take positive action for the climate.

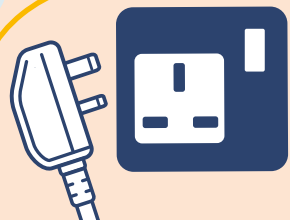


Break the mould

- Condensation is caused when warm, moist air comes into direct contact with a cold surface like a wall, window or windowsill. If condensation is allowed to build up, it can cause damp and mould. Always wipe down surfaces where moisture settles to prevent mould from forming.
- You can get rid of mould behind furniture by moving it away from the wall, allowing air to circulate.
- It's important to make sure you ventilate your home, especially where there is moisture. Close kitchen and bathroom doors to prevent steam from going into other rooms, leave a window open after showering or cooking to let steam escape, or use an extractor fan.

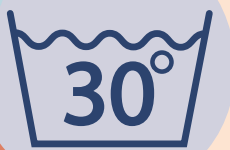
Switch off at the plug

Turn your appliances off standby mode, or off at the plug, when you're not using them. Turn off the lights each time you leave a room. Save up to £55 per year.



Wash your clothes on cool

Wash your clothes on a 30 or 40 degree setting instead of higher temperatures and wait until you have a full load to run a wash. Save up to £25 per year.



Dry your clothes efficiently

Avoid using a tumble dryer, where possible, and dry your clothes on racks rather than radiators in the warmest and most ventilated areas of your home, to avoid damp. Save up to £58 per year.



Fill your dishwasher

To reduce your water usage, and save money, only run your dishwasher when it is full. Save up to £21 per year. If you hand wash, switch to a bowl.



Don't fill the kettle

Only boil the amount of water you need. Save up to £11 per year.



Take a shorter shower

Showering for only four minutes could save you £78 per year on bills and swapping one bath a week with a short shower could save you an extra £14.



You could be entitled to £3,900 in Pension Credit

Are you worried about losing your Winter Fuel Payment?

Now is the time to check whether you're eligible for Pension Credit. It's not only worth an average £3,900 a year but is also a gateway to other benefits including housing support, Council Tax discounts and the Winter Fuel Payment itself.

Millions of pounds in Pension Credit go unclaimed every year in Lewisham alone so it's worth investigating – even if you aren't sure whether you're eligible.

Steve, 66, a retiree from Lewisham, was recently granted Pension Credit and now wishes he'd applied sooner.

"I heard about Pension Credit from one of my neighbours," he said. "But I have a problem with filling out forms.

"They offered to help me complete the form online. It was easy and took no more than an hour. I didn't have to upload any documents, the decision was made quickly, and I received the payment within two weeks.

"I got an extra £25 per week for my pension and an extra £80 per week for my Pension Credit Premium as it was backdated by 13 weeks."

Pension Credit tops up:

- your weekly income to £218.15 if you're single
- your joint weekly income to £332.95 if you have a partner

To find out whether you're eligible for Pension Credit visit lewisham.betteroff.org.uk. Please apply by Saturday 21 December 2024 to make a backdated claim in order to receive the Winter Fuel Payment.

Transforming our borough

An update on the town centre projects set to breathe new life into different parts of Lewisham






We heard you loud and clear on plans for Lewisham town centre

We are investing £24m in Lewisham town centre to help boost the local economy and create new jobs. This is a once-in-a-generation transformation that will revitalise the market, library and high street. We wanted to make doubly sure that the changes we were suggesting reflected the needs and desires of the community.

Since October 2023, we have asked for your help in developing our designs. We have held multiple workshops with local groups and charities, popped-up in places like Glass Mill and the shopping centre, and run a six-week survey. Thousands of you got involved.

With planning permission for the three projects now approved, construction already underway on the high street and work on the library and market canopy to begin next year, we wanted to show how your feedback has helped shape our plans.

Overall, you are excited by the changes to come.

-  **78%** positive about better street lighting
-  **77%** positive about better paving
-  **70%** positive about library improvements
-  **66%** positive about designs for the market
-  **75%** positive about more trees and planting



However some themes emerged from your feedback. Here's how we're responding.

- **Maintenance:** We're developing a strategy for regular inspections and public reporting so new planters, greenery, seating and market canopy stay well looked after.
- **Personal safety:** We're improving lighting and CCTV on the high street and, for additional safety measures will explore local partnerships like Landsec and community police.
- **Support for traders:** We've been collaborating with market traders throughout the entire process to ensure they are kept informed and updated.
- **Evening and nighttime:** We will ensure any after-hours programming under the market canopy reflects the community. You've already given us loads of great events ideas. We will report back once we've checked feasibility.
- **Toilets:** You'd like there to be easy access to toilets for any evening or nighttime events. One option we're exploring is extending the community toilets scheme.
- **Accessibility:** We're improving pavements and removing obstructions like disused phone boxes to make the high street easier to navigate but will also review the placement of temporary street furniture like A-boards.
- **Road Safety:** Concerns about young children's safety if the hub's main entrance was located on Lewisham High Street has led us to relocate it to the quieter Limes Grove for safer access.
- **Inclusivity:** You've challenged us to create a town centre where everyone feels welcome – all ages, genders, backgrounds and physical abilities. With your input, plans for the hub now include fully accessible Changing Places toilets, a youth library, bookable meeting rooms and a sensory space.

The full feedback report and programme updates are available to download on our website. To be the first to hear about other opportunities to influence our plans, please sign up to the weekly newsletter.

Catford town centre

Thanks for sharing your thoughts on a new public space

During the summer we asked for feedback on design concepts for a temporary new public space in Catford's town centre. This space will be developed if Transport for London (TfL) successfully re-routes part of the South Circular. We received over 1,000 responses, here's what we heard:

- Walking is the top way to get around. You want better options for pedestrians.
 - You would like a greener space which can accommodate physical activities, arts, culture, events and food stalls.
 - The space should be inclusive, celebrating Catford's unique identity and history.
 - You've also asked for better waste management, public toilets and improved safety measures.
- Your feedback is being used to further develop our designs. We will share next steps shortly.

A fantastic multi-use space

The plans for Thomas Lane Yard are being finalised. This exciting project has workspace for local businesses, 113 affordable homes and a public space with trees, greenery and children's play area. Stay tuned as we are submitting our planning application soon.

The return of the Constitutional

Works to refurbish the former Catford Constitutional Club are ongoing. It is on schedule to reopen as a pub with a community kitchen and space for performance, music and arts in 2025.

A new-look Deptford High Street

After consulting residents in 2023, we are now asking businesses and traders to share thoughts on our plans to update the high street. The feedback will be used to develop initial designs before we launch our public consultation next year.

For further updates on all these projects, visit lewisham.gov.uk/regeneration

Prepare to be spellbound by **Sleeping Beauty**

Don't get caught napping! Book tickets for our magical new pantomime, Sleeping Beauty – festive fun for all ages at Broadway this Christmas.

Pantomime is back at Broadway this Christmas with a spellbinding new production of Sleeping Beauty, written and directed by the legendary Susie McKenna and her award-winning team.

Set in the magical kingdom of Lewishtonia, the story begins with the joyous birth of our heroine, Princess Tahlia. Furious at being snubbed from the official celebrations, wicked fairy Carabosse casts an evil spell on the Princess, changing her fate forever. As Tahlia turns 18, she discovers her true identity, but can she reclaim her destiny and save the kingdom?

After the huge success of last year's Jack and the Beanstalk, we are excited to continue our partnership with Joy Productions to present this gothic fairytale with a 21st century twist. Packed with fun for all the family – expect colourful characters, knockabout comedy, show-stopping routines, iconic songs and no shortage of sparkle.

This year's stellar cast features Broadway favourites: Wayne Rollins as fire-breathing Denzil the Dragon, Durone Stokes as swashbuckling Prince Gabriel and Ben Fox as dithering King Eric The Undecided. They are joined by Roshani Abbey as Tahlia, our fearless Sleeping Beauty; Olivier award-winner Justin Brett as larger-than-life Dame Nanny Nora; while Lisa Davina Phillip is the deliciously devilish Carabosse.

Sleeping Beauty is a production with community at its heart and to ensure as many people as possible can see it, 600 tickets are being offered at £1 each, through local groups and organisations.

Sleeping Beauty runs from Wednesday 4 – Tuesday 31 December with tickets starting at £15. Visit broadwaytheatre.org.uk to book yours.



Lisa Davina Phillip, who plays Carabosse, says:

“I'm so excited to be doing panto at Broadway. It's my manor, my "endz"! I performed here with my drama group aged 15 when it was still Lewisham Theatre. It feels like a home-coming and, for the first time ever, I'm playing the villain. No more goody-two-shoes. It's going to be so much fun. Bring all the family and get ready to boo, hiss and of course cheer!”



Apply by
31 December
at
gov.uk/evisa

Biometric Residence Permits are being replaced by eVisas

lewisham.gov.uk/evisa

Drop in support sessions for eVisa applications:

Lewisham Refugee & Migrant Network (LRMN)
 All Saints Hatcham Community Centre
 107 New Cross Road SE14 5FF
 Wednesdays 10.30am–1pm

Citizens Advice Lewisham
 Leemore Centre
 33 Clarendon Rise SE13 5ES
 Mondays 9.45–11.45am

St. John's Church
 353 Bromley Road SE6 2RP
 Wednesdays 12 noon–2pm

Perry Rise Baptist Church
 Perry Rise SE23 2QL
 Thursdays 12 noon–2pm

PEER & VOLUNTEER SUPPORT SERVICE

Our services:

- **Naloxone Peer2Peer Programme**
 Naloxone is a medicine that rapidly reverses an opioid overdose. This Naloxone programme aims to provide Naloxone kits to Lewisham
- **Buddying Programme**
 Support provided by buddies includes supporting an individual to attend appointments or escorting an individual to detox/rehab.
- **Telephone Helpline**
 Callers will be signposted to treatment services or other support provisions across Lewisham.

☎ **07974 292526**

✉ **PandV@humankindcharity.org.uk**

Discover Lewisham this winter

Whether you're shopping for presents, planning a night out or wanting to keep the kids entertained, Lewisham has you covered.

There is plenty happening in Lewisham all year-round, but winter adds an extra layer of magic as the borough comes alive with bustling food and craft markets, twinkly lights and entertainment to keep you warm in the lead-up to Christmas.



Small Business Saturday is on 7 December.
When you support local businesses, more of your money stays in the local economy helping our community to thrive.

Festive markets

Head to a market to pick up the perfect gifts for loved ones, shop for fresh produce or enjoy street food from local vendors. Alternatively grab a mulled wine, kick back and soak up the vibes.

The Big Market at Fox & Firkin

Sunday 1 December, 12 noon–6pm

Over 40 stalls bursting with the best independent local makers and artists. Expect handcrafted wonders, unique jewellery, art, homeware, records and more plus DJs keeping the vibes up. 316 Lewisham High Street, SE13 6RT

Winter Marketplace

Saturday 7 and Sunday 8 December, 10.30am–4pm

A vibrant market brought to you by local designers, artists and students from our adult learning service, filled with unique handmade treasures, including jewellery, pottery,

artwork and seasonal cards. Brockley Rise Adult Education Centre, 2 Brockley Rise, SE23 1PR

Horniman Market

Sunday 8 December, 10am–3pm

Special seasonal edition of the bustling, weekly Sunday market, filled with fresh produce, artisanal goods, lots of unique gift options and holiday cheer. Horniman Museum & Gardens 100 London Road, SE23 3PQ horniman.ac.uk

Catford Food Market

Sunday 15 December, 10am–4pm

Don't miss out on the festive goodness at Catford Food

Market as they count down to Christmas. Filled with tasty treats and gifts for food lovers from local vendors, there's no better place to find delightful stocking stuffers! Catford Bridge train station, SE6 4FD

Marketmas at Lewisham Market

Sunday 15 December, 10am–5pm

Music, markets and magic. Marketmas 2024 is a new, tinsel-wrapped winter festival for Lewisham. Stop by for delicious festive food, a mini makers market, live music and much more to be announced. Situated in front of Lewisham Shopping Centre

Fun for the family

Forster Memorial Park Christmas Market

Sunday 15 December, 11am–4pm

This family-friendly event is stuffed full of stunning handmade items from local businesses. Enjoy delicious food, sip on mulled wine and visit Santa's grotto.

Whitefoot Lane, Bromley, BR1 5SD

Blackheath Vintage Trail

Saturday 30 November and Sunday 1 December, 12 noon–6pm

The female-owned Blackheath Creatives are hosting a weekend of seasonal cheer, featuring local businesses with the best winter gifts, mulled wine, live music and choirs.

16–18 Montpelier Vale, Blackheath, SE3 0TA

Well Done, Mummy Penguin

Sunday 1 December to Tuesday 24 December, 11am and 2pm

A magical winter treat for ages 3 and up. This delightful stage adaptation inspired by the latest picture book from Chris Haughton, features daring

acrobatics, integrated sign language, and heartwarming humour. Tickets from £14 The Albany, Douglas Way, SE8 4AG. thealbany.org.uk

Grove Park Community Market

Saturday 7 December, 12 noon–4pm

Experience the festive spirit with Lewisham's Grove Park Library team at their Christmas market, featuring handmade gifts, a festive raffle, Santa's grotto, and mulled wine. Somertrees Avenue, Grove Park, SE12 0BX

Christmas Craft at Downham Library

Saturday 14 December, 10.30–11.30am

Join us for Christmas Craft at Downham Library, where you can create festive decorations and enjoy a range of seasonal activities for all ages.

7–9 Moorside Road, BR1 5EP

Christmas Treasure Hunt at Deptford Lounge

Friday 20 December to Monday 6 January

Discover hidden festive surprises throughout the season during library opening hours. Come and see what magical finds await! The Library, Deptford Lounge, 9 Giffin St, SE8 4RH

Christmas fun at Catford Library

Dive into a world of winter fun at Catford Library! Explore all the exciting activities we have lined up:

Christmas Craft Club

Sunday 15 December and Sunday 22 December 2–3pm

Festive Fridays Craft Club

Friday 13 December and Friday 20 December 3.30–4.30pm

Baby Bounce: Seasonal Special

Monday 23 December 10.30–11am

Jiggle Toddler Tales

Wednesday 18 December 10.30–11am

23–24 Winslade Way, Catford Centre, SE6 4JU

For grown-ups
Deptford Library Christmas Cinema Club

Thursday 5, 12 and 19 December, 6–8pm
 Snuggle up with friends and family for cosy showings of our favourite festive films at Deptford Lounge this Christmas. Free, 18+
 9 Giffin St, Deptford SE8 4RJ



Broadway Bingo Christmas Special

Wednesday 18 December, 8–10.30pm
 Join THAT GIRL and an extra special guest for live vocals, lip syncs, campy, tomfoolery and PRIZES all with a Christmas twist. Don't miss out on a spectacular evening of fun! Doors open at 7.30pm.
 Broadway Theatre, Rushey Green, Catford, SE6 4RU
 Tickets £7 at broadwaytheatre.org.uk

Live Band Karaoke: Christmas Special

Friday 20 December, 7pm
 Kick-start your festive fun at The Fox and Firkin. This lively event features a five-piece band ready to perform nearly

400 songs across a range of genres. It's the perfect way to sing your heart out and make memories this Christmas!
 316 Lewisham High St, SE13 6JZ
 Tickets from £10 at foxfirkin.com/events

Christmas Pub Quiz

Sunday 22 December, 8–10pm
 Gather your A-team and get ready for a festive night at The Crown Lee Tavern. Test your knowledge for a chance to win a £50 drinks tab for the top team. Entry is just £2 per person and all proceeds go to the Wooden Spoon charity.
 117 Burnt Ash Hill, SE12 0AJ
thecrownlee.co.uk/whats-on

The Duke of Catford

Tuesday 12 November – Friday 3 January
 Celebrate the season with your own Christmas party at The Duke! Enjoy three delicious festive courses for £34.95, or simply drop by for some holiday drinks and festive cheer.
 167 Rushey Green, SE6 4BD
 Book your table at dukeofcatford.co.uk/christmas

Gift shopping

Treat your loved ones (or yourself) to unique treasures this winter. Shop local and uncover the holiday charm in our favourite gift shops!

Blackbird Boutique

Shop fairtrade and organic clothing, beautiful accessories, and stylish, sustainable gift ideas.
 28 Blackheath Village, SE3 9SY
 Instagram: @blackbird.blackheath

Bunka

Get your festive gifts at Bunka, an independent lifestyle store in Forest Hill, offering design-led fashion, homewares, and gifts for the whole family.
 4 Dartmouth Rd, SE23 3XU
bunka.co.uk

Magi gifts

Based in Brockley, this is your go-to shop for holiday gifts, greeting cards, gift wrap, and children's toys—perfect for all ages and winter occasions.
 193 Brockley Rd, SE4 2RS
magigifts.co.uk



Nonki Store

Children's café and soft play in Hither Green with shop which stocks toys and children's books including the Tiger's Eye series by Catford based author Allison Parkison.
 66 Springbank Road, SE13 6SN
nonki.co.uk

Broadway Theatre

From £3.50 you can gift a friend or loved one membership of Broadway. Members enjoy discounts at the bar, backstage tours, no booking fees while supporting our work with young people and community groups.
 Rushey Green, Catford SE6 4RU
broadwaytheatre.org.uk/members

Affordable, green gift ideas:

- This winter, embrace upcycling by giving old or unused items new life as unique, meaningful gifts. Shop locally at some of
- Lewisham's best gift shops for sustainable treasures, that support the environment and our community.

Halcyon Books

Offers a wide selection of affordable second-hand books. The family-run bookshop also promotes local authors and artists.
 266 Lee High Road, SE13 5PL
halcyonbooks.co.uk

Müll.Club

Eco-friendly Christmas gifts at Müll Brockley, repurposed rings, candle holders, and hair accessories, plus recycling workshops and a refill hub.
 Shop online at mull-club.co.uk
 Also available at Deptford Does Art, 28 Deptford High Street, SE8 4AF and Present Catford, 187 Torridon Road, SE6 1RF

Twisted Vintage Jewellery

One-of-a-kind, repurposed jewellery by Honor Oak Park artist Brigitte. Use the bespoke service to transform your inherited pieces into contemporary designs.
 Visit: twisted-vintage.co.uk

The Well Charity Shop

Deptford Methodist Churches welcoming charity shop, offers a variety of quality second-hand items – including clothing, bric-a-brac, toys, books, and small furniture.
 1 Creek Road, Deptford, SE8 3BT
disabledpeoplescontact.org.uk

Lewisham Toy Library

This Christmas, give the gift of play with Lewisham Toy Library. Borrow, enjoy, and renew favorites to reduce waste and delight your little ones!
 Lewisham Shopping Centre, Unit 46, SE13 7EP
lewishamtoylibrary.org.uk

TRAID Lewisham

A store built with eco-friendly materials to reduce carbon emissions, offering a selection of second-hand clothing and accessories for the whole family.
 41–43 Lewis Grove, SE13 6BG
traid.org.uk

Cosy get-togethers:

There are plenty of warm and welcoming restaurants and pubs to explore right on your doorstep. Discover local gems that offer cosy atmospheres and tasty menus, perfect for warming up during the colder months!



Lit Lounge

136 New Cross Road, SE14 5BA
litlounge.co.uk

Buster Mantis

3–4 Resolution Way, Deptford, SE8 4NT
bustermantis.com

The Real Turkish

195 Rushey Grn, SE6 4BD
therealturkish.co.uk

Badger Badger

139–145 Deptford High Street, SE8 3NU
badgerbadger.org

Perry Hill Pub

78–80 Perry Hill, SE6 4EY
perryhillpub.co.uk

Babur

119 Brockley Rise, Forest Hill, SE23 1JP
babur.info

Joyce Brockley

294 Brockley Rd, SE4 2RA
Joycebrockley.com

The Sylvan Post

24–28 Dartmouth Road, Forest Hill, SE23 3XZ
sylvanpost.co.uk



Home improvements

An update from our Housing Service

In October last year, we took over the management of 13,500 social rent homes which had previously been looked after by Lewisham Homes. The aim was to provide a more joined-up service for residents.

We knew we had a lot of work to do in bringing the service up to standard on providing decent homes, efficient repairs and timely fire safety actions so we referred ourselves to the government's Regulator of Social Housing and asked them to investigate.

In March this year, the Regulator came back with a list of recommendations for the areas we most urgently needed to improve.

We have been working hard since then to rectify the failures and are glad to say progress has been made.

We have:

- reduced overdue fire safety actions by half
- reduced our 'in progress' repairs jobs by two thirds
- increased the percentage of repairs completed on time
- reduced the average waiting time for our repairs call centre from 70 minutes to 14 minutes

There is still a way to go and we know our residents deserve better. We will continue working with the Regulator and keep reporting back until we have achieved full compliance for our residents.



Scan the QR code or visit lewisham.gov.uk/rsh to get the latest information on our progress.



Are you eligible for social housing?

Lewisham, like many other London boroughs, is experiencing a housing crisis. While we are doing all we can to deliver more social housing, there is still a severe shortage and we currently have over **11,000** households on our waiting list.

We use a banding system to understand who most urgently needs to be housed. It prioritises people who are homeless, live in unhygienic or overcrowded accommodation, are vulnerable, have medical needs or disabilities, or are in serious danger. By our calculations, a family on the lowest priority band would wait 23 years for a three-bedroom home and even longer for a larger home.

You can still apply for our waiting list. However, unless you or someone in your household fits at least one of the categories mentioned above, you could be in for a lengthy wait. We strongly recommend you explore all your other options first.

To get advice on housing in Lewisham, visit lewishamfindyourhome.org.uk



Are things getting out of hand?

We provide a confidential recovery-orientated model for substance misuse for over 18s. We offer support, advice and treatment options for yourself, family members, friends and/or carers who live in Lewisham.

Speak to us today:

☎ 020 8699 5263

✉ pcrs@waythrough.org.uk

🌐 www.waythrough.org.uk



Are you looking to sell your property

Lewisham Council is purchasing former Council properties sold off under Right to Buy to house families on our housing waiting list.

With around 10,000 families on our housing waiting list, we are always looking for new ways to increase the supply of social housing in Lewisham.

Our Right to Buyback programme aims to help tackle the housing crisis by purchasing former Council properties, using funding from the Mayor of London.

Selling your property to the Council can offer greater security and certainty than selling on the private market and will help provide new homes for those families most in need.

If you are interested in selling your property, you can get in touch with our Buybacks team via buybacks@lewisham.gov.uk

Or visit lewisham.gov.uk/SellYourHome and fill out our online form.



It only takes a **moment**

Find out how to supercharge your child's development with these fun, everyday things to do with your little one.

Are you making the most of everyday moments to nurture your child's developing brain? In those precious early years, from birth to age five, your child's brain grows at an incredible rate. Every small interaction helps shape their development, especially in terms of speech and language.

"The early years are really critical for speech and language development," explains Heeral Davda, Senior Speech and Language Therapist at Lewisham and Greenwich NHS Trust. "When children hear lots of language and communication, it helps their speaking and listening skills. This provides the foundation for lifelong learning."

However, many children in Lewisham are starting school with delayed language and communication skills. This can make it harder for them to learn in school and affect other areas of their lives. Heeral emphasises: "Communication skills are linked to more than just doing well at school. They also



Heeral Davda, Senior Speech and Language Therapist at Lewisham and Greenwich NHS Trust

affect children's emotional wellbeing, ability to make friends, and more."

As parents and carers, you are your child's most important teacher. The great news is that you can use everyday moments to make a big difference in your child's communication and language development. Whether they are listening to you talk, playing games, or singing songs, all of these interactions help – even if your child is too young to say much back!

'Moments that Matter' campaign

Lewisham Council's Angela Russell worked closely with local families and the Lewisham and Greenwich NHS Speech & Language Therapy team to create the 'Moments that Matter' campaign. The campaign emphasises how small, everyday moments can significantly impact your child's communication development. "Whether you're singing, playing, or telling a story, it's about finding moments in the day when you can use some of these ideas to help," says Angela. "These Moments that Matter can happen anytime, anywhere. Why not try some of these suggestions to help little minds grow?"



1. Take a moment to talk to your bump

Talking and singing to your baby bump during pregnancy can help your baby's brain develop before birth. The other parent can get involved too. Babies respond to different voices so talking to the bump helps your baby recognise both parent's voices when they are born.

2. Take a moment to copy your little one's sounds and words

Copying your baby and child's sounds and words can help you bond with them and support their language development along the way.

When you mirror your baby's babbles, you encourage them to keep "talking" to you in their own way. Next time your baby babbles, try asking a question and waiting for a response. Before long, they'll be chatting back!

3. Take a moment to share your home language

Did you know that children can understand and learn multiple languages from an early age?

By speaking to your child in your home language, you're giving their learning a boost. You're also helping them develop a strong connection to their family culture and community. Language is about more than just communication — it's about identity too.

4. Take a moment to sing and play

Singing songs and rhymes is a fun way to help your child learn new words and sounds. It gets them active too!

You don't need to be a great singer; your baby will love it anyway. Try singing some songs or rhymes while waiting at the bus stop, in the supermarket, or even during bath time.



5. Take a moment for quiet and calm

With so much going on around us, it's important to find opportunities for quiet time. Peace and calm can help your baby or child focus on your words and pick up on sounds they might otherwise miss.

Moments that Matter can happen anytime, anywhere. You don't need special toys or complicated activities to support your child's speech and language development. Simple, everyday moments can have a lasting impact.

For more tips and advice to support your child's development, including more ideas for everyday activities, visit lewisham.gov.uk/moments



Fostering success

Meet the new ambassadors for our Fostering Service on a mission to recruit other foster carers

We are pleased to introduce four of our wonderful, approved foster carers - Yeliz, Chevone, Patrick and Tracy – in their new roles as ambassadors for our Fostering Service.

They have been brought on board to help us recruit other foster carers. As part of their role, they will be going out into the community, to chat to residents about the benefits of fostering for the Council and why it's better than going through an independent fostering agency.

All four live in the borough, are dedicated and passionate carers and know fostering inside out. Who better to fly the flag for this important and essential Council service?

The ambassadors are based at the Fostering Hub at 45 Bromley Road, SE6 2UA. If you or anyone you know is interested in fostering, please feel free to drop in for a coffee and a chat – we are looking for people from all walks of life. No need to book, just turn up.

Alternatively, you can find them at festivals and other events taking place across the borough. If you would like them to attend yours, please contact our Fostering Project Lead at Ikmat.savage@lewisham.gov.uk who will be happy to arrange this for you.

To find out more about fostering for us, or read about our amazing ambassadors visit lewisham.gov.uk/foster-with-lewisham
Freephone: 0800 015 0129
Email: fosteringrecruitment@lewisham.gov.uk



Left to right: Tracy, Chevone, Yeliz; Front: Patrick

Chevone Matabaro, one of our new foster carer recruiters

“I became a Lewisham Connected Carer when our daughter’s school friend was going into care. My husband, Arron, and I decided to step in, so she came to live with us, our three daughters and son, giving her stability and allowing her to remain close to home and her brother. Four years later, we are excited to be supporting her as she begins university in another city.

“I want to make positive changes for carers and increase the number of foster homes in Lewisham. I’m enjoying learning how the fostering ship is run behind the scenes. I hope my insight and experience as a Connected Carer will inspire others to do the same.”

THE BEST DEFENCE

Vaccines are the best way to protect yourself, your family and your community from disease.

Winter campaign

We’re offering **FREE** flu, Covid-19 and RSV vaccinations to the following groups until March 2025:

- People over the age of 65
- Those with certain health conditions
- Children from 2 to 16-years-old
- Pregnant women

The NHS offers immunisation against:

- Respiratory syncytial virus (RSV)
- Flu (influenza)
- Measles
- Rubella
- Diphtheria
- Meningitis
- Covid-19
- Mumps
- Polio
- Whooping Cough



Scan to book and find out more.
Or visit www.nhs.uk/vaccinations

NHS



Lots going on an update from our Young Mayor

As Young Mayor I want to speak to as many young people as possible during my year in office

“ Since being elected, I've had the privilege of visiting schools like John Ball Primary and Deptford Park Primary. They were a great opportunity to hear from students themselves about the issues that are important to them. I have also attended and spoken at community events such as the Phoenix Housing AGM and Goldsmiths University.

Me and the Young Advisors have been busy consulting young people on which projects my £25,000 budget should fund. Some of the ideas we're looking into at the moment include working with the charity Urban Synergy to help young people reach their full potential and give them insights into various careers. We are also considering hosting regular social events like football and basketball tournaments. Recently, we organised a skating event to give young people a chance to skate and improve their skills in a safe space.

As we are nearing the next Young Mayor Election I want as many young people as possible to put themselves forward and become candidates. This is your chance to give back to our community and learn new skills. There's so much more I would like to contribute to my borough. I am going to make the most of the time I still have left!

You don't have to wait until the election to have your voice heard though. You are very welcome to join us for one of our weekly Young Advisors meetings. They are held at



Bilvilyn Asamoah,
 Young Mayor
 of Lewisham

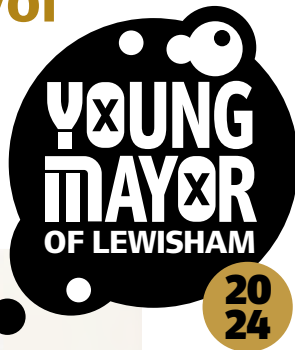
Follow the Young Mayor on

@lewisham_young_mayor

@lewishamyoungmayor1

the Civic Suite in Catford on Mondays from 5 to 7pm and is where all young people who have a connection to the borough can participate in weekly conversations around important changes in Lewisham.”

To find out more contact
katy.brown@lewisham.gov.uk



Lewisham's directly elected Mayor, Brenda Dacres, represents the whole borough. Contact her at brenda.dacres@lewisham.gov.uk

Please check beforehand whether your Councillor is holding in person surgeries. Visit lewisham.gov.uk/mayorandcouncil or call 020 8314 6000 and ask for 'operator'.

Bellingham

- Clr Rachel Onikosi**
rachel.onikosi@lewisham.gov.uk
 ☎ 020 8314 9021
- Clr Jacq Paschoud**
jacq.paschoud@lewisham.gov.uk
 ☎ 020 8291 5729

Blackheath

- Clr Pauline Dall**
pauline.dall@lewisham.gov.uk
 ☎ 020 8314 8619
- Clr Amanda de Ryk**
amanda.deryk@lewisham.gov.uk
 ☎ 020 8314 3789
- Clr Luke Warner**
luke.warner@lewisham.gov.uk
 ☎ 020 8314 8300

Brooklyn

- Clr Sian Eiles**
sian.eiles@lewisham.gov.uk
 ☎ 020 8314 3415
- Clr Ayesha Lahai-Taylor**
ayesha.lahai-taylor@lewisham.gov.uk
 ☎ 020 8314 6022
- Clr Stephen Penfold**
stephen.penfold@lewisham.gov.uk
 ☎ 020 8314 8817

Catford South

- Clr Natasha Burgess**
natasha.burgess@lewisham.gov.uk
 ☎ 020 8314 3671
- Clr James Royston**
james.royston@lewisham.gov.uk
 ☎ 020 8314 6696
- Clr Eva Stamirowski**
eva.stamirowski@lewisham.gov.uk
 ☎ 07392 860305

Crofton Park

- Clr Tauseef Anwar**
tauseef.anwar@lewisham.gov.uk
 ☎ 020 8314 9930
- Clr Chris Barnham**
chris.barnham@lewisham.gov.uk
 ☎ 020 8314 9896
- Clr Carol Webley-Brown**
carol.webley-brown@lewisham.gov.uk
 ☎ 020 8314 6713

Deptford

- Clr Dawn Atkinson**
dawn.atkinson@lewisham.gov.uk

☎ 020 8314 6538

- Clr Rosie Parry**
rosie.parry@lewisham.gov.uk
 ☎ 020 8314 6179
- Clr David Walker**
david.walker@lewisham.gov.uk
 ☎ 020 8314 7443

Downham

- Clr Andre Bourne**
andre.bourne@lewisham.gov.uk
 ☎ 07875 082340
- Clr Coral Howard**
coral.howard@lewisham.gov.uk
 ☎ 020 8314 6310
- Clr Oana Olaru-Holmes**
oana.olaru@lewisham.gov.uk
 ☎ 020 8314 7783

Evelyn

- Clr Will Cooper**
will.cooper@lewisham.gov.uk
 ☎ 020 8314 3072
- Clr Rudi Schmidt**
rudi.schmidt@lewisham.gov.uk
 ☎ 020 8314 8848
- Clr Hau-Yu Tam**
hau-yu.tam@lewisham.gov.uk
 ☎ 020 8314 6001

Forest Hill

- Clr Peter Bernards**
peter.bernards@lewisham.gov.uk
 ☎ 020 8314 9927
- Clr Sophie Davis**
sophie.davis@lewisham.gov.uk
 ☎ 020 8314 3493
- Clr Billy Harding**
billy.harding@lewisham.gov.uk
 ☎ 020 8314 7966

Grove Park

- Clr Suzannah Clarke**
suzannah.clarke@lewisham.gov.uk
 ☎ 020 8314 6944
- Clr Mark Jackson**
mark.jackson@lewisham.gov.uk
 ☎ 020 8314 8390
- Clr Hilary Moore**
hilary.moore@lewisham.gov.uk
 ☎ 020 8314 7886

Hither Green

- Clr Yemisi Anifowose**
yemisi.anifowose@lewisham.gov.uk
 ☎ 020 8314 8004

Clr Mark Ingleby

- mark.ingleby@lewisham.gov.uk
 ☎ 020 8698 8562
- Clr Kim Powell**
kim.powell@lewisham.gov.uk
 ☎ 020 8314 2051

Ladywell

- Clr Bill Brown**
bill.brown@lewisham.gov.uk
 ☎ 020 8314 9821
- Clr Laura Cunningham**
laura.cunningham@lewisham.gov.uk
 ☎ 020 8314 8011
- Clr Liz Johnston-Franklin**
liz.johnston-franklin@lewisham.gov.uk
 ☎ 020 8314 7985

Lee Green

- Clr Ese Erheriene**
ese.erheriene@lewisham.gov.uk
 ☎ 020 8314 8022
- Clr Eva Kestner**
eva.kestner@lewisham.gov.uk
 ☎ 020 8314 8031
- Clr James Rathbone**
james.rathbone@lewisham.gov.uk
 ☎ 020 8314 7524

Lewisham Central

- Clr Edison Huynh**
edison.huynh@lewisham.gov.uk
 ☎ 020 8314 8224
- Clr Aliya Sheikh**
aliya.sheikh@lewisham.gov.uk
 ☎ 020 8314 8245

New Cross Gate

- Clr Aisha Malik-Smith**
aisha.malik-smith@lewisham.gov.uk
 ☎ 020 8314 3496
- Clr Liam Shrivastava**
liam.shrivastava@lewisham.gov.uk
 ☎ 020 8314 8298

Perry Vale

- Clr John Paschoud**
john.paschoud@lewisham.gov.uk
 ☎ 020 8314 3437
- Clr Sakina Sheikh**
sakina.sheikh@lewisham.gov.uk
 ☎ 020 8314 7963
- Clr Susan Wise**
susan.wise@lewisham.gov.uk
 ☎ 020 8314 2214

Rushey Green

- Clr Louise Krupski**
louise.krupski@lewisham.gov.uk
 ☎ 020 8314 8983
- Clr John Muldoon**
john.muldoon@lewisham.gov.uk
 ☎ 020 8314 9058
- Clr James-J Walsh**
james-j.walsh@lewisham.gov.uk
 ☎ 020 8314 9948

Sydenham

- Clr Chris Best**
chris.best@lewisham.gov.uk
 ☎ 020 8314 8907
- Clr Liam Curran**
liam.curran@lewisham.gov.uk
 ☎ 020 8314 6937
- Clr Jack Lavery**
jack.lavery@lewisham.gov.uk
 ☎ 020 8314 6692

Telegraph Hill

- Clr Paul Bell**
paul.bell@lewisham.gov.uk
 ☎ 020 8314 7047
- Clr Joan Millbank**
joan.millbank@lewisham.gov.uk
 ☎ 020 8314 6929
- Clr Luke Sorba**
luke.sorba@lewisham.gov.uk
 ☎ 020 8314 9984

Members of parliament

- Vicky Foxcroft MP**
 Lewisham Deptford
 ☎ 020 8469 4638
 @ vicky.foxcroft.mp@parliament.uk
www.vickyfoxcroft.org.uk
- Janet Daby MP**
 Lewisham East
 ☎ 020 8461 4733
 @ janet.daby.mp@parliament.uk
www.janetdaby.org
- Ellie Reeves MP**
 Lewisham West and Penge
 ☎ 020 7219 2668
 @ ellie.reeves.mp@parliament.uk
www.elliereeves.com
- Len Duvall AM**
 London Assembly Member for
 Greenwich and Lewisham
 ☎ 020 7983 4350
 @ len.duvall@london.gov.uk

Want guaranteed rent 52 weeks a year, and no fees?



Let's talk.

Lease your residential property to us for a flexible term, and we'll give you guaranteed rent 52 weeks a year through our Private Sector Leasing Scheme.

Properties are then let by us to approved and vetted families in need of accommodation.

- Guaranteed rental income for the lease period – even if the property is empty
- No admin or management fees – saving time, money and stress
- Rent paid a month in advance
- Professional property management services
- A one-off monetary incentive at the start of the tenancy
- Guaranteed vacant possession at lease end

We're looking for properties right now:

- in good, habitable condition
- with approved safety documents (EPC, gas, electrical etc)
- in London and surrounding areas

Find out more today

Phone 020 8314 6733 or
email psl@lewisham.gov.uk
for a free information pack
lewisham.gov.uk/psl

