

20 November 2024

Access for All Enabling Works – Hither Green Station

Dear Neighbour,

Following on from our letter on 06 November 2024, I am writing to let you know that the Department for Transport (DfT) has granted approval for the Access for All scheme at Hither Green station.

The Access for All scheme will involve installing lifts and a footbridge which will make the station easier to use for passengers with mobility issues, older people, and parents with young children.

We will be holding an information drop-in session in **January 2025** to tell you more about the project. The details for this session can be found in this letter.

Enabling works

In the meantime, we have started some enabling works, a summary of which can be found in the table below. Whilst most of our works will be completed Monday to Friday between 08.00 and 18.00, there are some works which will be completed in weekend line closures, when trains are not running.

Start	Finish	Work to be carried out
Monday 18 November 2024	Friday 20 December 2024	<p>Some vegetation works, such as tree removal and vegetation clearance, have already commenced this week.</p> <p>The work will continue along parts of the embankment on Springbank Road and Fernbrook Road, where the entrances to the two new stations would be located, as well as in the area between platforms 4 and 5 for the lift structure serving this platform will be built.</p> <p>These works will take place Monday to Friday between 08:00 and 18:00.</p> <p>There are no planned activities over the Christmas period.</p>
Sunday 08:00 8 December 2024	Sunday 18:00 8 December 2024	<p>Relocation and removal of railway assets and survey works to make room for new infrastructure.</p> <p>These works will be carried out during a weekend line closure.</p>
Sunday 08:00 16 March 2025	Sunday 18:00 16 March 2025	<p>Relocation and removal of railway assets and survey works to make room for new infrastructure.</p> <p>These works will be carried out during a weekend line closure.</p>

Due to the nature of the work and the tools we use, some disturbance will be unavoidable. During the planned weekend line closures, you may also hear train horns being sounded; this is because we need to alert staff on track of all train movements in the area for their safety.

We are sorry for any disturbance and inconvenience this causes you. All staff working on site are fully briefed on working responsibly in the local community and keeping noise levels to an absolute minimum level.

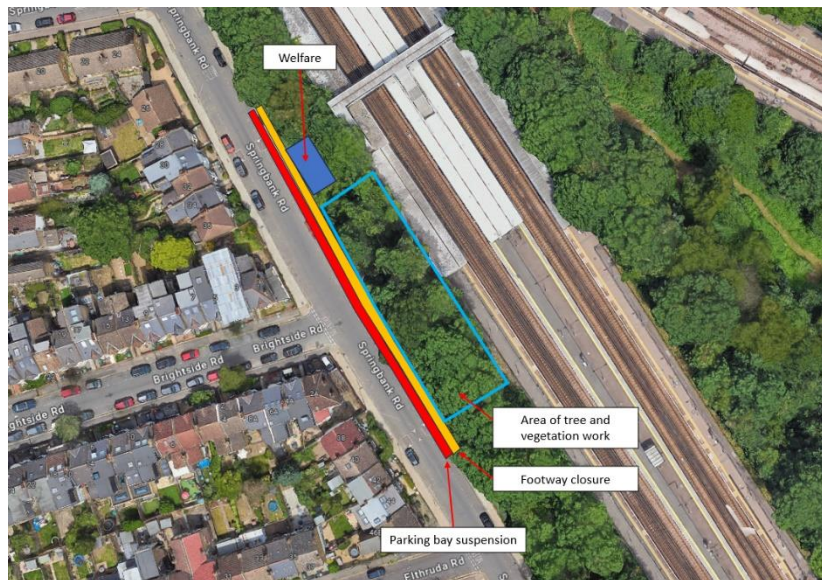
To support our planned enabling works, we will be setting up our site compound within the Network Rail Depot located on Fernbrook Road. We will also be making use of a welfare unit on Springbank Road.




To minimise the impact of the enabling works on our neighbours we are combining our vegetation works with those planned in November and December by our local maintenance team. Our vegetation works will focus on sections of the embankments on **Springbank Road** and **Fernbrook Road** embankments as shown in the photos below. We will also be undertaking these works at Hither Green station in the **area between platforms 4 and 5**.

Vegetation works on Springbank Road

The removal of vegetation and trees on the embankment at the new station entrance has commenced on **Monday 18 November 2024**. We expect this work to be completed by **Friday the 29 November 2024**. Our works will take place **Monday to Friday between 08:00 and 18:00**.

To carry out the work safely, the footway closest to the railway will be closed to pedestrians. In addition, 12 parking bays will be suspended opposite house numbers 28 to 42. **The closure and parking suspension will be in place for the full duration of our works**. We apologise for the inconvenience this may cause you and recommend that you allow additional time for your journey.



	Welfare facility
	Footpath Closure
	Parking Bay suspensions

Vegetation works on Fernbrook Road

To enable construction of the new entrance we need to remove vegetation and trees on a limited area of the embankment. This work will commence on **Monday the 2 December 2024**. We expect this work to be completed by **Friday the 20 December 2024**. Our works will take place Monday to Friday between **08:00 and 18:00**.

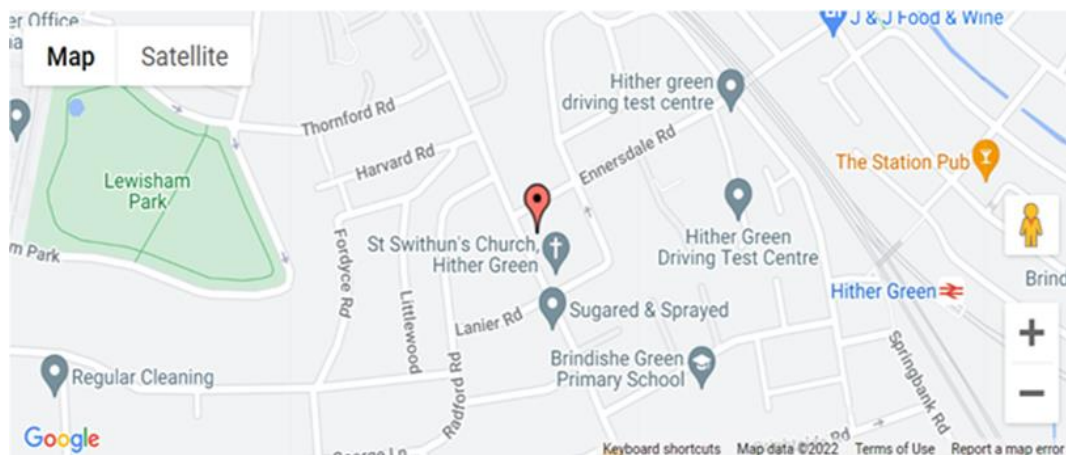
To carry out the work safely, 12 parking bays will be suspended opposite house numbers 24 to 46. **The parking suspension will be in place for the full duration of our works**. We apologise for the inconvenience this may cause you and recommend that you allow additional time for your journey.



Information drop-in session

We would like to invite you to an information drop-in session on **Wednesday 15 January 2025** from **16:00 to 19:00** which will be held at **St. Swithun's Church, 191 Hither Green Lane, London, SE13 6QE [Saint Swithun's : Church Hall \(saintswithuns.org.uk\)](http://saintswithuns.org.uk)** where you will be able to find out more information about this scheme, including the works planned beyond this initial enabling phase. A map showing the location of St Swithun's Church can be found below.

There will be representatives from the Network Rail project team and from BAM Nuttall who will be delivering the work on our behalf. We will be able to share with you the plans to improve accessibility at Hither Green station and answer any questions you have about how this important accessibility improvement to the station will be delivered. We hope you'll be able to join us and look forward to speaking to you soon.



Delivering the highest standards of safety is paramount to our work and keeping people safe on and around the railway is at the heart of everything we do. We are sorry for any disturbance and inconvenience that these works may cause you.

If you have any additional questions or concerns, please email us on communityrelations@networkrail.co.uk or telephone our **24-Hour National Helpline** on **03457 11 41 41** quoting **Hither Green Access for All**.

Yours faithfully,



John Moss-Coleman
Community Relations Manager